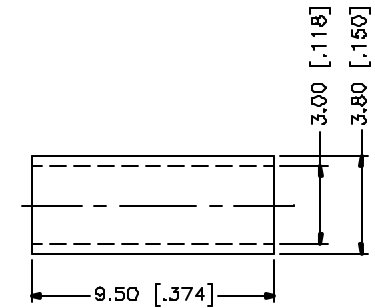
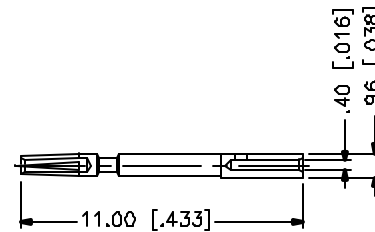
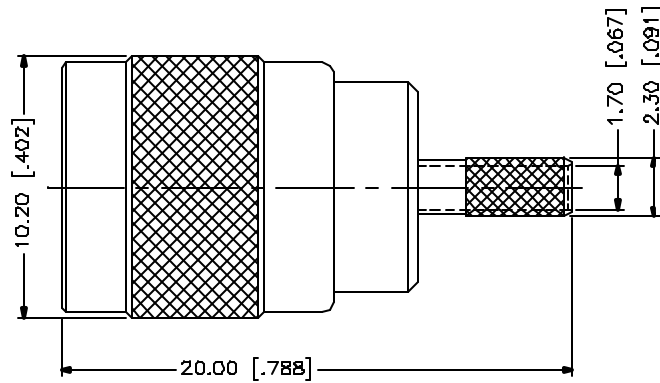
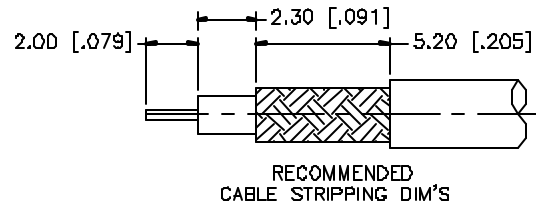


REV.	DATE	DESCRIPTION
A	05/01/04	UPDATE DRAWING FORMAT



NOTE:

1. CRIMPED FERRULE
HEX CRIMP SIZE .128"
2. CONTACT PIN TO SOLDER

				UNLESS OTHERWISE SPECIFIED DIMENSIONS ARE IN MILLIMETERS. DIMENSIONS IN [] ARE IN INCHES AND FOR CUSTOMER REFERENCE ONLY.	APPROVALS	DATE	Amphenol Connex								
8					DRAWN	G.R.S.					05/01/04	PART DESCRIPTION SMZ POSITION LOCK CRIMP PLUG (FOR RG-179/U, 187A/U)			
7					CHECKED			PART NO. 142284							
6					ISSUED							DWG. NO. 142284.DWG			
5					SHEET	1 OF 1		REV. A							
4	FERRULE	COPPER	NICKEL	1	CAD FILE							SCALE NA			
3	CONTACT PIN	BER. COPPER	GOLD	1	C:/142/142284.DWG										
2	INSULATOR	TEFLON	NATURAL	1	UNLESS OTHERWISE SPECIFIED TOLERANCES FOR MILLIMETERS ARE: 0.5 - 8mm ± 0.20mm 8 - 30mm ± 0.40mm 30 - 120mm ± 0.50mm UNLESS OTHERWISE SPECIFIED TOLERANCES FOR INCHES ARE: .020 - .315 = ± 0.007" .315 - 1.180 = ± 0.015" 1.180 - 4.724 = ± 0.020"										
1	BODY	BRASS	GOLD	1								DO NOT SCALE DRAWING			
DESCRIPTION				MATERIAL	FINISH	QTY									