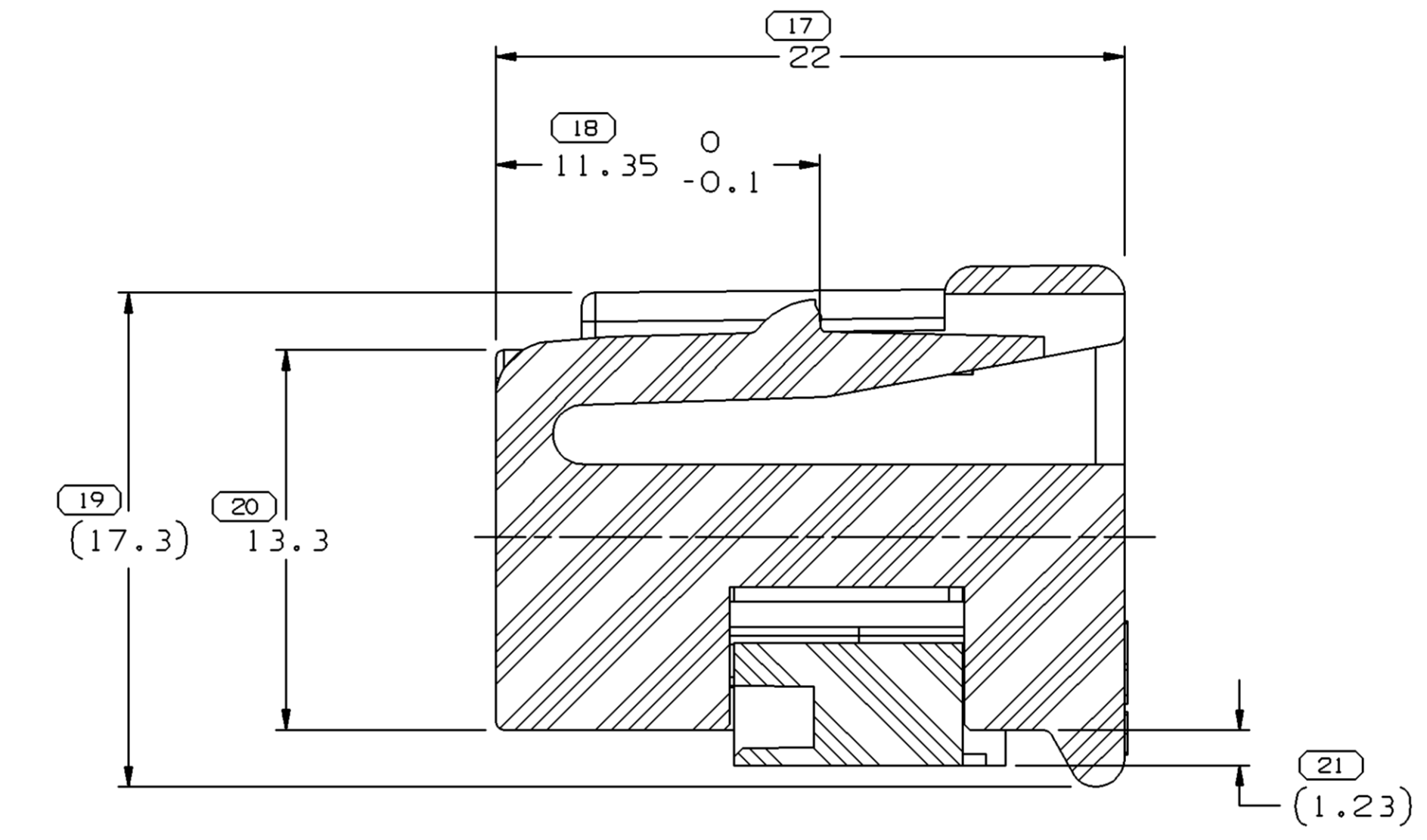
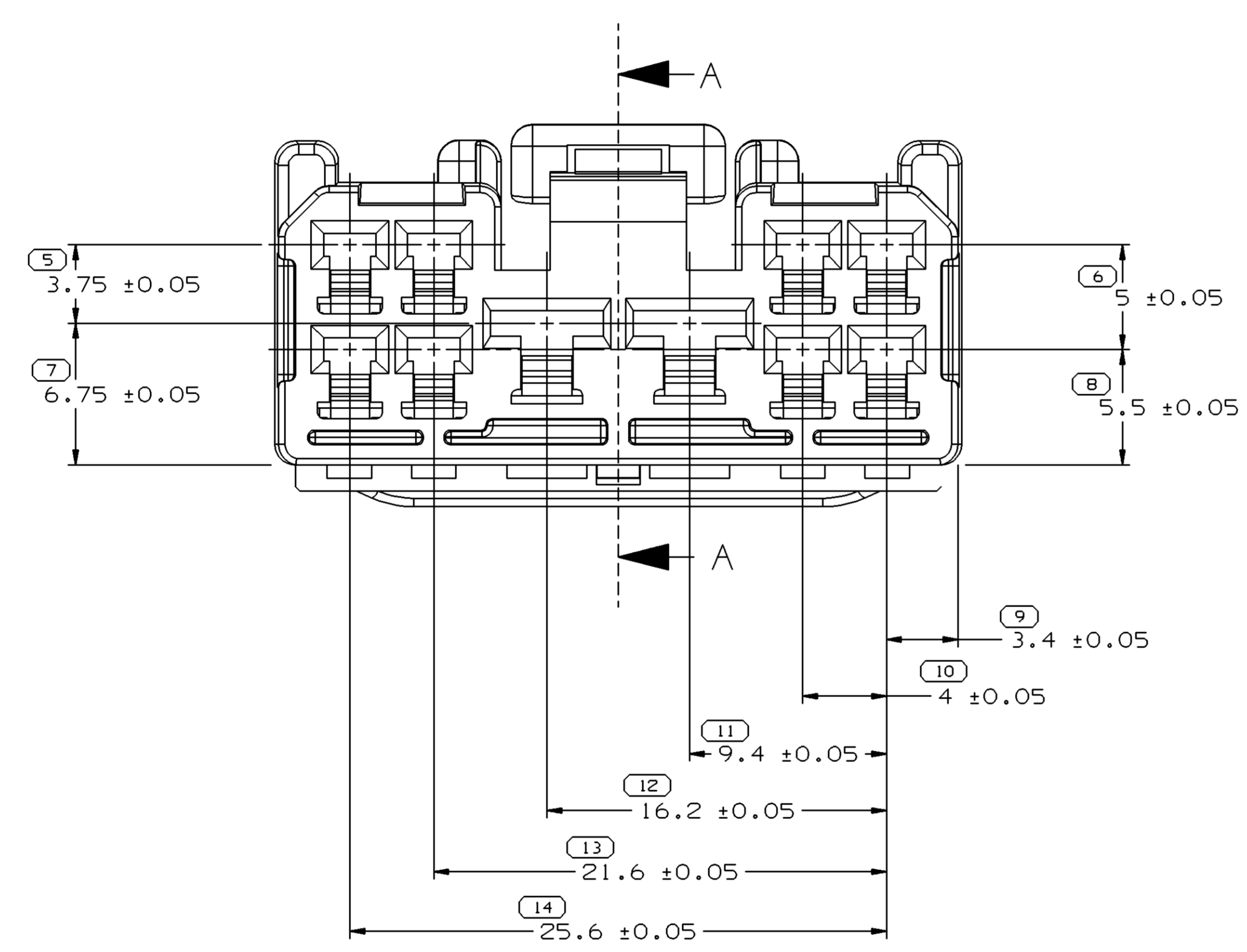
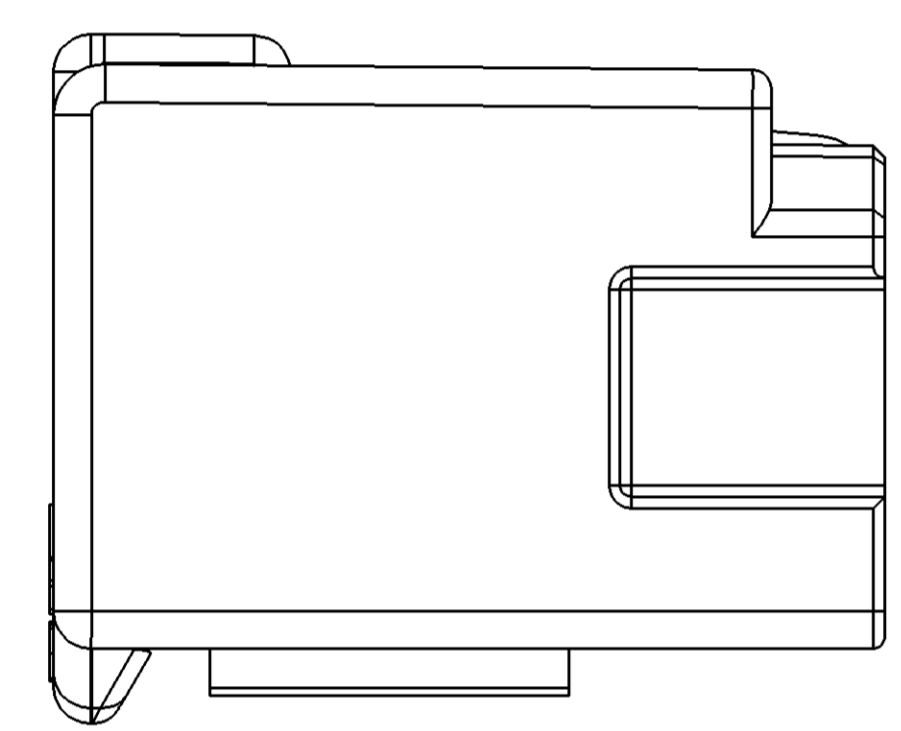
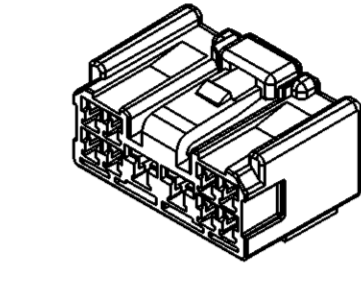
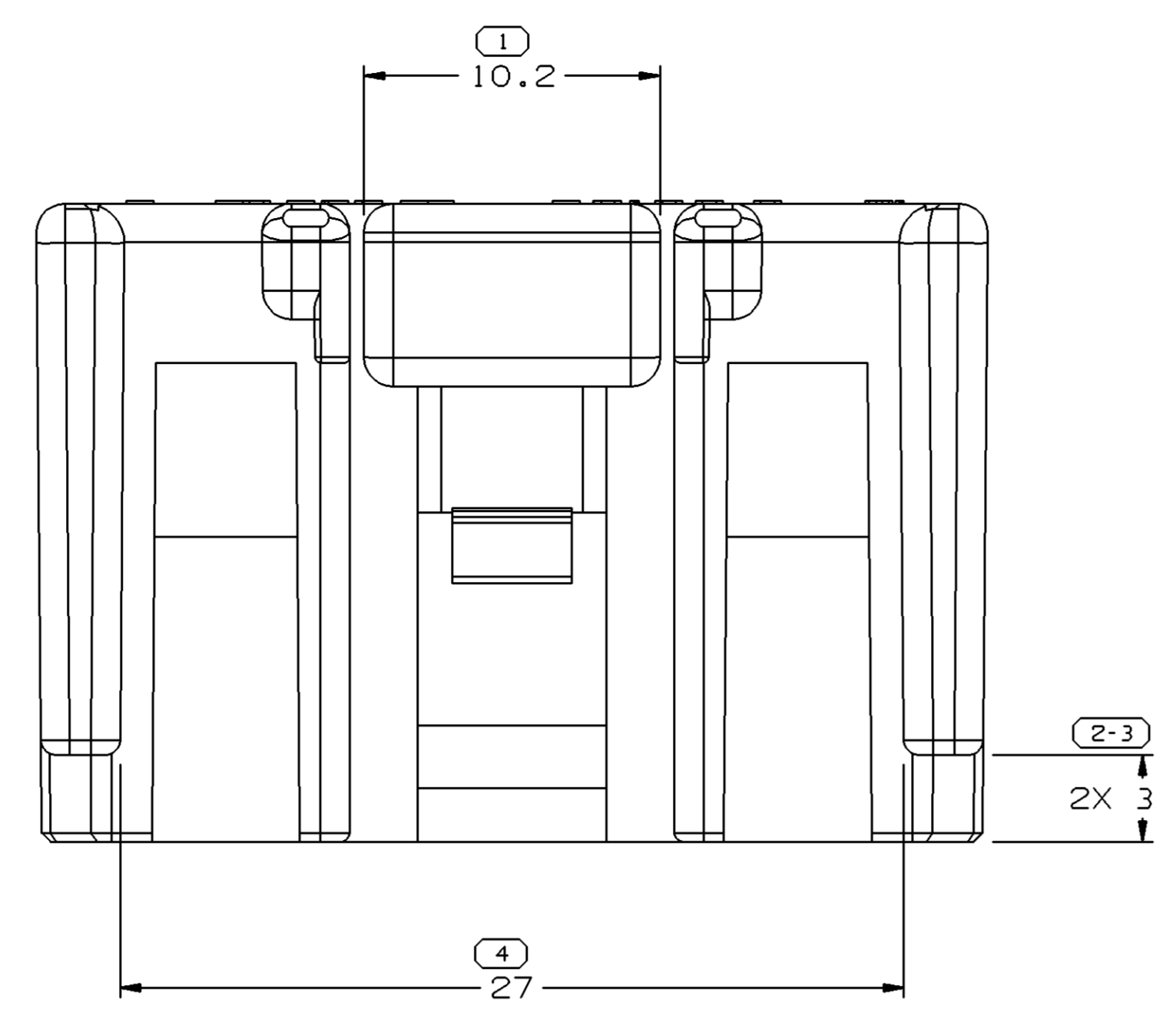
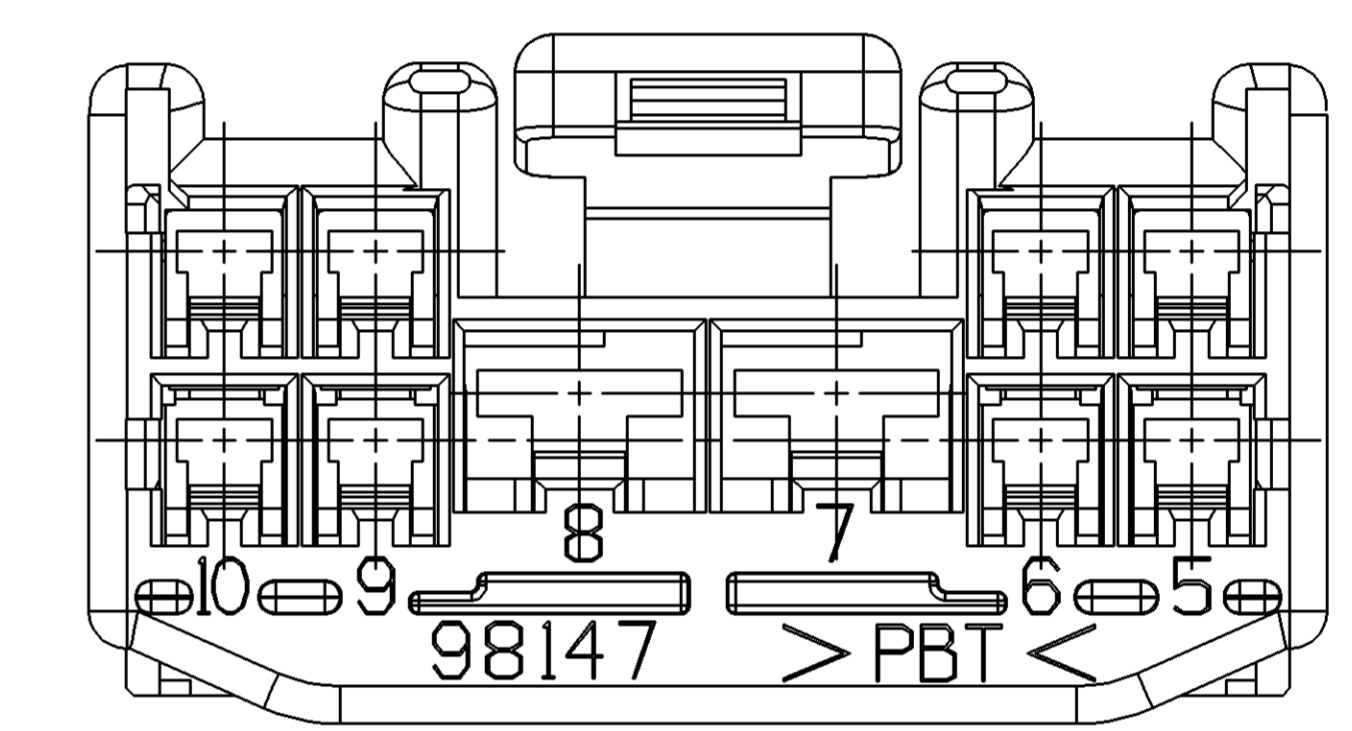


SYMBOL DEFINITION		MISSING NUMBERS	
A DIMENSION WITHOUT AN INSPECTION REPORT SYMBOL DOES NOT REQUIRE INSPECTION. IT MAY BE CONTROLLED ON AN INDIVIDUAL COMPONENT DRAWING.	TOTAL NO. OF SYMBOLS ON DRAWING	20	
	LAST NO. USED	21	

DWO STATUS					REVISION HISTORY					AUTH		DR		APVD	
DATE	STG	REV	N/P	CHK	ZONE										
16JUN02	-	01	-	-		CLEARED REVISION COLUMN, ADDED SECONDARY LOCK COLUMN.					231461	LMB	LMB	TV	
16JUN03	-	02	-	-		15468630 - ADDED TO TAX1; ALL PARTS - UPDATED MATERIAL SPEC					241667	AKJ	AKJ	TAV	

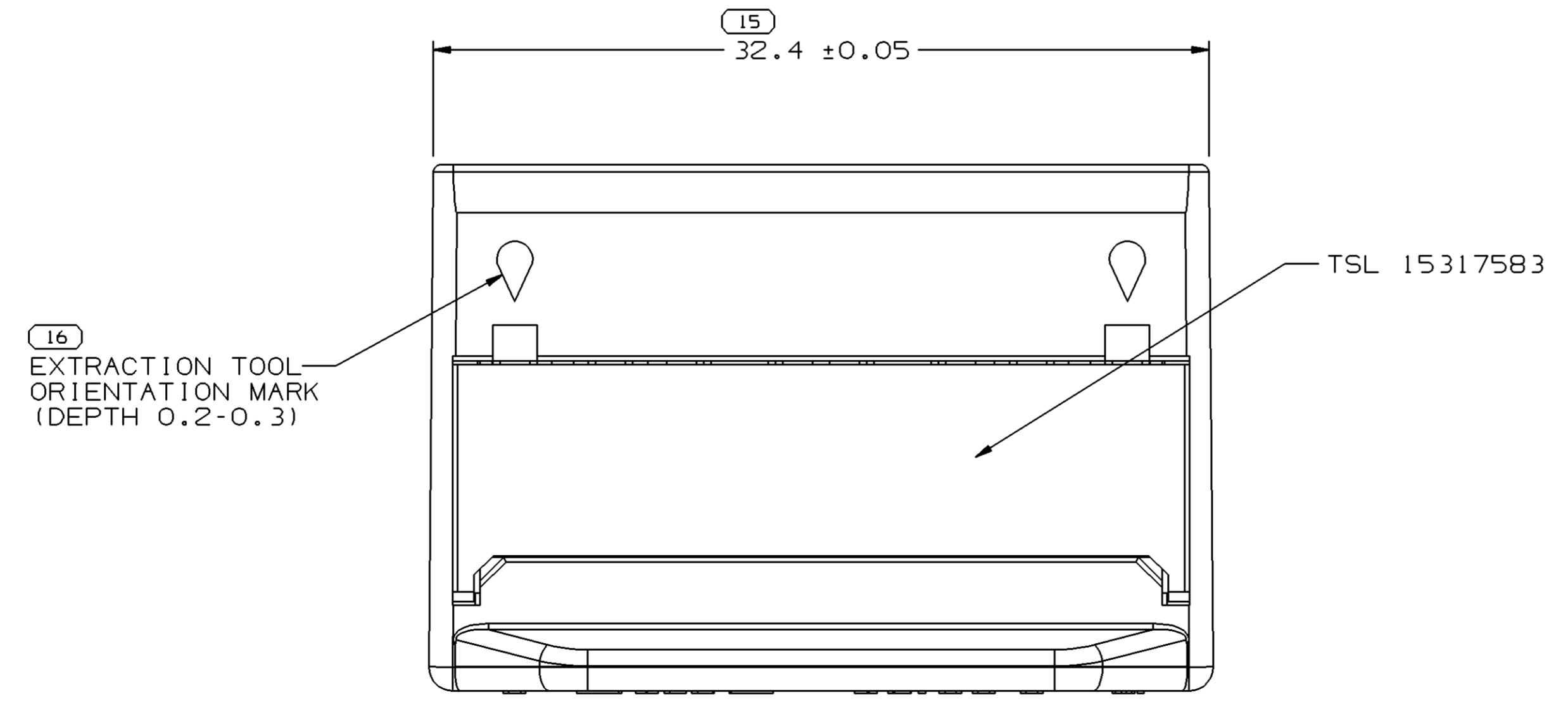


SECTION A - A

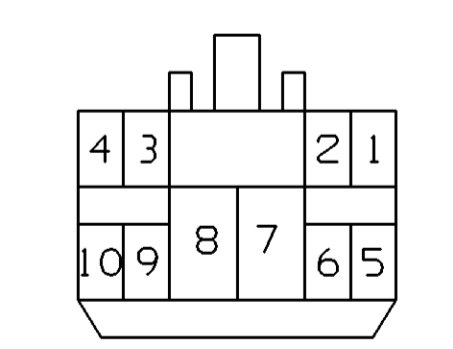


NOTES

- UNLESS OTHERWISE SPECIFIED AND/OR INDICATED: DIMENSIONS ARE TO FACE OF VIEW SHOWN AND AUTOMATICALLY ROUNDED BY COMPUTER FOR INSPECTION. (SEE MATH MODEL FOR PRECISE DIMENSIONS.) FOR ALL OTHER DIMENSIONS NOT SHOWN BUT REQUIRED FOR TOOL BUILD, SEE MATH MODEL FOR PRECISE TOOL PATH DATA. DRAFT IS 0.5° ON ALL OUTSIDE SURFACES LIKE CAVITIES ARE IDENTICAL.
- MATING COMPONENTS: CONNECTOR 90080-98146 (15369205 PED P/N) OR EQUIVALENT.
- CAVITIES TO ACCEPT 09011 TERMINAL OR EQUIVALENT.
- PART SHOULD CONFORM TO TSC 1000G/TSC 1225G
- PACKARD HANDLING MANUAL AVAILABLE
- PARTS ARE AVAILABLE AS LOOSE PIECES ONLY.



CONNECTOR SYMBOL



BASED ON TSZ 1305

ECT No.	REVISION RECORD	NEW ADOPTION	WEIGHT	WEIGHT TOL
097WFO246			11.11	XX

TOYOTA PART NAME		TOYOTA PART No.	
HOUSING CONNECTOR FEMALE		90080-98147	
APPROVED		CHECKED	

STAFF CODE	DM700	TOYOTA MOTOR CORPORATION	
		PART NO.	



DWO TYPE		PART DRAWING	
STYLE		DISTR CODE	D
VOLUME (CM³)			
ROUTING	6900		

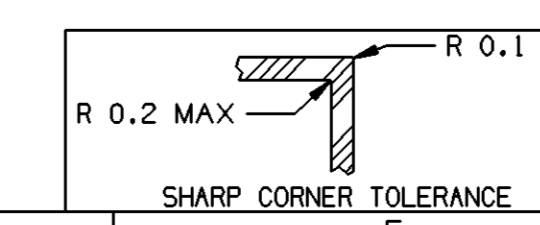
UNLESS OTHERWISE SPECIFIED THIS DOCUMENT IS IN ACCORDANCE WITH ASME Y14.5M-1994 AS AMENDED BY THE 2003 DIMENSIONING AND TOLERANCING ADDENDUM - 1997. ALL DIMENSIONS ARE IN MILLIMETERS UNLESS OTHERWISE SPECIFIED. DIMENSIONS ARE TO FACE UNLESS OTHERWISE SPECIFIED. DIMENSIONS ARE TO FACE UNLESS OTHERWISE SPECIFIED. DIMENSIONS ARE TO FACE UNLESS OTHERWISE SPECIFIED. DIMENSIONS ARE TO FACE UNLESS OTHERWISE SPECIFIED. DIMENSIONS ARE TO FACE UNLESS OTHERWISE SPECIFIED.

DR	DATE
APVD1 RUBEN ORTIZ	21SE98
APVD2 A. UGALDE G.	22SE98
APVD3 GUODONG CHEN	24SE98
APVD4	
APVD5	

SUBSTANCES OF CONCERN AND RECYCLED CONTENT PER DELPHI 10949001

DRAWING NAME		DRAWING NUMBER	
TAXI ASM CONN 10 F 090 11,187		15369210	
SIZE	SCALE	FRAME NO	SHEET NO
A0	5:1	1 OF 1	1 OF 1

TERM F 187	TERM F 09011	CONN 10F 09011,187	PART NAME	ASM PART NO	REV	PED PART NO	TERMINAL SECONDARY LOCK	MATERIAL SPECIFICATION AND COLOR	FINISH	JIS WIRE SIZE (MM²)	SAE WIRE SIZE NO.	TMC P/N	TMC PURCHASED P/N
-	-	-	-	-	-	-	-	T0.4 ASTM26000 CDA-260	PRE-TINNED	2.0-3.0	12,14	90080-98165	90980-09272
-	-	-	-	-	-	-	-	T0.4 ASTM26000 CDA-260	PRE-TINNED	0.5-1.25	16,18,20	90080-98168	90980-09271
-	-	-	-	-	-	-	-	T0.4 ASTM26000 CDA-260	PRE-TINNED	0.3-0.5	20,22	90080-98173	90980-09270
-	-	-	-	-	-	-	-	T0.25 TSG7100G-C2600R	GOLD PLATED	0.5-1.25	16,18,20	-	90980-09478
-	-	-	-	-	-	-	-	T0.25 TSG7100G-C2600R	GOLD PLATED	0.3-0.5	20,22	-	90980-09477
-	-	-	-	-	-	-	-	T0.25 KLF-5 EQUIV.	PRE-TINNED	2	14	90080-98166	90980-09266
-	-	-	-	-	-	-	-	T0.25 ASTM26000 CDA-260	PRE-TINNED	0.5-1.25	16,18,20	90080-98004	90980-09265
-	-	-	-	-	-	-	-	T0.25 ASTM26000 CDA-260	PRE-TINNED	0.3-0.5	20,22	90080-98043	90980-09264
-	-	-	-	-	-	-	-	M4695008 PBT BLU	-	-	-	90080-98147L	90980-11527L
-	-	-	-	-	-	-	-	M4695001 PBT NAT	-	-	-	90080-98147N	90980-11527N
-	-	-	-	-	-	-	-	M4695002 PBT BLK	-	-	-	90080-98147B	90980-11527B



(15) PROCESS SENSITIVE DIMENSION	
DIMENSIONAL RANGE (MM)	CHART #
FROM 0 TO 10	10
10 TO 25	20
25 TO 50	30
50 TO 100	40
100 TO 150	50
150 TO 200	60
200 TO 300	70
300 TO 400	80
400 TO 500	90
500 TO 600	100
600 TO 700	110
700 TO 800	120
800 TO 900	130
900 TO 1000	140
1000 TO 1500	150
1500 TO 2000	160
2000 TO 3000	170
3000 TO 4000	180
4000 TO 5000	190
5000 TO 6000	200
6000 TO 7000	210
7000 TO 8000	220
8000 TO 9000	230
9000 TO 10000	240

