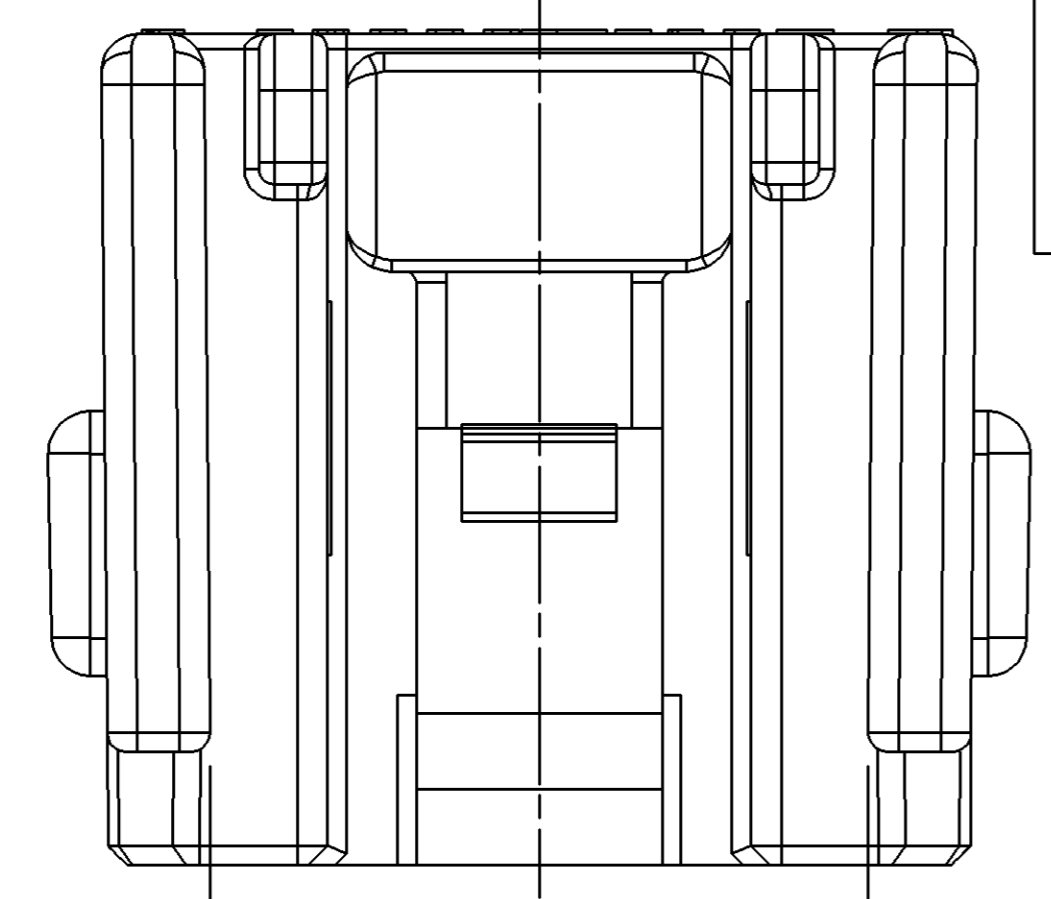
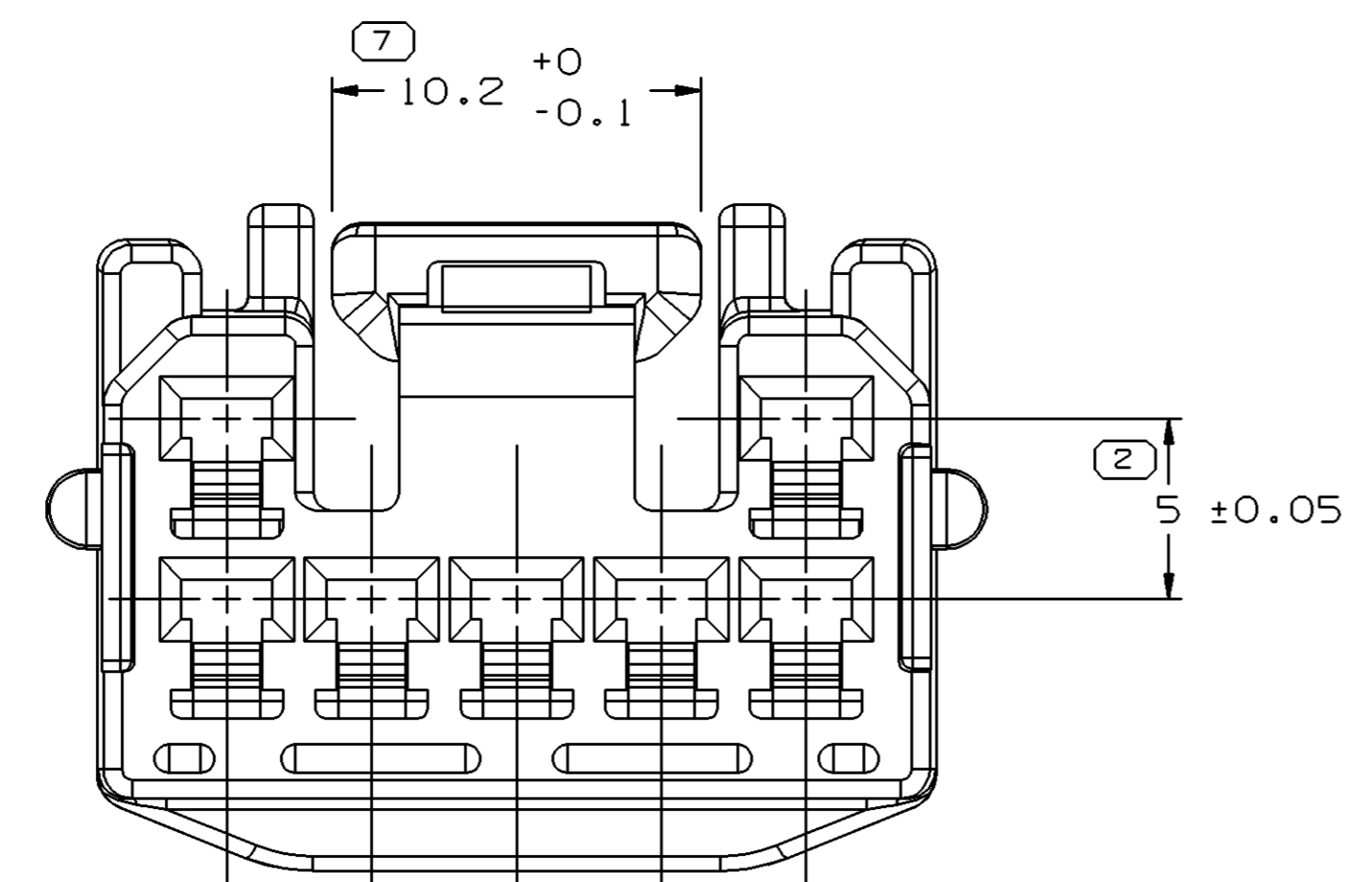


SYMBOL DEFINITION		MISSING SYMBOLS	
A DIMENSION WITHOUT AN INSPECTION REPORT SYMBOL DOES NOT REQUIRE INSPECTION. IT MAY BE CONTROLLED ON THE INDIVIDUAL COMPONENT DRAWING.	TOTAL NO OF INSPECTIONS REQUIRED	NO MISSING SYMBOL NUMBER	10
	LAST NO. USED		10

DWG STATUS					ZONE	REVISION HISTORY			AUTH	DR	APVD1	APVD2
DATE	STG	REV	N/P	CHG		Cleared Revision Column; Revised Note 2			231461	LMB	LMB	TV
160C02	R	B2	-	-								



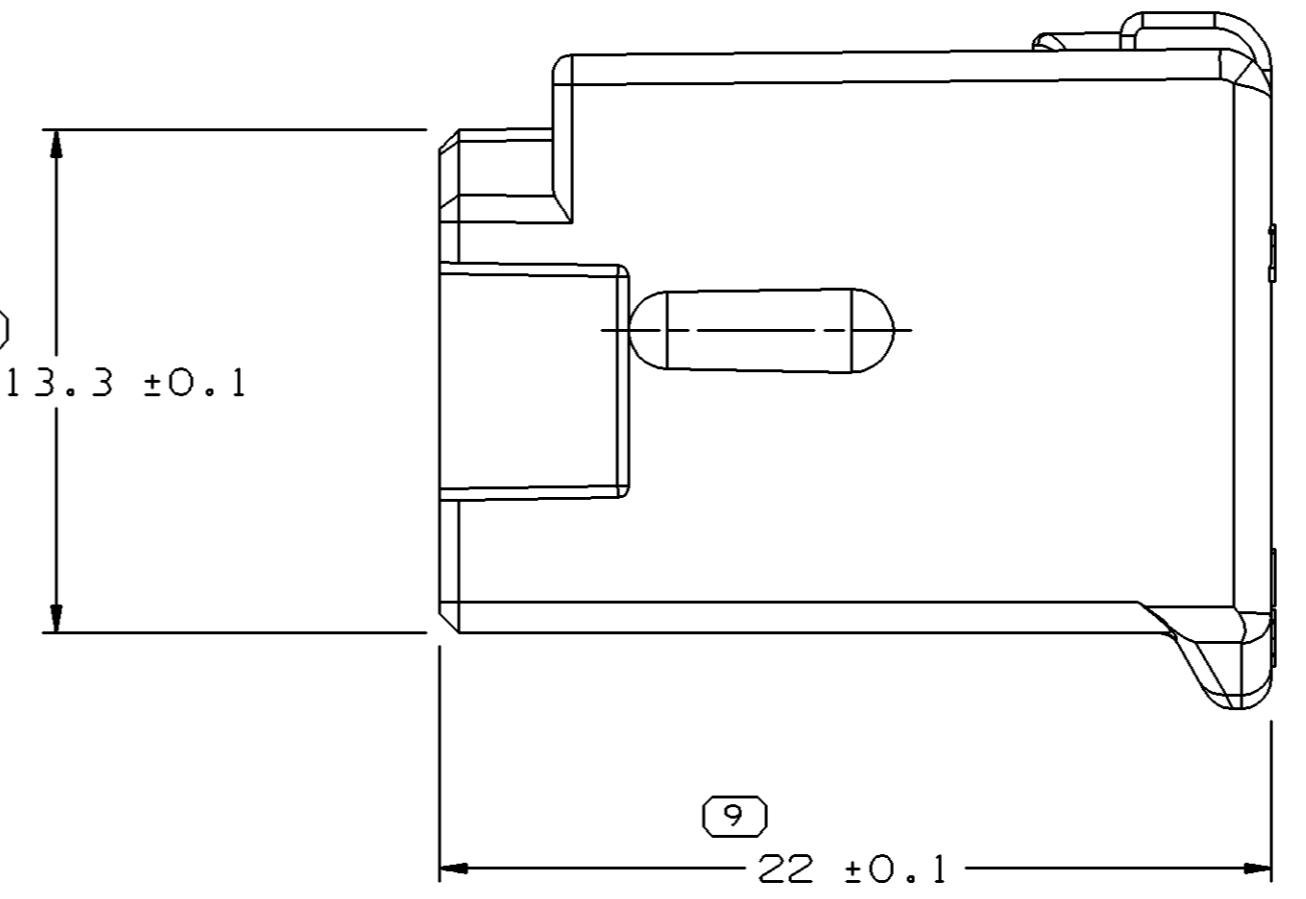
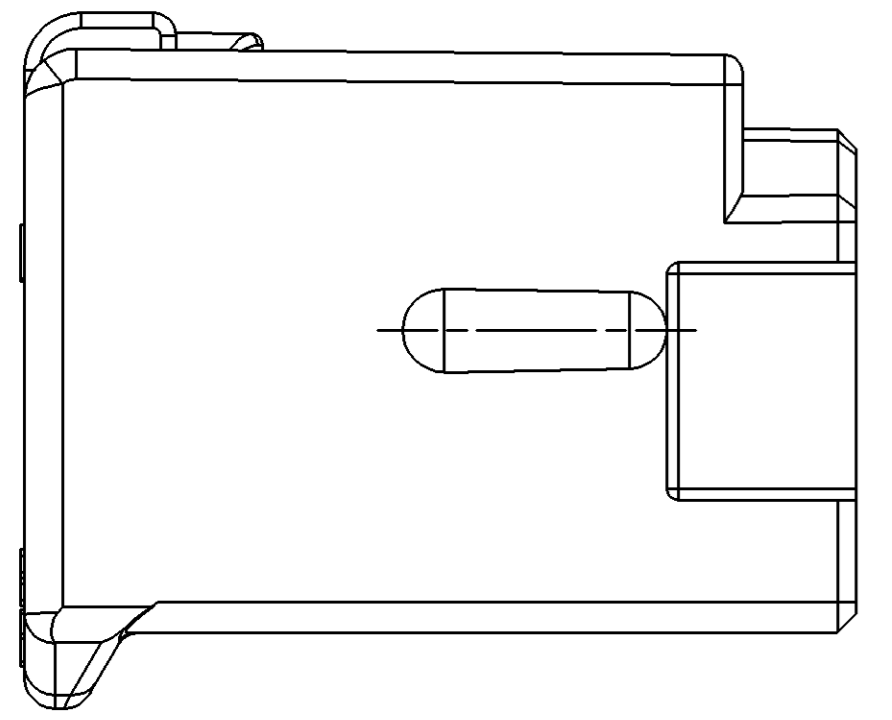
1 17.4 +0.2
-0



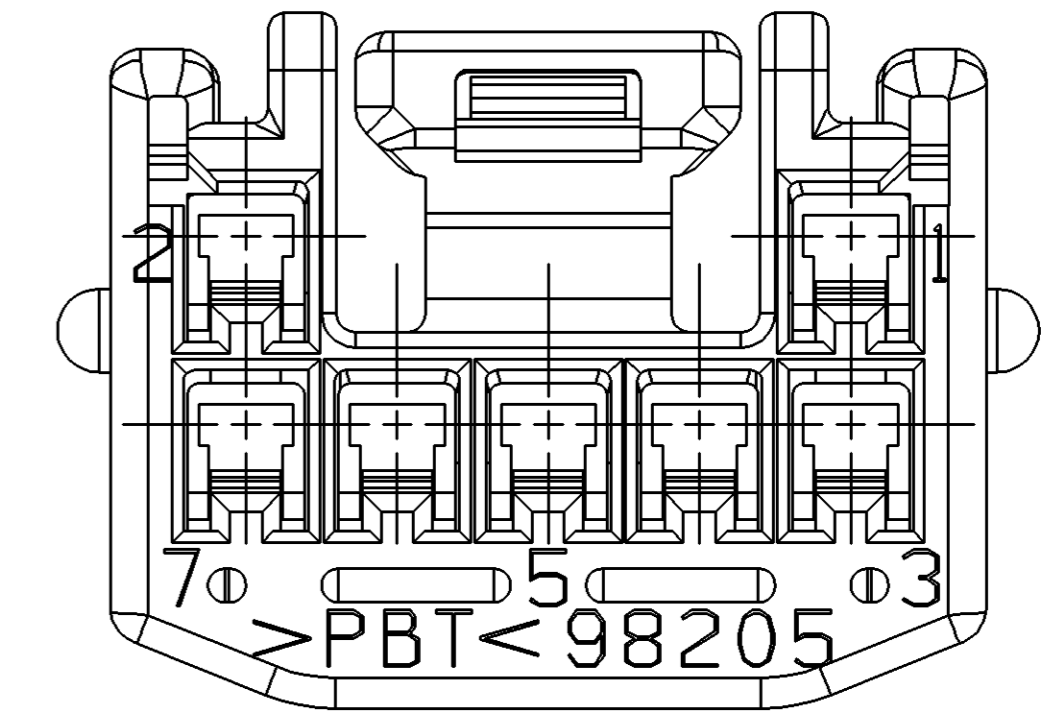
7 10.2 +0
-0.1

2 5 ±0.05

10 13.3 ±0.1



9 22 ±0.1



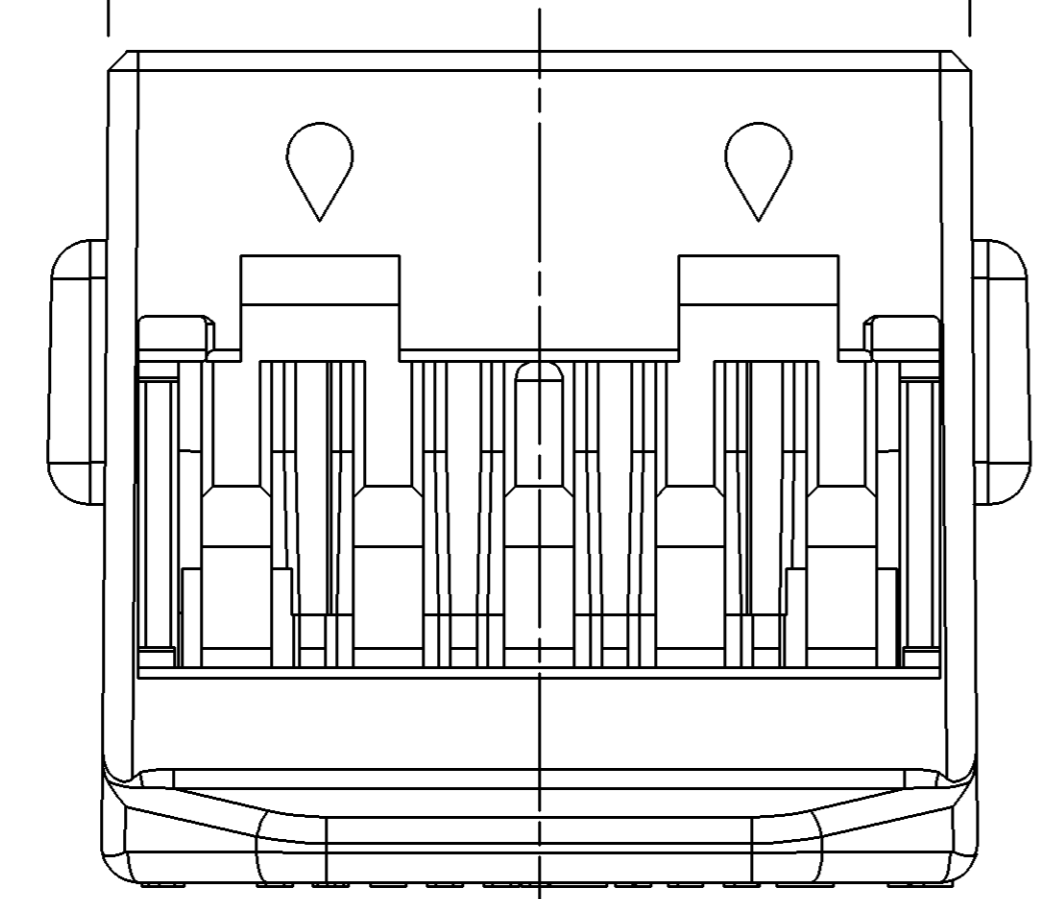
6 4 ±0.05

5 8 ±0.05

4 12 ±0.05

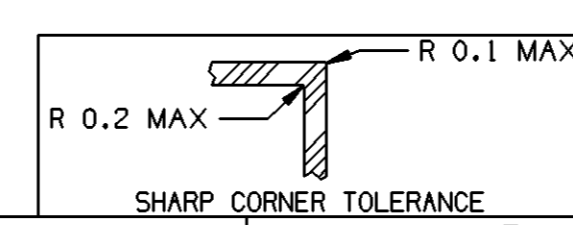
3 16 ±0.05

8 22.8 ±0.1



NOTES:

- UNLESS OTHERWISE SPECIFIED AND/OR INDICATED: DIMENSIONS ARE TO FACE OF VIEW SHOWN AND AUTOMATICALLY ROUNDED BY COMPUTER FOR INSPECTION. (SEE MATH MODEL FOR PRECISE DIMENSION) FOR ALL OTHER DIMENSIONS NOT SHOWN BUT REQUIRED FOR TOOL BUILD, SEE MATH MODEL FOR PRECISE TOOL PATH DATA.
- MATING COMPONENTS:
CONNECTOR 15318029 OR EQUIVALENT
TERMINAL SECONDARY LOCK - 15318032 OR EQUIVALENT
CAVITIES TO ACCEPT 09011 TERMINAL 12161199 OR EQUIVALENT
- CONNECTOR ENGAGE FORCE CODE
- THIS PART SHOULD CONFORM TO TSC 1000G/TSC 1225G.



DIMENSIONAL RANGE (MM)		CHART F
FROM	0	> 10
TO	10	50
TOLERANCE UNLESS OTHERWISE SPECIFIED		
±0.15		±0.2
ANGULAR TOLERANCE ±1°		

DWG TYPE		PART DRAWING	
STYLE			
VOLUME (CM³)	3.385	DISTR CODE	D
ROUTING	6900		
UNLESS OTHERWISE SPECIFIED			
THIS DOCUMENT IS IN ACCORDANCE WITH ASME Y14.5M-1994 AS AMENDED BY THE GM GLOBAL DIMENSIONING AND TOLERANCING ADDENDUM - 1997. ALL GEOMETRIC TOLERANCES AND RELATED DATUMS APPLY RFS. RULE #1 PERFECT FORM AT MMC1 DOES NOT APPLY WHEN RELATIONSHIP BETWEEN FEATURES IS ESTABLISHED BY ORIENTATION OR LOCATION TOLERANCES. SEPARATE POSITION CALLOUTS MAY BE GAGED SEPARATELY, REGARDLESS OF DATUM REFERENCE. ALL DIMENSIONS ARE IN MILLIMETERS			
THIRD ANGLE PROJECTION	DO NOT SCALE	UNIGRAPHICS	
USE MATH DATA			

DELPHI			
DELPHI PACKARD ELECTRIC SYSTEMS WARREN, OH			
DR			DATE
APVD1	G.G. IZOUERDO	20AU97	
APVD2	P. OSEGUERA	22AU97	
APVD3	GOUDONG CHEN	29AU97	
APVD4			
APVD5			
SUBSTANCES OF CONCERN AND RECYCLED CONTENT PER DELPHI 10949001			
MATERIAL M4695001			
DRAWING NAME			
CONN 7F 090 11			
DRAWING NUMBER			
15318030			
SIZE	SCALE	FRAME NO	SHEET NO
A1	5:1	1 OF 1	1 OF 1
STG	REV	N/P	
R	B2	-	