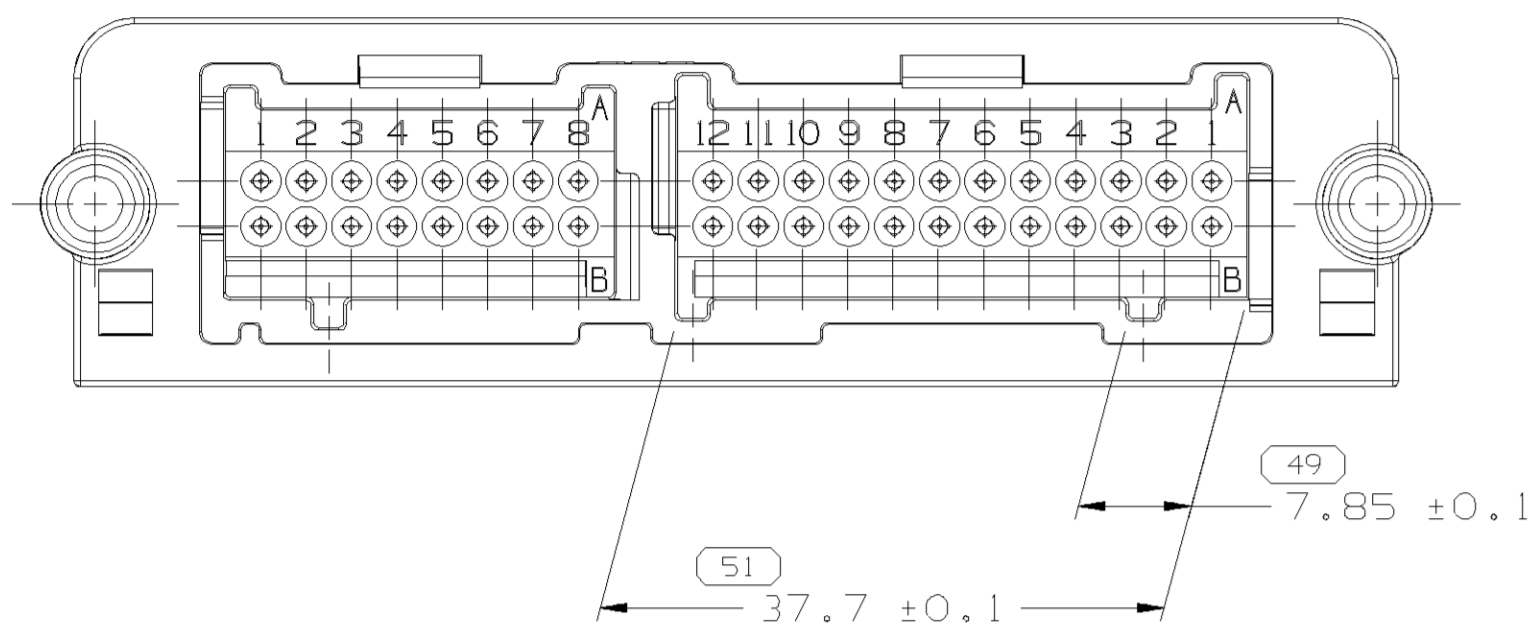
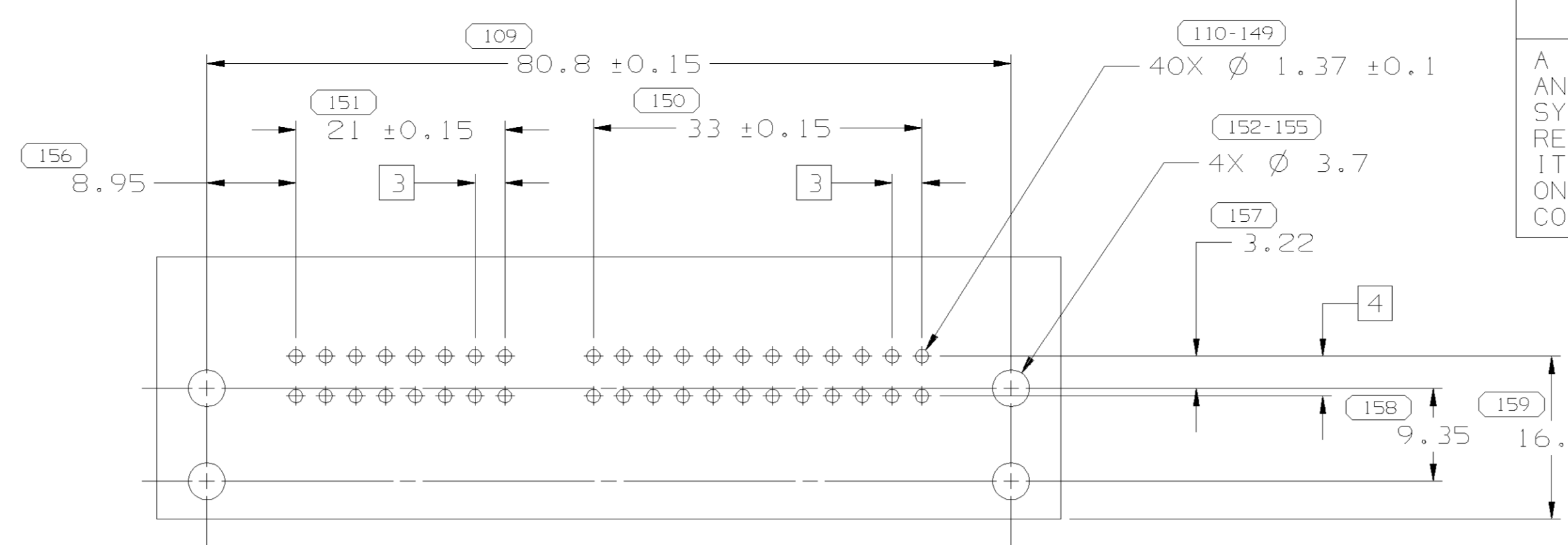
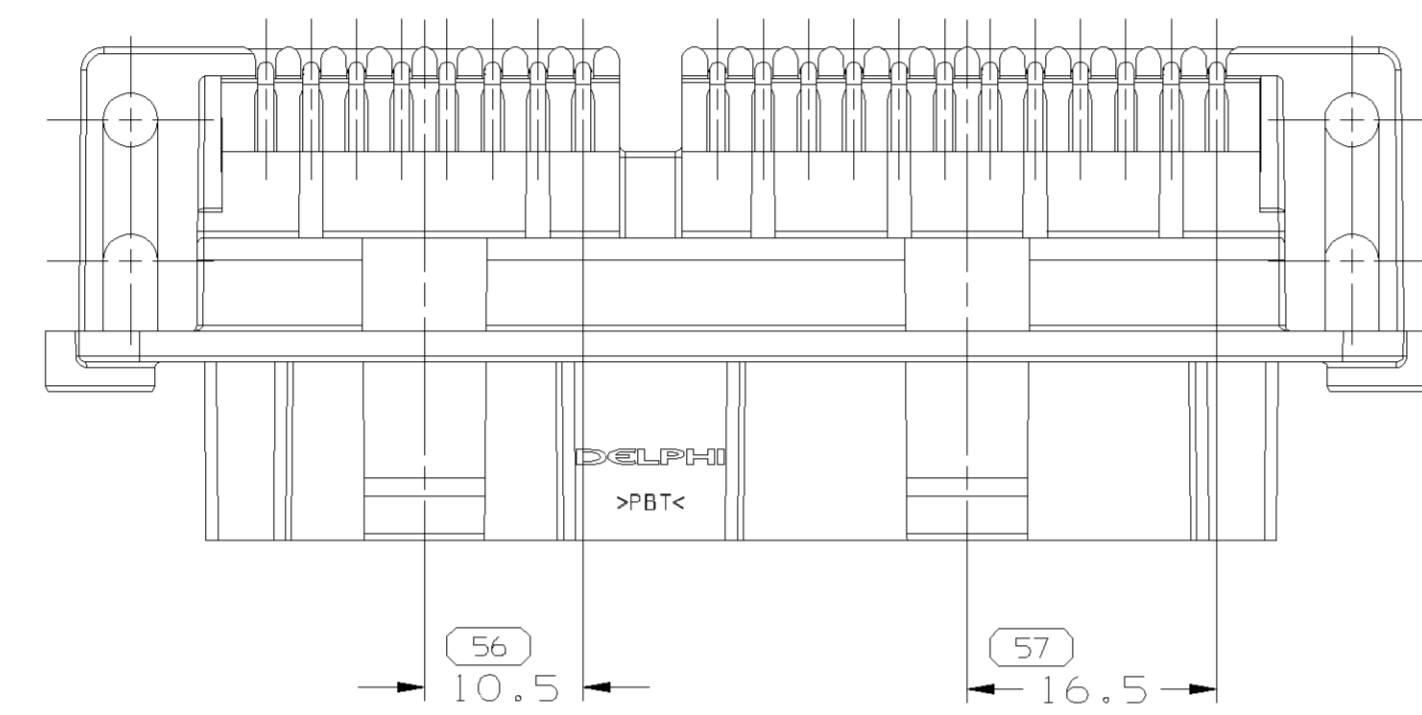


TYPE 102
SAME AS TYPE 101
EXCEPT AS SHOWN



TYPE 103
SAME AS TYPE 101
EXCEPT AS SHOWN



MATING CIRCUIT BOARD DETAIL

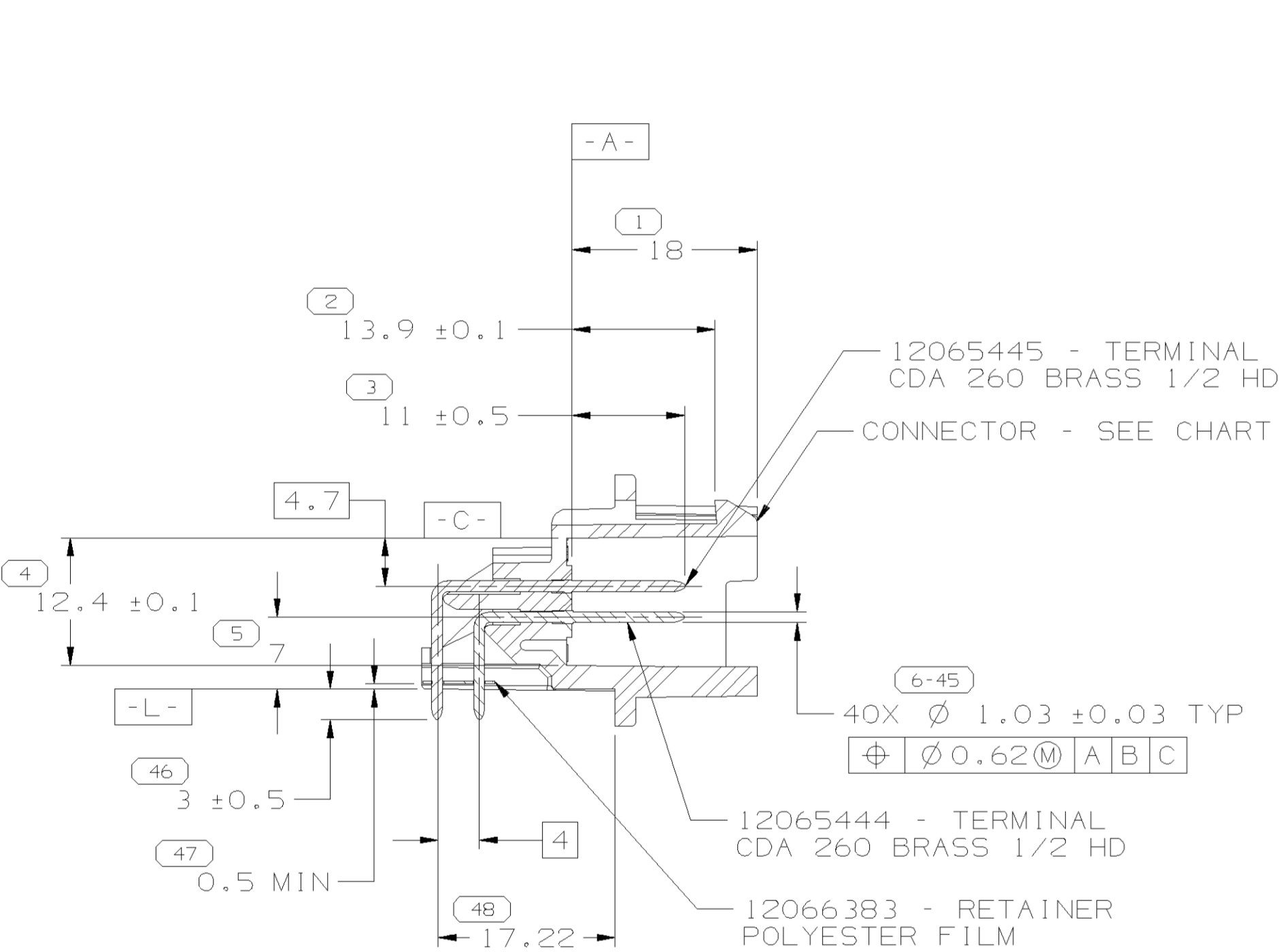
INSPECTION SYMBOLS SHOWN IN THIS VIEW
ARE FOR REFERENCE ONLY

SYMBOL DEFINITION		MISSING NUMBERS	
A DIMENSION WITHOUT AN INSPECTION REPORT SYMBOL DOES NOT REQUIRE INSPECTION. IT MAY BE CONTROLLED ON AN INDIVIDUAL COMPONENT DRAWING.	TOTAL NO. OF SYMBOLS ON DRAWING	48	50.
	LAST NO. USED	172	

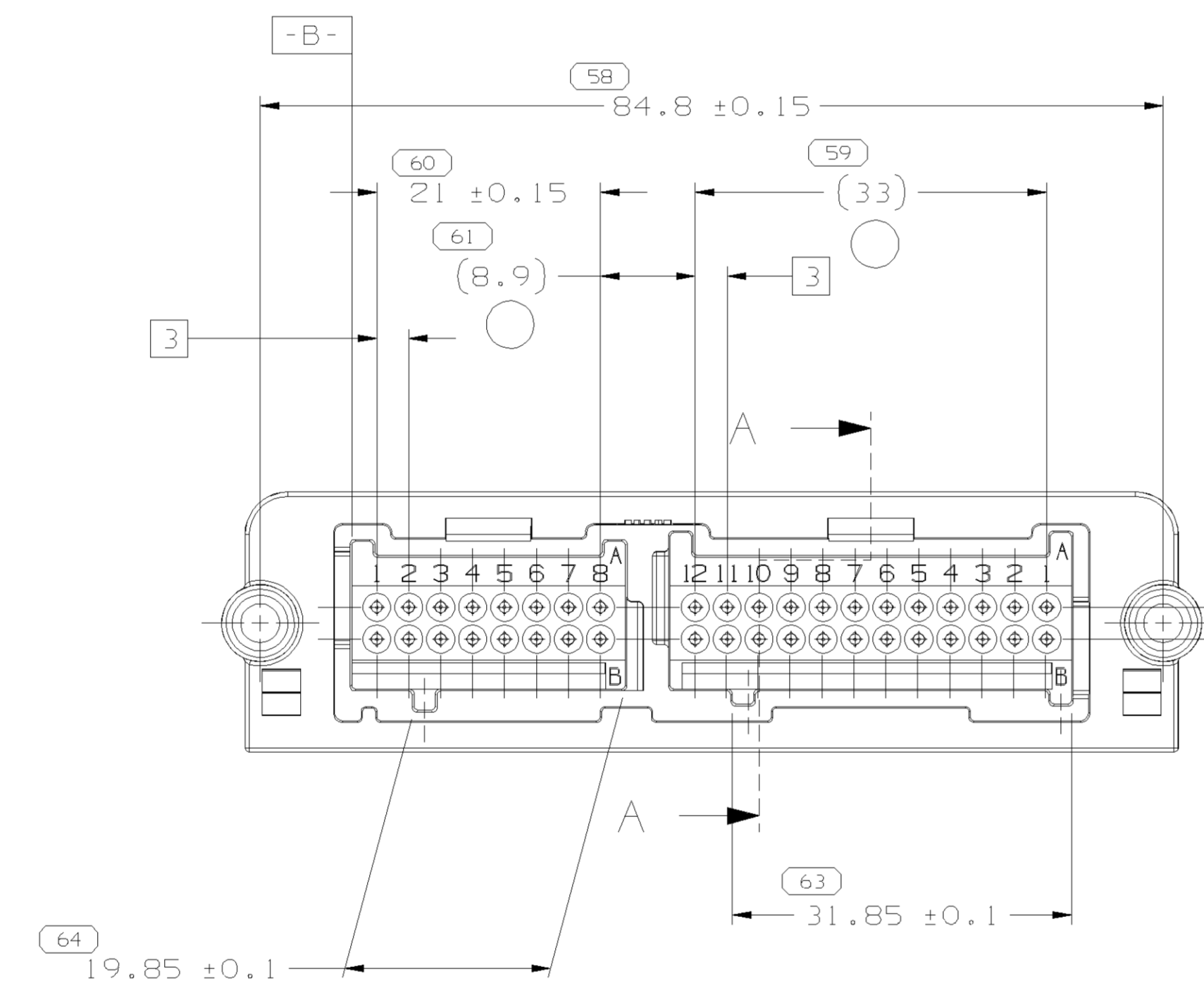
NOTES

1. RECOMMENDED BOARD THICKNESS IS 1.6 MM
2. SOLDER-THRU HOLE RECOMMENDED

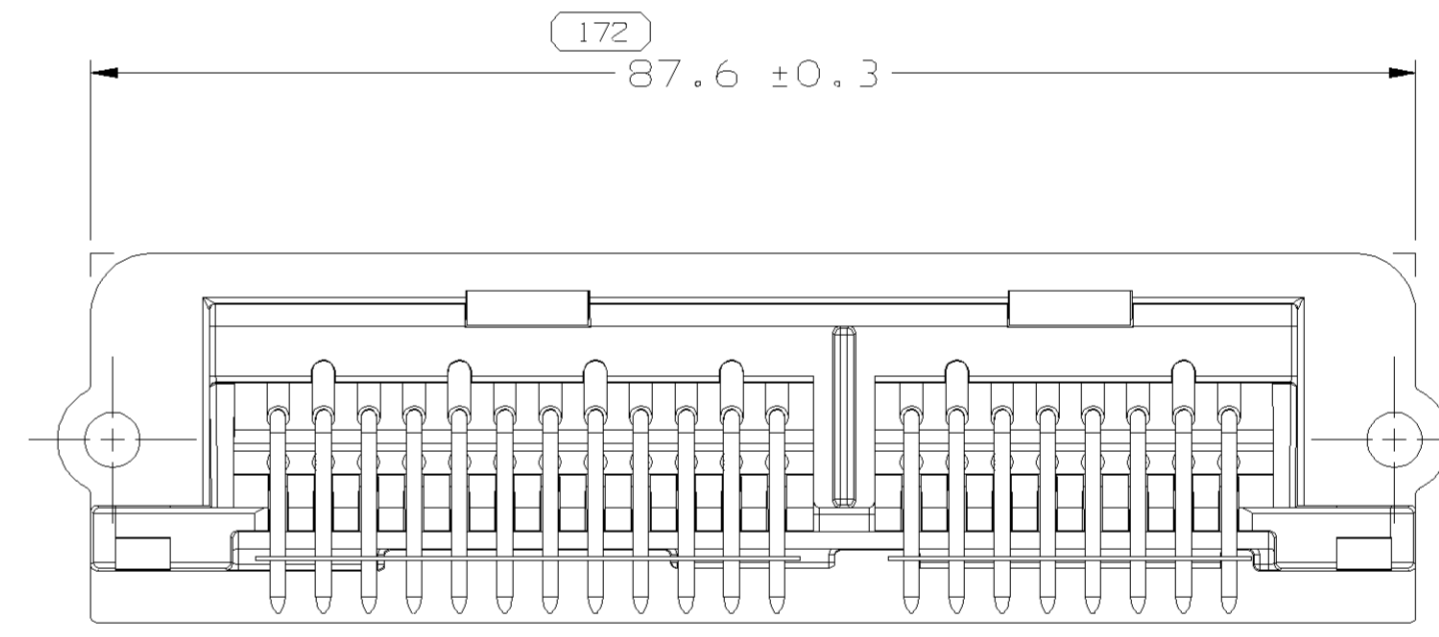
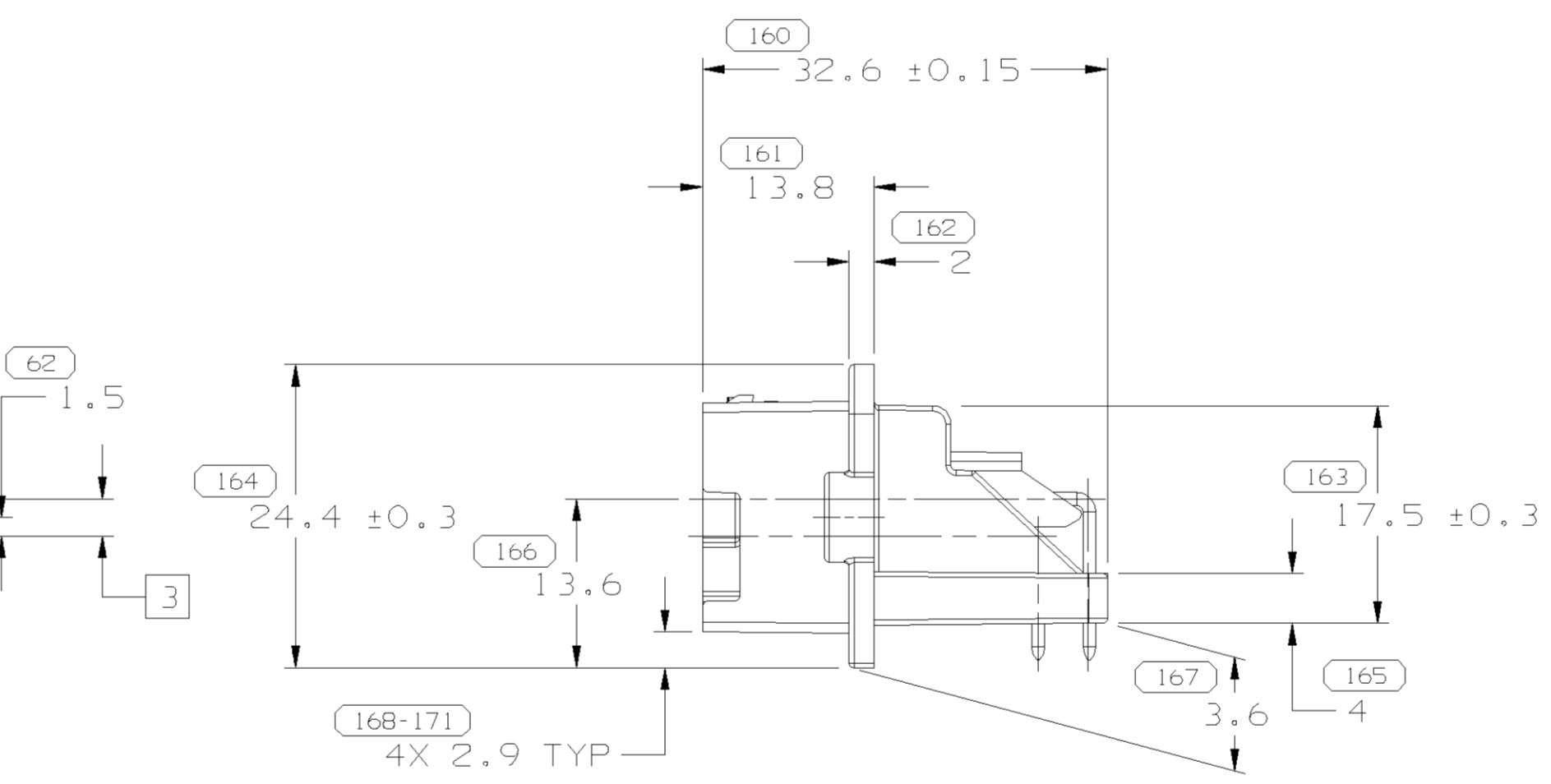
DWG STATUS		ZONE		REVISION HISTORY		AUTH		APVD	
DATE	STG	REV	N/P	CHG					
13AU99	R	01	-	-	CLEARED REV COLUMN & 15356975 - RELEASED	990005	JHN	RMM	RJ
17N003	R	02	-	-	ALL PARTS - REVISED DIM	248733	JYD	JYD	DMB
14JA04	R	03	-	-	ALL PARTS - REMOVED DIM 50 & REVISED DIMS (3 PLCS)	250404	EVM	EOV	DMB



SECTION A - A

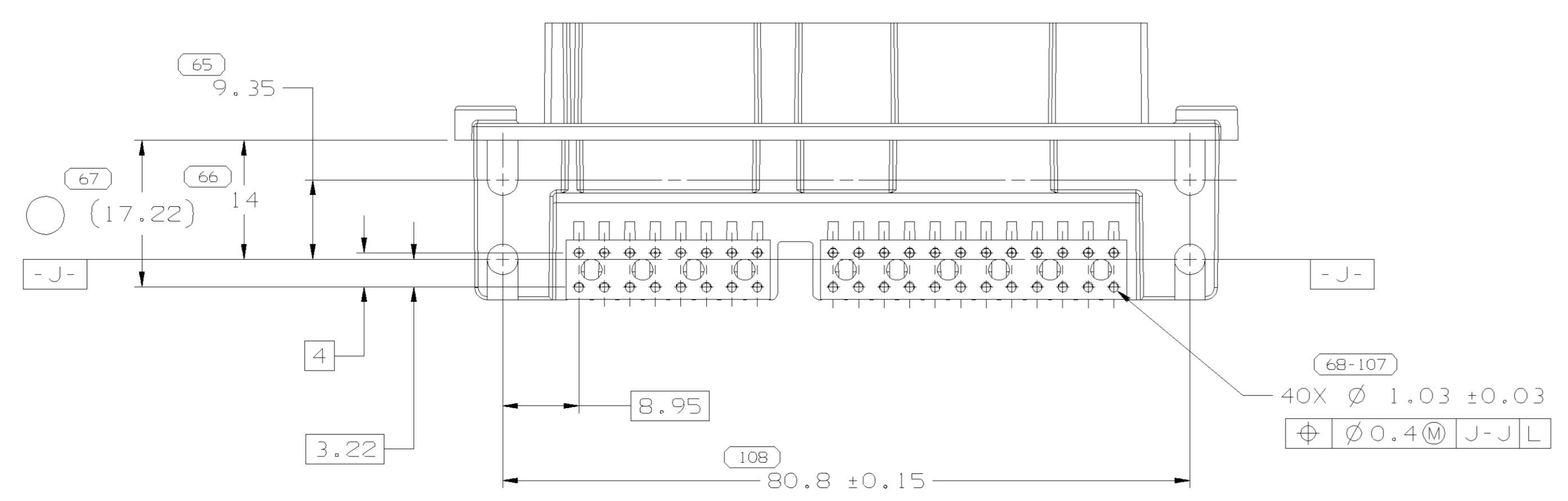


TYPE 101

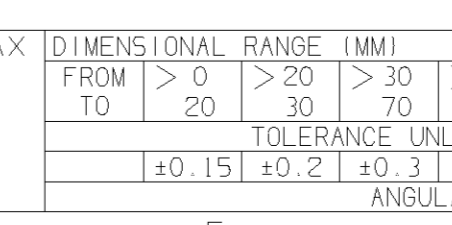
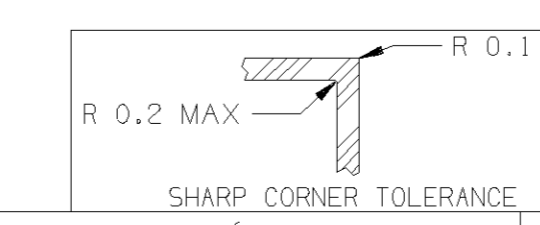


NOTES

1. UNLESS OTHERWISE SPECIFIED AND/OR INDICATED: DIMENSIONS ARE TO FACE OF VIEW SHOWN AND AUTOMATICALLY ROUNDED BY COMPUTER FOR INSPECTION. (SEE MATH MODEL FOR PRECISE DIMENSIONS.) FOR ALL OTHER DIMENSIONS NOT SHOWN BUT REQUIRED FOR TOOL BUILD, SEE MATH MODEL FOR PRECISE TOOL PATH DATA.
2. SEALING CODE 0 - UNSEALED
3. THIS PART IS NOT CONTROLLED FOR AUTOMATIC FEEDING.
4. MATING COMPONENTS OR EQUIVALENT: SEE CHART



PART NO	STG	REV	N/P	STATUS	TYPE	MATERIAL SPECIFICATION AND COLOR	MATING CONNECTOR	HEADER PART NUMBER
15356975	R	01	AB		103	M4698002 PBT GF30 BLK	12084945	12110206
15354673	R	A4	-		102	M4698016 PBT GF30 BLU LT	12092629	12110206
12191050	R	A5	-		101	M4698003 PBT GF30 GRA	12084945	12110088
							16 WAY	24 WAY
								HEADER PART NUMBER



DIMENSIONAL RANGE (MM)	TOLERANCE
FROM > 0 TO > 20	±0.15
> 20 TO > 30	±0.2
> 30 TO > 40	±0.3
> 40 TO > 50	±0.4
> 50 TO > 63	±0.5
> 63 TO > 80	±0.6
> 80 TO > 100	±0.8
> 100 TO > 150	±1
> 150 TO > 200	±1.2
> 200 TO > 250	±1.5
> 250 TO > 300	±2
> 300 TO > 400	±2.5

CHART	ET
FROM > 0 TO > 20	±0.15
> 20 TO > 30	±0.2
> 30 TO > 40	±0.3
> 40 TO > 50	±0.4
> 50 TO > 63	±0.5
> 63 TO > 80	±0.6
> 80 TO > 100	±0.8
> 100 TO > 150	±1
> 150 TO > 200	±1.2
> 200 TO > 250	±1.5
> 250 TO > 300	±2
> 300 TO > 400	±2.5

DELPHI
DELPHI PACKARD ELECTRIC SYSTEMS
WARREN, OH

DR	DATE
APV01 J. VAZQUEZ S.	31MR98
APV02 J. VAZQUEZ S.	31MR98
APV03 D. JONES	14AP98
APV04	
APV05	

MATERIAL SPEC CHART

UNLESS OTHERWISE SPECIFIED
PERFECT FORM REQUIRED FOR FEATURES OF SIZE AT MMC.
TRUE POSITION TOLERANCES AND RELATED DATUMS APPLY AT
CONDITION OF SIZE INDICATED IN FEATURE CONTROL FRAME.
ALL OTHER GEOMETRIC TOLERANCES AND RELATED DATUMS
APPLY TO THE SEPARATE TRUE POSITION CALLOUTS MAY BE
MADE SEPARATELY, REGARDLESS OF MAX WETTED.

ALL DIMENSIONS ARE IN MILLIMETERS

DRAWING NAME
TAXI CONN 40 M MIC/P 100 N/A HEADER

DRAWING NUMBER
15354729

SIZE AO SCALE 2:1 FRAME NO 1 OF 1 SHEET NO 1 OF 1 STG REV N/P R 03