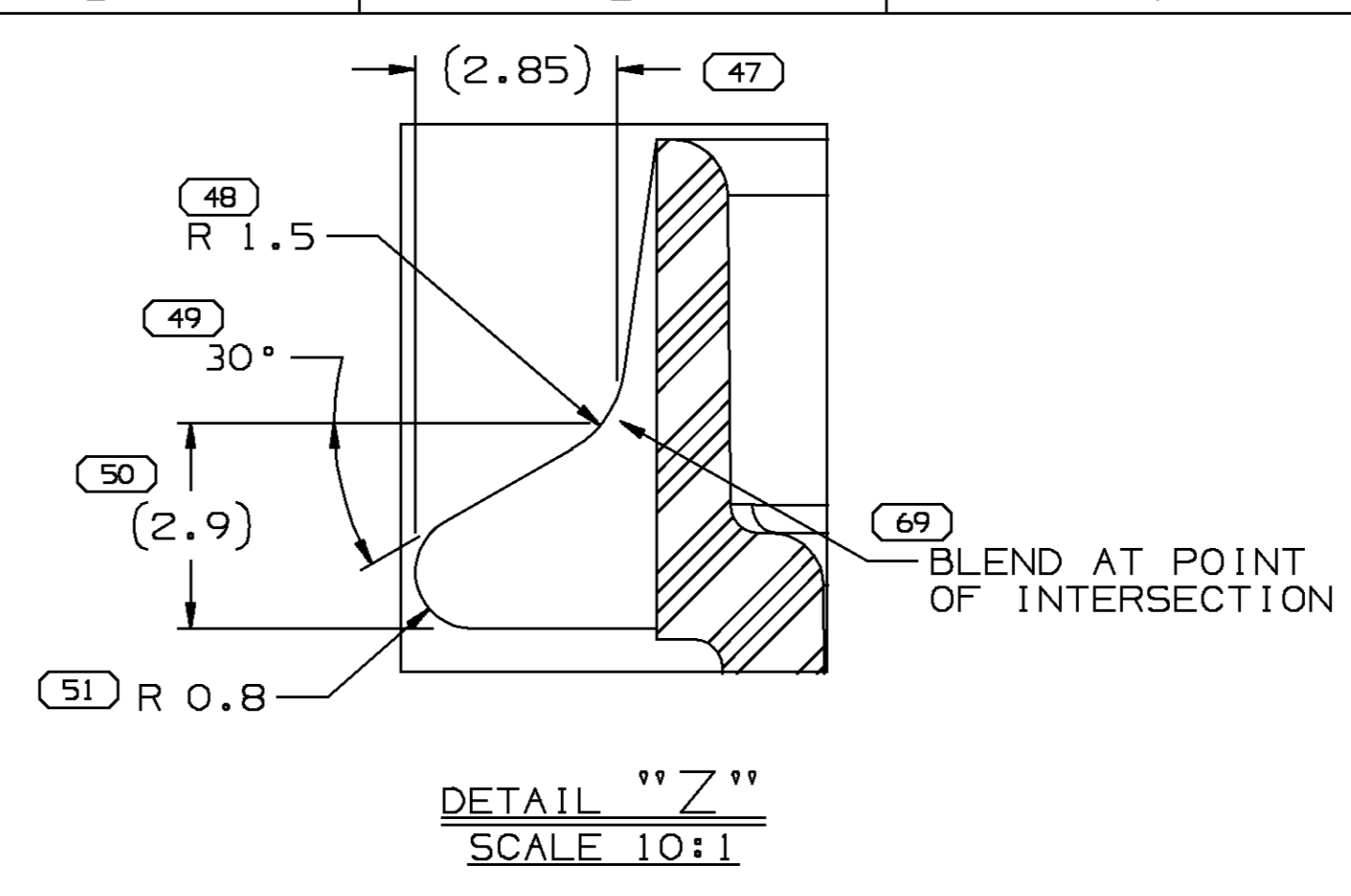


SYMBOL DEFINITION		MISSING NUMBERS	
THE NUMBER INSIDE THE SYMBOL CORRESPONDS TO THE NUMBER ON THE INSPECTION REPORT FOR THIS DRAWING/PART NUMBER	TOTAL NO. OF SYMBOLS ON DRAWING	70	
	LAST NO. USED	81	



DWG STATUS				REVISION HISTORY				AUTH		DR		CK		APVD	
DATE	STG	REV	CHG	N/P	ZONE										
23MR99	R	001	-	-											
Cleared REVISION COLUMN & 15355009 -															
REVISED GRAPHICS															
								193707 JAK JAK KM							

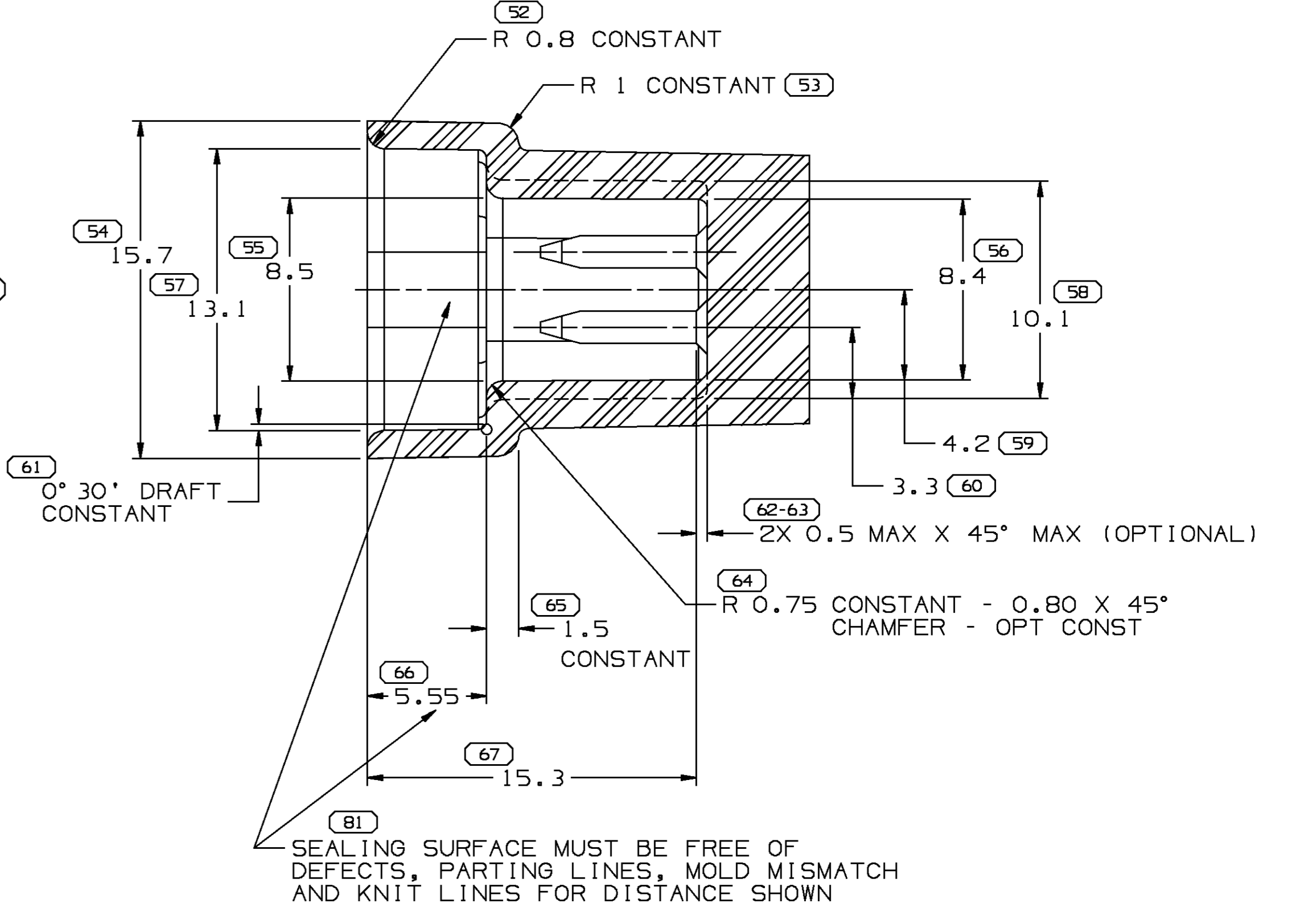
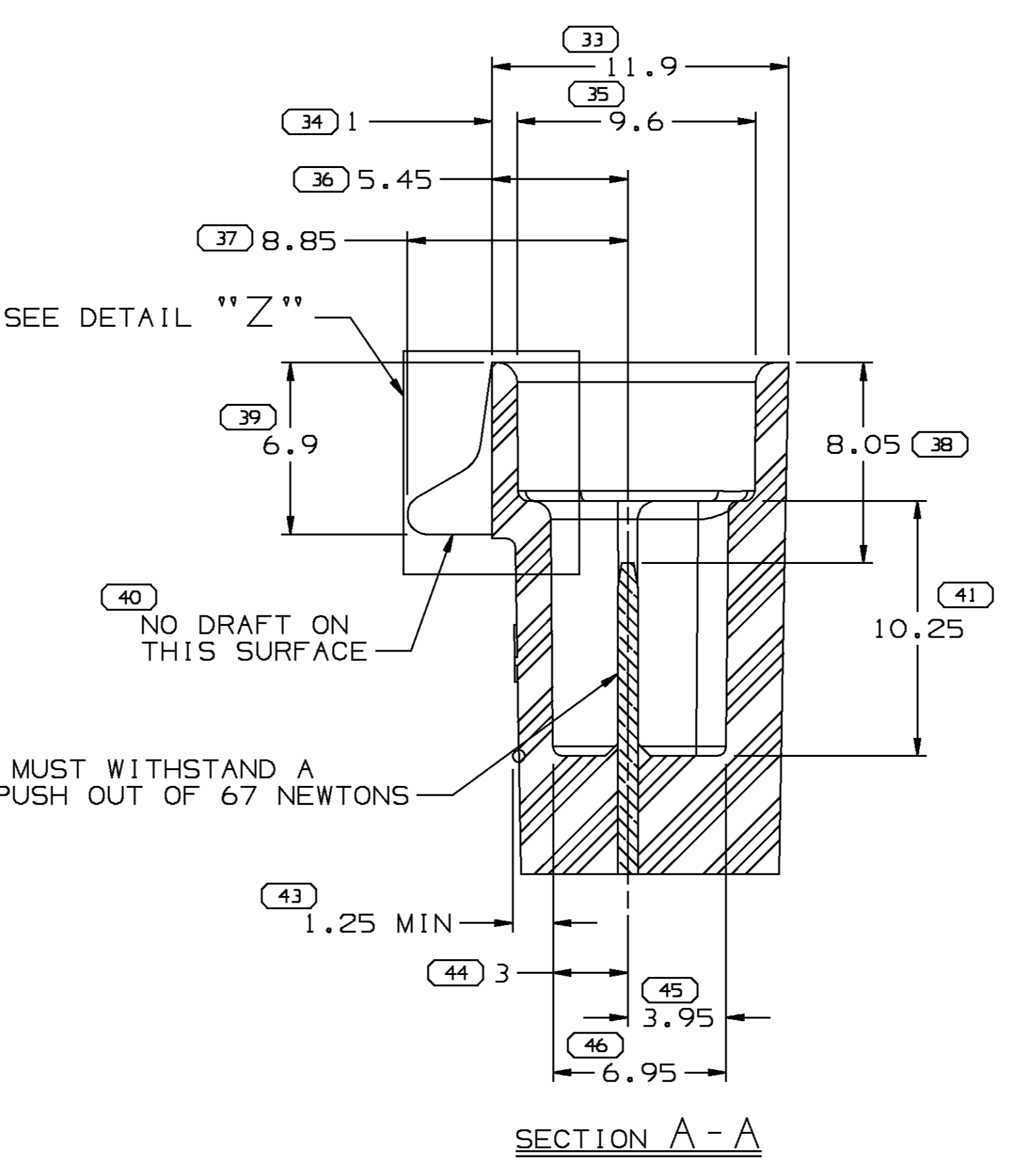
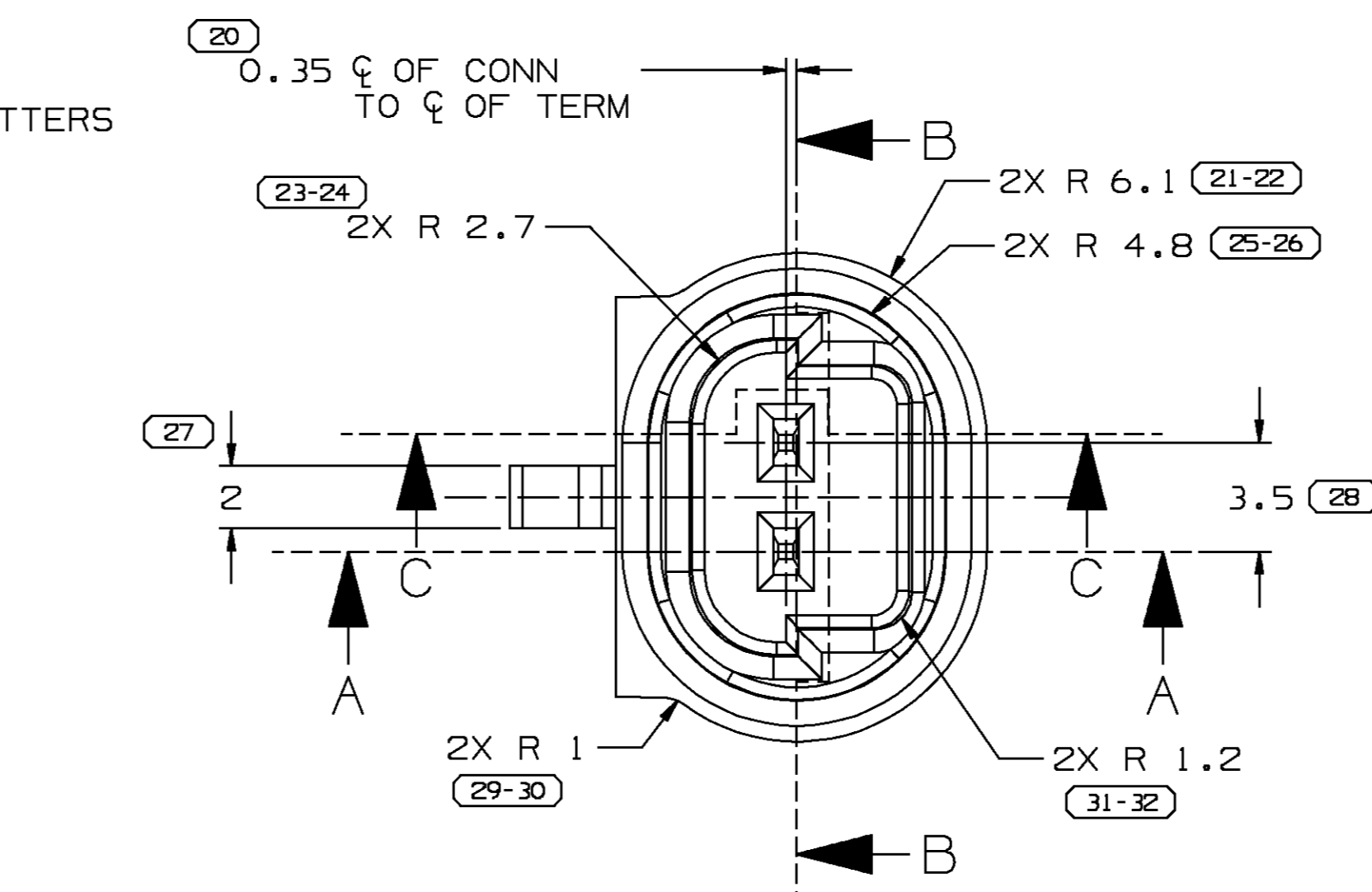
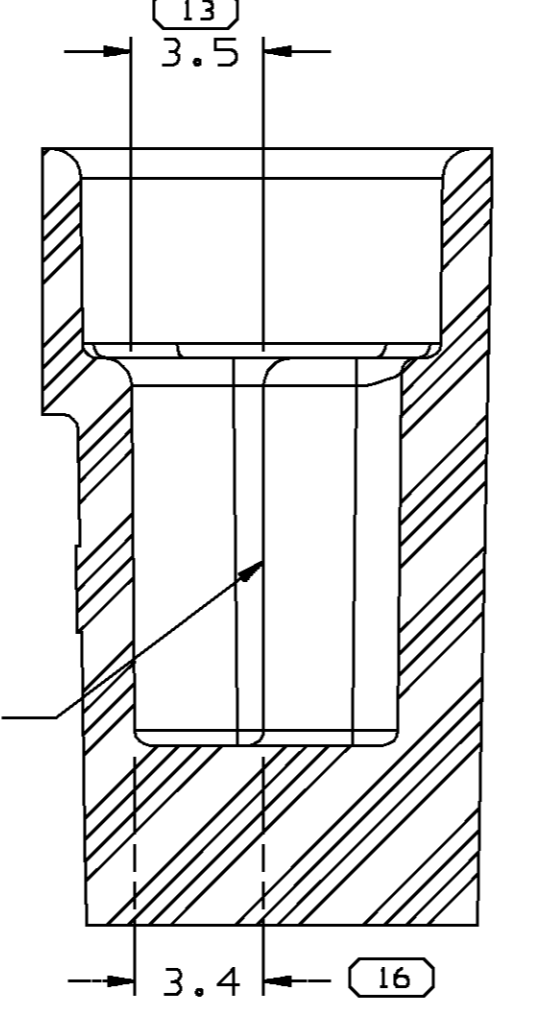
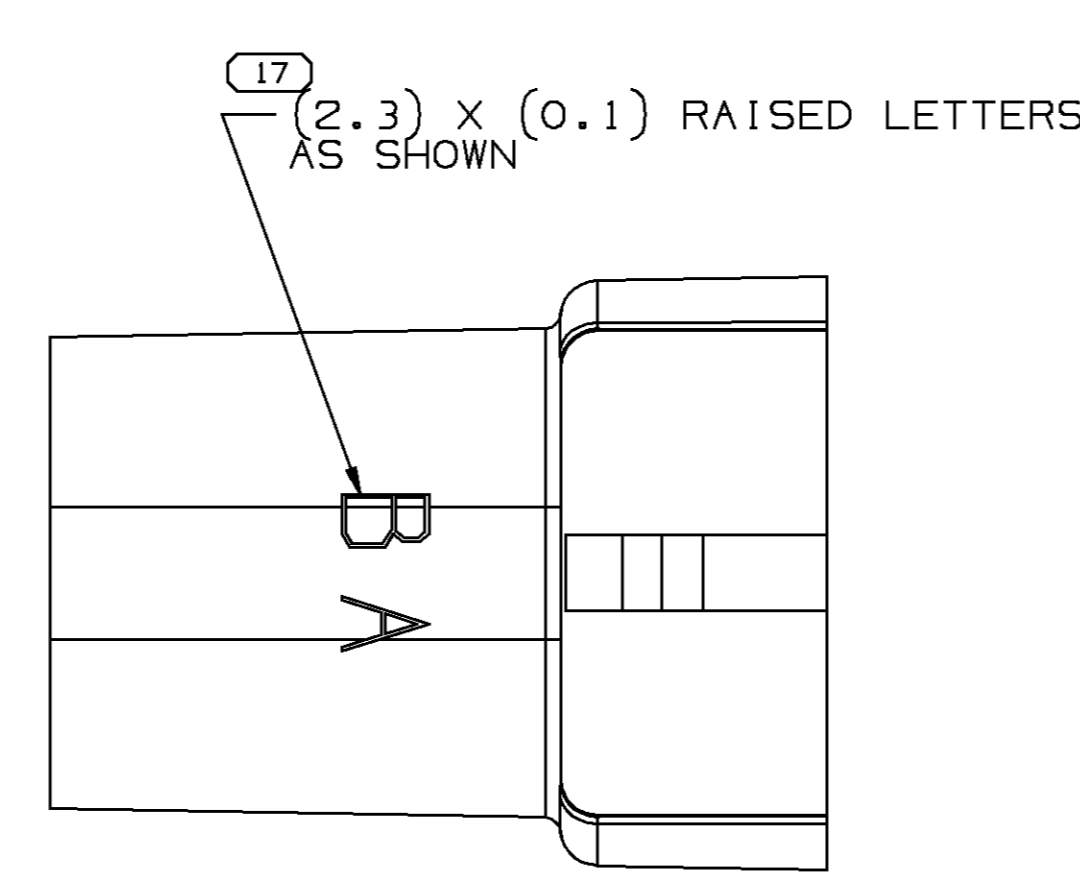
**MATERIAL SPECIFICATIONS**

**RECOMMENDED**  
 BASE METAL - CDA-210, GILDING, EXTRA SPRING TEMPER  
 PLATING - 0.0050±0.0025 MM THICK TIN

**MINIMUMS**  
 ELECTRICAL CONDUCTIVITY - ≥20% IACS AT 20°C. USE OF A MATERIAL WITH CONDUCTIVITY <20% IACS MUST BE APPROVED BY PACKARD ELECTRIC MATERIALS ENGINEERING.  
 TENSILE STRENGTH - 407 MPa  
 PLATING - FOR LOW ENERGY (≤5v) AND NON-PASSENGER COMPARTMENT POWER CIRCUITS, 0.0050±0.0025 MM THICK TIN. FOR MATERIALS CONTAINING 10% OR MORE ZINC, AN UNDERPLATE OF COPPER 0.0050±0.0025 MM THICK IS REQUIRED.

**MINIMUMS**  
 UNPLATED = 0.813 ±0.025  
 TIN PLATED = 0.823 ±0.030

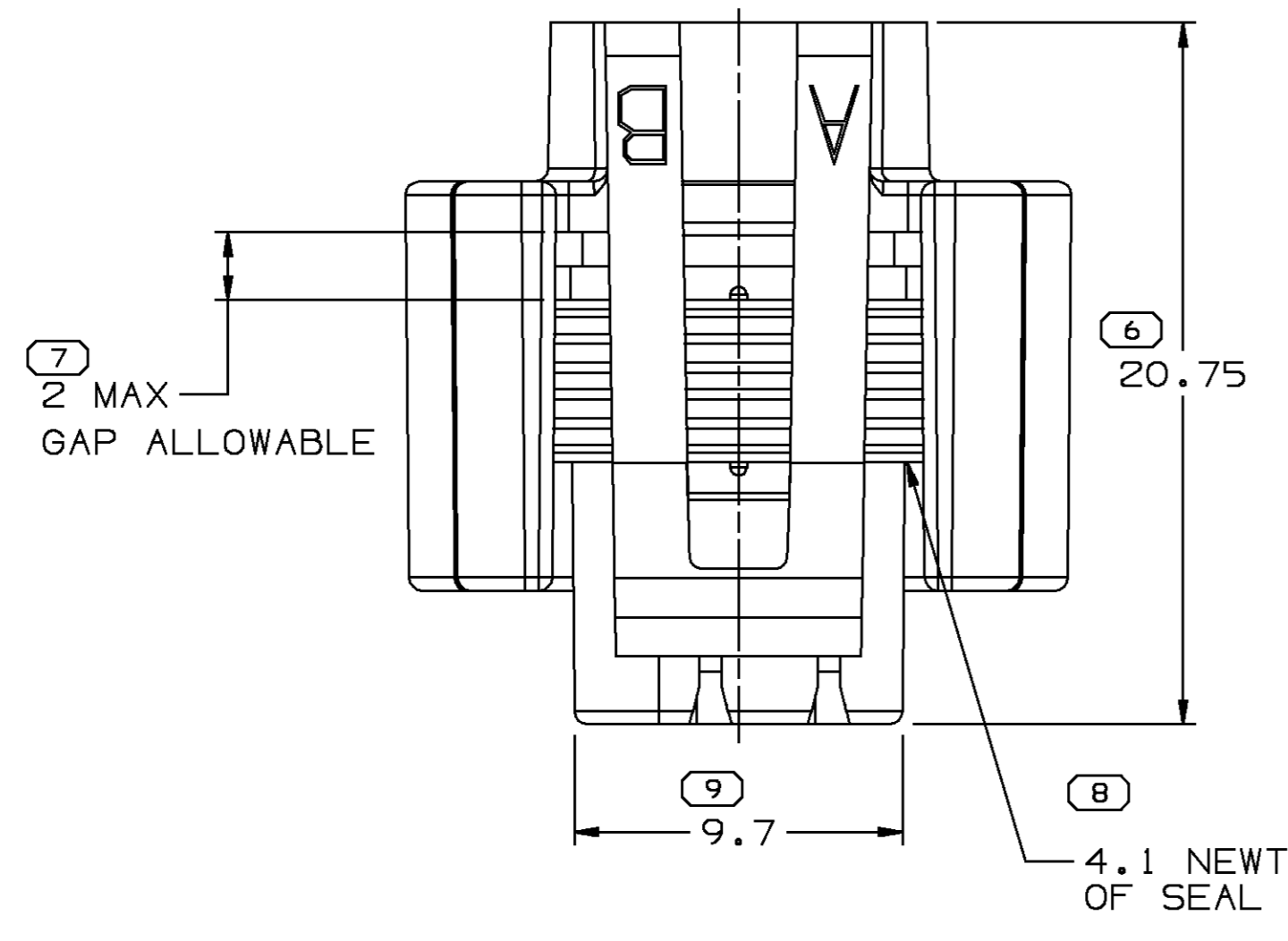
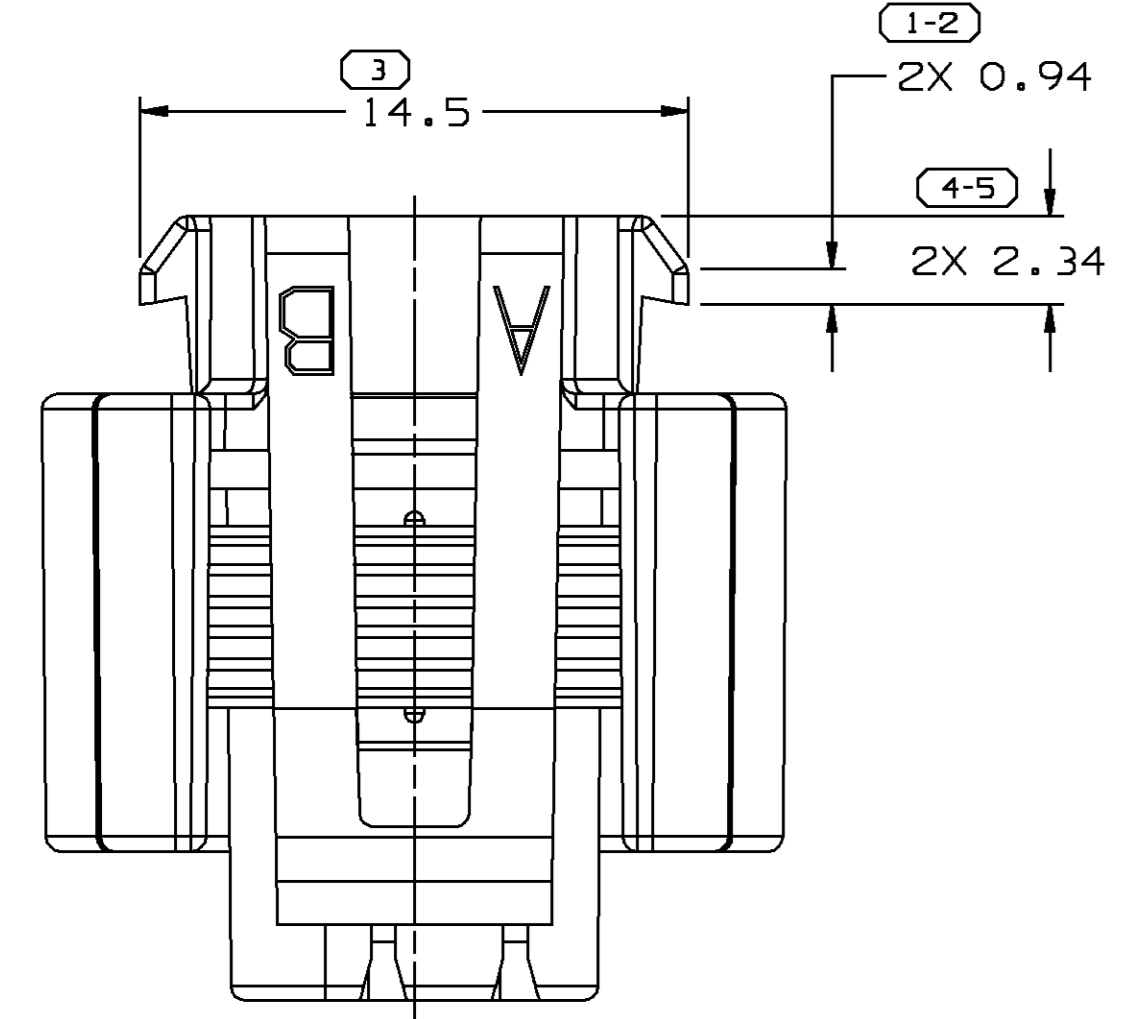
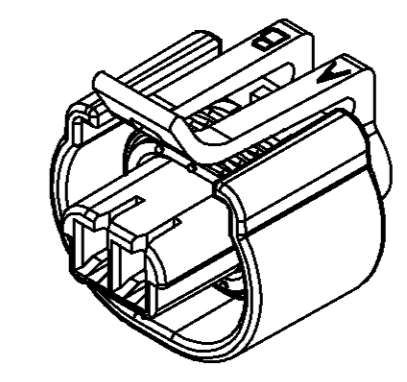
**MATING BLADE INFORMATION**  
 SCALE 8:1



- NOTES:
- UNLESS OTHERWISE SPECIFIED AND/OR INDICATED: DIMENSIONS ARE TO FACE OF VIEW SHOWN AND AUTOMATICALLY ROUNDED BY COMPUTER FOR INSPECTION. (SEE MATH MODEL FOR PRECISE DIMENSION) ALL RADII 0.40 DRAFT IS 1° ON ALL OUTSIDE SURFACES
  - RECOMMENDED MATERIAL - GLASS FILLED NYLON OR POLYESTER
  - WHEN USING THIS INFORMATION FOR A NEW DESIGN, REQUEST THE LATEST COPY OF THIS PRINT FROM PACKARD ELECTRIC

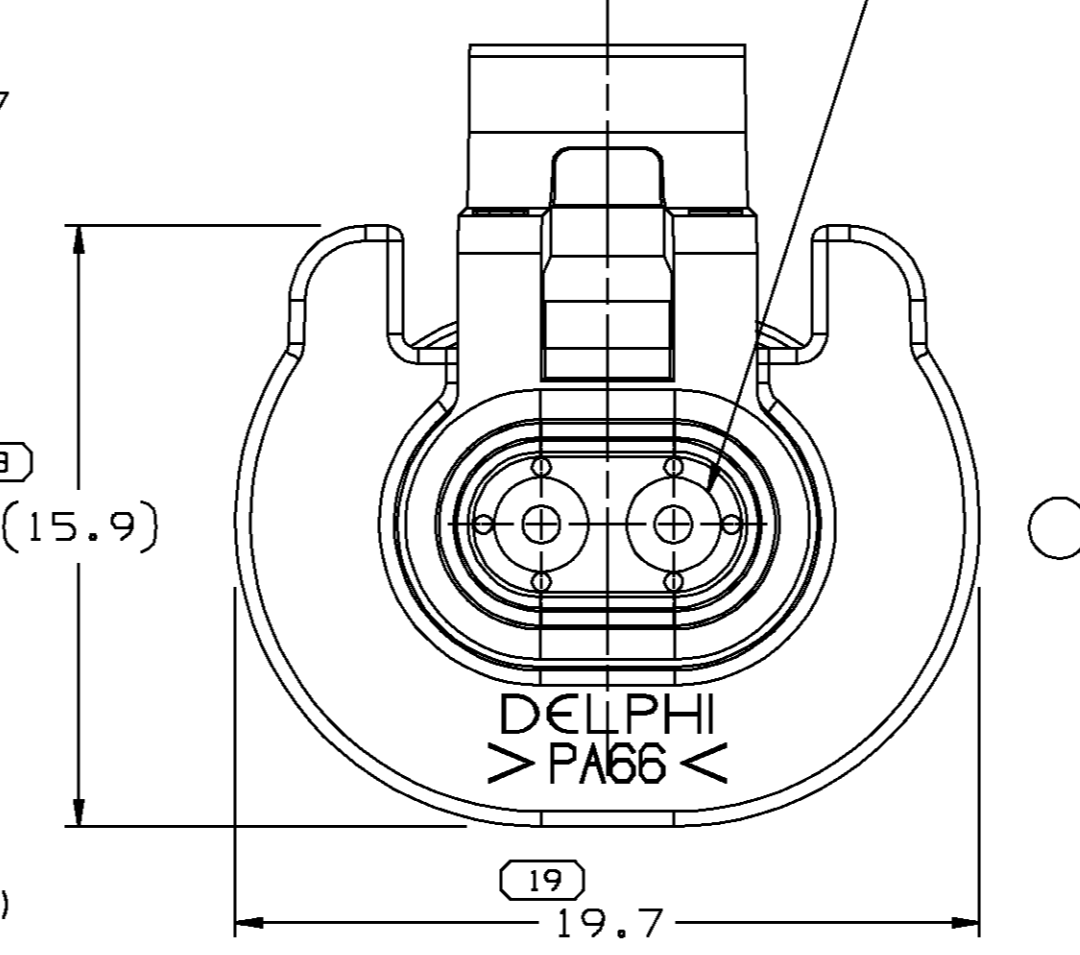
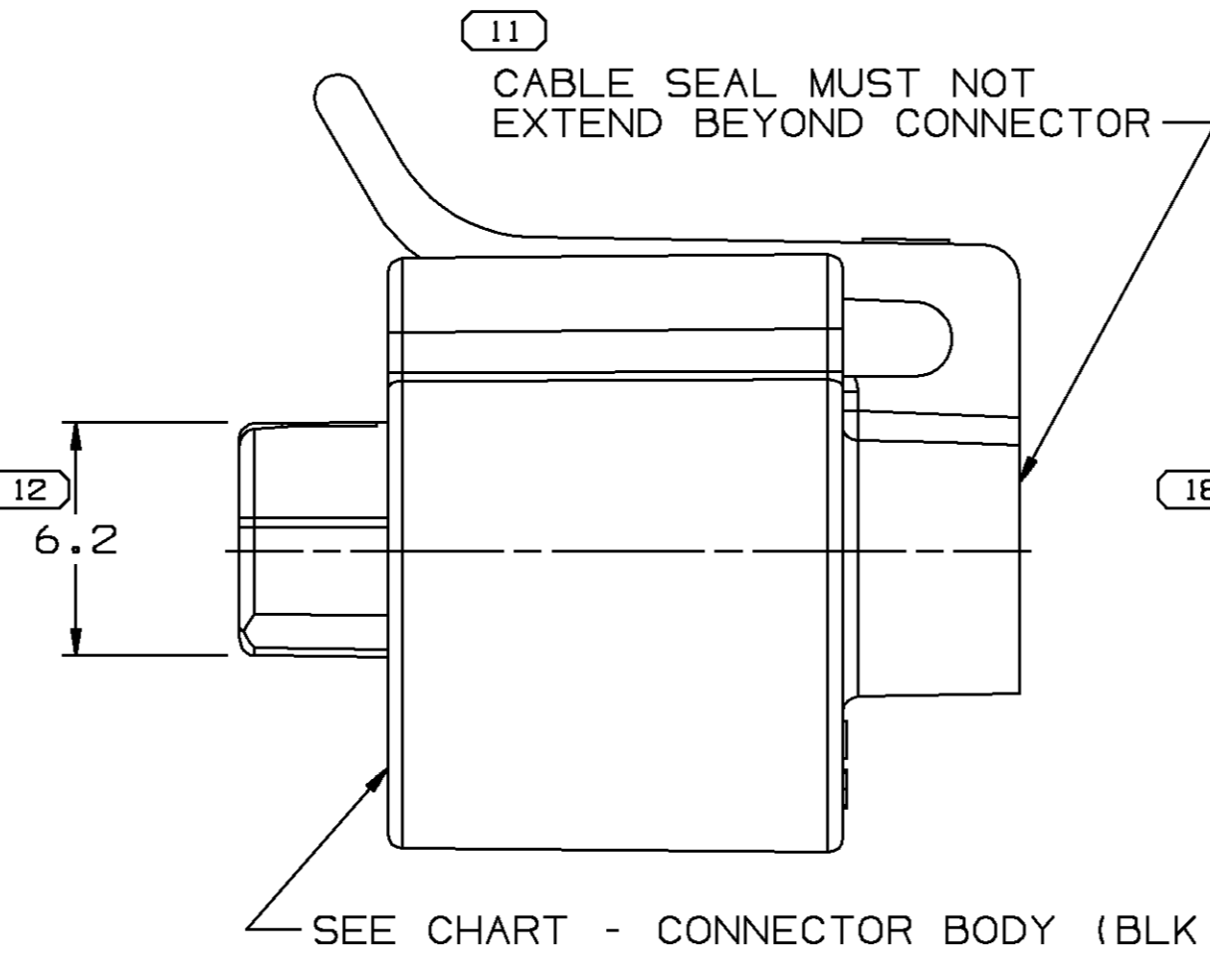
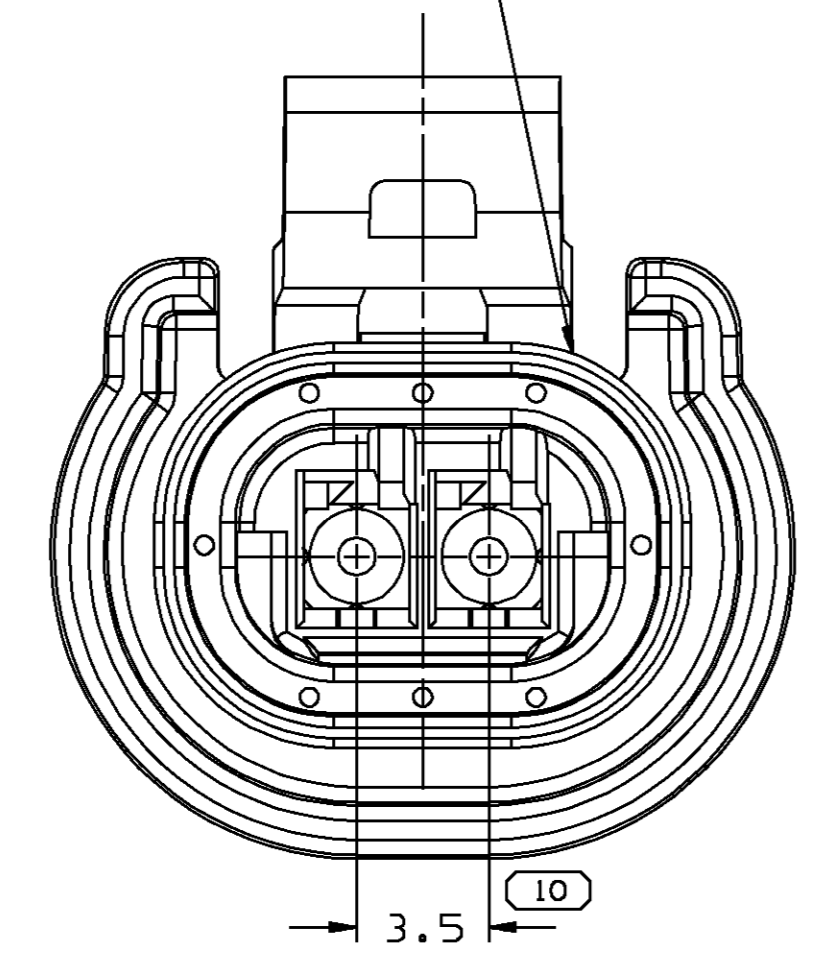
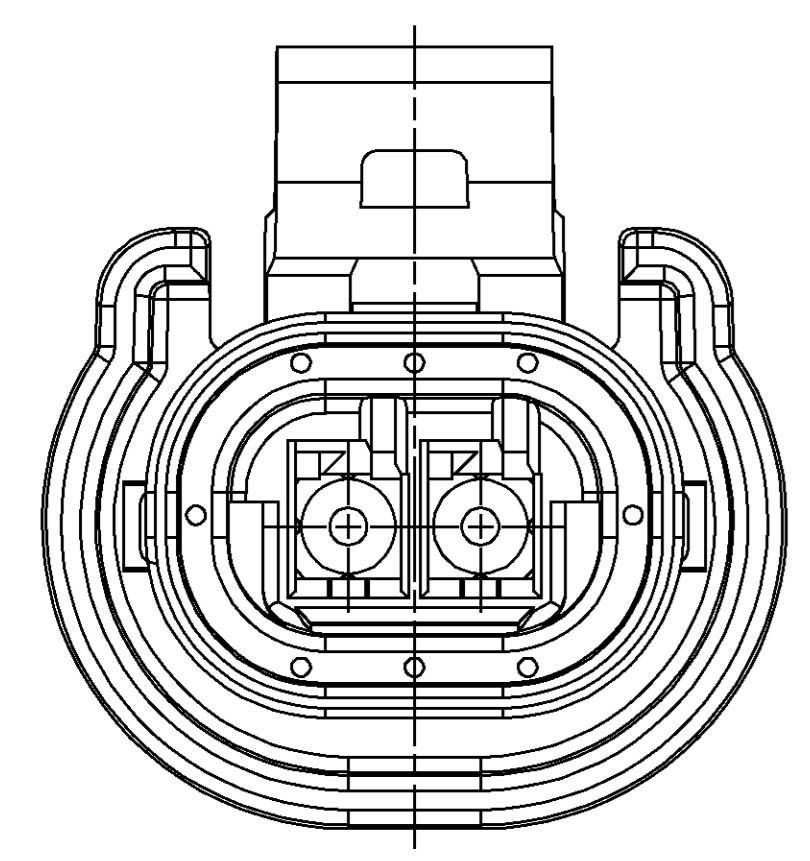
**MATING CONNECTOR INFORMATION**

- NOTES:
- UNLESS OTHERWISE SPECIFIED AND/OR INDICATED: DIMENSIONS ARE TO FACE OF VIEW SHOWN AND AUTOMATICALLY ROUNDED BY COMPUTER FOR INSPECTION. (SEE MATH MODEL FOR PRECISE DIMENSION)
  - MATING COMPONENTS:  
 TERMINAL 12124075 OR EQUIVALENT  
 MAX CABLE O.D. MUST BE LESS THAN 2.68  
 CONNECTOR SEAL 15355008 OR EQUIVALENT  
 CABLE SEAL 12110514 OR EQUIVALENT
  - THIS PART IS NOT CONTROLLED FOR AUTOMATIC FEEDING.
  - TERMINAL POSITION ASSURANCE FEATURE IS ACHIEVED BY THE USE OF FULL TO SEAT TERMINAL DESIGN
  - SEALING CODE 3  
 DESIGN WILL PASS SALT FOG AND IMMERSION TEST AFTER CONDITIONING AS SPECIFIED IN ESA-710 (METRI-PACK) - WHEN MATED TO MATING PART OR EQUIVALENT
  - WHEN PARTS ARE SHIPPED THEY MUST BE PACKED IN PLASTIC BAGS OR SHIPPING CONTAINERS MUST BE LINED WITH PLASTIC LINERS. BAGS OR LINERS MUST BE SEALED TO AVOID FOREIGN MATTER.
  - THIS CONN ASM CANNOT BE USED IN A FUEL ENVIRONMENT BECAUSE THE CONN SEAL MATERIAL IS SILICONE.



15355008 - CONNECTOR SEAL (SEE NOTE 7)

12110514 - CABLE SEAL



TYPE 102  
 SAME AS TYPE 101 EXCEPT AS SHOWN

TYPE 101

PART NO	STG	REV	N/P	STATUS	TYPE	CONNECTOR BODY
15355059	R	A2		OBsolete	102	15355057
15355009	R	B1			101	15355007

THE DIMENSION NUMBERS SHOWN BELOW INDICATE DIMENSIONS THAT ARE PROCESS SENSITIVE FOR PART PRODUCTION

① ② ③ ④ ⑤ ⑥ ⑦ ⑧ ⑨ ⑩ ⑪ ⑫ ⑬ ⑭ ⑮ ⑯ ⑰ ⑱ ⑲ ⑳ ㉑ ㉒ ㉓ ㉔ ㉕ ㉖ ㉗ ㉘ ㉙ ㉚ ㉛ ㉜ ㉝ ㉞ ㉟ ㊱ ㊲ ㊳ ㊴ ㊵ ㊶ ㊷ ㊸ ㊹ ㊺

DIMENSIONS ENCLOSED IN ( ) INDICATE REFERENCE DIMENSIONS AND NO TOLERANCE LIMITS ARE ESTABLISHED

**DELPHI**  
Automotive Systems

MATERIAL SPEC SEE DRAWING

SEE CHART E

FROM	TO	20	30	70	100
0	> 20	> 30	> 70	> 100	

TOLEANCE UNLESS OTHERWISE SPECIFIED  
 10.151 ±0.21 (+0.31 -0.41) ±0.5  
 ANGULAR TOLEANCE ± 2

**PART DRAWING**

CODE NUMBER 6900  
 DWG DATE 17JL98  
 SCALE 5:1  
 VOLUME cm³

DISTR CODE D

PART GEOMETRY 3D SOLID VIRTUAL ASM

UNLESS OTHERWISE SPECIFIED:  
 PERFECT FORM REQUIRED FOR FEATURES OF SIZE AT MMC. TRUE POSITION TOLERANCES AND RELATED DATUMS APPLY AT CONDITION OF SIZE INDICATED IN FEATURE CONTROL FRAME. ALL OTHER GEOMETRIC TOLERANCES AND RELATED DATUMS APPLY RFS. SEPARATE TRUE POSITION CALLOUTS MAY BE GAGED SEPARATELY, REGARDLESS OF DATUM REFERENCE.

UG CHANGE RESTRICTED NO MANUAL CHANGES

COPY OF MATH DATA DO NOT SCALE

REFERENCE 001

DR APVD1 FCO. KOPCA 17JL98  
 APVD2 FCO. KOPCA 20JL98  
 APVD3 K. MURPHY 17AU98  
 APVD4  
 APVD5

METRIC UNLESS OTHERWISE SPECIFIED, ALL DIMENSIONS ARE IN MILLIMETERS

THIRD ANGLE PROJECTION

DRAWING NAME TAXI ASM CONN 2F M/P 150.2 P25

SHEET NUMBER 1 OF 1  
 DRAWING NUMBER 15355058  
 DWG STATUS R 001  
 SIZZ A0