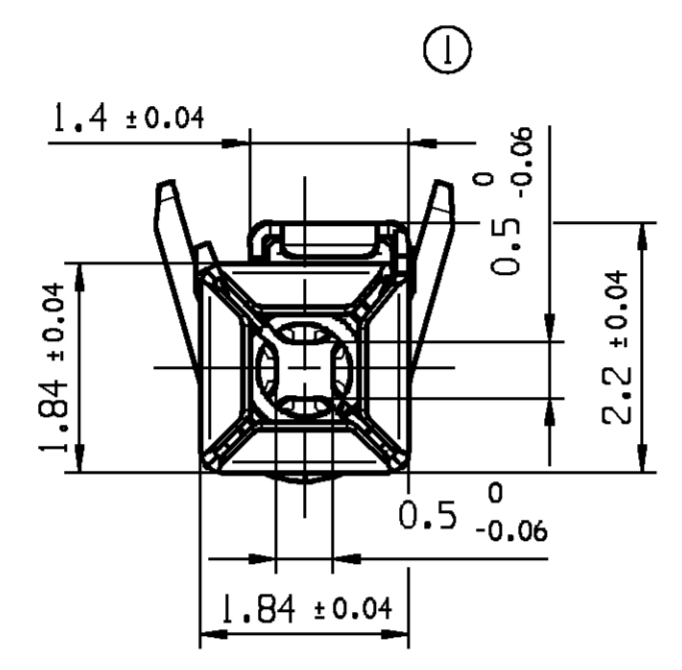
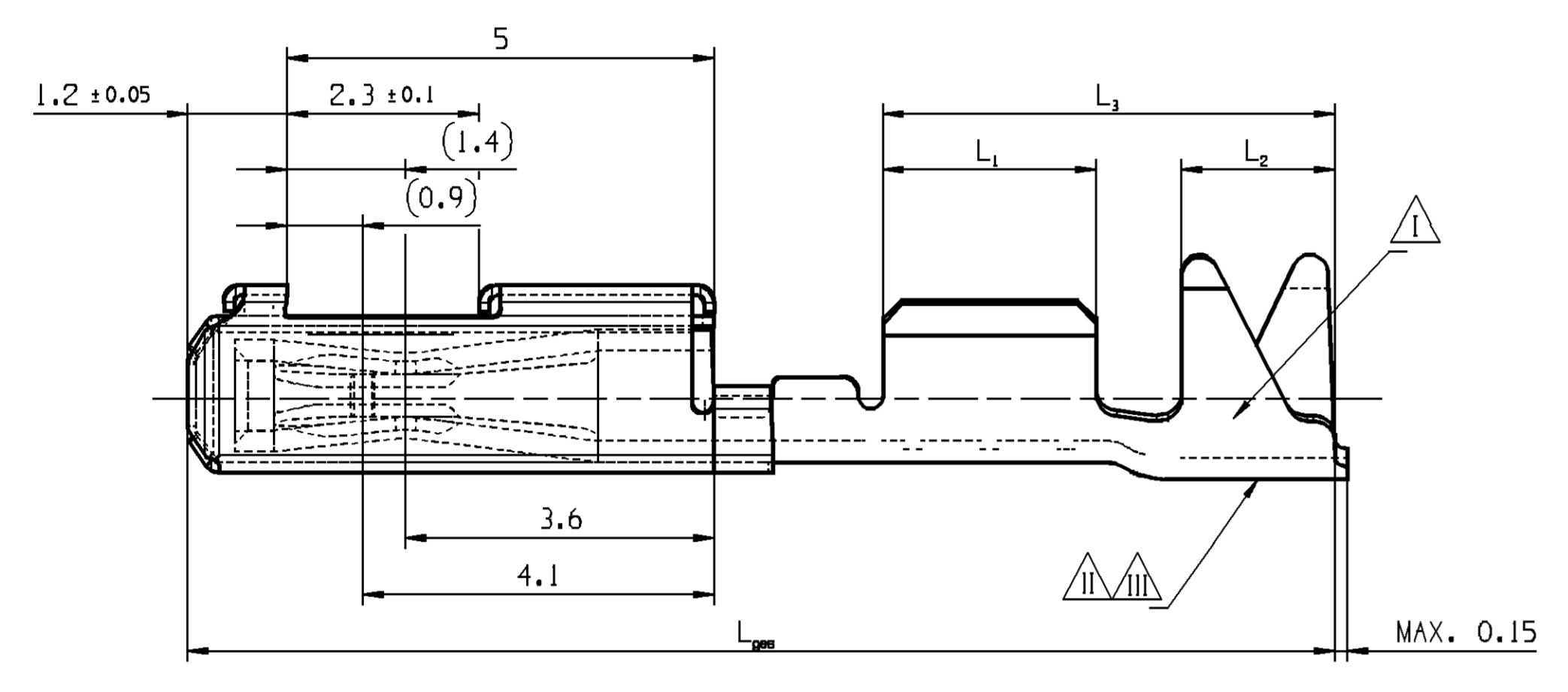


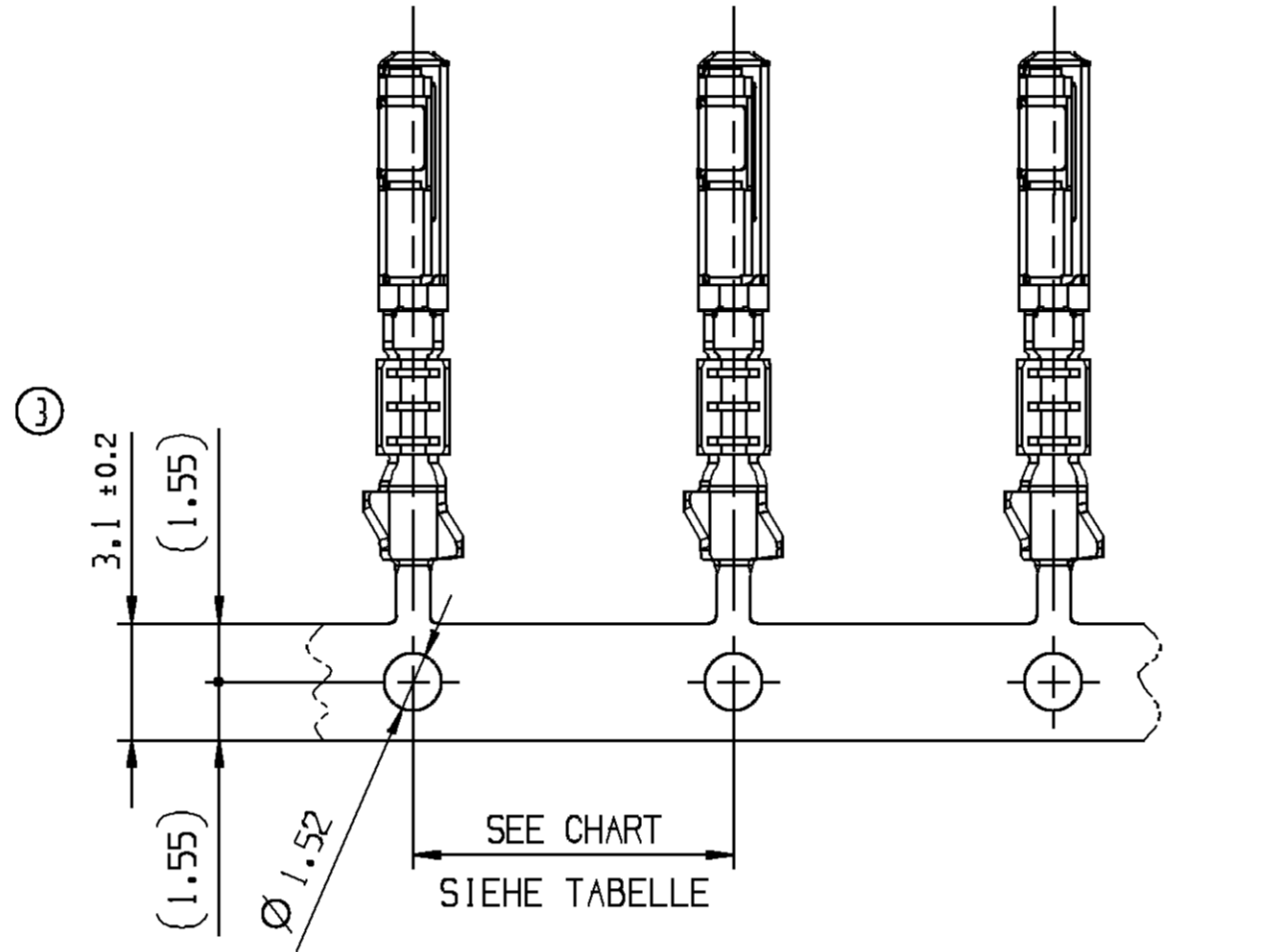
KEY PRODUCT CHARACTERISTICS				
SAFETY/COMPLIANCE	FIT/FUNCTION	TOTAL ON DRAWING	0	
S/C CHECKPOINTS	F/F CHECKPOINTS	LAST NO. USED	0	
NO & TYPE	DESCRIPTION	RATIONALE	PTS	ZONE

L _{max}	L ₁	L ₂	L ₁	R ₂ ± 0.1	R ₁ ± 0.1	H ₂ ± 0.2	H ₁ ± 0.2	B ₂ ± 0.2	B ₁ ± 0.2	PITCH TRANSPORT	SURFACE SLEEVE/UEBERFEDER OBERFLAECHE	MATERIAL SLEEVE/UEBERFEDER WERKSTOFF	MATERIAL BODY/BASISTEIL WERKSTOFF	VERSION AUSFUHRUNG	SURFACE BODY/BASISTEIL OBERFLAECHE	CROSS SECTION QUERSCH.	PART-NO.:	PART-REV	DATE DATUM	DWG STATUS			ZONE	REVISION HISTORY		AUTH	DR	APVD 1	APVD 2			
																				DATE	STG	REV		INITIAL RELEASE / FREIGABE	W.SAC					C.CVA	F.WIS	
13.50	5.30	1.80	2.50	0.90	0.60	2.64	1.90	2.57	1.93	5.08	BLANK	X10CrNi18 8	CuNi35TiMg	BASIC	p.Sn3	0.35-0.50	15426816	01	30SE03	22JUN06	01	AA	J11 D11	DIMENSIONS OF CONTACT POINTS ADDED VERMÄSSUNG DER KONTAKTPUNKTE HINZU								
13.50	5.30	1.80	2.50	0.90	0.80	3.23	2.52	2.82	2.57	10.16	BLANK	X10CrNi18 8	CuNi35TiMg			0.60-0.75	15426818	01	30SE03													
14.60	6.20	2.00	3.25	1.20	1.00	3.80	3.45	3.75	3.10	10.16	BLANK	X10CrNi18 8	CuNi35TiMg			1.00-1.50				12JUN07	02		L5	SURFACE GALV. ADDED OBERFLAECHE GALV. HINZU								
13.50	5.30	1.80	2.50	0.90	0.60	2.64	1.90	2.57	1.93	5.08	BLANK	X10CrNi18 8	CuNi35TiMg			0.35-0.50	15426815	01	30SE03													
14.60	6.20	2.00	3.25	1.20	1.00	3.80	3.45	3.75	3.10	10.16	BLANK	X10CrNi18 8	CuNi35TiMg			0.60-0.75	15426817	01	30SE03	19JUN07	03		E13	MATERIAL FPC ADDED MATERIAL FPC HINZU								
13.50	5.30	1.80	2.50	0.90	0.60	2.64	1.90	2.57	1.93	5.08	BLANK	X10CrNi18 8	CuNi35TiMg			1.00-1.50																
13.50	5.30	1.80	2.50	0.90	0.80	3.23	2.52	2.82	2.57	10.16	BLANK	X10CrNi18 8	CuNi35TiMg			0.35-0.50	13627447	01	12JAO7													
14.60	6.20	2.00	3.25	1.20	1.00	3.80	3.45	3.75	3.10	10.16	BLANK	X10CrNi18 8	CuNi35TiMg			0.60-0.75	13627448	01	12JAO7													
13.50	5.30	1.80	2.50	0.90	0.80	3.23	2.52	2.82	2.57	10.16	BLANK	X10CrNi18 8	CuNi35TiMg			1.00-1.50																
14.10	5.75	2.35	1.5	---	---	---	---	---	---	5.08	BLANK	X10CrNi18 8	CuNi35TiMg			---	13653606	01	19JUN07	04JUL08	R	03	AB	H/CS	TOLERANCES ADDED / TOLERANZEN HINZU							
14.10	5.75	2.35	1.5	---	---	---	---	---	---	5.08	BLANK	X10CrNi18 8	CuNi35TiMg			---	13653607	01	19JUN07													
14.10	5.75	2.35	1.5	---	---	---	---	---	---	5.08	BLANK	X10CrNi18 8	CuNi35TiMg			---	13653608	01	19JUN07													
14.10	5.75	2.35	1.5	---	---	---	---	---	---	5.08	BLANK	X10CrNi18 8	CuNi35TiMg			---	13914404	01	21FE13													
13.50	5.10	1.90	2.50	0.90	0.80	3.23	2.15	2.82	2.15	5.08	BLANK	X10CrNi18 8	CuNi35TiMg			0.50-0.75	13913309	01	21FE13													
																	13914406	01	21FE13	09JUN15	R	04	AB									
																				21SE17	R	04	AC	H13								

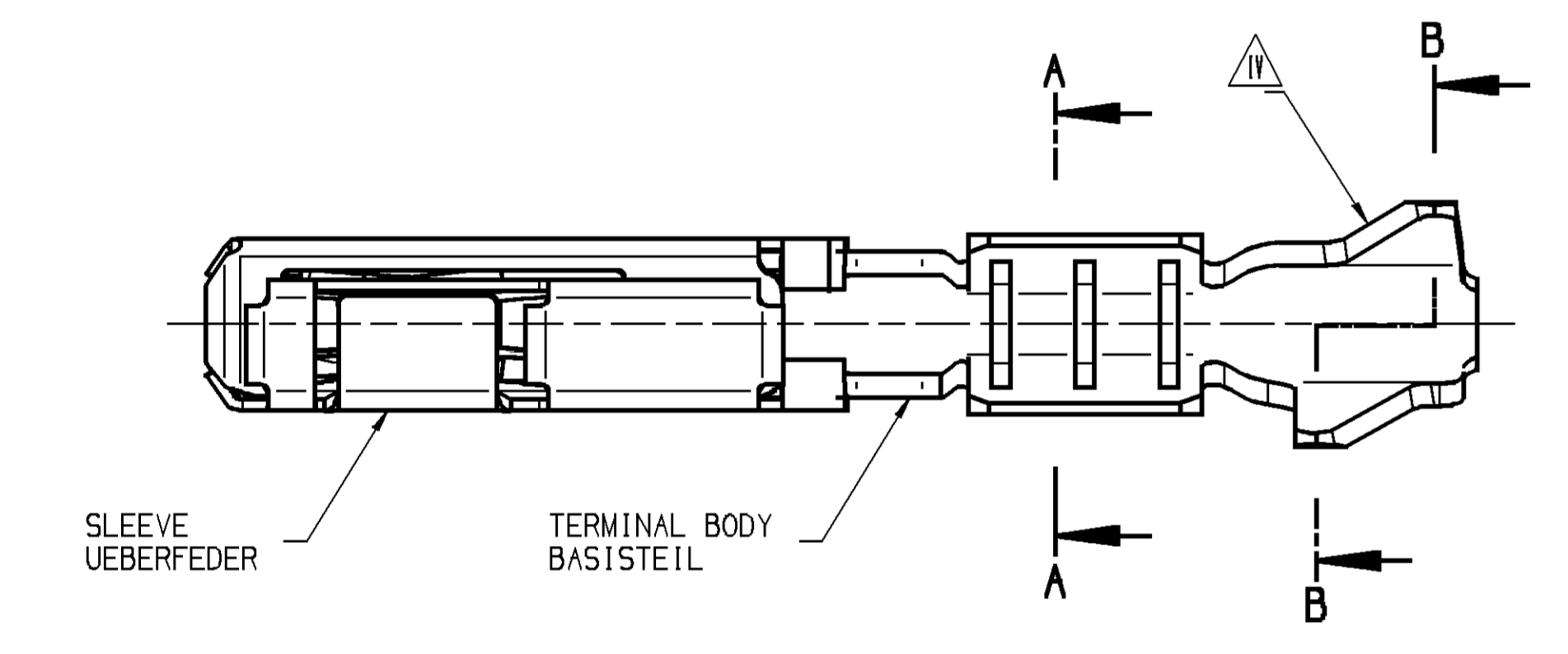
BASIC APPLICATION / STANDARD VARIANTE



VIEW OF THE CARRIER STRIP IS NOT IN SCALE
ABBILDUNG DES ANBINDUNGS-STREIFENS NICHT MASSSTÄBLICH

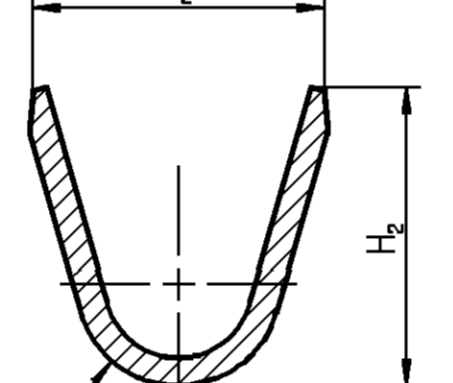
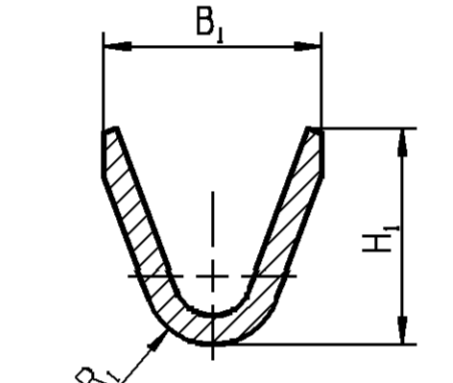


PROGRESSION IN THE CRIMP DIE
TRANSPORTRICHTUNG IM CRIMPWERKZEUG



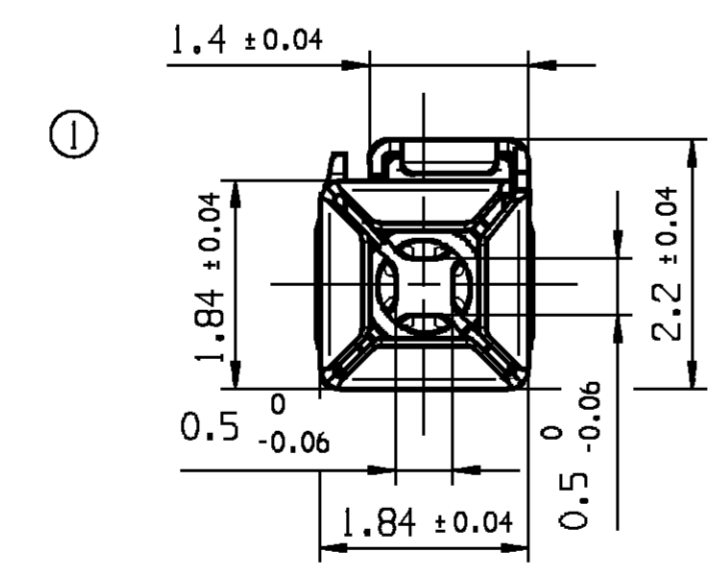
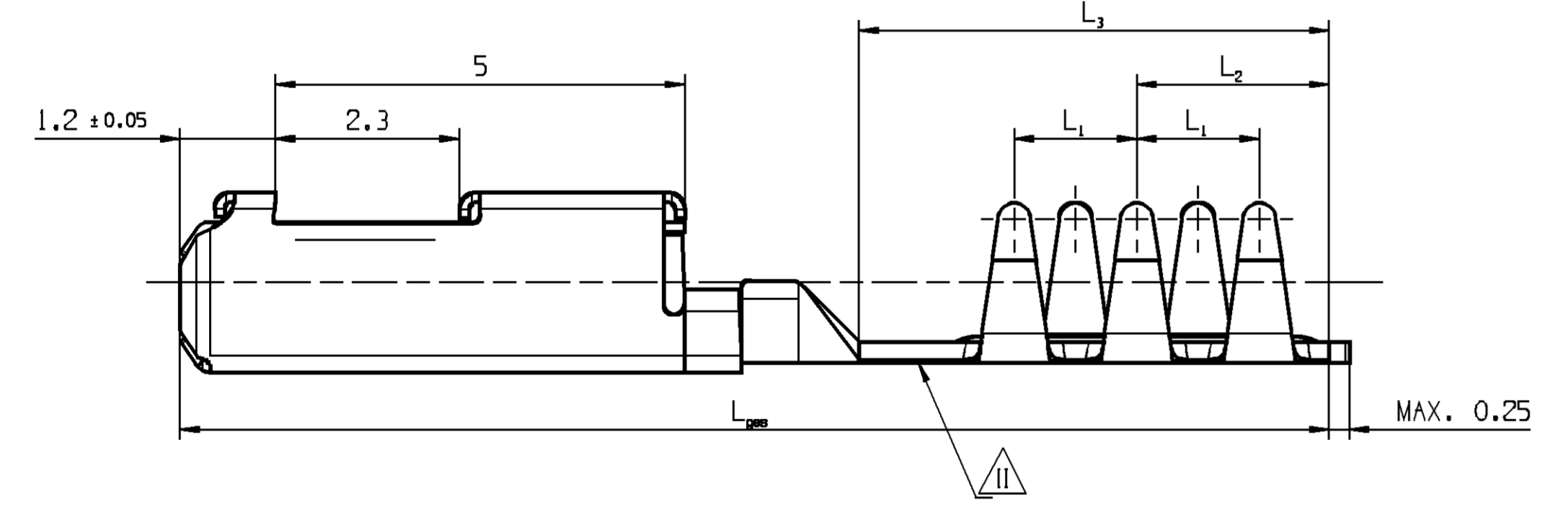
A-A 90°

B-B 90°

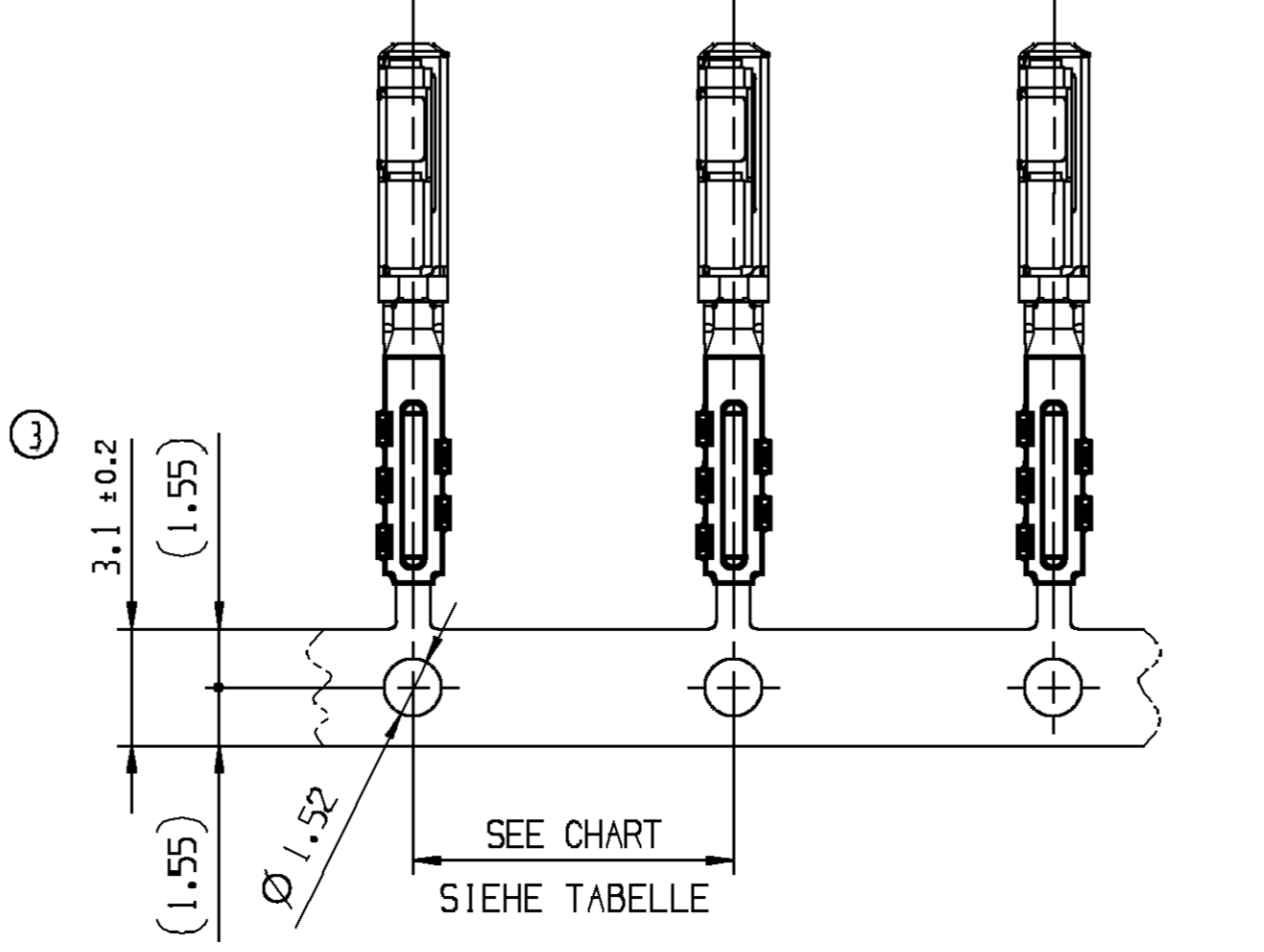


FLEXIBLE PRINTED CIRCUIT APPLICATION / FPC VARIANTE

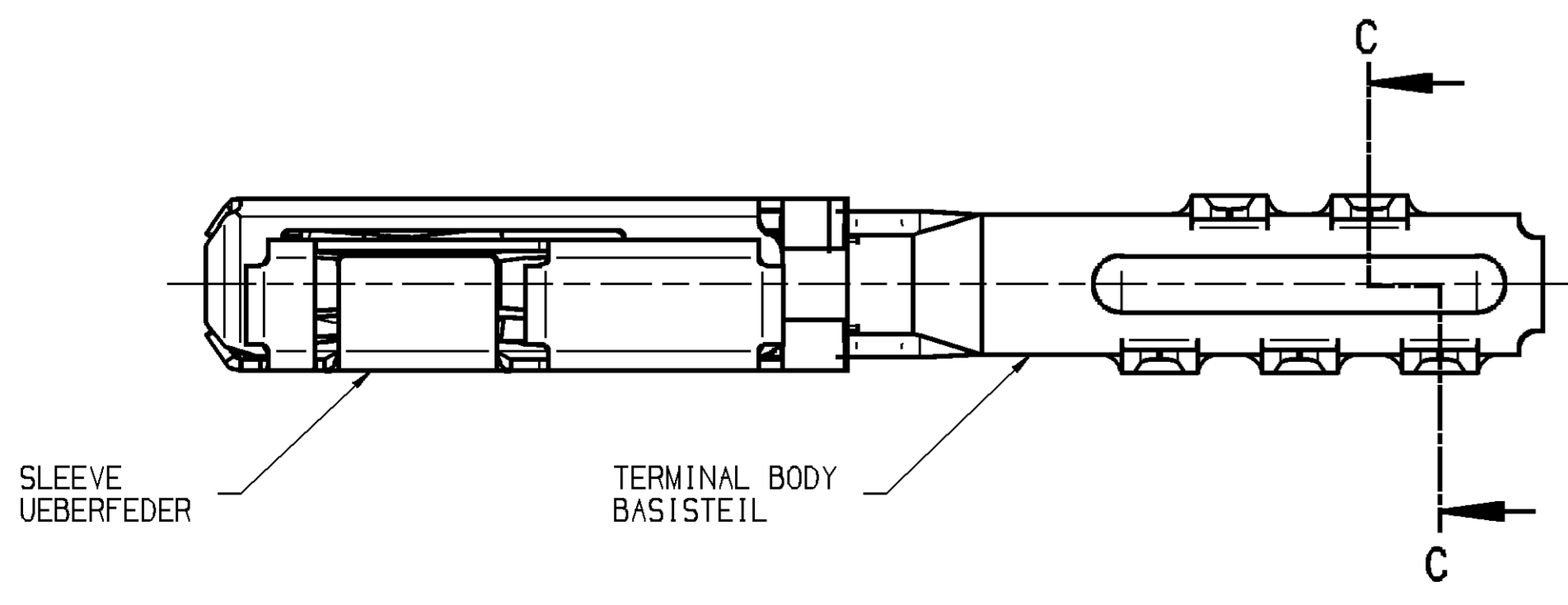
MISSING DIMENSIONS, SEE BASIC APPLICATION
FEHLENDE MASSE, SIEHE STANDARD VARIANTE



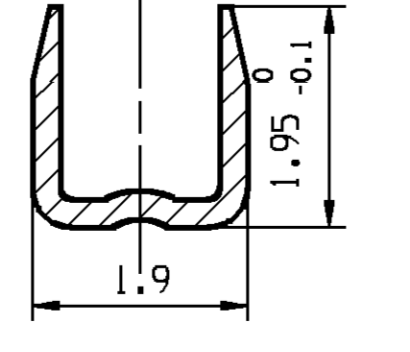
VIEW OF THE CARRIER STRIP IS NOT IN SCALE
ABBILDUNG DES ANBINDUNGS-STREIFENS NICHT MASSSTÄBLICH



PROGRESSION IN THE CRIMP DIE
TRANSPORTRICHTUNG IM CRIMPWERKZEUG



C-C 90°



REMARKS / BEMERKUNGEN

- CRIMP MANUFACTURING PARAMETERS AND TOOLING ACCORDING TO DELPHI-SPECIFICATION
CRIMPVERARBEITUNGSPARAMETER UND WERKZEUGE GEMAESS DELPHI-SPECIFICATION
- SURFACE INDEX: Sn=1 / Ag=11 / Au=111
OBERFLAECHE-KENNZEICHNUNG: Sn=1 / Ag=11 / Au=111
- COMPANY LABEL
FIRMENZEICHEN
- DATECODE: WWYY
DATUMSCODE: WWJJ
- REVISION STATUS OUTSIDE OF ISOCRIMP
REVISIONSSTAND IM AUSSENBEREICH DES ISOCRIMP

UNLESS OTHERWISE SPECIFIED
GENERAL TOLERANCES ACCORDING TO:
SEE CHART
SIEHE TABELLE

GD&T ACCORDING TO:
ISO 1101

REFERENCE

FIRST ANGLE PROJECTION

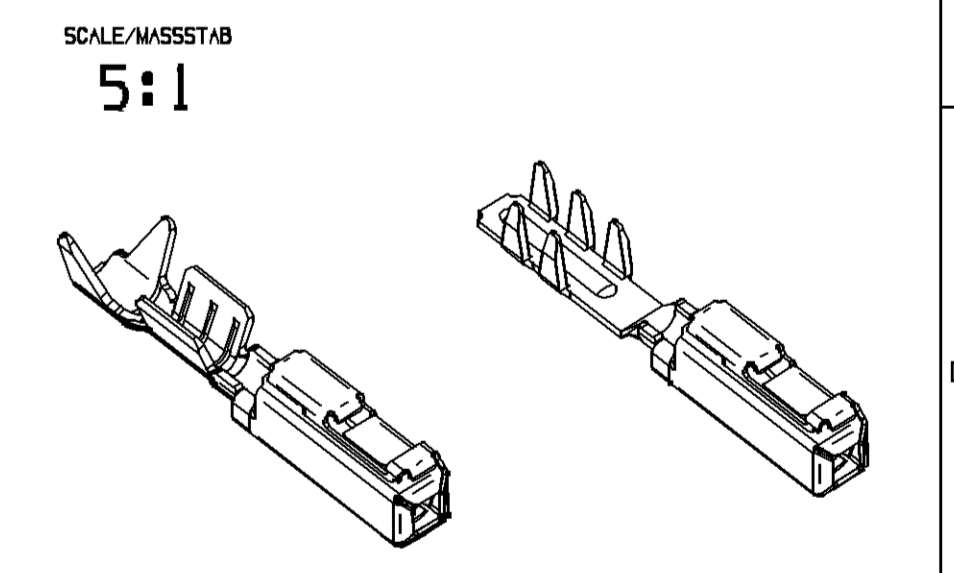
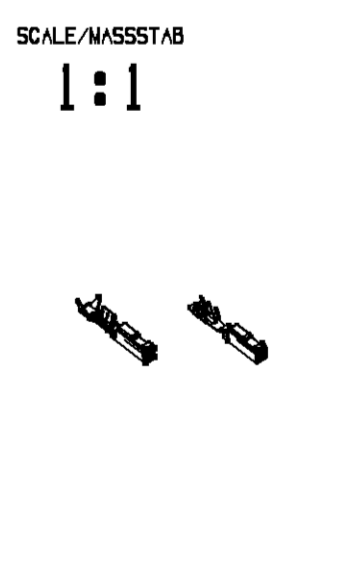
CRIMP MANUFACTURING PARAMETERS AND TOOLING ACCORDING TO DELPHI-SPECIFICATION
CRIMPVERARBEITUNGSPARAMETER UND WERKZEUGE GEMAESS DELPHI-SPECIFICATION

LINE DRAWN THROUGH A PART NUMBER INDICATES THAT PHYSICAL PARTS ARE NOT AVAILABLE FOR ORDERING.
PART NUMBERS THAT DO NOT HAVE A LINE PRESENT INDICATE THAT PHYSICAL PARTS ARE AVAILABLE FOR ORDERING.

CONTACT DELPHI SALES TO ASSURE AVAILABILITY OF PARTS.
FÜR BESTELLUNG VON TEILEN: DELPHI VERKAUFSSERVICE.

CONTACT DELPHI SALES TO ASSURE AVAILABILITY OF PARTS.
FÜR BESTELLUNG VON TEILEN: DELPHI VERKAUFSSERVICE.

CONTACT DELPHI SALES TO ASSURE AVAILABILITY OF PARTS.
FÜR BESTELLUNG VON TEILEN: DELPHI VERKAUFSSERVICE.



DELPHI
DELPHI DEUTSCHLAND GMBH
D-42119 MÜPPERTAL

COPYRIGHT 2003 DELPHI CORPORATION AND/OR ITS AFFILIATES. ALL RIGHTS RESERVED.

THIS DRAWING IS THE PROPERTY OF DELPHI CORPORATION AND CONTAINS DELPHI CONFIDENTIAL INFORMATION. THE REPRODUCTION, DISTRIBUTION AND UTILIZATION OF THIS DOCUMENT OR ITS CONTENTS OR PARTS THEREOF, AS WELL AS COMMUNICATION OF ANY CONTENT TO OTHERS, WITHOUT EXPRESS AUTHORIZATION, IS PROHIBITED.

DESE ZEICHNUNG IST EIGENTUM DER FIRMA DELPHI UND ENTHÄLT DELPHI VERTRAULICHE INFORMATIONEN. DIE REPRODUKTION, VERTEILUNG UND NUTZUNG DIESER DOKUMENTE ODER IHRER EINZELNEN TEILE OHNE AUSDRÜCKLICHE ZULASSUNG VON DELPHI ODER SEINER AFFILIATES IST OHNE BERECHTIGUNG VERBODEN.

DR	M.SACH	DATE
APVD1	E.CVASA	30SE03
APVD2	R.WISNIEWSKI	28JAO4
APVD3		
APVD4		
APVD5		

SUBSTANCE OF CONCERN AND RECYCLED CONTENT PER DELPHI (DOWNDOWN)
POTENTIAL BEFÄHIGUNGSGRADE UND REZYKLIERTER INHALT PRO DELPHI (DOWNDOWN)

MATERIAL: SEE CHART / SIEHE TABELLE

DRAWING NAME: MICRO TERMINAL SYSTEM FEMALE TERMINALBODY BLOCKSEALING
MICRO TERMINAL SYSTEM STECKHUELSE BLOCKDICHTUNG

DRAWING NUMBER: 15426814

SIZE: A0
SCALE: 20:1
FRAME NO: 1
SHEET NO: 1 OF 1
STG: R
REV: D4
TYP: AC

DELPHI

CONTROLLED DOCUMENTS ARE ONLY AVAILABLE ON THE SERVER