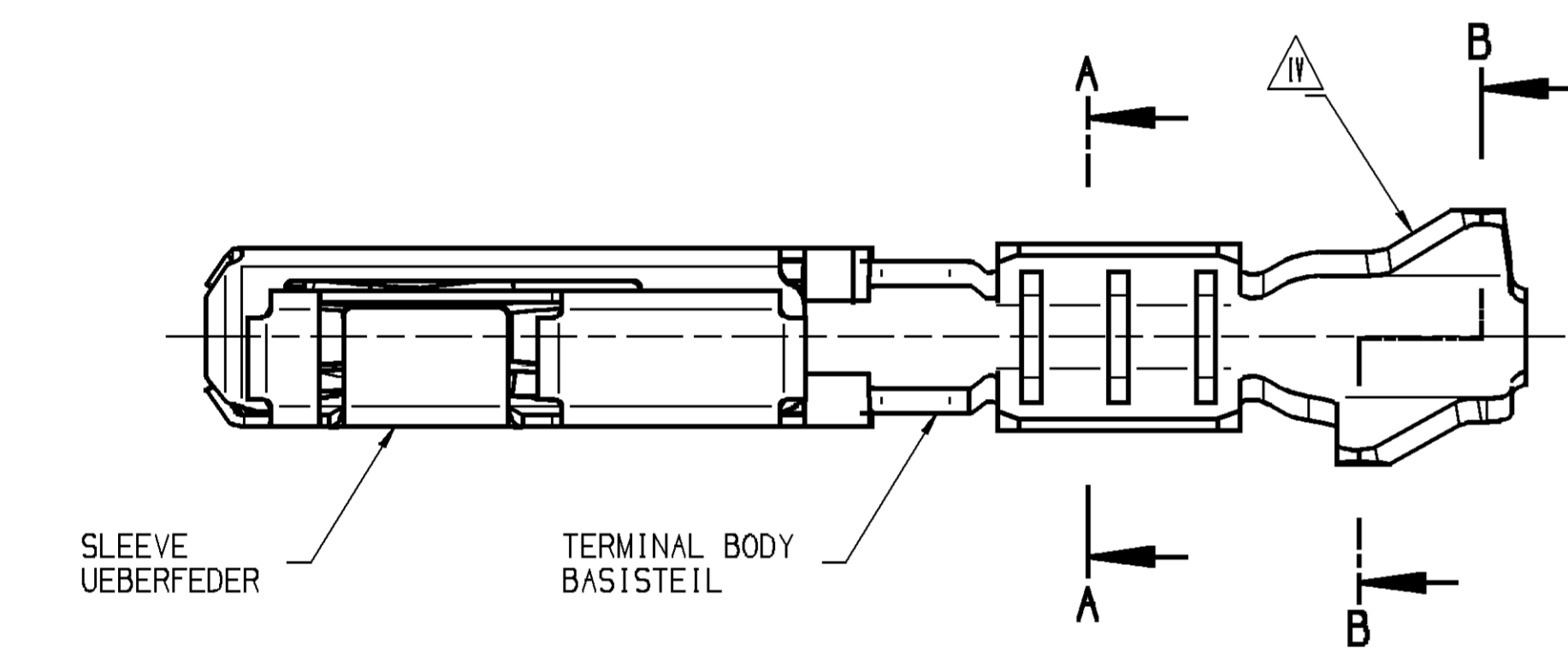
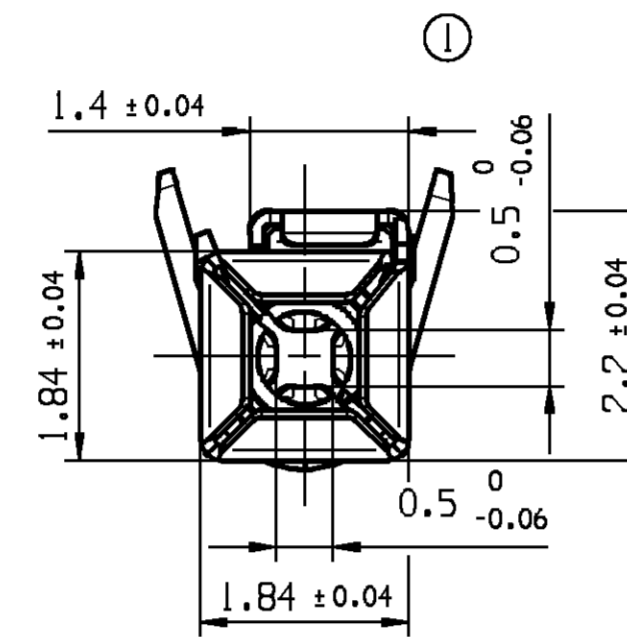
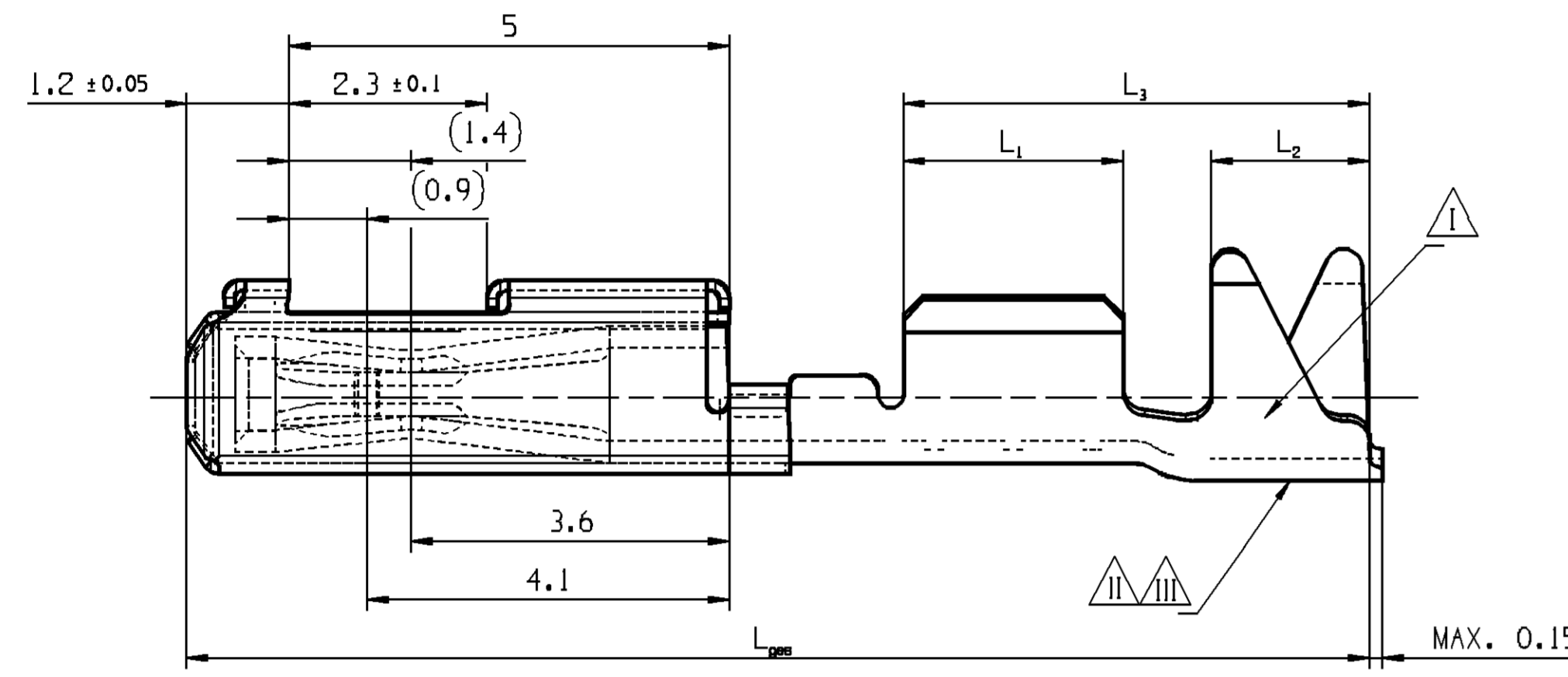


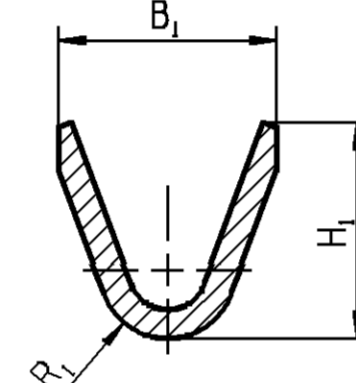
KEY PRODUCT CHARACTERISTICS				
SAFETY/COMPLIANCE	FIT/FUNCTION	TOTAL ON DRAWING	0	
S/C CHECKPOINTS	F/F CHECKPOINTS	LAST NO. USED	0	
NO & TYPE	DESCRIPTION	RATIONALE	PTS	ZONE

L _{max}	L ₁	L ₂	L ₁	R ₁ ±0.1	R ₂ ±0.1	H ₁ ±0.2	H ₂ ±0.2	B ₁ ±0.2	B ₂ ±0.2	PITCH TRANSPORT	SURFACE SLEEVE/UEBERFEDER OBERFLAECHE	MATERIAL SLEEVE/UEBERFEDER WERKSTOFF	MATERIAL BODY/BASISTEIL WERKSTOFF	VERSION AUSFUHRUNG	SURFACE BODY/BASISTEIL OBERFLAECHE	CROSS SECTION QUERSCH.	PART-NO.:	PART-REV	DATE DATUM	DATE STG	REV	PLZ	ZONE	REVISION HISTORY		AUTH	DR	AP/D 1	AP/D 2				
13.50	5.30	1.80	2.50	0.90	0.60	2.64	1.90	2.57	1.93	5.08	BLANK	X10CrNi18 8	CuNi351Mg	BASIC	P,Sn3	0.35-0.50	15426816	01	30SE03	22JUN06	01	AA	J11 D11	H1	INITIAL RELEASE / FREIABGABE		W.SAC	E.CVA	F.WIC				
13.50	5.30	1.80	2.50	0.90	0.80	3.23	2.52	2.82	2.57	10.16	BLANK	X10CrNi18 8	CuNi351Mg			0.60-0.75	15426818	01	30SE03						DIMENSIONS OF CONTACT POINTS ADDED VERMÄSSUNG DER KONTAKTPUNKTE HINZUGEFÜGT		W.SAC	E.CVA	F.WIC				
14.60	6.20	2.00	3.25	1.20	1.00	3.80	3.45	3.75	3.10	10.16	BLANK	X10CrNi18 8	CuNi351Mg			1.00-1.50				12JUN07	02				L5	SURFACE GALVAD ADDED OBERFLAECHE GALVAD HINZUGEFÜGT		W.SAC	E.CVA	M.SKR			
13.50	5.30	1.80	2.50	0.90	0.60	2.64	1.90	2.57	1.93	5.08	BLANK	X10CrNi18 8	CuNi351Mg			0.35-0.50	15426815	01	30SE03						E13	MATERIAL FPC ADDED MATERIAL FPC HINZUGEFÜGT		W.SAC	E.CVA	M.SKR			
14.60	6.20	2.00	3.25	1.20	1.00	3.80	3.45	3.75	3.10	10.16	BLANK	X10CrNi18 8	CuNi351Mg			0.60-0.75	15426817	01	30SE03	19JUN07	03												
13.50	5.30	1.80	2.50	0.90	0.60	2.64	1.90	2.57	1.93	5.08	BLANK	X10CrNi18 8	CuNi351Mg			1.00-1.50									L6	CONTACT MATERIAL IDENTIFICATION MATERIALBEZEICHNUNG ANBRINGEN		W.SAC	E.CVA	M.SKR			
13.50	5.30	1.80	2.50	0.90	0.80	3.23	2.52	2.82	2.57	10.16	BLANK	X10CrNi18 8	CuNi351Mg			0.35-0.50	13627447	01	12JAO7														
14.60	6.20	2.00	3.25	1.20	1.00	3.80	3.45	3.75	3.10	10.16	BLANK	X10CrNi18 8	CuNi351Mg			0.60-0.75	13627448	01	12JAO7	25MR08	03	AA											
14.10	5.75	2.35	1.5	---	---	---	---	---	---	5.08	BLANK	X10CrNi18 8	CuNi351Mg	FPC ①	P,Sn3	---	13653606	01	19JUN07	04JUL08	R	03	AB	H/C9		TOLERANCES ADDED / TOLERANZEN HINZUGEFÜGT		L.WOT	W.SAC	M.SKR			
14.10	5.75	2.35	1.5	---	---	---	---	---	---	5.08	BLANK	X10CrNi18 8	CuNi351Mg		gal-Ag	---	13653608	01	19JUN07						L4	DRAWING ADDED / ZEICHNUNG HINZUGEFÜGT		M.PHI	E.CVA	SYS			
14.10	5.75	2.35	1.5	---	---	---	---	---	---	5.08	BLANK	X10CrNi18 8	CuNi351Mg		P,Sn3	---	13914404	01	21FE13	04JUL13	R	04	AA	L11		DIN 13.50 V15 12.90 / MASS 13.50 V15 12.90		M.PHI	E.CVA	SYS			
13.50	5.10	1.90	2.50	0.90	0.80	3.23	2.15	2.82	2.15	5.08	BLANK	X10CrNi18 8	CuNi351Mg	BASIC	gal-Ag	0.50-0.75	13913309	01	21FE13	09JUN15	R	04	AB	L11		PART IDENTIFICATION REMOVED TEILEBESCHRIFTUNG ENTFERNT		M.PHI	E.CVA	SYS			
																		13914406	01	21FE13	21SE17	R	04	AC	H13		PART IDENTIFICATION ADDED TEILEBESCHRIFTUNG HINZUGEFÜGT		M.PHI	R.BUT	SYS		

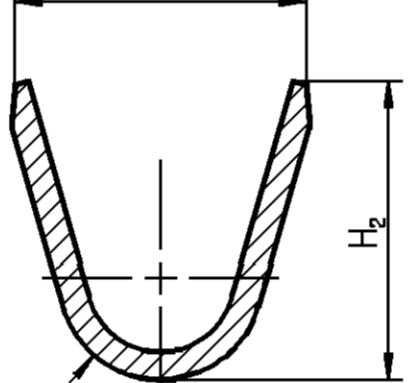
BASIC APPLICATION / STANDARD VARIANTE



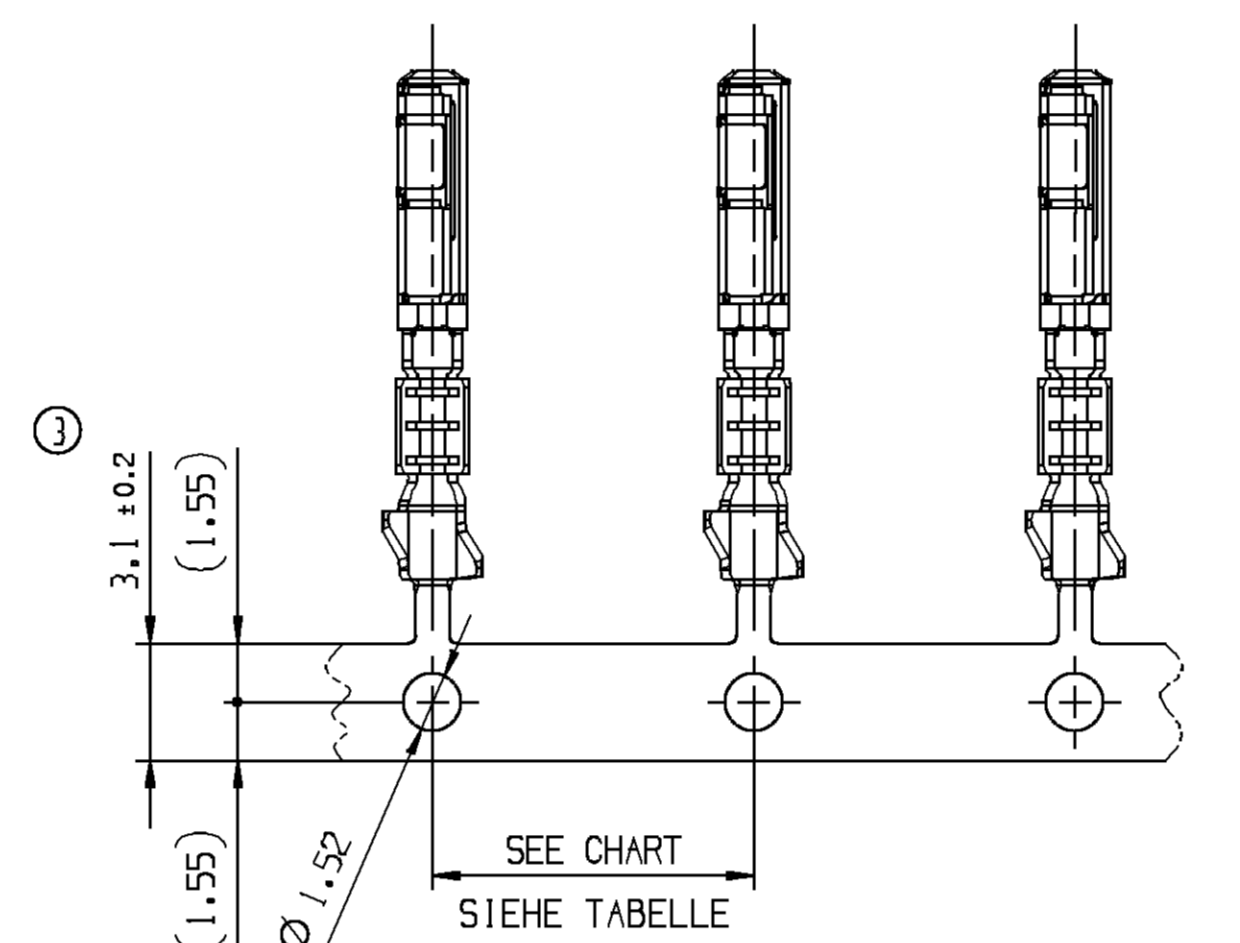
A-A 90°



B-B 90°



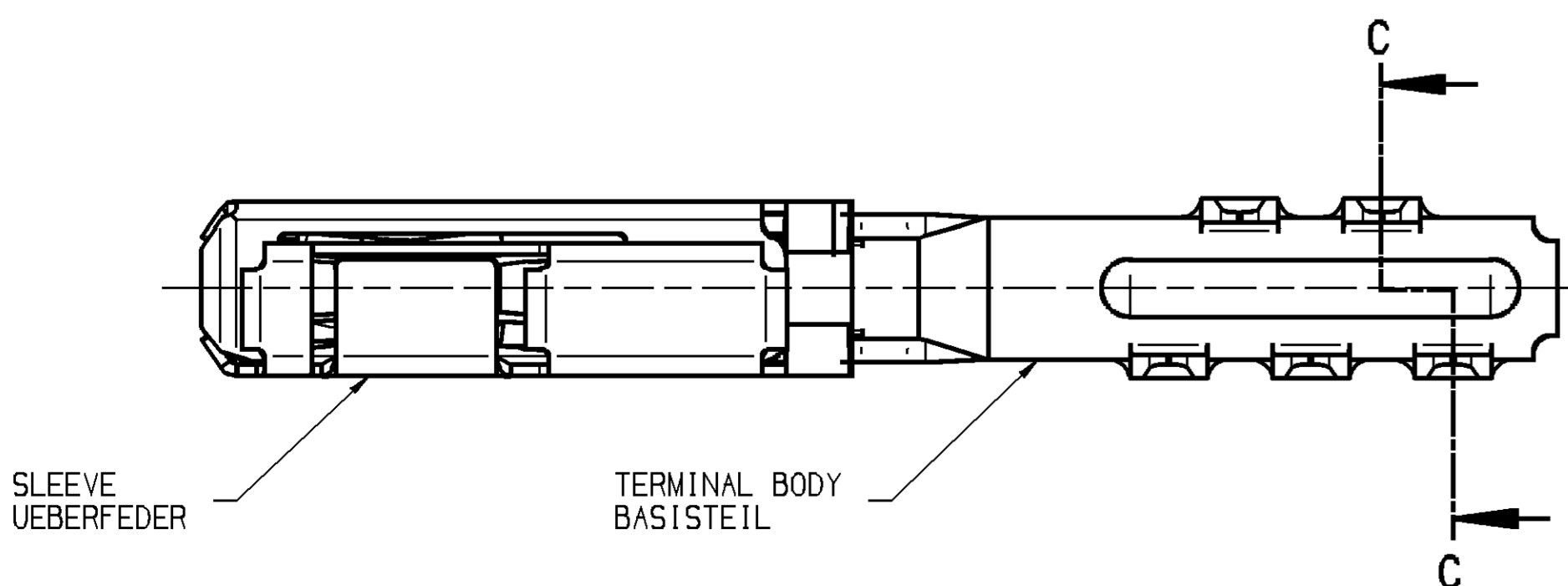
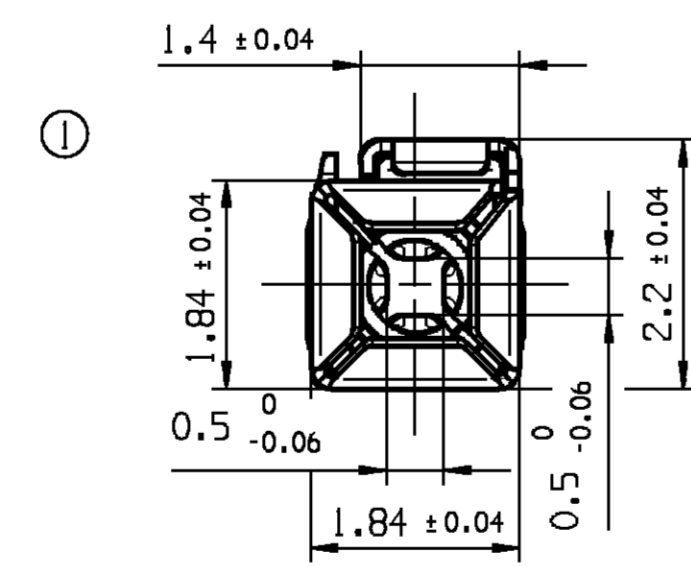
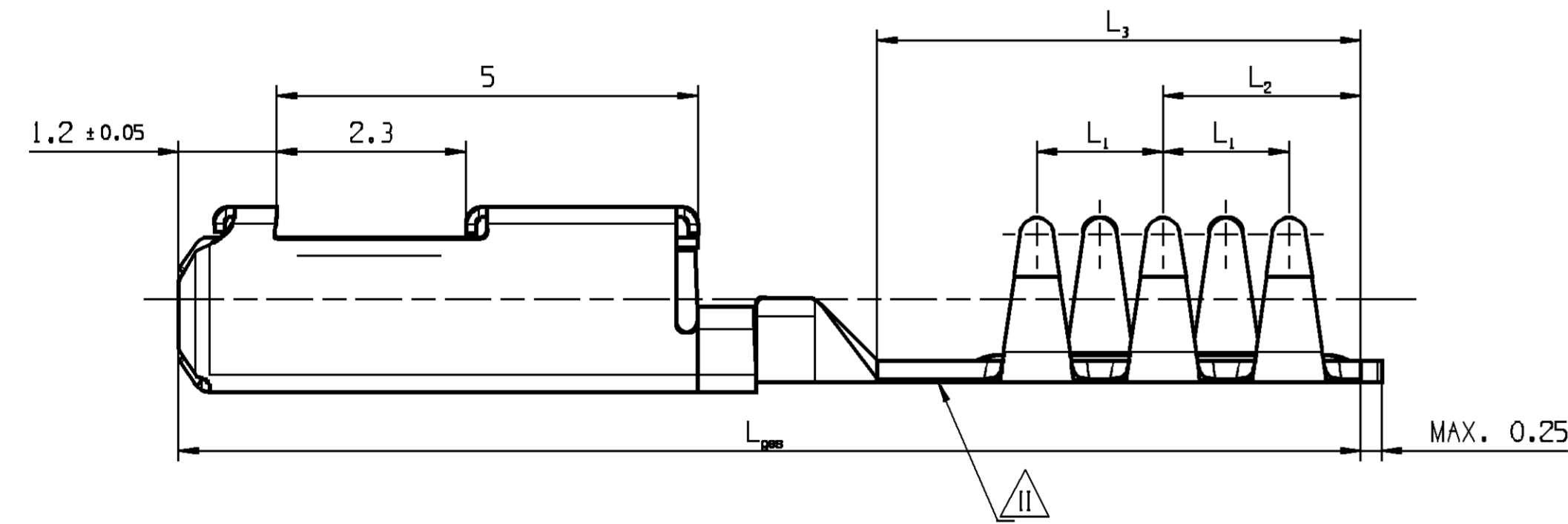
VIEW OF THE CARRIER STRIP IS NOT IN SCALE
ABBILDUNG DES ANBINDUNGS-STREIFENS NICHT MASSTÄBLICH



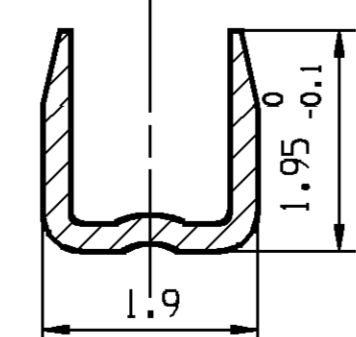
PROGRESSION IN THE CRIMP DIE
TRANSPORTRICHTUNG IM CRIMPWERKZEUG

FLEXIBLE PRINTED CIRCUIT APPLICATION / FPC VARIANTE

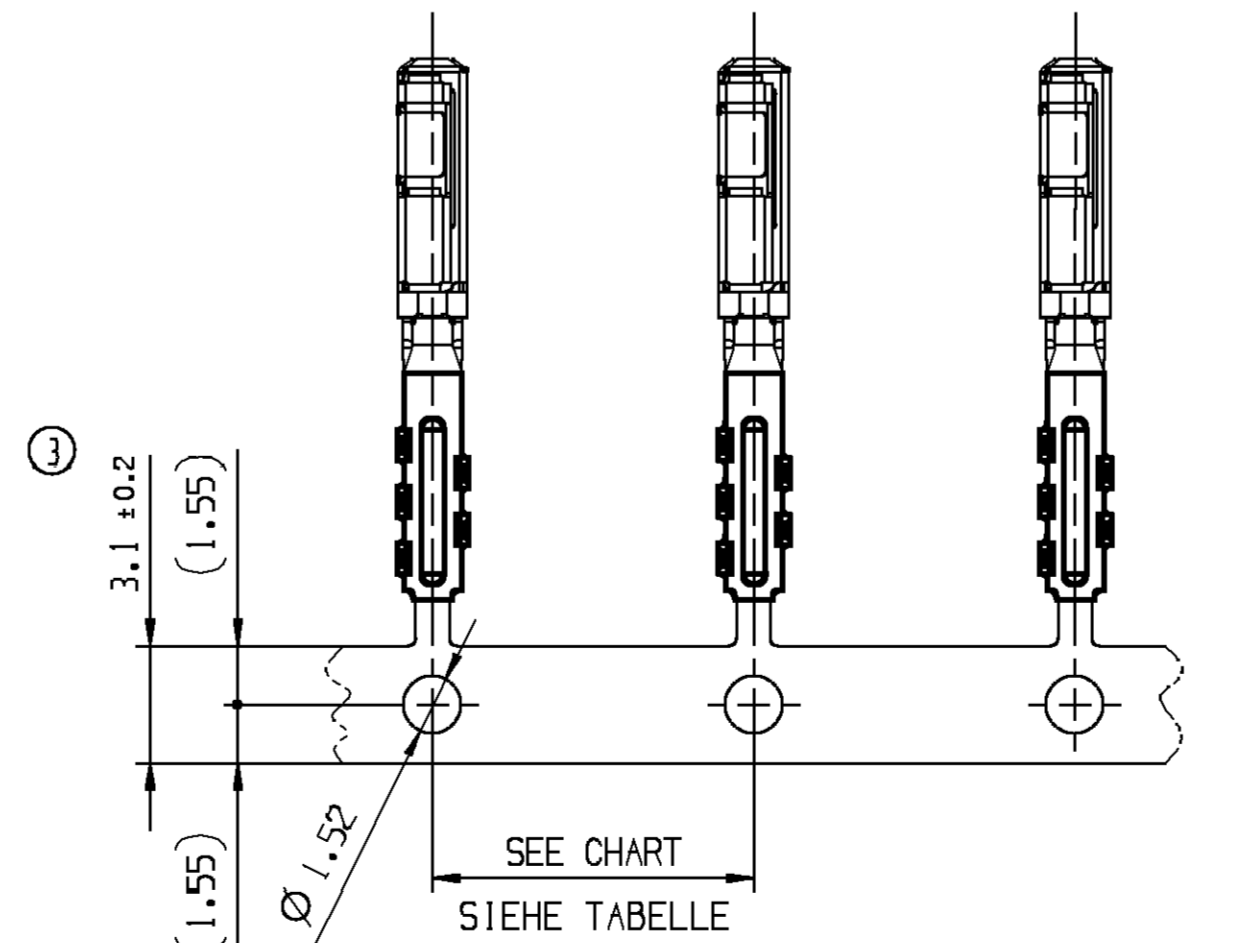
MISSING DIMENSIONS, SEE BASIC APPLICATION
FEHLLENDE MASSE, SIEHE STANDARD VARIANTE



C-C 90°



VIEW OF THE CARRIER STRIP IS NOT IN SCALE
ABBILDUNG DES ANBINDUNGS-STREIFENS NICHT MASSTÄBLICH



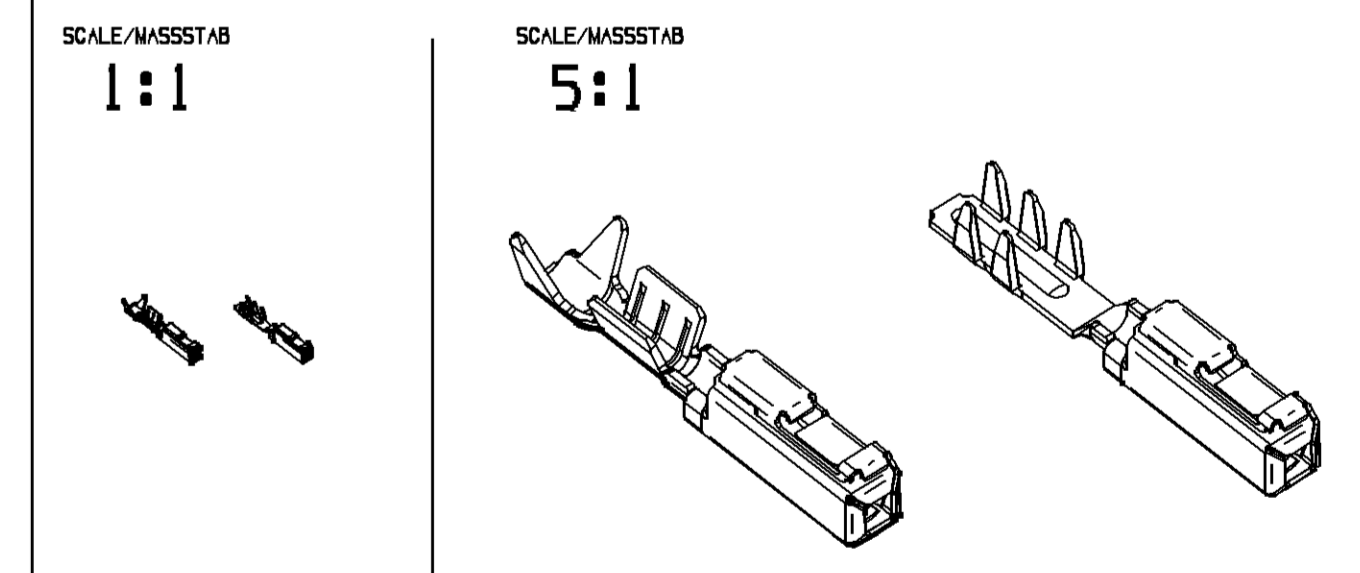
PROGRESSION IN THE CRIMP DIE
TRANSPORTRICHTUNG IM CRIMPWERKZEUG

REMARKS / BEMERKUNGEN

- CRIMP MANUFACTURING PARAMETERS AND TOOLING ACCORDING TO DELPHI-SPECIFICATION
CRIMPVERARBEITUNGSPARAMETER UND WERKZEUGE GEMAESS DELPHI-SPECIFICATION
- SURFACE INDEX: Sn=1 / Ag=11 / Au=111
OBERFLAECHEN-KENNZEICHNUNG: Sn=1 / Ag=11 / Au=111
- COMPANY LABEL
FIRMENZEICHEN
- DATECODE: WWYY
DATUMSCODE: WWJJ
- REVISION STATUS OUTSIDE OF ISOCRIMP
REVISIONSSTATUS IM AUSSENBEREICH DES ISOCRIMP

CRIMP MANUFACTURING PARAMETERS AND TOOLING ACCORDING TO DELPHI-SPECIFICATION
CRIMPVERARBEITUNGSPARAMETER UND WERKZEUGE GEMAESS DELPHI-SPECIFICATION

DIMENSIONAL RANGE (MM) FROM 0 TO >12
TOLERANCE UNLESS OTHERWISE SPECIFIED ALLGEMEINER TOLERANZEN
ANGULAR TOLERANCE ± 2°
WINKELTOLERANZ ± 2°



DELPHI
DELPHI DEUTSCHLAND GMBH
D-42119 MURRARTH
COPYRIGHT 2003 DELPHI CORPORATION AND/OR ITS AFFILIATES. ALL RIGHTS RESERVED.

UNLESS OTHERWISE SPECIFIED		DATE	
DR	M.SACH	29SE03	
AP/D1	E.CVASA	30SE03	
AP/D2	R.WISNIIEWSKI	2BJA04	
AP/D3			
AP/D4			
AP/D5			
SUBSTANCES OF CONCERN AND RECYCLED CONTENT PER DELPHI (DPAW001) POTENTIAL BEWEISLICHE STOFFE UND REZYKLANTEIL GEMÄSS DELPHI (DPAW001)			
MATERIAL		SEE CHART / SIEHE TABELLE	
DRAWING NAME		MICRO TERMINAL SYSTEM FEMALE TERMINALBODY BLOCKSEALING	
DRAWING NUMBER		15426814	
SIZE A0	SCALE 20:1	FRAME NO 1	SHEET NO 1 OF 1
		STB R	REV D4 AC

DELPHI

CONTROLLED DOCUMENTS ARE ONLY AVAILABLE ON THE SERVER