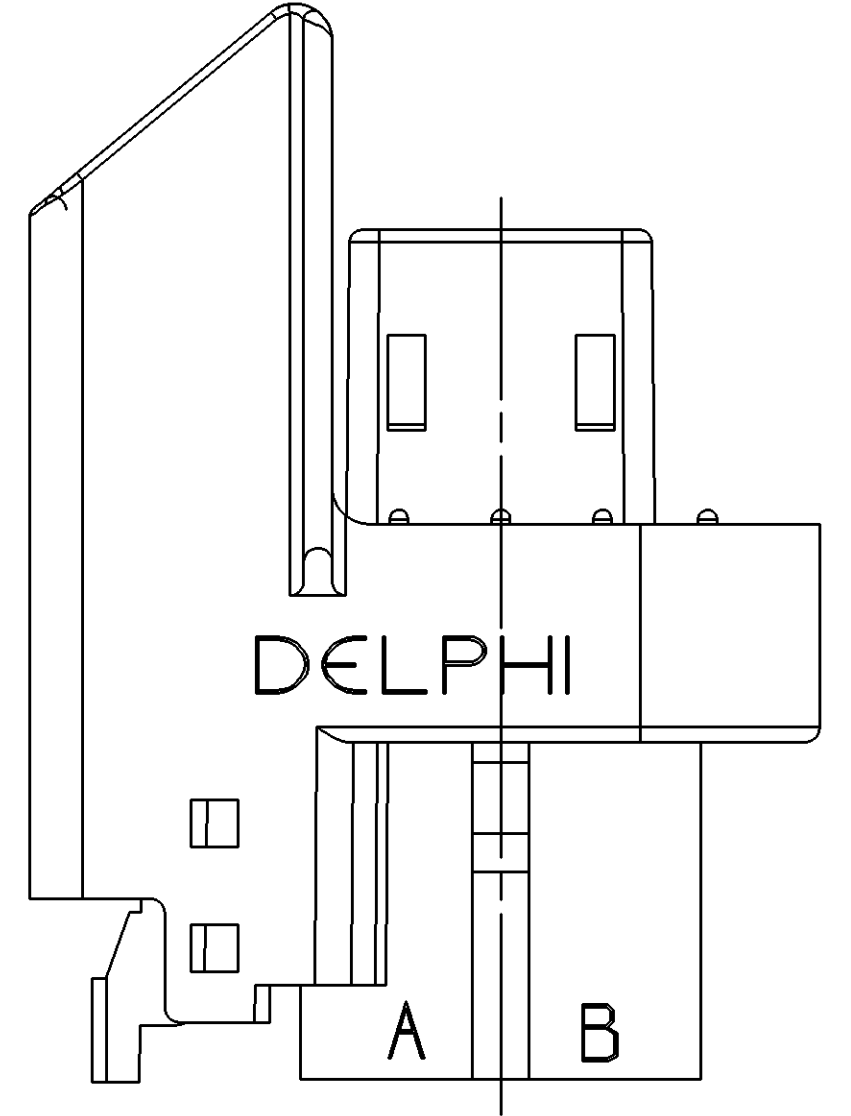
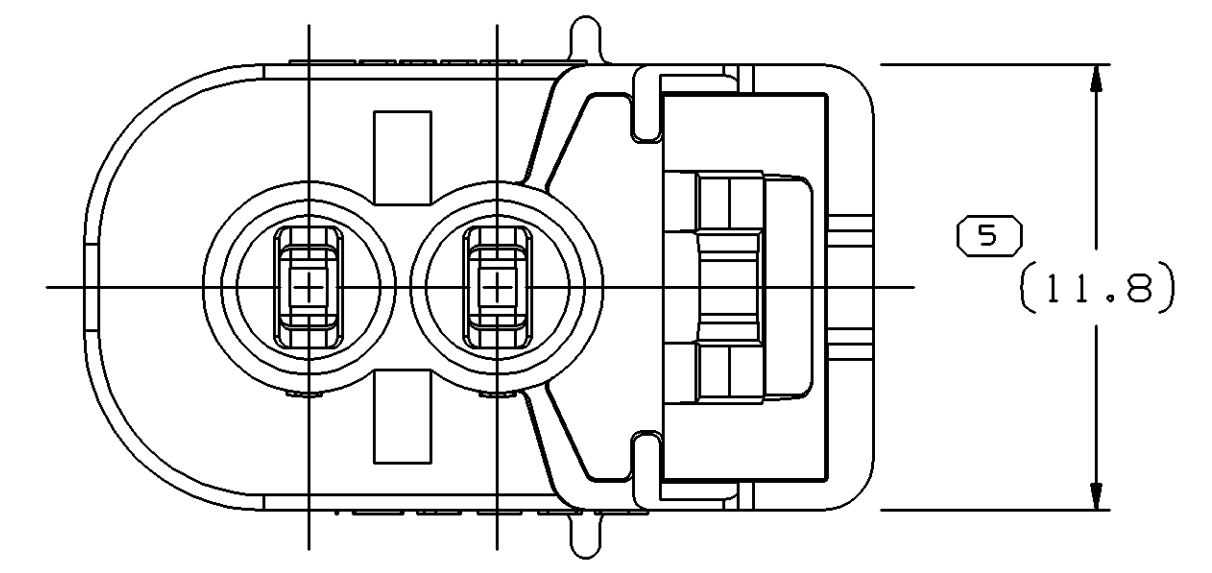
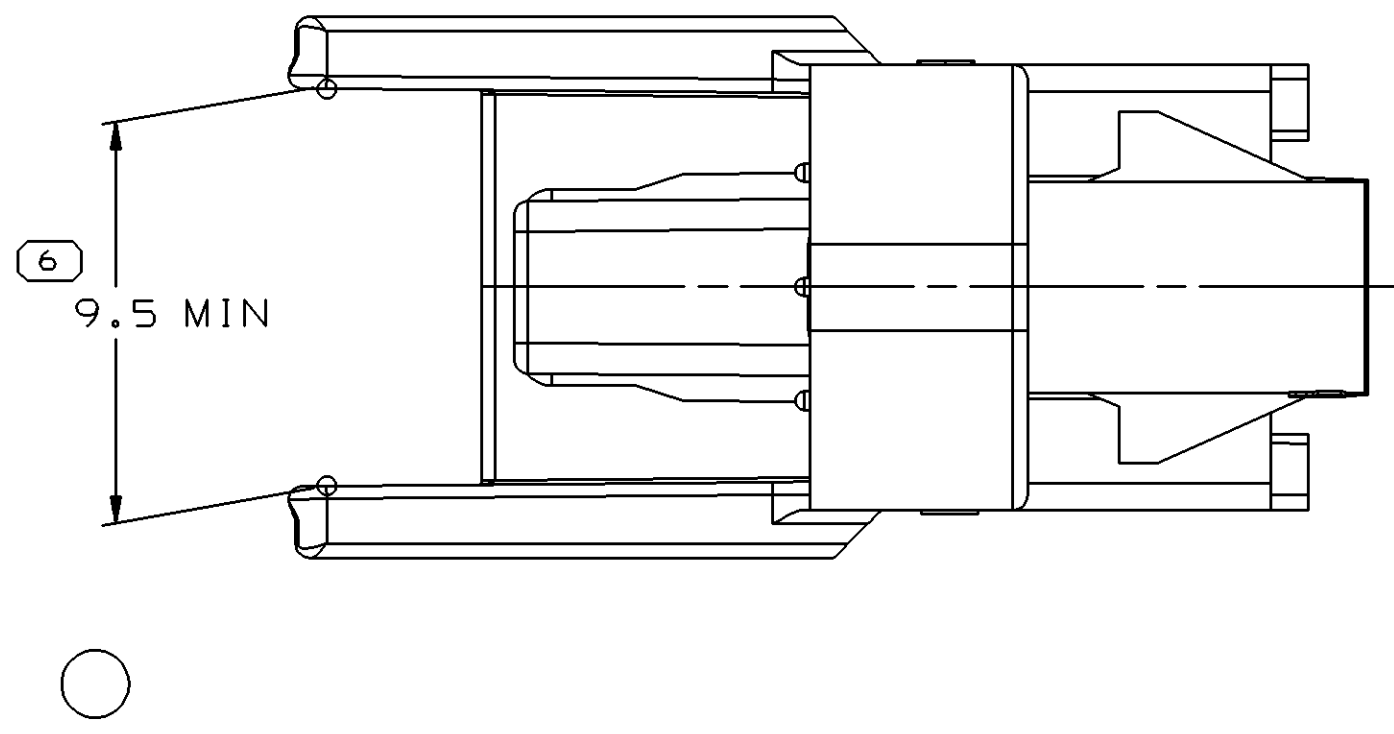
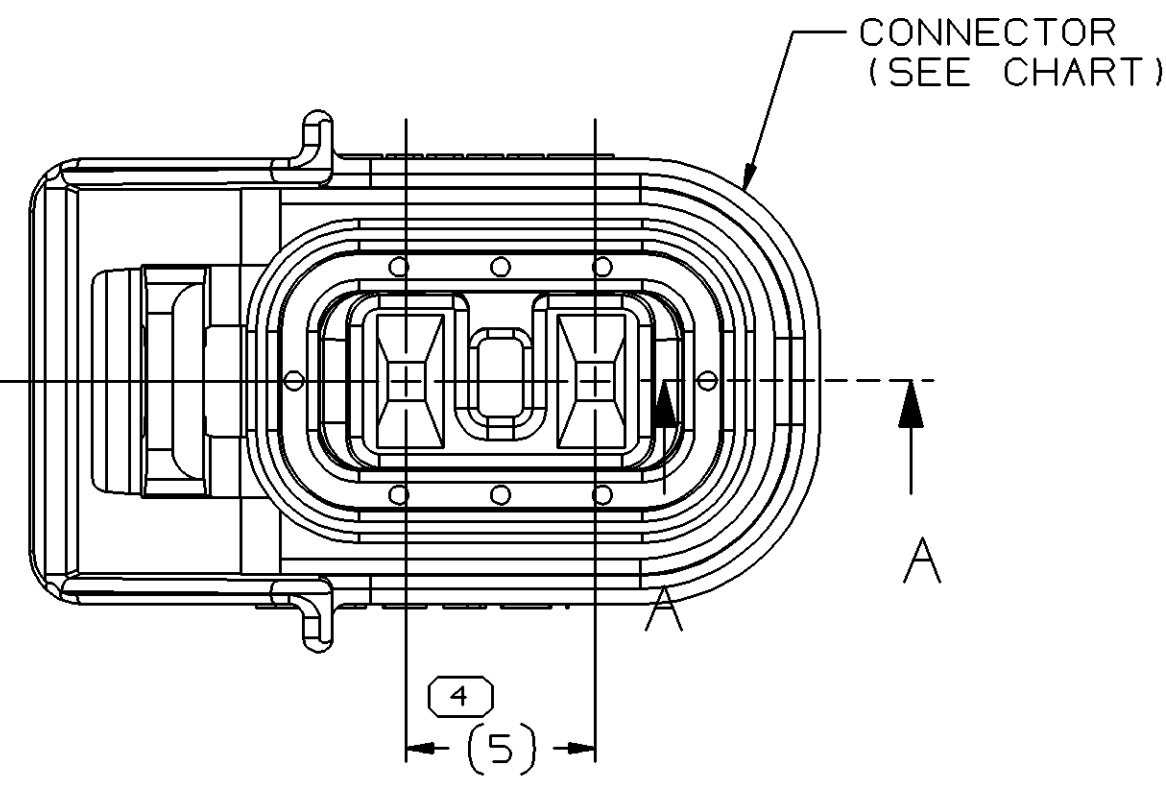
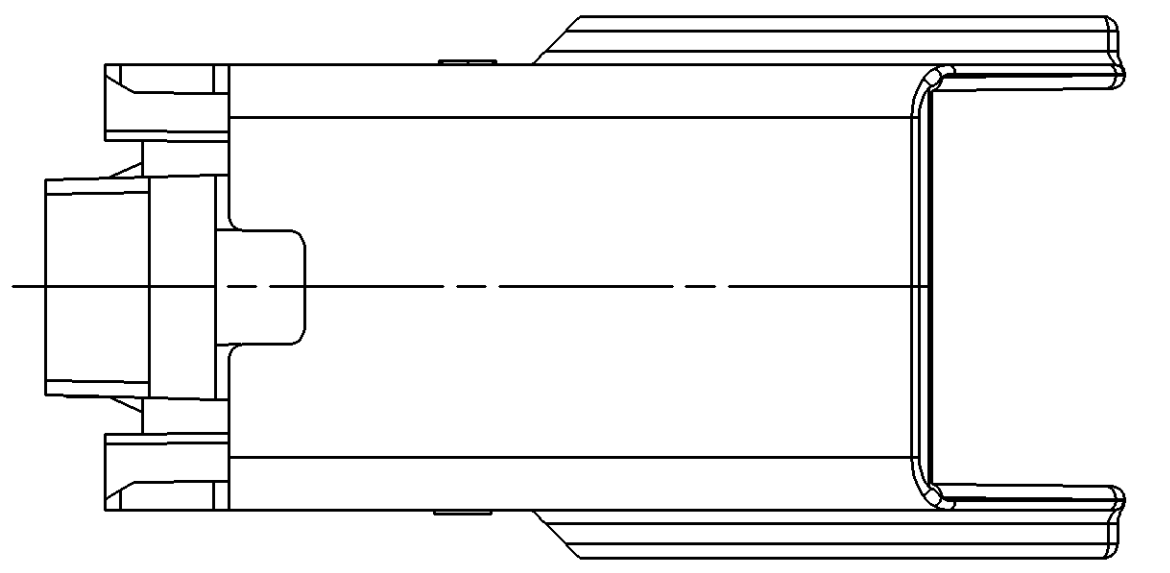
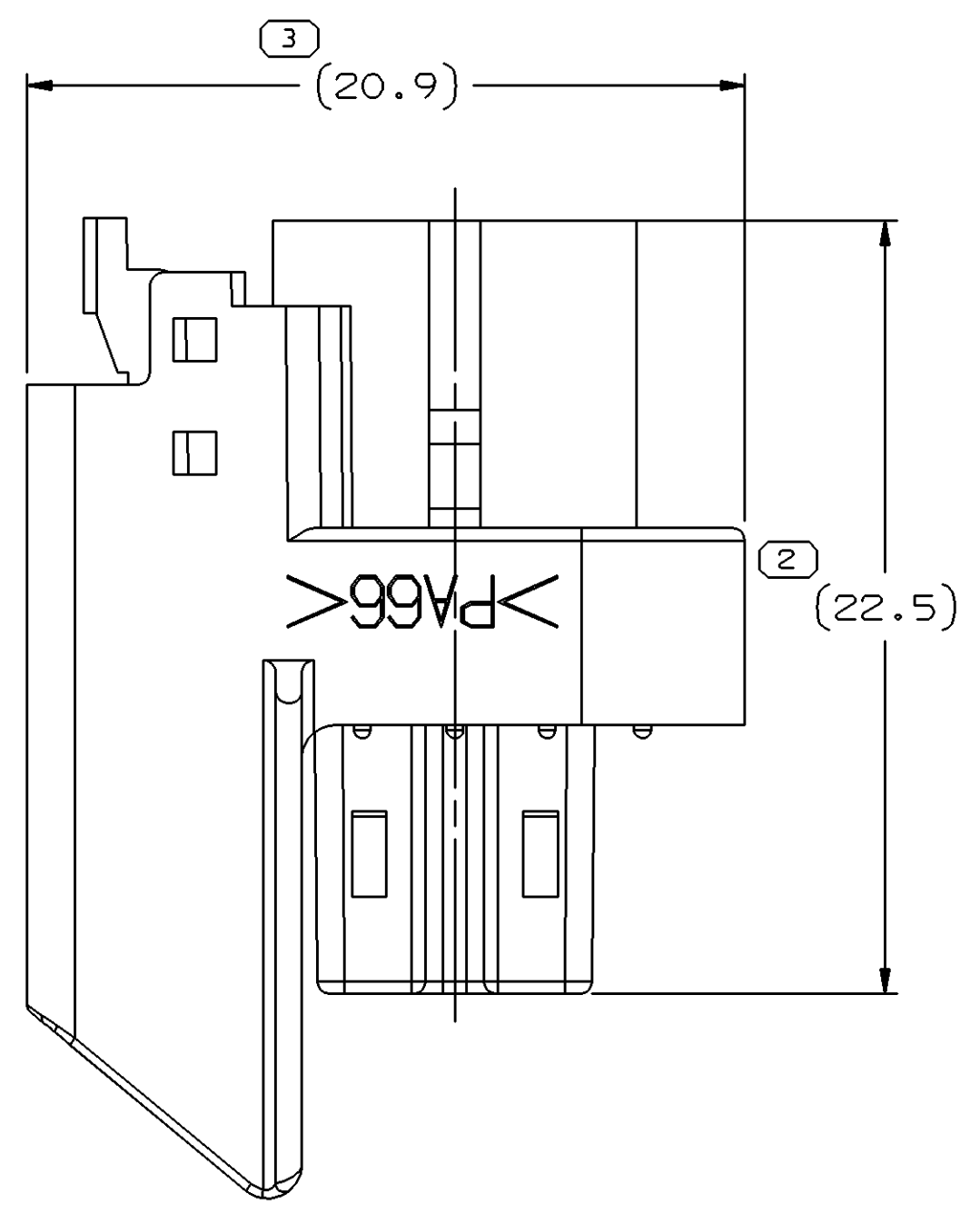


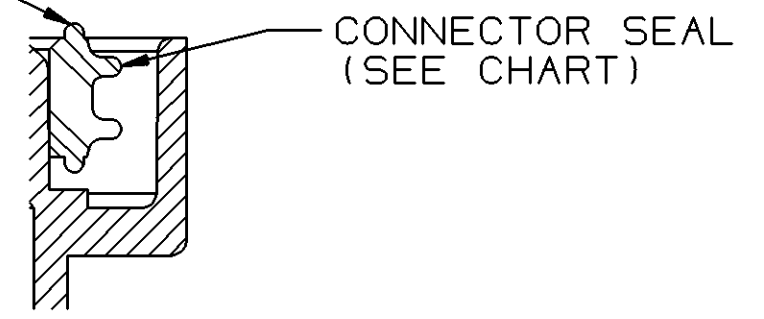
SYMBOL DEFINITION		MISSING SYMBOLS	
A DIMENSION WITHOUT AN INSPECTION REPORT SYMBOL DOES NOT REQUIRE INSPECTION. IT MAY BE CONTROLLED ON THE INDIVIDUAL COMPONENT DRAWING.	TOTAL NO OF INSPECTIONS REQUIRED	NO MISSING SYMBOL NUMBER	
	6		
	LAST NO. USED		
	6		

DWO STATUS					REVISION HISTORY			AUTH	DR	APVD
DATE	STG	REV	N/P	CHG	ZONE					
03DE02	R	01	-	-		WAS PE115926, REVISED AND RELEASED	233890	EES	EES	RF
20AU03	R	01	AA	-		ADDED 9.5 MIN DIMENSION	244694	BRB	BRB	RF



- NOTES
- UNLESS OTHERWISE SPECIFIED AND/OR INDICATED: DIMENSIONS ARE TO FACE OF VIEW SHOWN AND AUTOMATICALLY ROUNDED BY COMPUTER FOR INSPECTION (SEE MATH MODEL FOR PRECISE DIMENSIONS). FOR ALL OTHER DIMENSIONS NOT SHOWN BUT REQUIRED FOR TOOL BUILD, SEE MATH MODEL FOR PRECISE TOOL PATH DATA.
 - SEALING CODE 3 - DESIGN WILL PASS SALT FOG AND IMMERSION TEST AFTER CONDITIONING AS SPECIFIED IN ESA-644 (WEATHER-PACK), ESA-710 (METRI-PACK), ESA-650 (UNDERHOOD MICRO-PACK), C-4006 (WORLD CONNECTOR), ETC WHEN MATED TO MATING PART OR EQUIVALENT
 - THIS PART IS NOT CONTROLLED FOR AUTOMATIC FEEDING.
 - MATING COMPONENTS OR EQUIVALENT: CUSTOMER PART-DELPHI E MULTEC 2 FUEL INJECTOR
 - THIS PART ACCEPTS THE FOLLOWING COMPONENTS OR EQUIVALENT: TERMINAL 15305174, SECONDARY TERMINAL LOCK 15305083, CONNECTOR POSITION ASSURANCE LOCK 15326096, CONNECTOR SEAL 15305081, CABLE SEAL 12191226
 - FOR MATING CONFIGURATION REQUIREMENTS SEE DRAWING 15336466
 - REFER TO VISUAL PRODUCT STANDARD #C-74 OR #C-86 FOR ASSEMBLY OF CONNECTOR POSITION ASSURANCE LOCK TO CONNECTOR ASSEMBLY.
 - CONNECTION SYSTEM DESIGNED FOR RMS STACKUP

CONNECTOR SEAL TO BE SEATED ON CONNECTOR BODY SUCH THAT NO MORE THAN THE ANTISTICK BUMPS OF THE SEAL ARE VISIBLE ABOVE THE OUTER SHROUD OF THE CONNECTOR BODY WHEN VIEWED FROM THE SIDE



SECTION A - A

PART DRAWING	
STYLE	
VOLUME (CM ³)	DISTR CODE
ROUTING	6900
UNLESS OTHERWISE SPECIFIED	
THIS DOCUMENT IS IN ACCORDANCE WITH ASME Y14.5M-1994 AS AMENDED BY THE 2003 DIMENSIONING AND TOLERANCING ADDENDUM - 1997. ALL GEOMETRIC TOLERANCES AND RELATED DATUMS APPLY TO ALL DIMENSIONS UNLESS OTHERWISE SPECIFIED.	
MFG DOES NOT APPLY WHEN RELATIONSHIP BETWEEN FEATURES IS ESTABLISHED BY ORIENTATION OR LOCATION TOLERANCES, REGARDLESS OF DATUM REFERENCE.	
SEPARATE POSITION DIALINDS MAY BE OBTAINED SEPARATELY. ALL DIMENSIONS ARE IN MILLIMETERS.	
REFERENCE	

DELPHI
DELPHI PACKARD ELECTRIC SYSTEMS
WARREN, OH

DR	DATE
APVD1 E. SEIDEL	02DE02
APVD2 E. SEIDEL	03DE02
APVD3 RICK FETCENKO	03DE02
APVD4	
APVD5	

SUBSTANCES OF CONCERN AND RECYCLED CONTENT PER DELPHI 10949001

MATERIAL SEC CHART

DRAWING NAME
ASM CONN 2 F MIC/P 064 GRA MD SLD

DRAWING NUMBER
15450634

SIZE AO SCALE 5:1 FRAME NO 1 OF 1 SHEET NO 1 OF 1 STG REV N/P R 01 AA

15450634	01	AA	-	15305081	15450541	PA66-HS IM-GRA MD
P/N CONN ASSY	REV N/P	STATUS	CONN SEAL	CONNECTOR	CONNECTOR MATL	

DIMENSIONAL RANGE (MM)		TOLERANCE UNLESS OTHERWISE SPECIFIED	
FROM	TO	TOLERANCE	ANGULAR TOLERANCE
> 0	> 20	±0.15	±0.2°
> 20	> 30	±0.2	±0.3°
> 30	> 70	±0.3	±0.4°
> 70	> 100	±0.4	±0.5°
> 100	> 150	±0.5	±0.6°
> 150	> 200	±0.6	±0.8°
> 200	> 250	±0.8	±1°
> 250	> 300	±1	±1.2°
> 300	> 400	±1.2	±1.5°