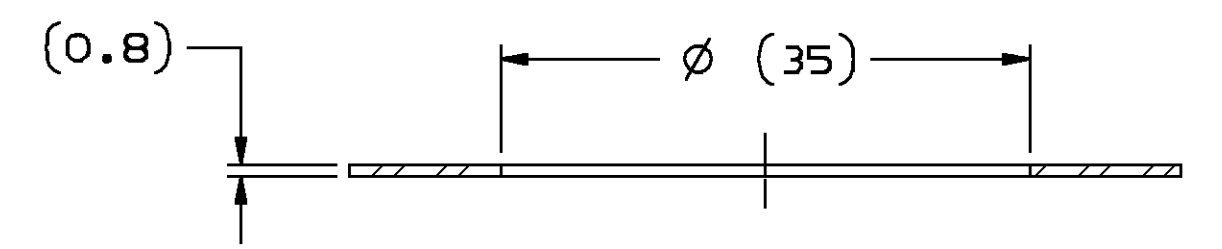
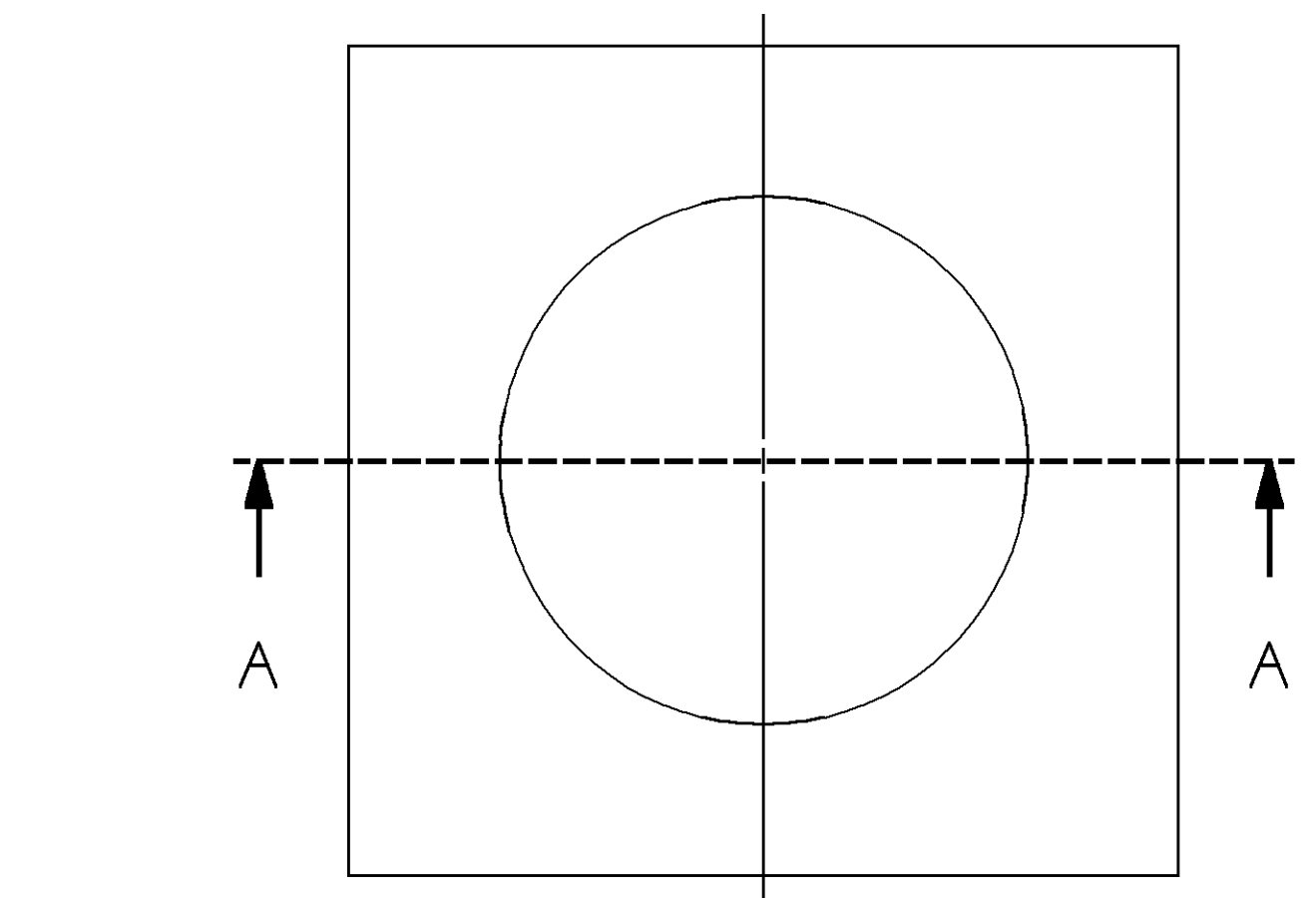
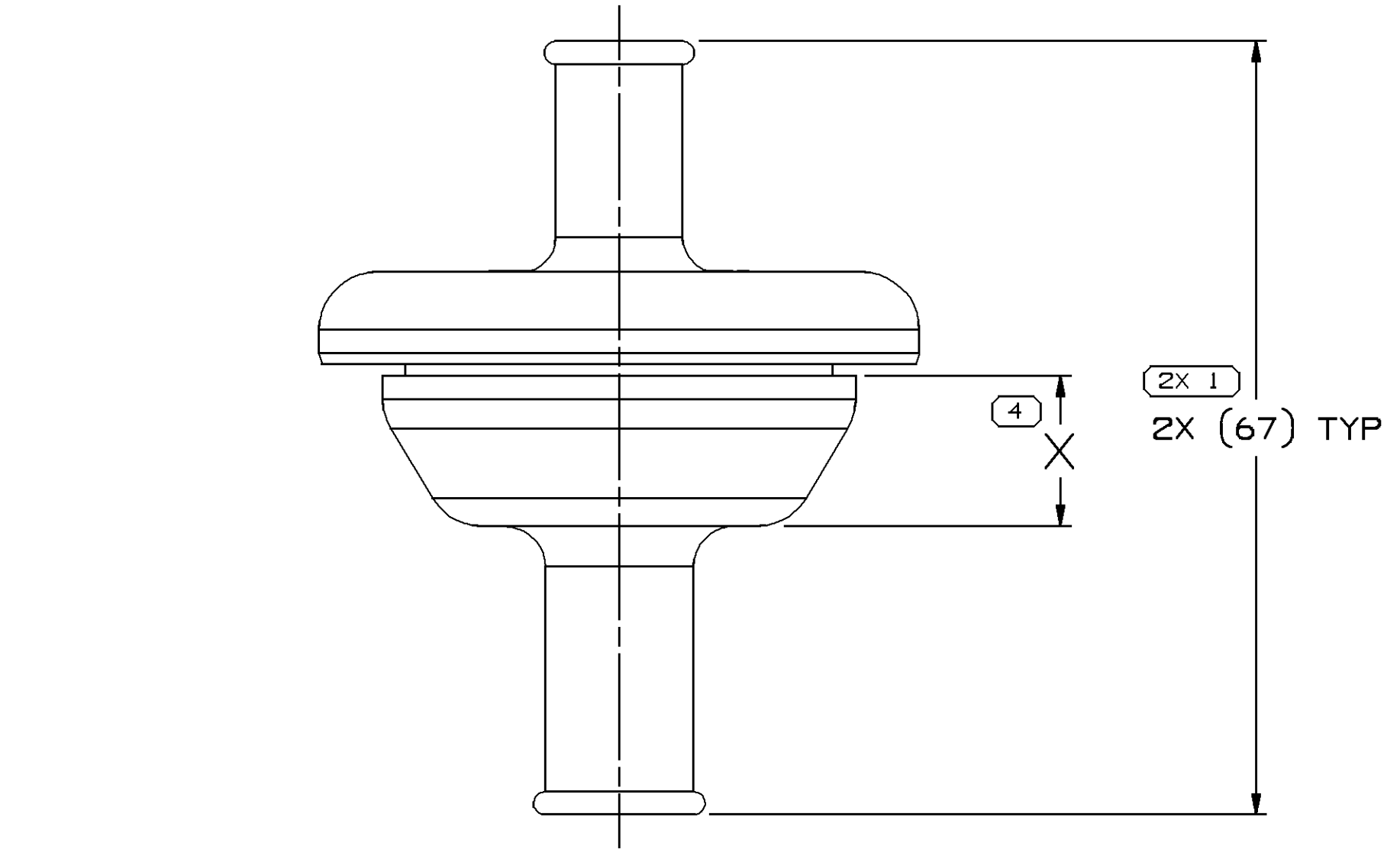
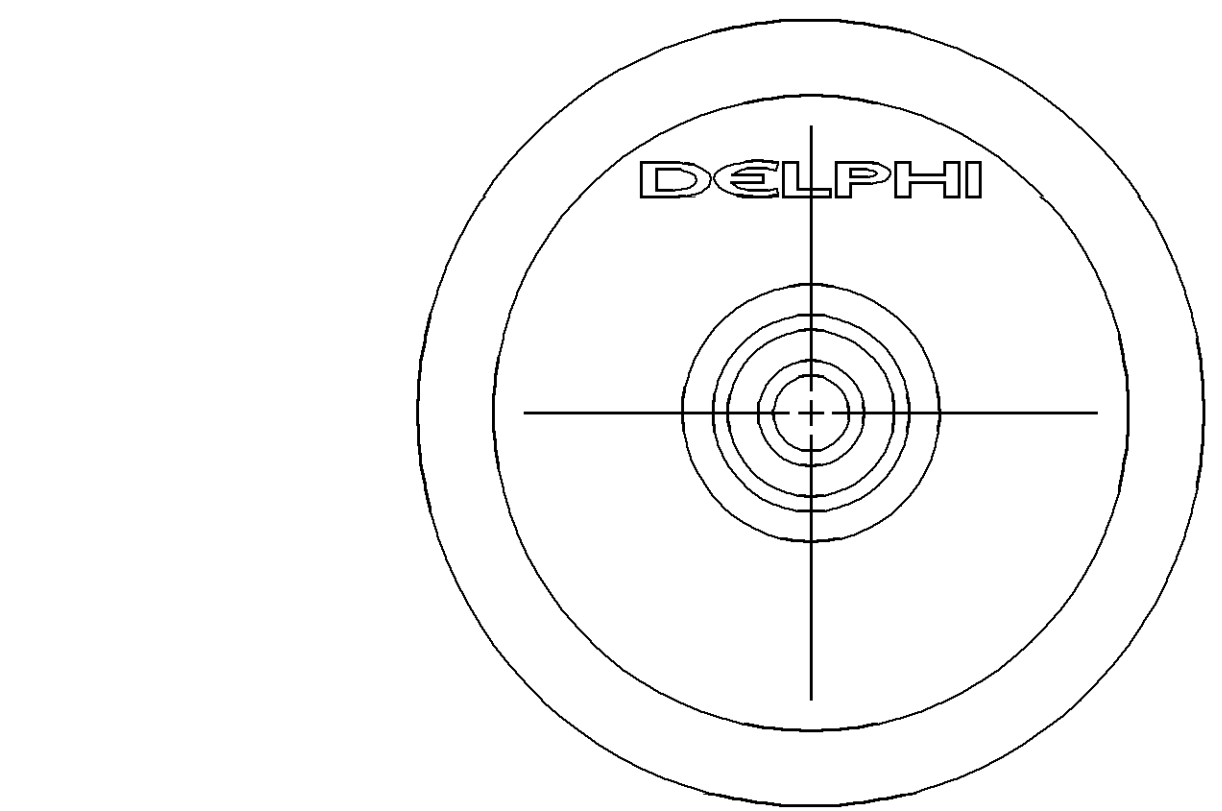


12 11 10 9



SECTION A-A  
MOUNTING HOLE DETAIL



12 11 10 9

8 7 6 5 4 3 2 1

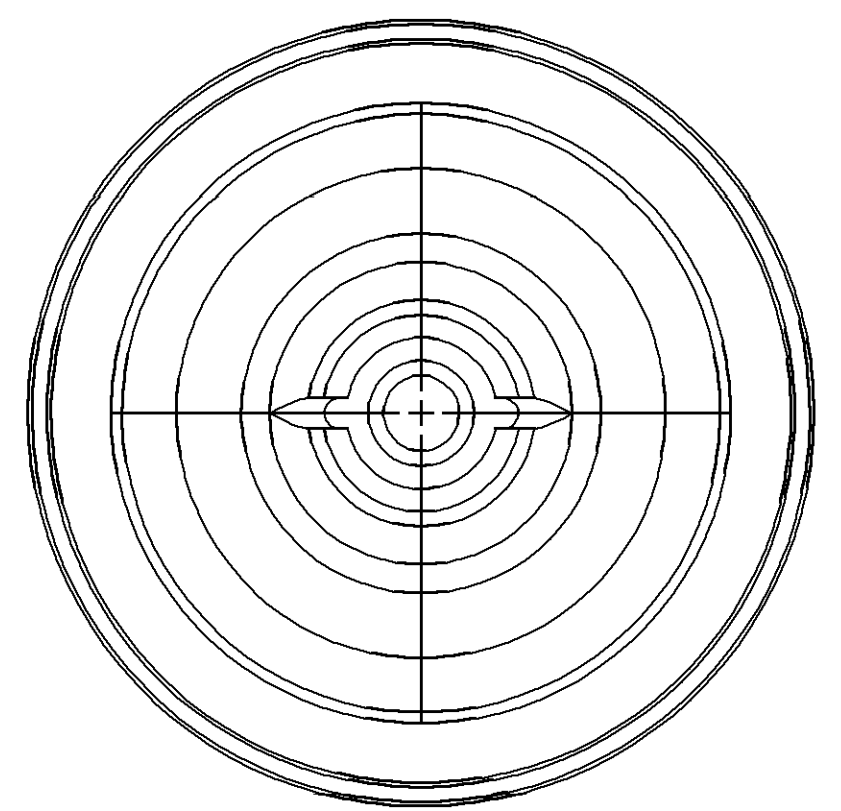
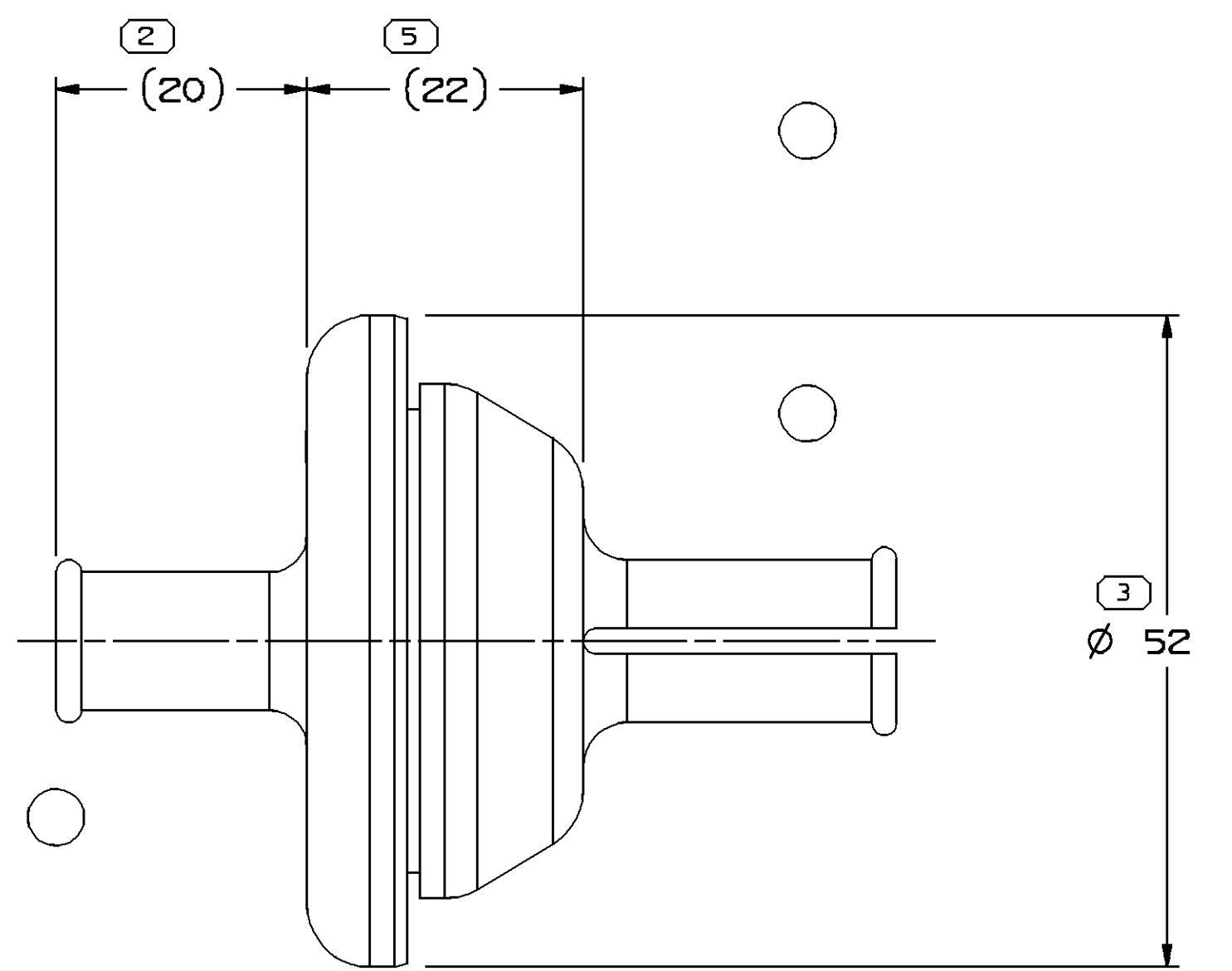
SYMBOL DEFINITION

A DIMENSION WITHOUT AN INSPECTION REPORT SYMBOL DOES NOT REQUIRE INSPECTION. IT MAY BE CONTROLLED ON THE INDIVIDUAL COMPONENT DRAWING.	TOTAL NO OF INSPECTIONS REQUIRED	6
	LAST NO. USED	5

MISSING SYMBOLS

NO MISSING SYMBOL NUMBER
--------------------------

DWG STATUS				ZONE	REVISION HISTORY	AUTH	DR	APVD1	APVD2
DATE	STG	REV	N/P						
17JL03	R	01	-	-	WAS PE117041 AND RELEASED	243542	ECB	AUG	JS
06AU03	R	02	-	-	REVISED GRAPHICS	244279	FRG	FRG	MAZ
21FE05	R	02	AA	-	ADDED PROCESS NOTE 3	264750	ESH	JVM	WLM
04JL05	R	02	AB	-	UPDATED PDM ATTRIBUTES	269877	JBD	FRG	JS
26JL06	R	02	AC	-	ADDED NO LUBE NOTE (3 PLCS)	283026	JS	JS	JS
29SE06	R	02	AD	-	REMOVED "NO LUBE" CALLOUTS (3 PLCS) AND PROCESS NOTE #2	285045	EES	EES	JS

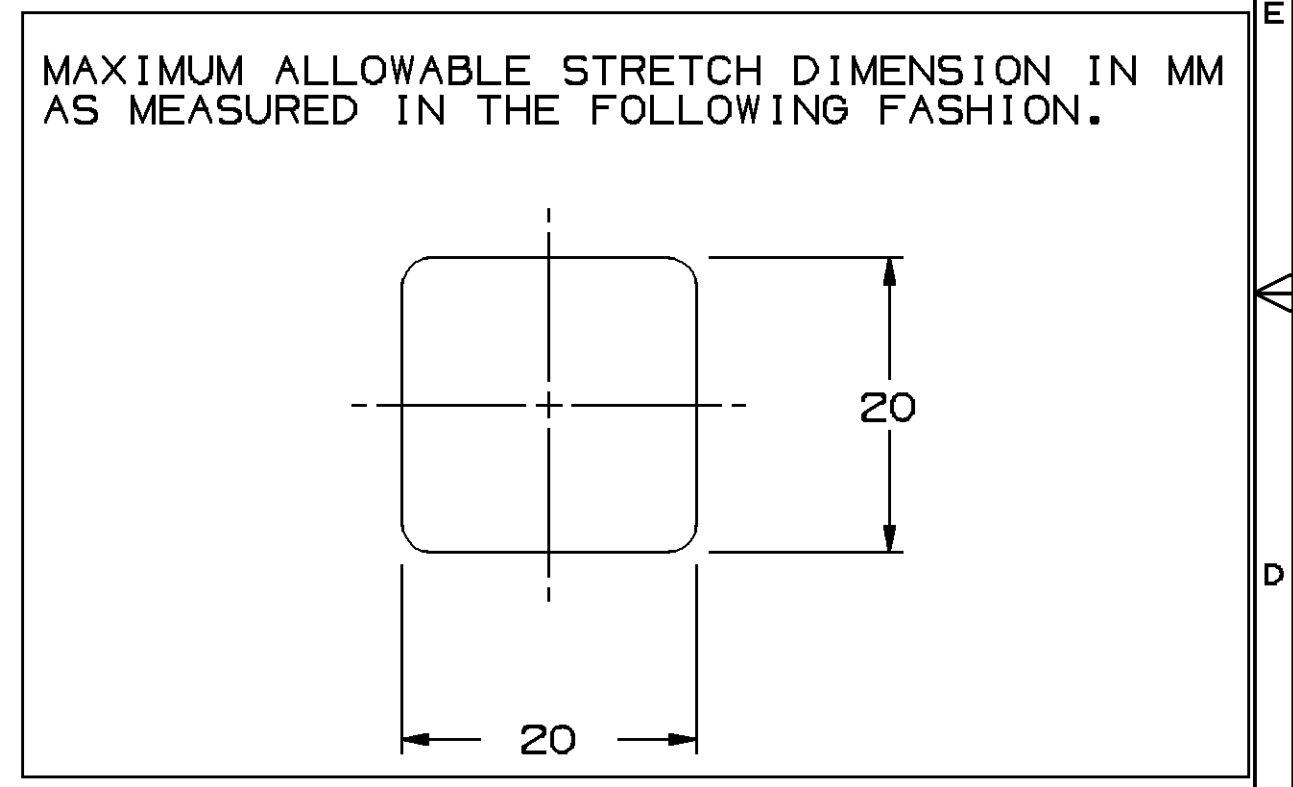


NOTES

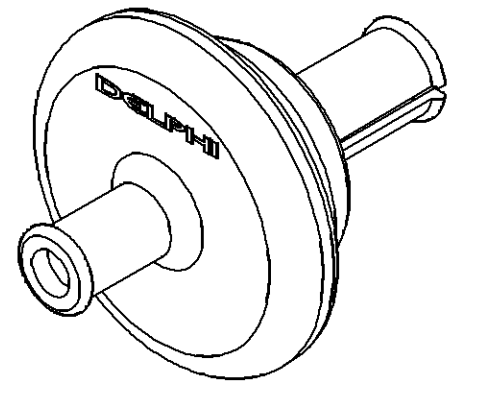
- UNLESS OTHERWISE SPECIFIED AND/OR INDICATED: DIMENSIONS ARE TO FACE OF VIEW SHOWN AND AUTOMATICALLY ROUNDED BY COMPUTER FOR INSPECTION (SEE MATH MODEL FOR PRECISE DIMENSIONS). FOR ALL OTHER DIMENSIONS NOT SHOWN BUT REQUIRED FOR TOOL BUILD, SEE MATH MODEL FOR PRECISE TOOL PATH DATA.
- THIS PART IS NOT CONTROLLED FOR AUTOMATIC FEEDING.
- PART IS SYMMETRICAL ABOUT CENTERLINES EXCEPT AS NOTED.
- SEALING SURFACES MUST BE FREE OF SINKS, NFO'S, VOIDS, KNIT/FLOW LINES, ETC.
- (2.3)X(0.1) DELPHI CORPORATE BRAND TO BE LOCATED ON ANY EXTERIOR SURFACE, PREFERABLY VISIBLE AT FINAL ASSEMBLY. OPTIONAL CONSTRUCTION TO BE "PED" OR NO LOGO.
- THIS GROMMET TO BE USED WITH HARNESS BUNDLE SMOOTH TAPE WRAPPED USING 5 MIL TAPE HAVING NO SLITS ON EDGES.

PROCESS NOTES

- APPLY UNIFORM COATING OF "EASE OUT 499F" LUBRICANT TO AREA MARKED "X". LUBE MUST BE APPLIED BY BRUSH AND AT FULL STRENGTH FOR BEST RESULTS. MIXING IS RECOMMENDED EVERY 15 MINUTES TO PREVENT SETTLING. COATED PARTS MUST BE THOROUGHLY DRY PRIOR TO PACK OUT.
- THE FOLLOWING NUMBER IS TO BE PUT ON THE PRODUCT DRAWING AS THE MAXIMUM ALLOWABLE STRETCH DIMENSION: 20MM AS MEASURED IN THE FOLLOWING FASHION:



MAXIMUM ALLOWABLE DIMENSION OF STRETCHED GROMMET NECK WHEN USING A 4 BILL SPREADER



(3) PROCESS SENSITIVE DIMENSION					
DIMENSIONS ENCLOSED IN ( ) INDICATE REFERENCE DIMENSIONS AND NO TOLERANCE LIMITS ARE ESTABLISHED					
DIMENSIONAL RANGE (MM)	CHART	C			
FROM	>0	>25	>60	>80	>80
TO	25	60	80	80	80
TOLERANCE UNLESS OTHERWISE SPECIFIED	±0.3	±0.5	±0.6	±0.75%	
ANGULAR TOLERANCE	±2*				

DWG TYPE PART DRAWING	
STYLE	
VOLUME (CIP) 17.948	DISTR CODE D
UNLESS OTHERWISE SPECIFIED THIS DOCUMENT IS IN ACCORDANCE WITH ASME Y14.5M-1994 AS MODIFIED BY THE 2018 GLOBAL DIMENSIONING AND TOLERANCING ADDENDUM - 1997. ALL GEOMETRIC TOLERANCES AND RELATED DATUMS APPLY RFS. RULE #1 (PERFECT FORM AT MMC) DOES NOT APPLY WHEN RELATIONSHIP BETWEEN FEATURES IS ESTABLISHED BY ORIENTATION OR LOCATION TOLERANCES. SEPARATE POSITION CALLOUTS MAY BE GAGED SEPARATELY, REGARDLESS OF DATUM REFERENCE. ALL DIMENSIONS ARE IN MILLIMETERS	
REFERENCE	
THIRD ANGLE PROJECTION	DO NOT SCALE USE MATH DATA
UNIGRAPHICS	

<b>DELPHI</b>	
DELPHI PACKARD ELECTRIC SYSTEMS WARREN, OH	
DR	DATE
APVD1 E.A. CACHO	17JL03
APVD2 A UGALDE G	18JL03
APVD3 JOE SVETTE	11AU03
APVD4	
APVD5	
SUBSTANCES OF CONCERN AND RECYCLED CONTENT PER DELPHI 10945001	
MATERIAL M4433002	
DRAWING NAME GROM TAPE ON	
DRAWING NUMBER 15460149	
SIZE A1	SCALE 2:1
FRAME NO 1 OF 1	SHEET NO 1 OF 1
STG R	REV 02
N/P AD	

12 11 10 9

8 7 6 5 4 3 2 1