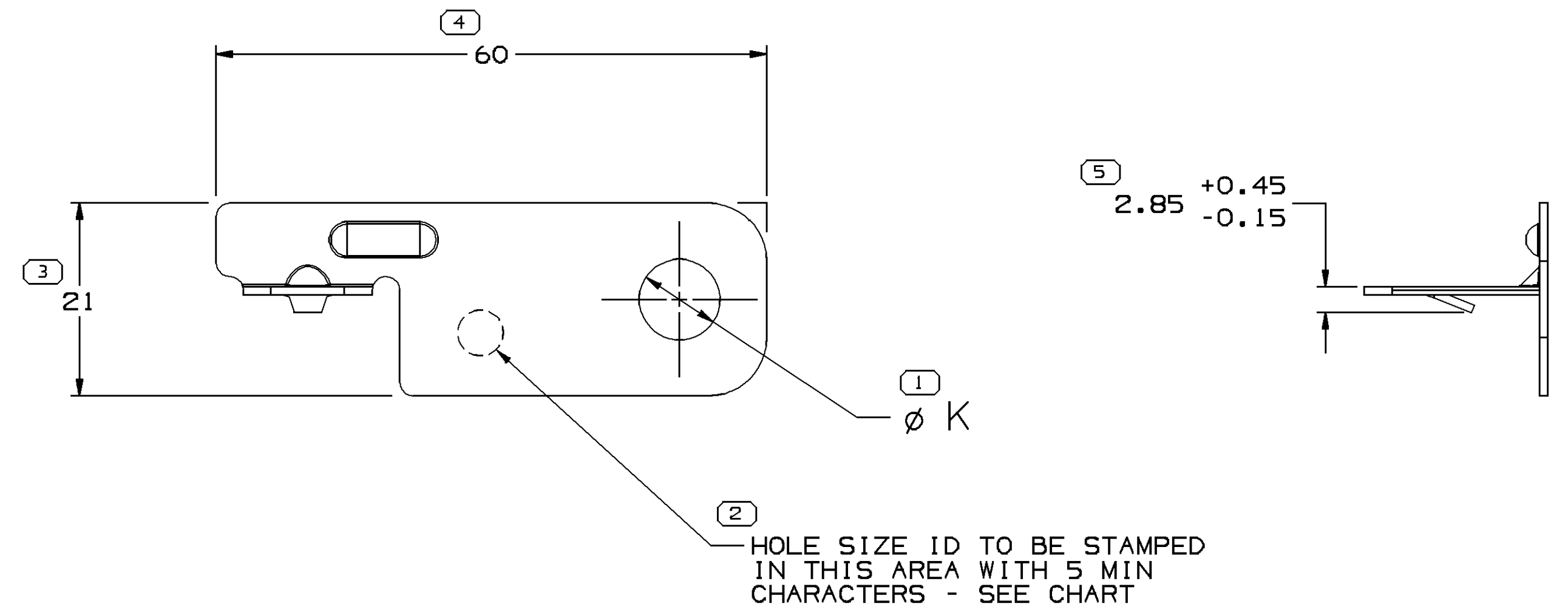
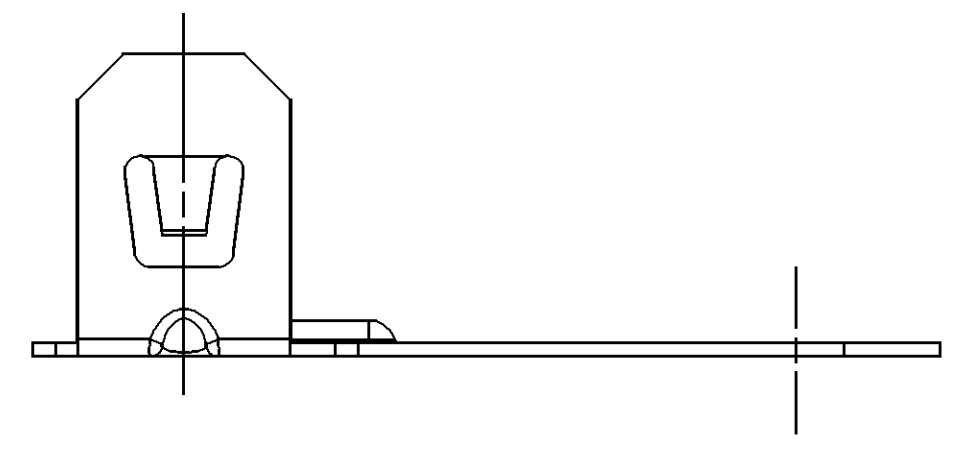


SYMBOL DEFINITION		MISSING SYMBOLS	
A DIMENSION WITHOUT AN INSPECTION REPORT SYMBOL DOES NOT REQUIRE INSPECTION. IT MAY BE CONTROLLED ON THE INDIVIDUAL COMPONENT DRAWING.	TOTAL NO OF INSPECTIONS REQUIRED	NO MISSING SYMBOL NUMBER	
	5		
	LAST NO. USED		
	5		

DWG STATUS				ZONE	REVISION HISTORY	AUTH	DR	APVD1	APVD2
DATE	STG	REV	N/P						
10SE03	R	01	-	-	CLEARED REV COL: 15479742 - RELEASED; 12084933 - ADDED PROCESS NOTE 4 AND REVISED PROCESS NOTES CALL OUT INFORMATION	245899	CMZ	RCH	FR
14JN04	R	02	-	-	12045751 - OBSOLETE AND ADDED NOTE 6	253207	ESH	JVM	SAN
29JL04	R	03	-	-	ADDED PARTS 15477649 AND 15477664 - RELEASED	257332	RH	RH	SAN
21JA05	R	04	-	-	ALL ACTIVE PARTS - 2.85 +0.45/-0.15 WAS 2.85	263705	RTV	JAA	TP
240C05	R	05	-	-	12034187, 12045410, 12084933, 15304637 & 15479742 - OBSOLETE	273250	MDH	JVM	PGD
06JN06	R	06	-	-	REMOVED HEXAVALENT CHROME COATING NOTE; ALL ACTIVE PARTS - UPDATED PD INFO	281427	JTZ	JAA	TP



2 HOLE SIZE ID TO BE STAMPED IN THIS AREA WITH 5 MIN CHARACTERS - SEE CHART

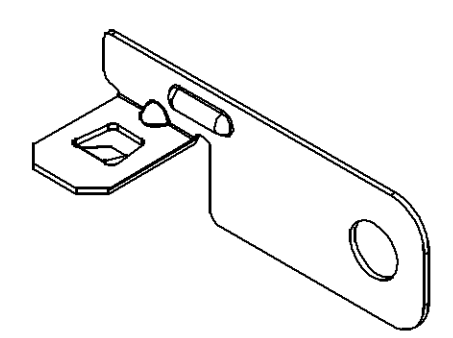


NOTES

- UNLESS OTHERWISE SPECIFIED AND/OR INDICATED:  
DIMENSIONS ARE TO FACE OF VIEW SHOWN AND AUTOMATICALLY ROUNDED BY COMPUTER FOR INSPECTION (SEE MATH MODEL FOR PRECISE DIMENSIONS). FOR ALL OTHER DIMENSIONS NOT SHOWN BUT REQUIRED FOR TOOL BUILD, SEE MATH MODEL FOR PRECISE TOOL PATH DATA.
- PROCESS OPERATIONS TO BE PERFORMED IN SEQUENCE SHOWN IN CHART
- REFERENCE MATING COMPONENTS OR EQUIVALENT:  
CLIP 12033957
- THE PROCESS NOTES SHOWN ABOVE ALSO APPEAR ON THE CLIP ASSEMBLY - TAXI DWG 12034064.
- MISMATCH NOTCHES (OPTIONAL) 0.04 R MAX 0.04 DEEP MAX ALLOWED ON EDGES SHOWN

PROCESS NOTES

- ZINC PLATE AND GOLD CHROMATE PER GM- 4342 CODE 10D24
- PHOSPHATE/ORGANIC/OIL TYPE COATING PER GM-6174-M BLACK
- PLATE TO "0.0003" MIN ZINC WITH BLACK CHROMATE. THEN 2 COATS LOW TEMP CURE BLACK ORGANIC TOPCOAT. FINISH MUST WITHSTAND 400 HRS MIN TO RED RUST IN NEUTRAL SALT FOG, EXCEPT FOR SHARP EDGES.
- ZINC-ALUMINUM/INORGANIC TYPE PLATING PER GM-6173-M BLACK. PLATING REQUIREMENTS TO WITHSTAND 168 HOURS MINIMUM TO RED RUST IN NEUTRAL SALT FOG, EXCEPT FOR SHARP EDGES.



PART NO	REV	N/P	STATUS	SIZE	SPEC	PROCESS NOTES	APPLICABLE STOCK THK	Ø K ±0.1	HOLE SIZE ID
15477664	01	AB		0.9	M4868			10.6	M10
15477649	01	AB		0.9	M4868			8.8	M8
15479742	01	AB	OBSOLETE	0.9	SAE 1008 STL	4		8.8	M8
15304637	A6	-	OBSOLETE	0.9	SAE 1008 STL	3		10.6	M10
12084933	03	AB	OBSOLETE	0.9	SAE 1008 STL	4		8.8	M8
12045751	B5	-	OBSOLETE	0.9	SAE 1008 STL	1		6.5	M6
12045410	B6	-	OBSOLETE	0.9	SAE 1008 STL	1		10.6	M10
12034187	B6	-	OBSOLETE	0.9	SAE 1008 STL	1		8.8	M8

4 PROCESS SENSITIVE DIMENSION	
DIMENSIONS ENCLOSED IN ( ) INDICATE REFERENCE DIMENSIONS AND NO TOLERANCE LIMITS ARE ESTABLISHED	
DIMENSIONAL RANGE (MM)	CHART
FROM 0	12
TO 12	> 12
TOLERANCE UNLESS OTHERWISE SPECIFIED	
±0.15	±0.3
ANGULAR TOLERANCE ±2°	

DWG TYPE PART DRAWING	
STYLE	
VOLUME (QTY)	DISTR CODE
	D
UNLESS OTHERWISE SPECIFIED THIS DOCUMENT IS IN ACCORDANCE WITH ASME Y14.5M-1994 AS AMENDED BY THE GM GLOBAL DIMENSIONING AND TOLERANCING ADDENDUM-2001. SEPARATE PATTERNS OF FEATURES MAY BE BAGGED SEPARATELY REGARDLESS OF DATUM REFERENCES.	
ALL DIMENSIONS ARE IN MILLIMETERS	
THIRD ANGLE PROJECTION	DO NOT SCALE
USE MATH DATA	UNIGRAPHICS

**DELPHI**  
DELPHI PACKARD ELECTRIC SYSTEMS  
WARREN, OH

DR	DATE
APVD1 F. MIRANDA	25MY01
APVD2 FCO. RESENDIZ	29MY01
APVD3 ERIC TRACEY	31MY01
APVD4	
APVD5	

SUBSTANCES OF CONCERN AND RECYCLED CONTENT PER DELPHI 10949001

MATERIAL SEE CHART

DRAWING NAME TAXI MOUN BRKT CLIP

DRAWING NUMBER 12034026

SIZE A1	SCALE 2:1	FRAME NO 1 OF 1	SHEET NO 9 OF	STG R	REV 06	N/P -
---------	-----------	-----------------	---------------	-------	--------	-------