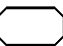
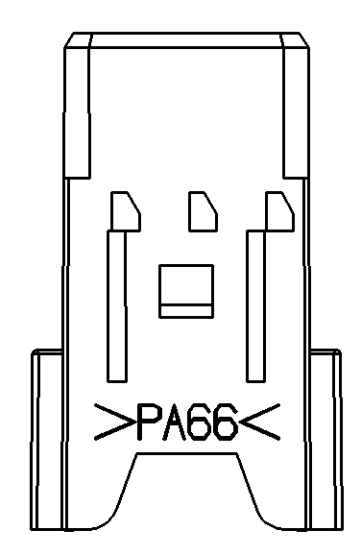
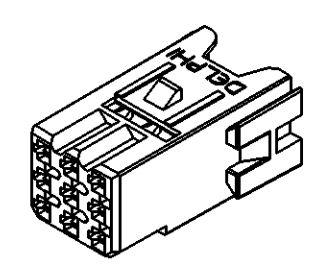
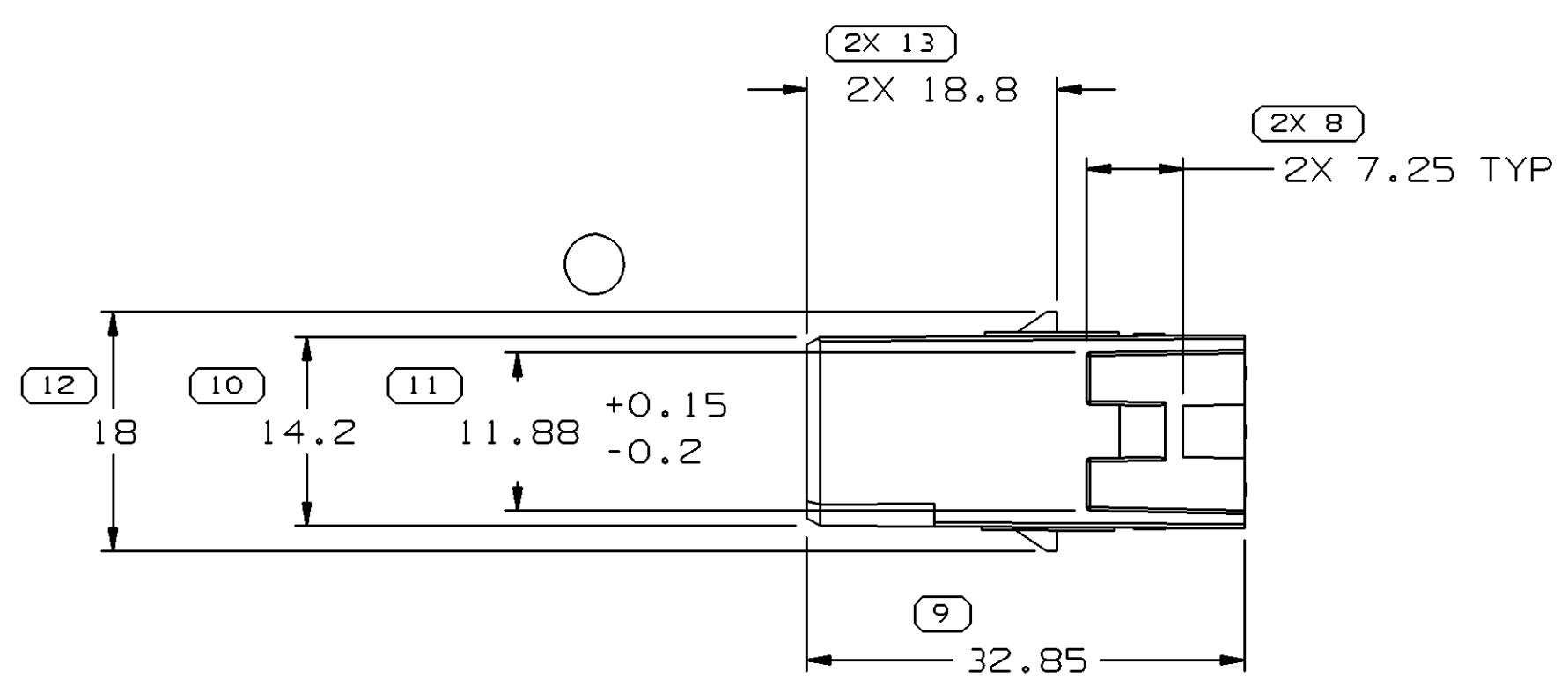
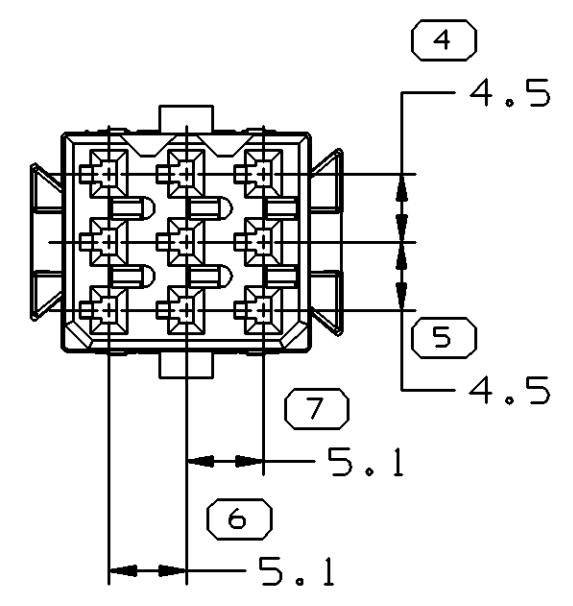
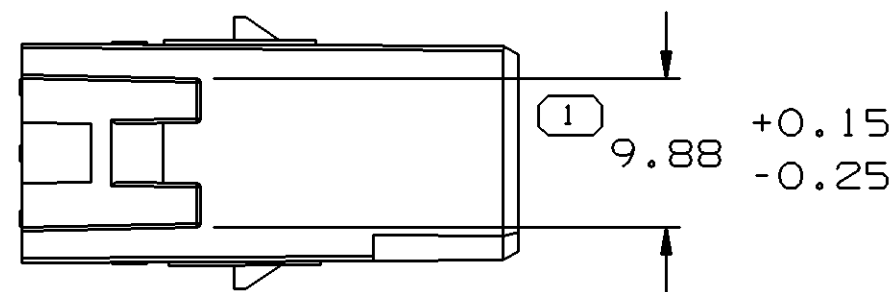
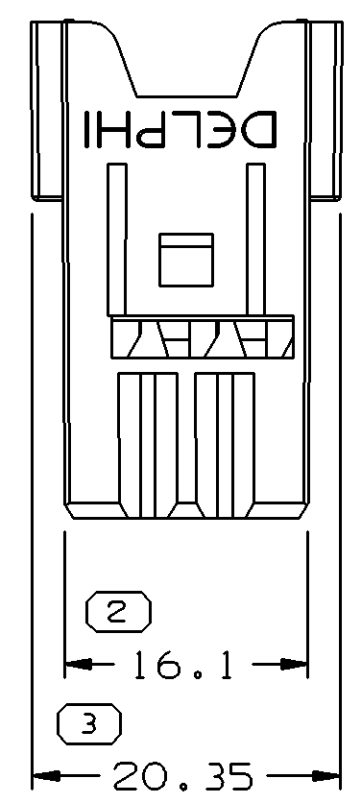


| SYMBOL DEFINITION   |                                  | MISSING SYMBOLS          |
|---|----------------------------------|--------------------------|
| A DIMENSION WITHOUT AN INSPECTION REPORT SYMBOL  DOES NOT REQUIRE INSPECTION. IT MAY BE CONTROLLED ON THE INDIVIDUAL COMPONENT DRAWING. | TOTAL NO OF INSPECTIONS REQUIRED | NO MISSING SYMBOL NUMBER |
|   | 15                               |                          |
|   | LAST NO. USED                    |                          |
|   | 13                               |                          |

| DWG STATUS |     |     |     |     | ZONE | REVISION HISTORY                   | AUTH   | DR  | APVD 1 | APVD 2 |
|------------|-----|-----|-----|-----|------|------------------------------------|--------|-----|--------|--------|
| DATE       | STG | REV | N/P | CHG |      |                                    |        |     |        |        |
| 220C03     | R   | 01  | -   | -   |      | WAS 15475413, REVISED AND RELEASED | 247841 | ADK | EES    | GD     |
| 07N003     | R   | 01  | AA  | -   |      | 9.88+0.15-0.25 WAS 9.88            | 248661 | TLD | TLD    | GD     |
| 12N003     | R   | 01  | AB  | -   |      | 11.88+0.15-0.2 WAS 11.88           | 248774 | TLD | TLD    | GD     |



NOTES

- UNLESS OTHERWISE SPECIFIED AND/OR INDICATED: DIMENSIONS ARE TO FACE OF VIEW SHOWN AND AUTOMATICALLY ROUNDED BY COMPUTER FOR INSPECTION (SEE MATH MODEL FOR PRECISE DIMENSIONS). FOR ALL OTHER DIMENSIONS NOT SHOWN BUT REQUIRED FOR TOOL BUILD, SEE MATH MODEL FOR PRECISE TOOL PATH DATA.
- MATERIAL RECYCLING CODE PER ISO 11469. (2.3)X(0.1) RAISED CHARACTERS AS SHOWN TO BE LOCATED ON ANY EXTERIOR SURFACE. OPTIONAL CONSTRUCTION TO BE NO MATERIAL RECYCLING CODE.
- MATING COMPONENTS OR EQUIVALENT:  
CONNECTOR 12185085  
GROMMET RETAINER 15402013
- (2.3)X(0.1) RAISED DELPHI CORPORATE BRAND TO BE LOCATED ON ANY EXTERIOR SURFACE, PREFERABLY VISIBLE AT FINAL ASSEMBLY. OPTIONAL CONSTRUCTION TO BE "PED" OR NO LOGO.
- THIS PART ACCEPTS THE FOLLOWING COMPONENTS OR EQUIVALENT:  
SECONDARY LOCK 15354674  
TERMINAL 15343974
- THIS PART DOES NOT FALL IN TO THE CATEGORY OF AN APPEARANCE ITEM. MINOR SURFACE IMPERFECTIONS SUCH AS FLOW LINES, EJECTOR PIN MARKS, KNIT LINES, WELD MARKS AND GATE MARKINGS ARE PERMITTED.

|   |                 |
|---|-----------------|
| DWG TYPE<br>PART DRAWING  |                 |
| STYLE   |                 |
| VOLUME (CM <sup>3</sup> )<br>3.216  | DISTR CODE<br>D |
| ROUTING<br>6901   |                 |
| UNLESS OTHERWISE SPECIFIED<br>THIS DOCUMENT IS IN ACCORDANCE WITH ASME Y14.5M-1994 AS AMENDED BY THE GM GLOBAL DIMENSIONING AND TOLERANCING ADDENDUM - 1997. ALL GEOMETRIC TOLERANCES AND RELATED DATUMS APPLY RFS. RULE #1 PERFECT FORM AT MMC DOES NOT APPLY WHEN RELATIONSHIP BETWEEN FEATURES IS ESTABLISHED BY ORIENTATION OR LOCATION TOLERANCES. SEPARATE POSITION CALLOUTS MAY BE GAGED SEPARATELY, REGARDLESS OF DATUM REFERENCE.<br>ALL DIMENSIONS ARE IN MILLIMETERS |                 |
| THIRD ANGLE PROJECTION  |                 |
| DO NOT SCALE  |                 |
| USE MATH DATA   |                 |

**DELPHI**  
DELPHI PACKARD ELECTRIC SYSTEMS  
WARREN, OH

|                         |        |
|-------------------------|--------|
| DR                      | DATE   |
| APVD1 ADAM D. KIMBERLIN | 220C03 |
| APVD2 E. SEIDEL         | 220C03 |
| APVD3 GARY DETTER       | 220C03 |
| APVD4                   |        |
| APVD5                   |        |

SUBSTANCES OF CONCERN AND RECYCLED CONTENT PER DELPHI 10949001

MATERIAL  
M3592012 PA66 HS IM GRA LT

DRAWING NAME  
CONN 9 DUCON 1.5 GRA

DRAWING NUMBER  
**15482740**

|            |              |                    |                    |          |           |           |
|------------|--------------|--------------------|--------------------|----------|-----------|-----------|
| SIZE<br>A1 | SCALE<br>2:1 | FRAME NO<br>1 OF 1 | SHEET NO<br>1 OF 1 | STG<br>R | REV<br>01 | N/P<br>AB |
|------------|--------------|--------------------|--------------------|----------|-----------|-----------|

|                        |           |                        |      |          |      |      |      |      |      |      |
|------------------------|-----------|------------------------|------|----------|------|------|------|------|------|------|
| R 0.2 MAX              | R 0.1 MAX | DIMENSIONAL RANGE (MM) |      | CHART E1 |      |      |      |      |      |      |
|                        |           | FROM                   | TO   | FROM     | TO   |      |      |      |      |      |
|                        |           | >0                     | >20  | >30      | >70  | >100 | >150 | >200 | >250 | >300 |
|                        |           | ±0.15                  | ±0.2 | ±0.3     | ±0.4 | ±0.5 | ±0.6 | ±0.8 | ±1   | ±1.2 |
| SHARP CORNER TOLERANCE |           | ANGULAR TOLERANCE ±2°  |      |          |      |      |      |      |      |      |

9 PROCESS SENSITIVE DIMENSION  
DIMENSIONS ENCLOSED IN ( ) INDICATE REFERENCE DIMENSIONS AND NO TOLERANCE LIMITS ARE ESTABLISHED