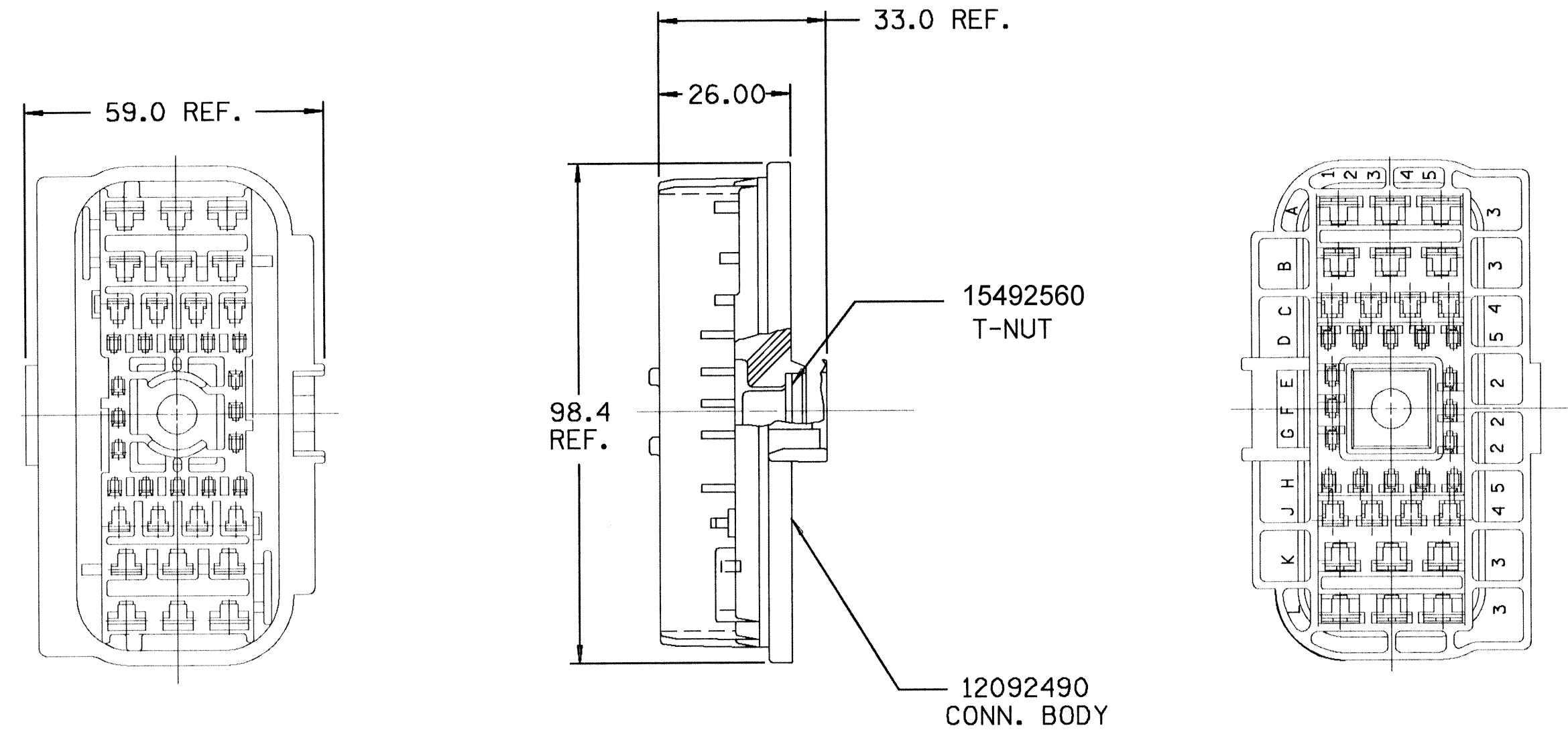


DWG STATUS					ZONE	REVISION HISTORY			AUTH		DR		APVD	
DATE	STG	REV	N/P	CHG		RELEASED, WAS 12092491	255957	AKJ	AKJ	AKJ	AKJ	AKJ	AKJ	AKJ
25MY04	R	01	-	-										



- NOTES** —
1. NUT MUST NOT ROTATE IN CONNECTOR WHEN ASSEMBLED WITH 12064831 MATING CONNECTOR USING A TORQUE OF 13.6 NM.
 2. CAVITIES A1,A3,L1 AND L3 TO ACCEPT 630 SERIES TERMINAL 12015869 OR EQUIVALENT.
 3. CAVITIES A2,B1,B2,B3,K1,K2,K3 AND L2 TO ACCEPT 480 SERIES TERMINAL 12015828 OR EQUIVALENT.
 4. CAVITIES C1,C2,C3,C4,J1,J2,J3 AND J4 TO ACCEPT 280 SERIES TERMINAL 12015823 OR EQUIVALENT.
 5. CAVITIES D1,D2,D3,D4,D5,E1,E2,F1,F2,G1,G2,H1,H2,H3,H4 AND H5 TO ACCEPT 150 SERIES TERMINAL 12047883 OR EQUIVALENT.
 6. THIS PART ACCEPTS 12064835 SECONDARY LOCK COMB OR EQUIVALENT.
 7. THIS PART MATES TO 12064839 CONNECTOR BODY ASSEMBLY OR EQUIVALENT.
 8. THIS PART IS NOT CONTROLLED FOR AUTOMATIC FEEDING.
 9. THE T-NUT MUST WITHSTAND A MINIMUM PUSH OUT FORCE OF 980 NEWTONS (220 POUNDS).
 10. **TOLERANCE UNLESS OTHERWISE SPECIFIED DECIMAL ONE PLACE: +/- 0.3 TWO PLACE: +/- 0.15**

DWG TYPE		PART DRAWING	
STYLE			
VOLUME (CM ³)	DISTR CODE		
ROUTING	D		
6900			
UNLESS OTHERWISE SPECIFIED			
THIS DOCUMENT IS IN ACCORDANCE WITH ASME Y14.5M-1994 AS AMENDED BY THE GM GLOBAL DIMENSIONING AND TOLERANCING ADDENDUM-2001. SEPARATE PATTERNS OF FEATURES MAY BE GAGED SEPARATELY REGARDLESS OF DATUM REFERENCES.			
ALL DIMENSIONS ARE IN MILLIMETERS			
REFERENCE			
THIRD ANGLE PROJECTION	DO NOT SCALE	UNIGRAPHICS	
USE MATH DATA			

DELPHI						
DELPHI PACKARD ELECTRIC SYSTEMS WARREN, OH						
DR	DATE					
APVD1						
APVD2 ANAND JAGANATHAN	25MY04					
APVD3 MATT ROUSSEL	25MY04					
APVD4						
APVD5						
SUBSTANCES OF CONCERN AND RECYCLED CONTENT PER DELPHI 10949001						
MATERIAL SEE DRAWING						
DRAWING NAME						
ASM CONN 36F M/P MXD						
DRAWING NUMBER						
15492591						
SIZE	SCALE	FRAME NO	SHEET NO	STG	REV	N/P
A1	NONE	1 OF 1	1 OF 1	R	01	-

User: 22AM02
 Part: 002901 Date: 25-Jul-04 Time: 14:05
 Message: