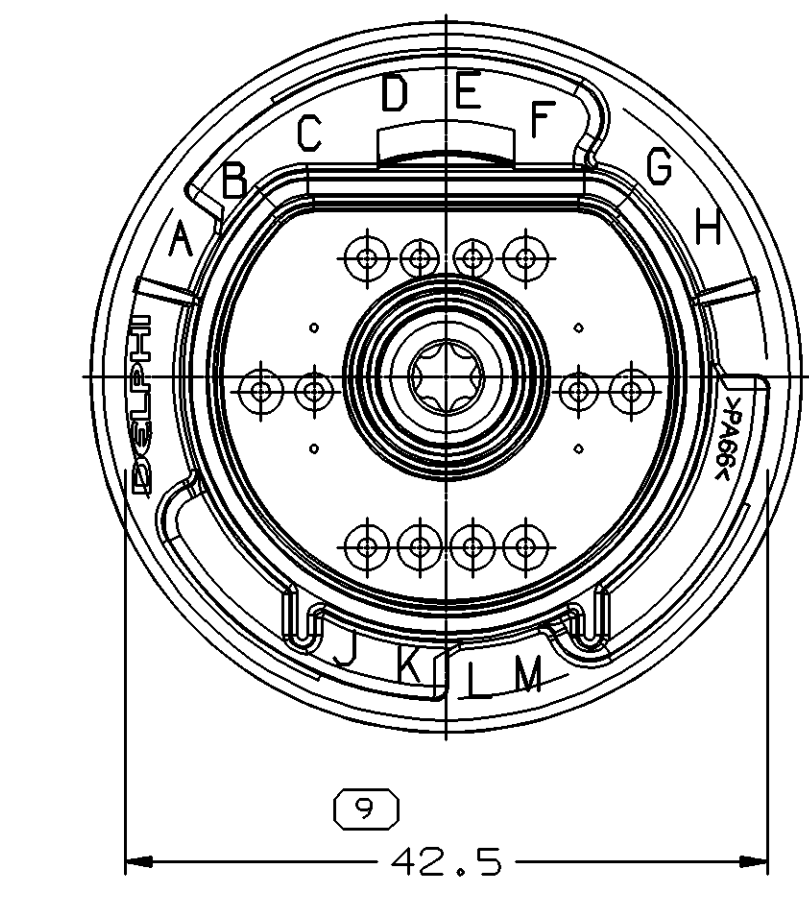
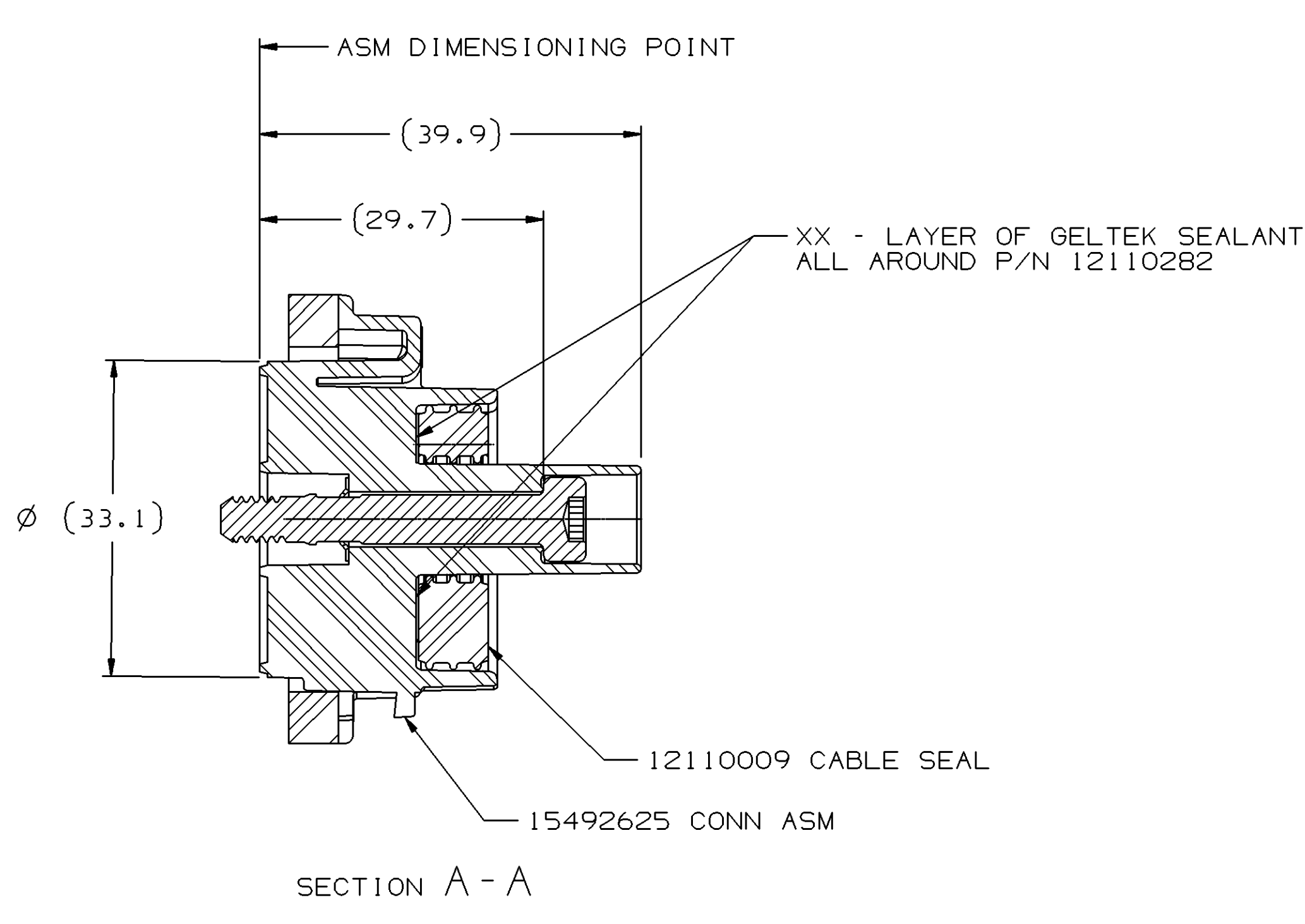
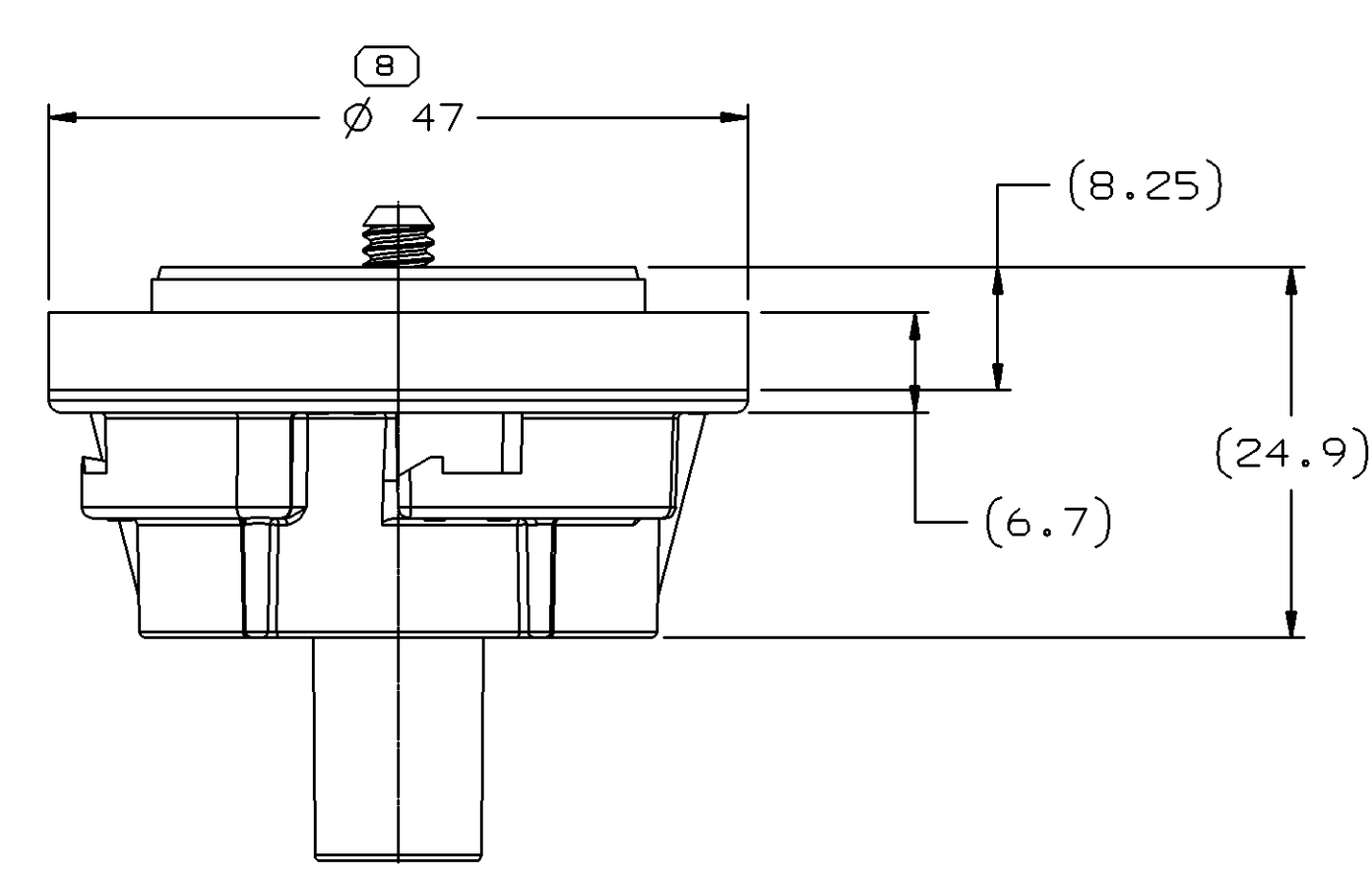
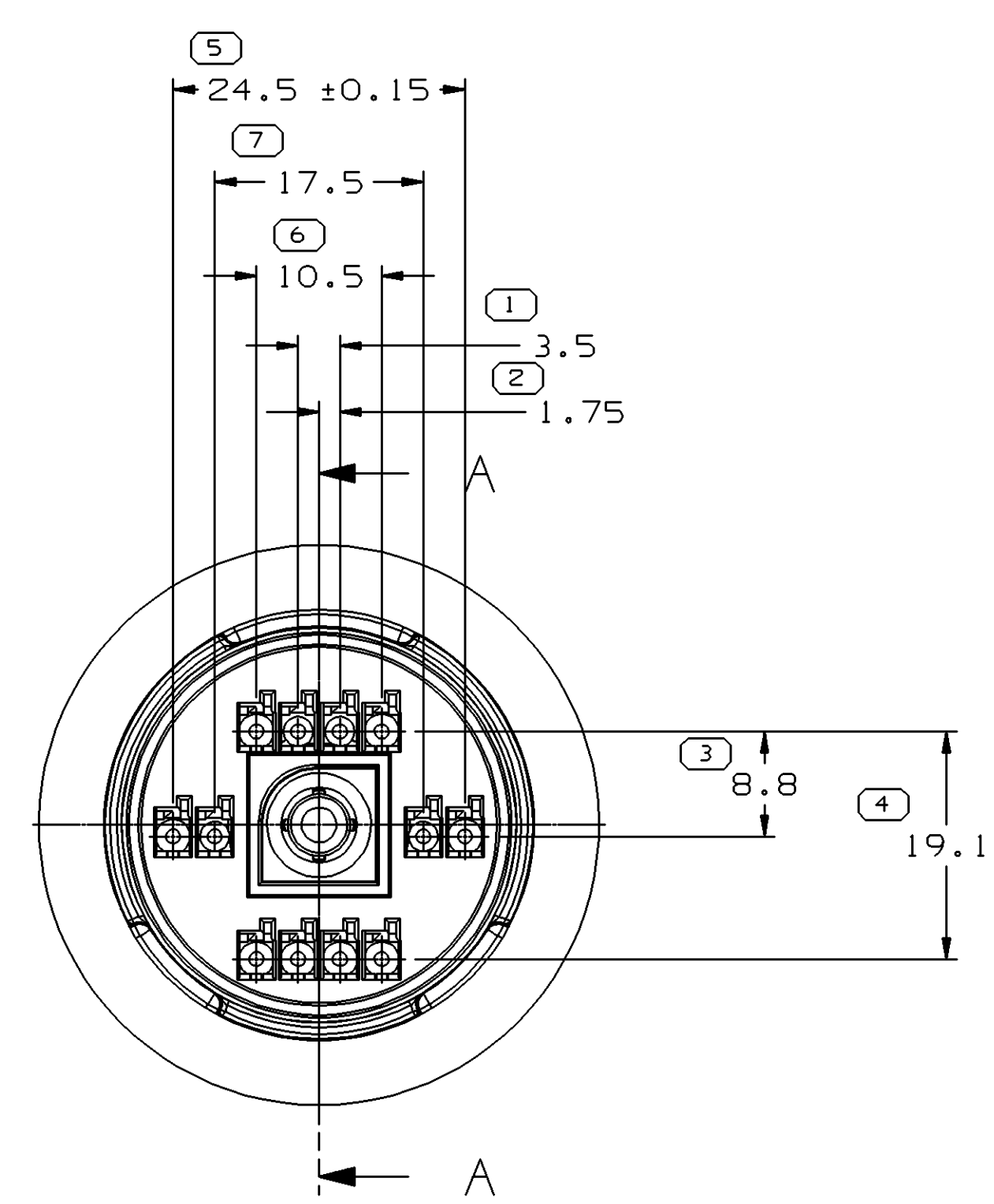
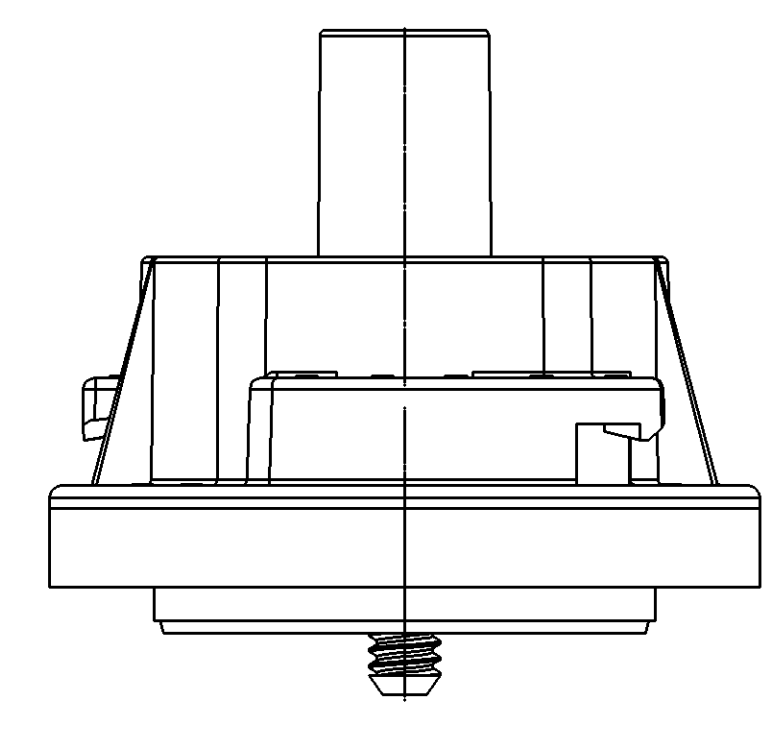
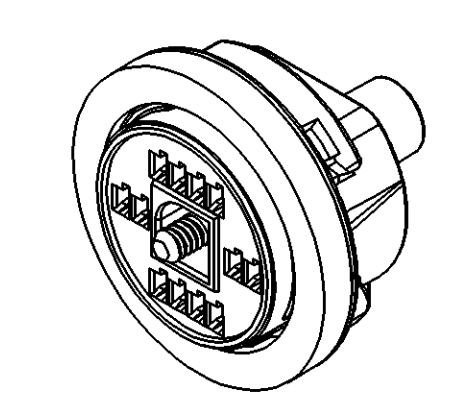


SYMBOL DEFINITION		MISSING SYMBOLS	
A DIMENSION WITHOUT AN INSPECTION REPORT SYMBOL DOES NOT REQUIRE INSPECTION. IT MAY BE CONTROLLED ON THE INDIVIDUAL COMPONENT DRAWING.	TOTAL NO OF INSPECTIONS REQUIRED	NO MISSING SYMBOL NUMBER	
	10		
	LAST NO. USED		
	10		

DWO STATUS					REVISION HISTORY					AUTH	DR	APVD	APVD
DATE	STG	REV	N/P	CHK	ZONE								
25MY04	U	01	-	-					RELEASED - WAS	12162905	256020	RH	MR



- NOTES
- UNLESS OTHERWISE SPECIFIED AND/OR INDICATED: DIMENSIONS ARE TO FACE OF VIEW SHOWN AND AUTOMATICALLY ROUNDED BY COMPUTER FOR INSPECTION (SEE MATH MODEL FOR PRECISE DIMENSIONS). FOR ALL OTHER DIMENSIONS NOT SHOWN BUT REQUIRED FOR TOOL BUILD, SEE MATH MODEL FOR PRECISE TOOL PATH DATA.
  - THIS PART ACCEPTS THE FOLLOWING COMPONENTS OR EQUIVALENT: CAVITIES TO ACCEPT 12124075 TERMINAL OR EQUIVALENT. MAX INSULATION CRIMP MUST BE LESS THAN 2.68 HIGH AND 2.72 WIDE.
  - THIS ASSEMBLY TO BE BOLTED TO CONNECTOR ASSEMBLY 12110007 WITH A TORQUE ON THE BOLT OF 1.0 N-M TO 1.5N-M
  - TERMINAL POSITION ASSURANCE FEATURE IS ACHIEVED BY USE OF PULL TO SEAT TERMINAL DESIGN.
  - BOLT TO BE RETAINED IN ASSEMBLY TO A MINIMUM OF 4.00 N.
  - BOLT MUST ROTATE IN ASSEMBLY AT A TORQUE OF LESS THAN 0.60 N-M AFTER RETAINER IS ASSEMBLED.
  - WHEN PARTS ARE SHIPPED THEY MUST BE PACKED IN PLASTIC BAGS OR SHIPPING CONTAINERS MUST BE LINED WITH PLASTIC LINERS. BAGS OR LINERS MUST BE SEALED TO AVOID ENTRY OF FOREIGN MATTER.
  - SEALING CODE 3 - DESIGN WILL PASS SALT FOG AND IMMERSION TEST AFTER CONDITIONING AS SPECIFIED IN ESA-644 (WEATHER-PACK), ESA-710 (METRI-PACK), ESA-650 (UNDERHOOD MICRO-PACK), C-4006 (WORLD CONNECTOR), ETC WHEN MATED TO MATING PART OR EQUIVALENT



DIMENSIONAL RANGE (MM)		CHART ET	
FROM	TO	SCALE	ANGLE
> 0	> 20	> 30	> 70
> 20	> 30	> 70	> 100
> 30	> 70	> 100	> 150
> 70	> 100	> 150	> 200
> 100	> 150	> 200	> 250
> 150	> 200	> 250	> 300
> 200	> 250	> 300	> 400
TOLERANCE UNLESS OTHERWISE SPECIFIED		USE MATH DATA	
±0.15	±0.2	±0.3	±0.4
±0.5	±0.6	±0.8	±1
±1	±1.2	ANGULAR TOLERANCE ±2°	

**DELPHI**  
DELPHI PACKARD ELECTRIC SYSTEMS  
WARREN, OH

DR	DATE
APVD1 ROBERT HURD	25MY04
APVD2 ROBERT HURD	25MY04
APVD3 MATTHEW ROUSSEL	22JL04
APVD4	
APVD5	

UNLESS OTHERWISE SPECIFIED  
THIS DOCUMENT IS IN ACCORDANCE WITH ASME Y14.5M-1994  
AS AMENDED BY THE 2003 DIMENSIONING AND TOLERANCING ADDENDUM-2003. SEPARATE PATTERNING OF FEATURES MAY BE GIVEN SEPARATELY REGARDLESS OF DATUM REFERENCES.

ALL DIMENSIONS ARE IN MILLIMETERS

REFERENCE

DRAWING NAME  
ASM CONN O F M/P 150.2  
BLK SLD BASE 12

DRAWING NUMBER  
**15492626**

SIZE A0 SCALE 2:1 FRAME NO 1 SHEET NO 1 OF 1 DWG REV N/P 1 U 01