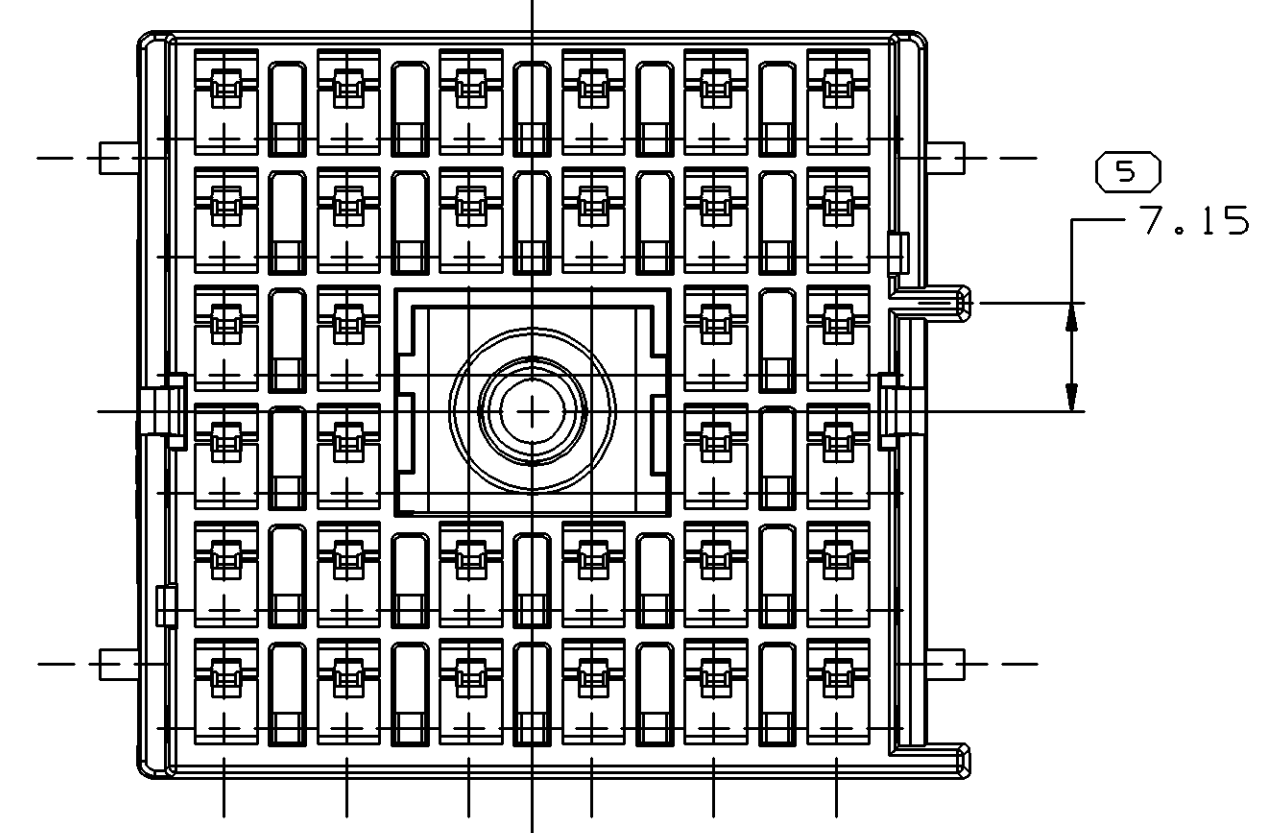
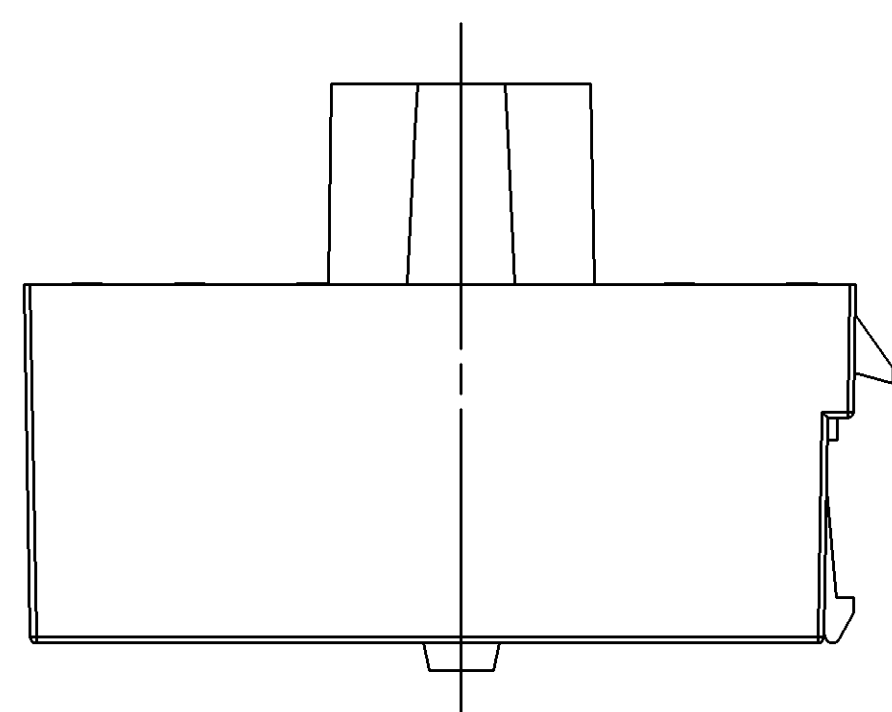


TYPE 102
SAME AS TYPE 101
EXCEPT AS SHOWN

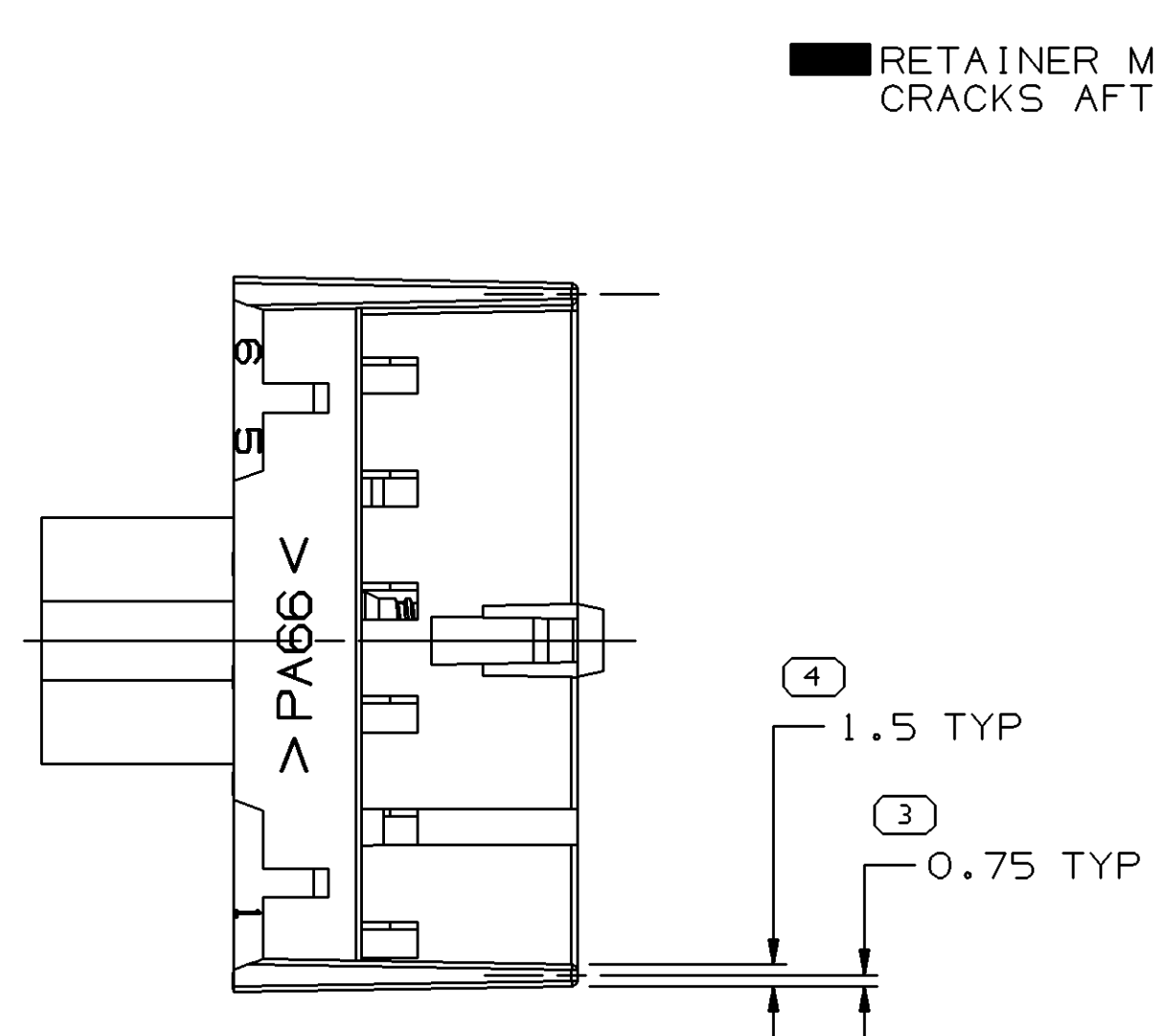


TYPE 103
SAME AS TYPE 101
EXCEPT AS SHOWN

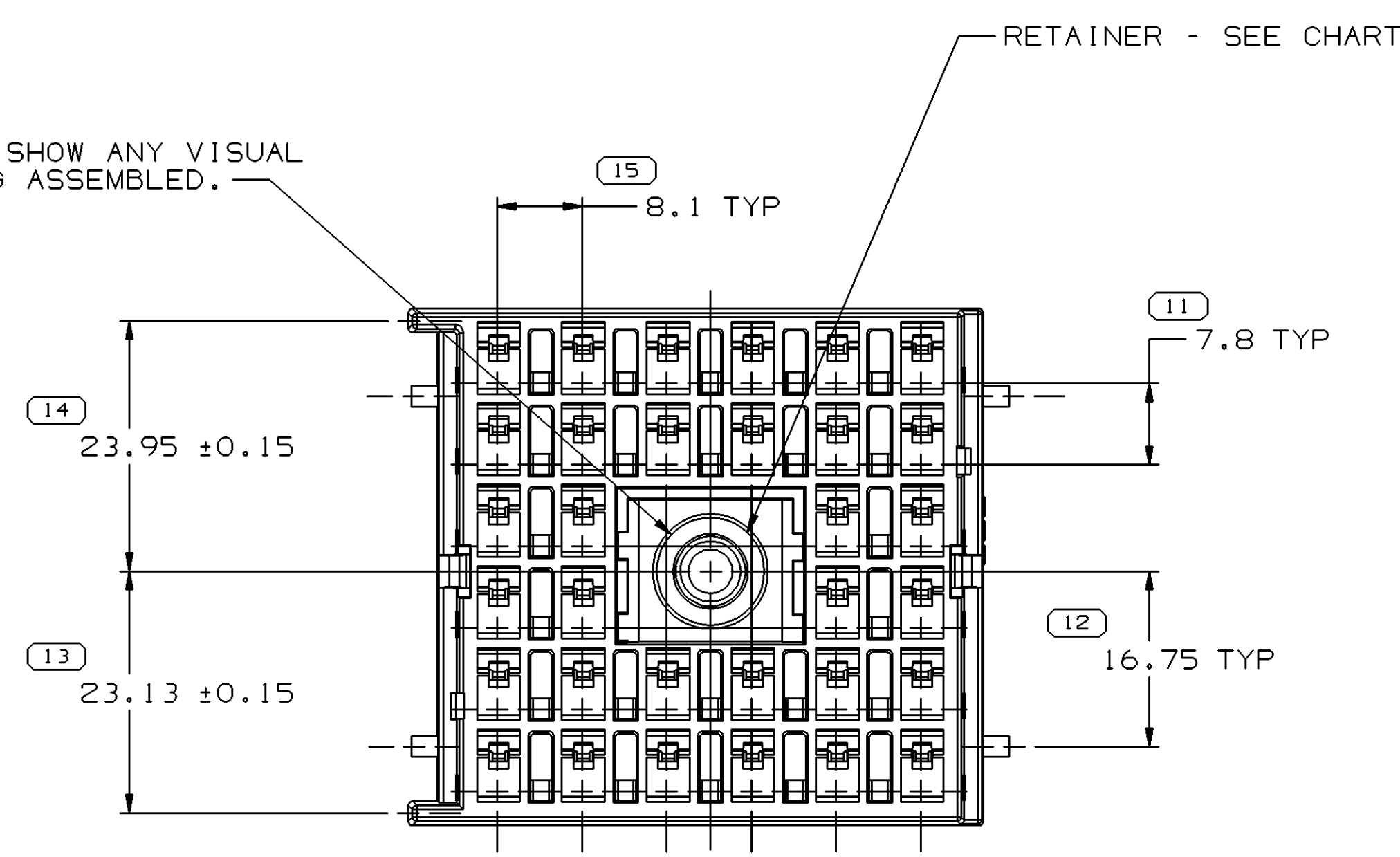


SYMBOL DEFINITION		TOTAL NO OF INSPECTIONS REQUIRED		MISSING SYMBOLS	
A DIMENSION WITHOUT AN INSPECTION REPORT SYMBOL DOES NOT REQUIRE INSPECTION. IT MAY BE CONTROLLED ON THE INDIVIDUAL COMPONENT DRAWING.		25		NO MISSING SYMBOL NUMBER	
		LAST NO. USED		20	

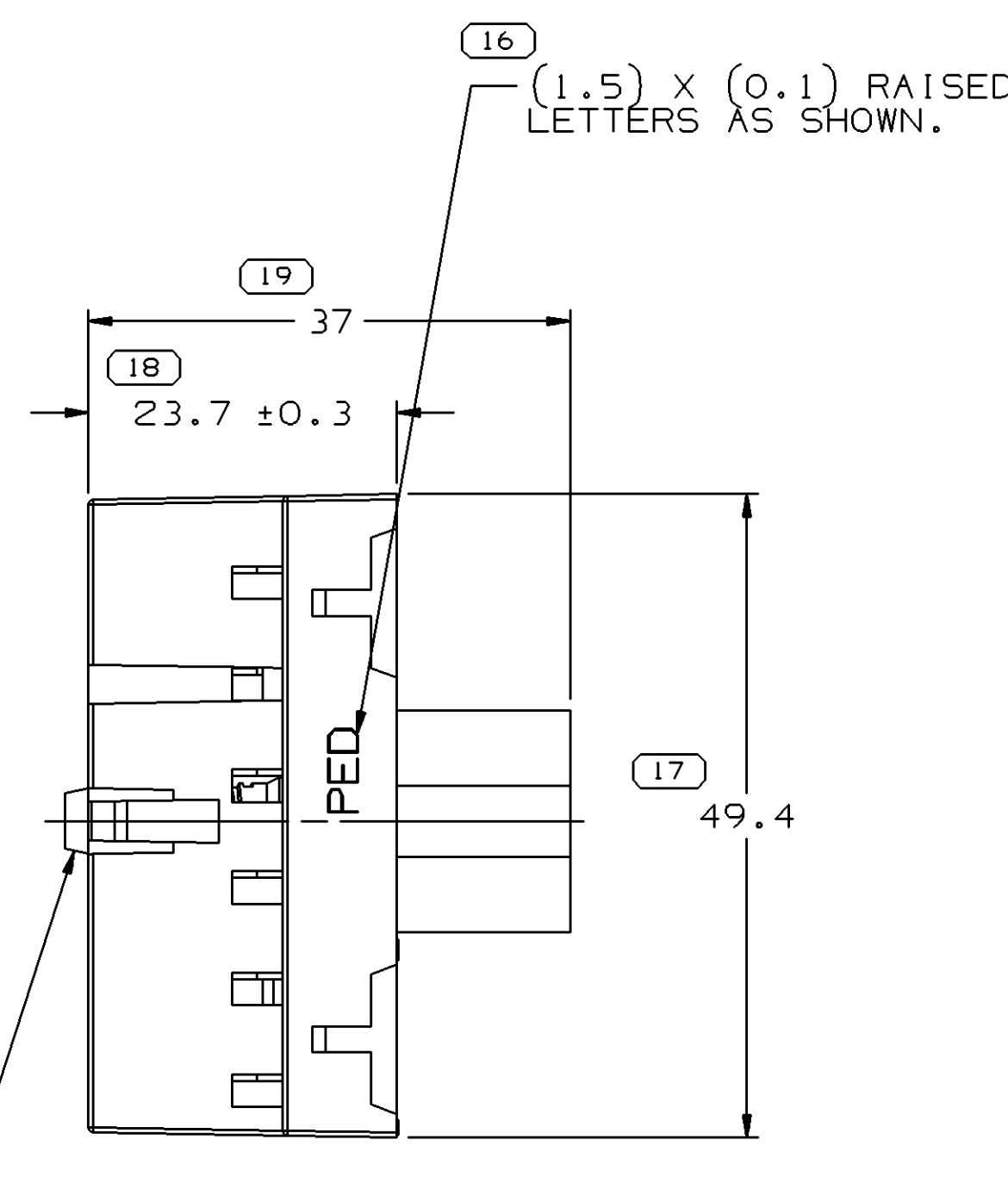
DWO STATUS						REVISION HISTORY				AUTH			DR			APVD		
DATE	STG	REV	N/P	CHO	ZONE						DR	APVD						
21DE99	R	001	-	-	-	ALL PARTS - REDRAWN TO PD, ADDED 38.79 ± 0.65 DIM, LABEL, NOTE & REMOVED NOTES				198120	DAA	GMC	DN					
01FE00	R	002	-	-	-	ALL PARTS - 38.8 ± 0.6 WAS 38.79 ± 0.65 & ADDED LABEL				199283	DAA	GMC	DN					
14JN04	R	03	-	-	-	12193915 - OBSOLETE AND ADDED NOTE 8				253207	JBD	JVM	SAN					
25MY04	R	04	-	-	-	12193914 & 12193916 - RESTRICTED; 15492648 & 15492649 - RELEASED				256336	ESH	JVM	WGR					
170C05	R	05	-	-	-	12193914 & 12193916 - OBSOLETE				273421	MOH	FRG	WGR					



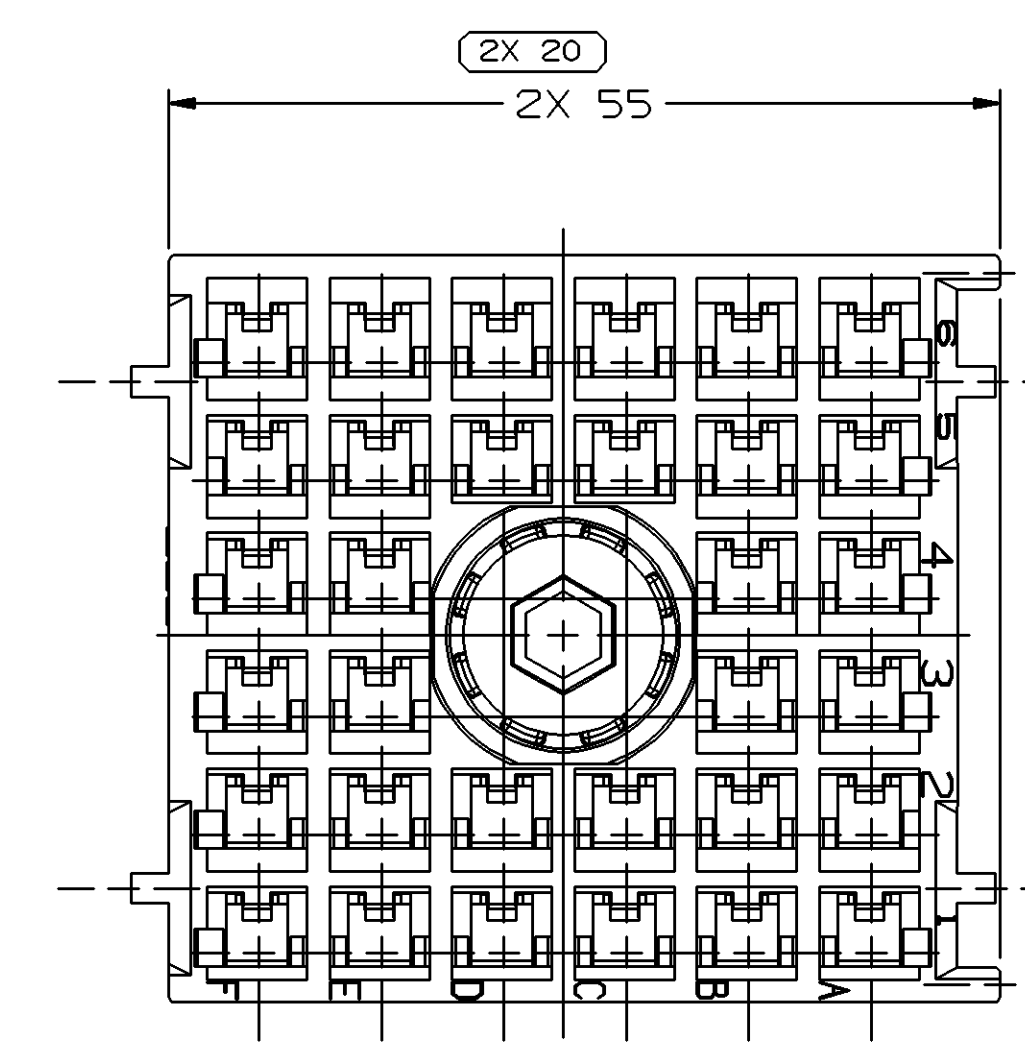
■ RETAINER MUST NOT SHOW ANY VISUAL CRACKS AFTER BEING ASSEMBLED.



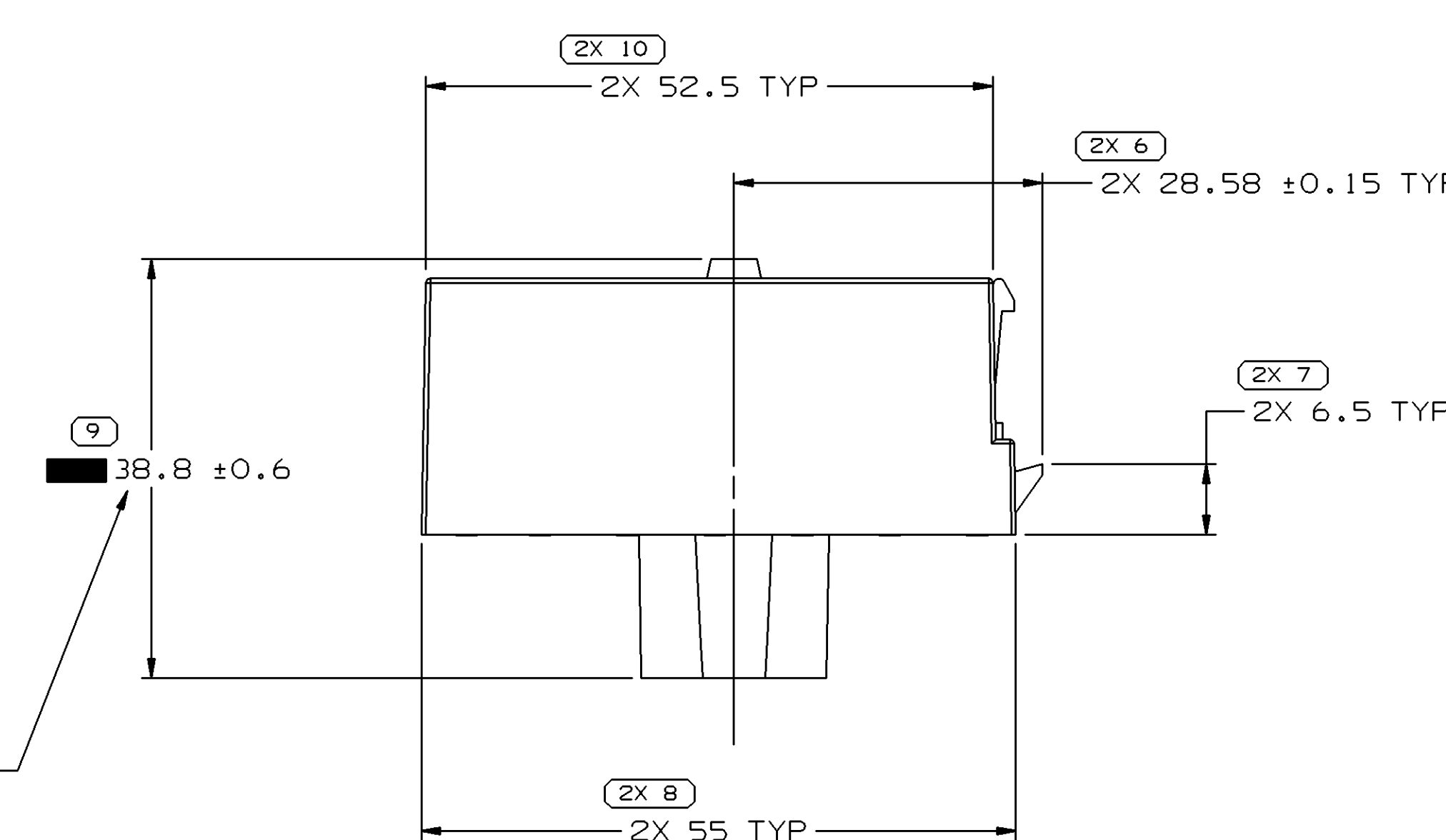
TYPE 101



16 (1.5) X (0.1) RAISED LETTERS AS SHOWN.

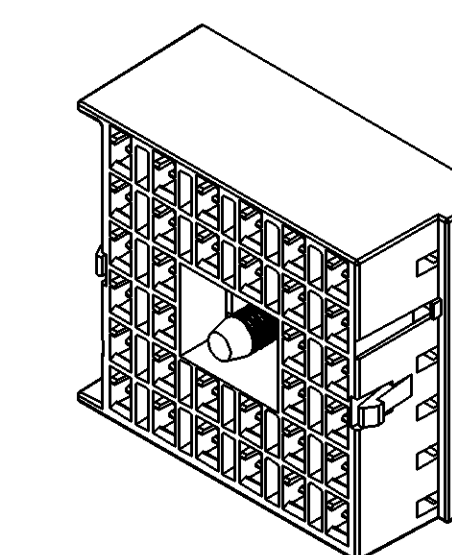


DIMENSION TO BE MEASURED WITH BOLT & RETAINER ALLOWED TO REST AGAINST CONNECTOR IN POSITION SHOWN



NOTES

- UNLESS OTHERWISE SPECIFIED AND/OR INDICATED:
DIMENSIONS ARE TO FACE OF VIEW SHOWN AND AUTOMATICALLY ROUNDED BY COMPUTER FOR INSPECTION. (SEE MATH MODEL FOR PRECISE DIMENSIONS.) FOR ALL OTHER DIMENSIONS NOT SHOWN BUT REQUIRED FOR TOOL BUILD, SEE MATH MODEL FOR PRECISE TOOL PATH DATA.
- WHEN PARTS ARE SHIPPED THEY MUST BE PACKED IN PLASTIC BAGS OR SHIPPING CONTAINERS MUST BE LINED WITH PLASTIC LINERS. BAGS OR LINERS MUST BE SEALED TO AVOID FOREIGN MATTER.
- SEALING CODE 0 - UNSEALED
- THIS PART ACCEPTS THE FOLLOWING COMPONENTS OR EQUIVALENT:
CAVITIES TO ACCEPT 12129424, 12110843 & 12129061 TERMINAL.
MAX INSULATION CRIMP MUST BE LESS THAN 6.1 HIGH AND 6.35 WIDE.
MAX CORE CRIMP MUST BE LESS THAN 2.4 HIGH AND 3.75 WIDE.
MAX CABLE DIAMETER 5.5 MM.
CONNECTOR TO ACCEPT 12193732 TERMINAL POSITION ASSURANCE LOCK.
- THIS ASM TO BE BOLTED TO THE MATING CONNECTOR ASSEMBLY WITH A TORQUE ON THE BOLT OF 5 - 8 NM.
- DIMENSIONS INDICATED BY "■" ARE CONTROLLED FOR THE COMPONENT ASSEMBLY. ALL OTHER DIMENSIONS ARE CONTROLLED BY THE INDIVIDUAL COMPONENT DRAWING.
- OBSOLETE PART(S) CONTAINS A HEXAVALENT CHROME COATING. DO NOT USE THIS PART ON NEW APPLICATIONS. HEXAVALENT CHROME IS A BANNED SUBSTANCE. IF THIS PART IS REQUIRED FOR CURRENT OR FUTURE BUSINESS OR FOR SERVICE REQUIREMENTS, CONTACT THE PRODUCT LINE ENGINEER OR MATERIALS ENGINEERING TO GET A NEW PART THAT IS FREE FROM HEXAVALENT CHROME. EXISTING INVENTORY OF THIS PART MAY BE USED UNTIL JULY 1, 2007 FOR SERVICE REQUIREMENTS.



PART NO	REV	N/P	STATUS	TYPE	CONN NUMBER	BOLT NUMBER	RETAINER NUMBER
15492649	01			103	12193912	15492568	15492512
15492648	01			101	12193910	15492568	15492512
12193916	B4	-	OBSOLETE	103	12193912	12065852	12004737
12193915	A4	-	OBSOLETE	102	12193911	12065852	12004737
12193914	B4	-	OBSOLETE	101	12193910	12065852	12004737

DIMENSIONAL RANGE (MM)	CHART ET
FROM > 0	> 20
TO 20	20
TOLERANCE UNLESS OTHERWISE SPECIFIED	
10, 15	± 0.2
10, 31	± 0.4
10, 5	± 0.6
10, 8	± 1
1	± 1.2
ANGULAR TOLERANCE 12°	

PART DRAWING	
STYLE	DATE
VOLUME (10%)	DISTR CODE
UNLESS OTHERWISE SPECIFIED	
PERFECT FORM REQUIRED FOR FEATURES OF SIZE AT MMC. THE POSITION TOLERANCES AND RELATED DATUMS APPLY AT CONDITION OF SIZE INDICATED IN FEATURE CONTROL FRAME. ALL OTHER GEOMETRIC TOLERANCES AND RELATED DATUMS APPLY SEPARATELY. SEPARATE TOLERANCE CALLOUTS MAY BE USED SEPARATELY, REGARDLESS OF DATUM REFERENCE.	
ALL DIMENSIONS ARE IN MILLIMETERS	
THIRD ANGLE PROJECTION	DO NOT SCALE
USE MATH DATA	UNSPRINTS

DELPHI
DELPHI PACKARD ELECTRIC SYSTEMS
WARREN, OH

DR	DATE
APVD1 E. NEAL DUNHAM	22JN96
APVD2 E. NEAL DUNHAM	22JN96
APVD3 E. ALTMAN	07DE96
APVD4	
APVD5	

SUBSTANCES OF CONCERN AND RECYCLED CONTENT PER DELPHI 10949001

MATERIAL SEC. DWG

DRAWING NAME
TAXI ASM CONN F M/P 280 FLXK

DRAWING NUMBER
12193913

SIZE A0 SCALE 2:1 FRAME NO 1 OF 1 SHEET NO 1 OF 1 REV 05