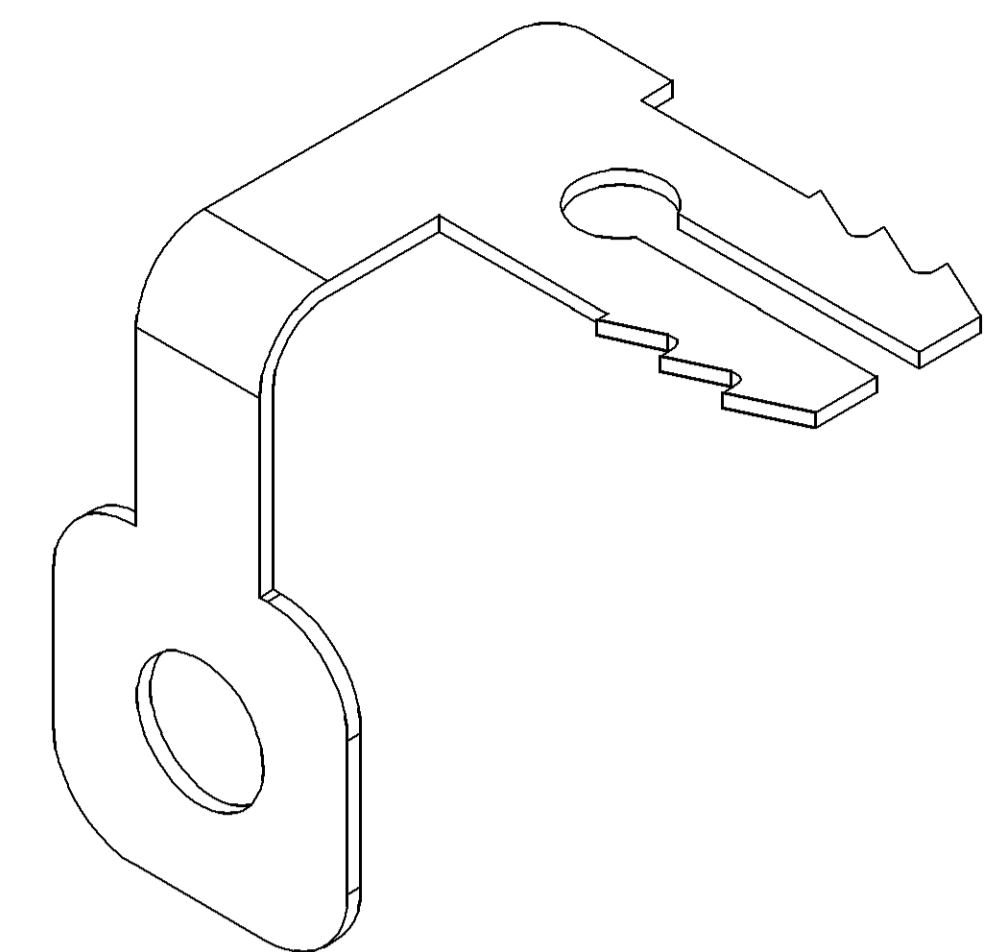
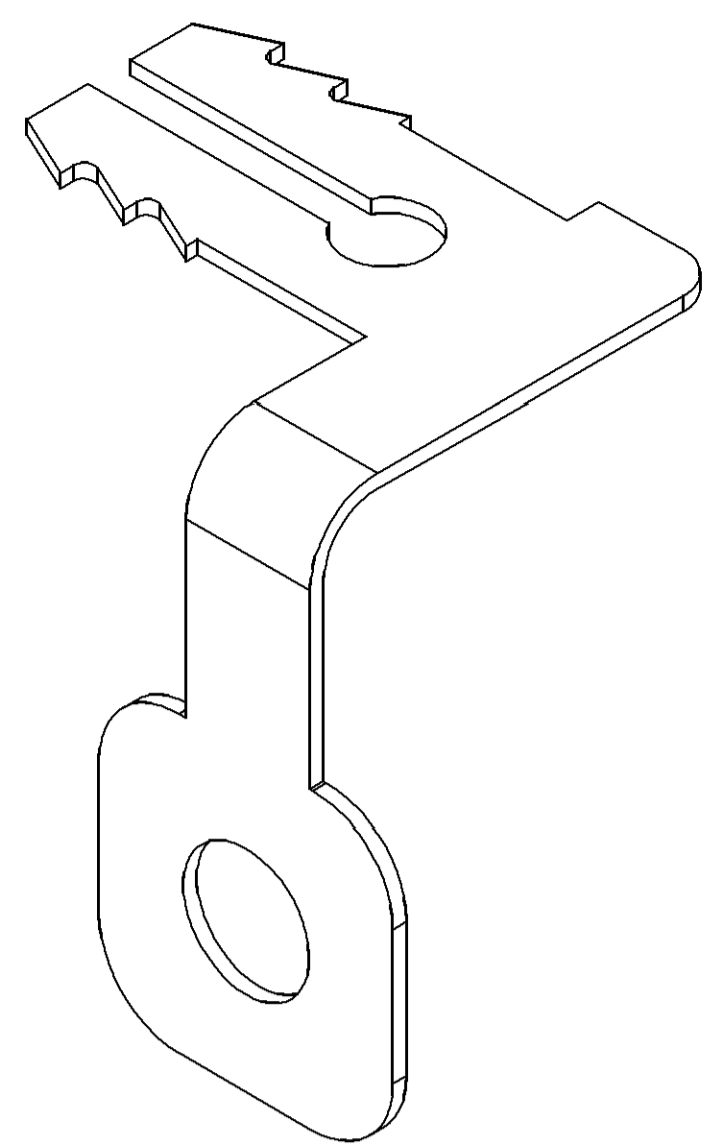
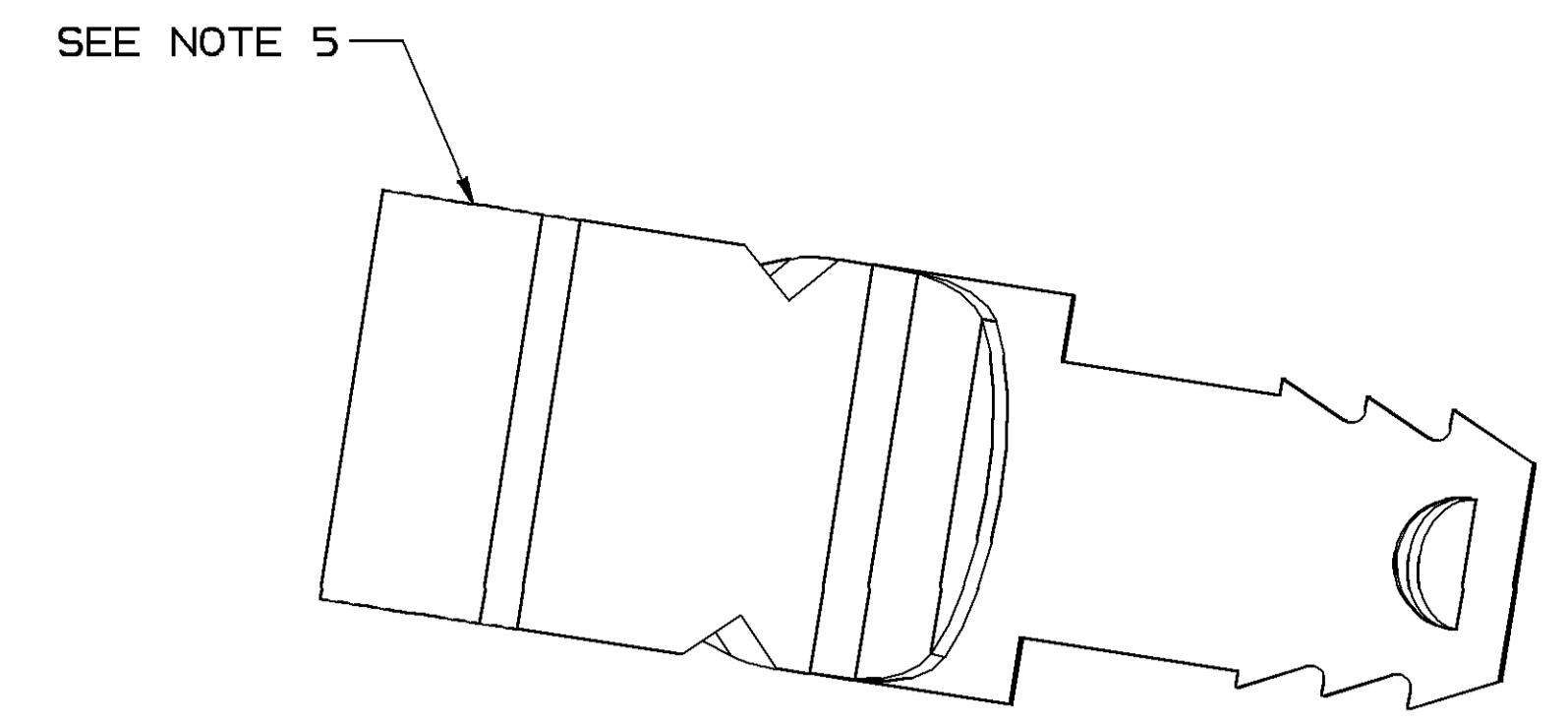
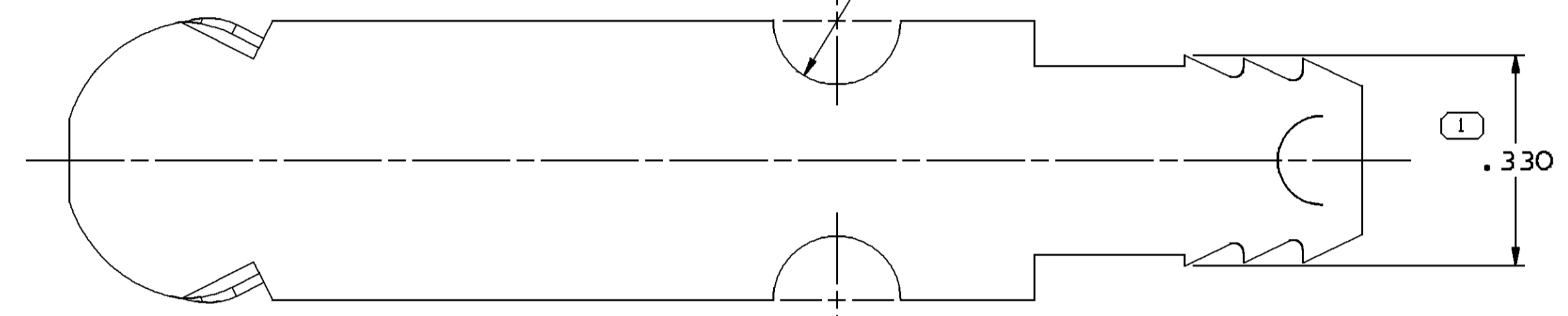


SYMBOL DEFINITION		MISSING SYMBOLS	
A DIMENSION WITHOUT AN INSPECTION REPORT SYMBOL DOES NOT REQUIRE INSPECTION. IT MAY BE CONTROLLED ON THE INDIVIDUAL COMPONENT DRAWING.	TOTAL NO OF INSPECTIONS REQUIRED	NO MISSING SYMBOL NUMBER	
	9		
	LAST NO. USED	8	

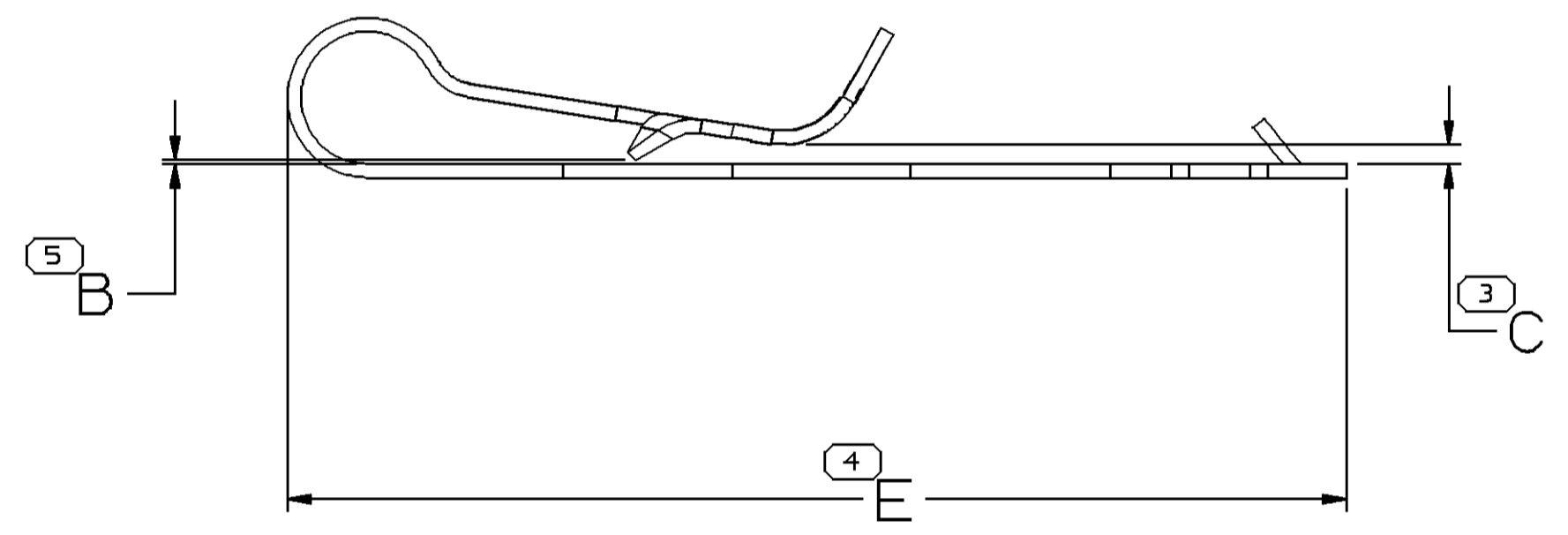
DWS STATUS						REVISION HISTORY		AUTH		DR		APVD	
DATE	STG	REV	N/P	CHG	ZONE	DATE	REV	BY	CHK	DATE	REV	BY	CHK
31NO02	R	01	-	-	-					231141	ESP	EAR	FR
05DE02	R	02	-	-	-					234426	LEG	GEB	FR
28DE03	R	03	-	-	-					235935	LEG	GEB	FR
01JL04	R	04	-	-	-					256623	JBD	FRG	SAN
25OC04	R	05	-	-	-					260600	ESH	AUG	TP
27JA05	R	06	-	-	-					263964	RTV	JAA	TP
19OC05	R	07	-	-	-					273757	JTZ	JAA	P6D
19OC05	R	08	-	-	-					273247	JOA	FRG	P6D
07DE05	R	09	-	-	-					275444	RMG	FRG	TP
23JA14	R	10	-	-	-					425291	JVR	JVM	SJS



2X B
2X R.2.54 BARB RELIEF NOTCH OPTIONAL (ONLY FOR PART No 15439460)

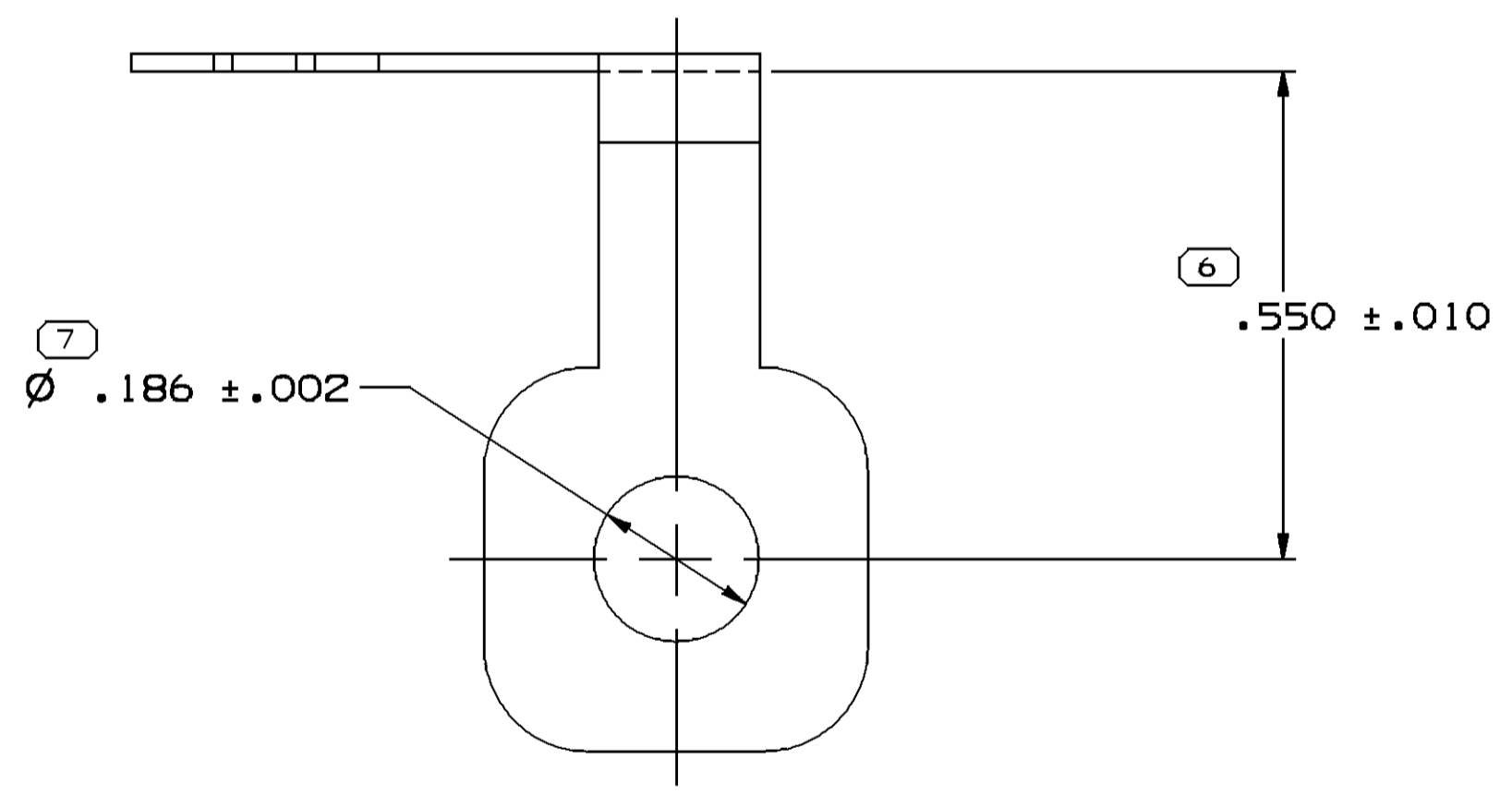
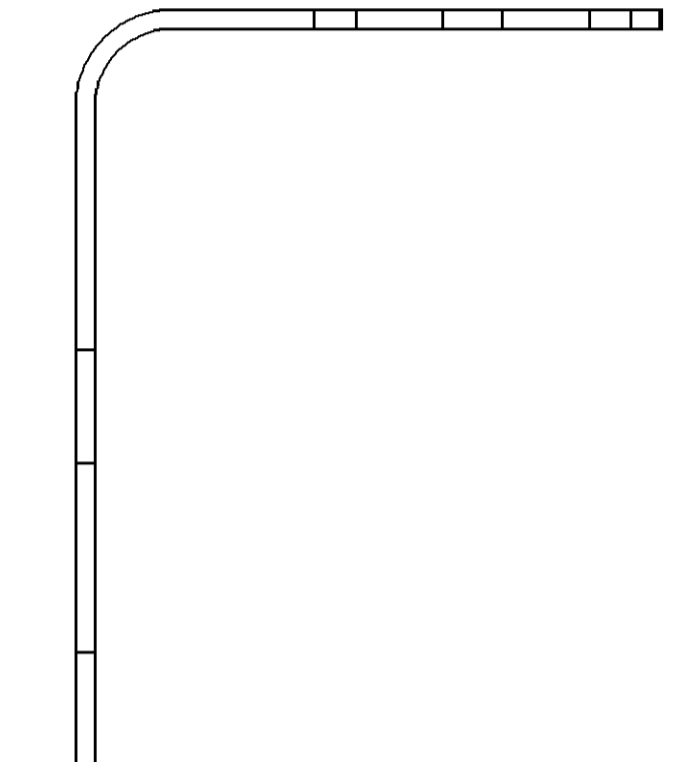
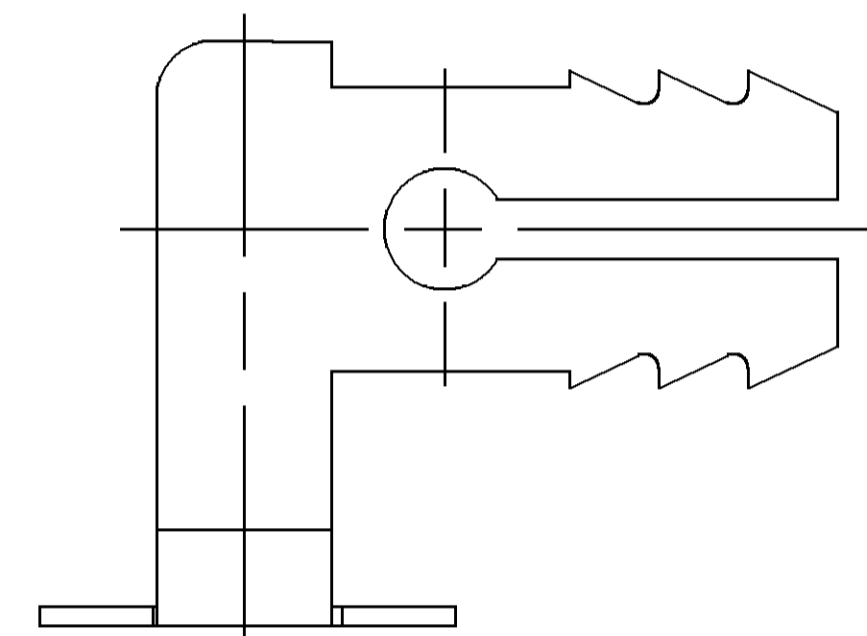
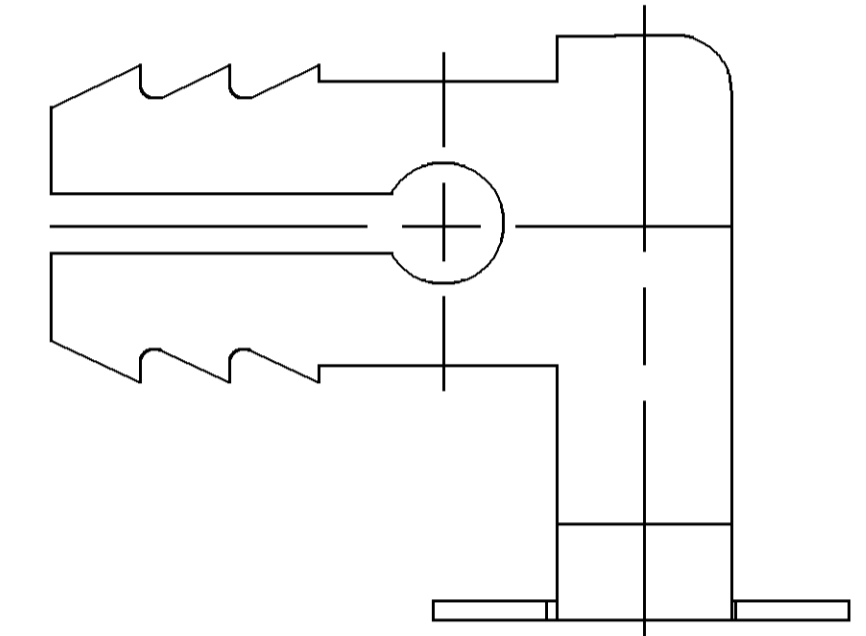
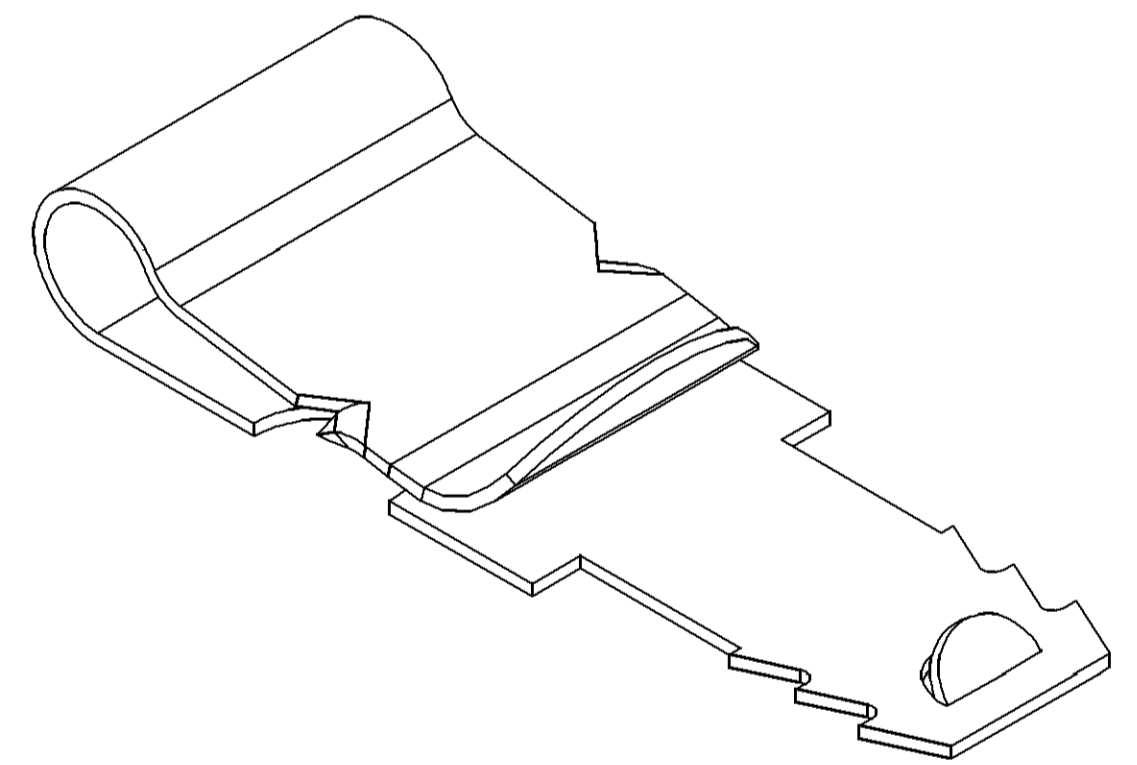


BLANK VIEW
TYPE 904

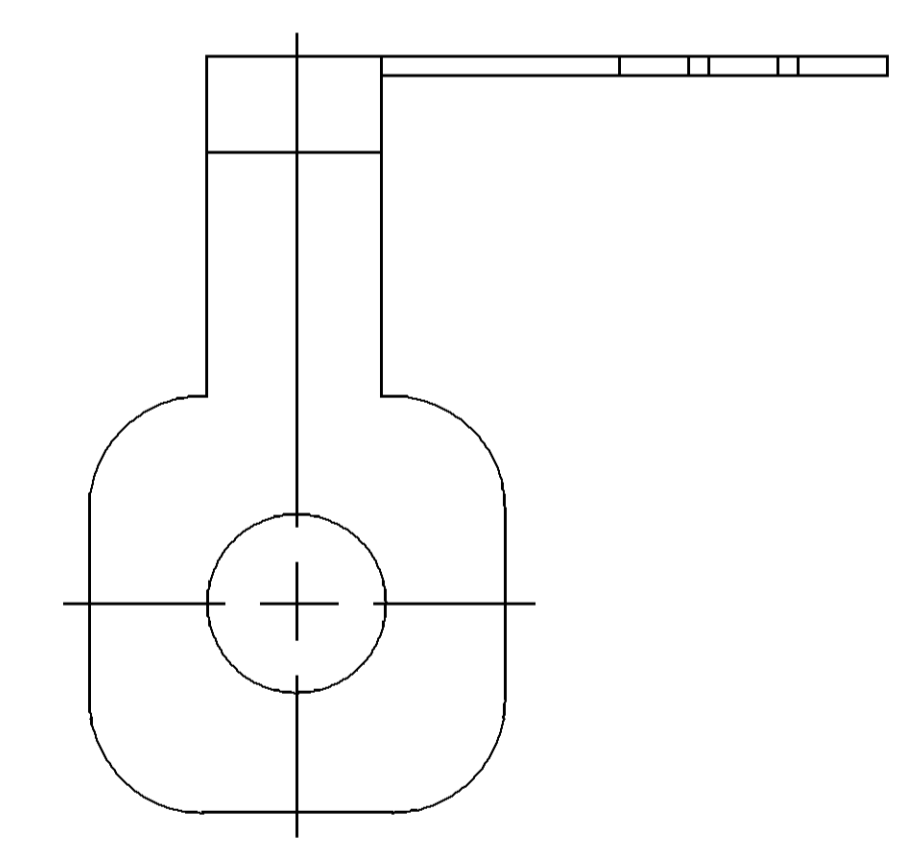


2 FLAT TO .025 MAX 12045817, 12084241, 15495831 AND 15495832 ONLY

TYPE 901



TYPE 902



TYPE 903
SAME AS TYPE 902
EXCEPT AS SHOWN

NOTES

- UNLESS OTHERWISE SPECIFIED AND/OR INDICATED: DIMENSIONS ARE TO FACE OF VIEW SHOWN AND AUTOMATICALLY ROUNDED BY COMPUTER FOR INSPECTION (SEE MATH MODEL FOR PRECISE DIMENSIONS). FOR ALL OTHER DIMENSIONS NOT SHOWN BUT REQUIRED FOR TOOL BUILD, SEE MATH MODEL FOR PRECISE TOOL PATH DATA.
- A R .015 IS PERMISSIBLE ON ALL SHARP CORNERS UNLESS OTHERWISE SPECIFIED. ALL LOCKING FEATURES MUST HAVE SHARP CORNERS.
- PROCESS OPERATIONS TO BE PERFORMED IN SEQUENCE SHOWN IN CHART.
- VISIBLE CRACKS ARE NOT PERMISSIBLE.
- MISALIGNMENT OF PART CAN VARY ONLY 2° MAX FROM 90° CENTERLINES AFTER FORMING (TYPE 901 ONLY).

PROCESS NOTES:

- HEAT TREAT TO ROCKWELL "15N" 83-86
- HEAT TREAT TO ROCKWELL "45N" 49-55
- ZINC PLATE POS 1065-15 (GM 4342 M CODE 10UB) THEN IMMEDIATELY RELIEVE HYDROGEN EMBRITTLEMENT IF PRESENT, FOR HOURS AT 190°C (375°F) TO 232°F (450° C) PER POS 1253 (GM-4342-M)
- ZINC PLATE POS 1065-15 (GM 4342 M CODE 10UB) THEN IMMEDIATELY RELIEVE HYDROGEN EMBRITTLEMENT IF PRESENT, FOR HOURS AT 190°C (375°F) TO 232°F (450° C) PER POS 1253 (GM-4342-M). THE YELLOW CHROMATE PER POS 1065-B-15 (GM 4342 M CODE 10D24)
- BLACK PHOSPHATE PLATE PER GM 6174-M. PART MUST NOT BE OILY TO THE TOUCH.
- ZINC PLATE (CLEAR CHROMATE) PER DX551219-P (8K72/24)
- PLATE PER DX551245-P ZINC WITH CLEAR TRIVALENT CHROME AND TOPCOAT.
- PLATE PER DX551318-P ZINC NICKEL WITH CLEAR TRIVALENT CHROME AND TOPCOAT.

LINE DRAWN THROUGH A PART NUMBER INDICATES THAT PHYSICAL PARTS ARE NOT AVAILABLE FOR ORDERING.	
PART NUMBERS THAT DO NOT HAVE A LINE PRESENT INDICATE THAT PHYSICAL PARTS ARE AVAILABLE FOR ORDERING.	
CONTACT DELPHI SALES TO ASSURE AVAILABILITY OF PARTS.	
DELPHI SALES TO ASSURE AVAILABILITY OF PARTS.	
DWG TYPE	PART DRAWING
TITLE	
VOLUME (OMP)	DISTR CODE
UNLESS OTHERWISE SPECIFIED	
THIS DOCUMENT IS IN ACCORDANCE WITH ASME Y14.5M-1994 AS MODIFIED BY THE GM GLOBAL DIMENSIONING AND TOLERANCING HANDBOOK - 1997. ALL GEOMETRIC TOLERANCES AND RELATED DATUMS APPLY UNLESS OTHERWISE SPECIFIED. THIS DOCUMENT IS THE PROPERTY OF DELPHI CORPORATION AND IS NOT TO BE REPRODUCED OR TRANSMITTED IN ANY FORM OR BY ANY MEANS, ELECTRONIC OR MECHANICAL, INCLUDING PHOTOCOPYING, RECORDING, OR BY ANY INFORMATION STORAGE AND RETRIEVAL SYSTEM, WITHOUT EXPRESS PERMISSION IN WRITING FROM DELPHI CORPORATION.	
REFERENCE	

DELPHI
DELPHI PACKARD ELECTRICAL/ELECTRONIC ARCHITECTURE
WARREN, OH
COPYRIGHT 1987 DELPHI CORPORATION AND/OR ITS AFFILIATES. ALL RIGHTS RESERVED.
THIS DRAWING IS THE PROPERTY OF DELPHI CORPORATION AND IS NOT TO BE REPRODUCED OR TRANSMITTED IN ANY FORM OR BY ANY MEANS, ELECTRONIC OR MECHANICAL, INCLUDING PHOTOCOPYING, RECORDING, OR BY ANY INFORMATION STORAGE AND RETRIEVAL SYSTEM, WITHOUT EXPRESS PERMISSION IN WRITING FROM DELPHI CORPORATION.

DR	DATE
APV01 E. MIZER	04JUN87
APV02 J. COLDSNOW	23JUL87
APV03 A. HERRMANN	20AUG87
APV04	
APV05	

SUBSTANCES OF CONCERN AND RECYCLED CONTENT, PER DELPHI (3944901)

SEE CHART

DRAWING NUMBER
08900009

SIZE A0 SCALE 5:1 FRM NO 1 OF 2 SHEET NO 9 OF 9 STG REV N/P R 10

PART NO	REV/N/P	MAT'L SIZE	MAT'L SPEC	PROCESS NOTES	PART NO	REV/N/P	PROCESS NOTE	TYPE	APPLICABLE STOCK THK	STAMP	B	C	E
-	-	.0164 X .600	SAE 1050	-	15495832	01 AC	1.8	901	.072 - .031	-	.005	.023 ± .023	1.25
-	-	.0164 X .600	SAE 1050	-	15495831	01 AC	1.7	901	.072 - .031	-	.005	.023 ± .023	1.25
-	-	.0164 X .600	M5025514	-	15439460	01 AD	1.6	904	.118 - .138	-	.070 ± .020	.112 ± .020	1.25
-	-	.0164 X .600	SAE 1050	-	12084241	B1 -	1.5	901	.072 - .031	-	.005	.023 ± .023	1.25
-	-	.020 THK	SAE 1050	-	12065807	B -	2.4	903	-	-	-	-	-
-	-	.020 THK	SAE 1050	-	12065806	B -	2.3	902	-	-	-	-	-
-	-	.0164 X .600	SAE 1050	-	12045817	C1 -	1.4	901	.072 - .031	-	.005	.023 ± .023	1.25

1 PROCESS SENSITIVE DIMENSION	
DIMENSIONS ENCLOSED IN () INDICATE REFERENCE DIMENSIONS AND NO TOLERANCE LIMITS ARE ESTABLISHED	
DIMENSIONAL RANGE (MM)	CHART IS
FROM 0	> .750
TO .750	> 1.250
	> 2.500
	> 4.000
	> 6.000
	> 8.000
	> 10.000
	> 15.000
	> 20.000
	> 25.000
	> 30.000
	> 35.000
	> 40.000
	> 45.000
	> 50.000
	> 55.000
	> 60.000
	> 65.000
	> 70.000
	> 75.000
	> 80.000
	> 85.000
	> 90.000
	> 95.000
	> 100.000
	> 105.000
	> 110.000
	> 115.000
	> 120.000
	> 125.000
	> 130.000
	> 135.000
	> 140.000
	> 145.000
	> 150.000
	> 155.000
	> 160.000
	> 165.000
	> 170.000
	> 175.000
	> 180.000
	> 185.000
	> 190.000
	> 195.000
	> 200.000
	> 205.000
	> 210.000
	> 215.000
	> 220.000
	> 225.000
	> 230.000
	> 235.000
	> 240.000
	> 245.000
	> 250.000
	> 255.000
	> 260.000
	> 265.000
	> 270.000
	> 275.000
	> 280.000
	> 285.000
	> 290.000
	> 295.000
	> 300.000
	> 305.000
	> 310.000
	> 315.000
	> 320.000
	> 325.000
	> 330.000
	> 335.000
	> 340.000
	> 345.000
	> 350.000
	> 355.000
	> 360.000
	> 365.000
	> 370.000
	> 375.000
	> 380.000
	> 385.000
	> 390.000
	> 395.000
	> 400.000
	> 405.000
	> 410.000
	> 415.000
	> 420.000
	> 425.000
	> 430.000
	> 435.000
	> 440.000
	> 445.000
	> 450.000
	> 455.000
	> 460.000
	> 465.000
	> 470.000
	> 475.000
	> 480.000
	> 485.000
	> 490.000
	> 495.000
	> 500.000
	> 505.000
	> 510.000
	> 515.000
	> 520.000
	> 525.000
	> 530.000
	> 535.000
	> 540.000
	> 545.000
	> 550.000
	> 555.000
	> 560.000
	> 565.000
	> 570.000
	> 575.000
	> 580.000
	> 585.000
	> 590.000
	> 595.000
	> 600.000
	> 605.000
	> 610.000
	> 615.000
	> 620.000
	> 625.000
	> 630.000
	> 635.000
	> 640.000
	> 645.000
	> 650.000
	> 655.000
	> 660.000
	> 665.000
	> 670.000
	> 675.000
	> 680.000
	> 685.000
	> 690.000
	> 695.000
	> 700.000
	> 705.000
	> 710.000
	> 715.000
	> 720.000
	> 725.000
	> 730.000
	> 735.000
	> 740.000
	> 745.000
	> 750.000
	> 755.000
	> 760.000
	> 765.000
	> 770.000
	> 775.000
	> 780.000
	> 785.000
	> 790.000
	> 795.000
	> 800.000
	> 805.000
	> 810.000
	> 815.000
	> 820.000
	> 825.000
	> 830.000
	> 835.000
	> 840.000
	> 845.000
	> 850.000
	> 855.000
	> 860.000
	> 865.000
	> 870.000
	> 875.000
	> 880.000
	> 885.000
	> 890.000
	> 895.000
	> 900.000
	> 905.000
	> 910.000
	> 915.000
	> 920.000
	> 925.000
	> 930.000
	> 935.000
	> 940.000
	> 945.000
	> 950.000
	> 955.000
	> 960.000
	> 965.000
	> 970.000
	> 975.000
	> 980.000
	> 985.000
	> 990.000
	> 995.000
	> 1000.000

THIRD ANGLE PROJECTION	DO NOT SCALE
USE MATH DATA	