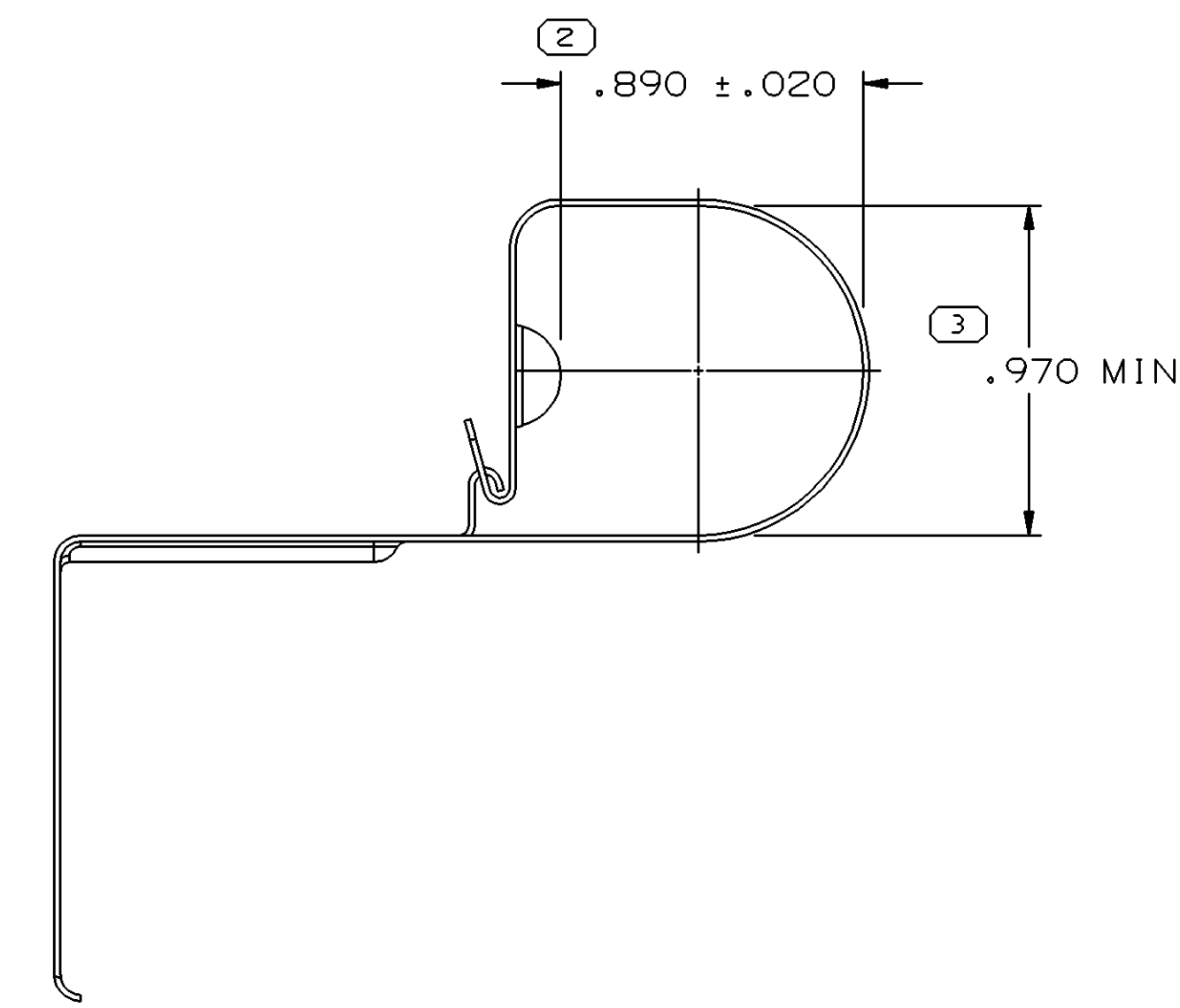
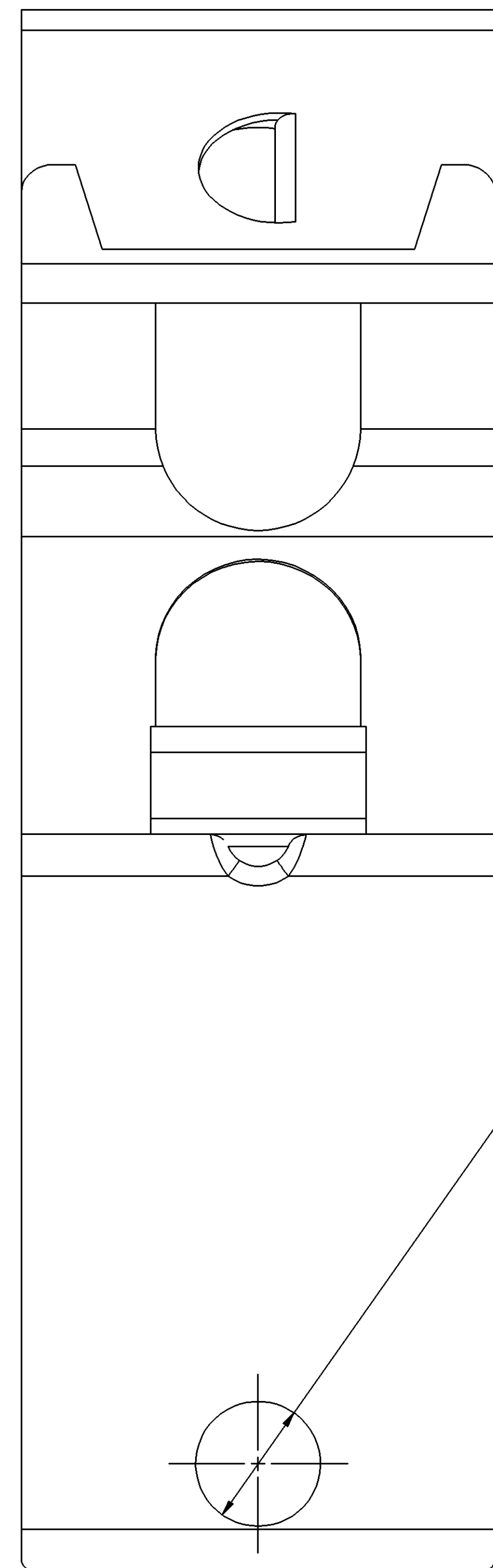
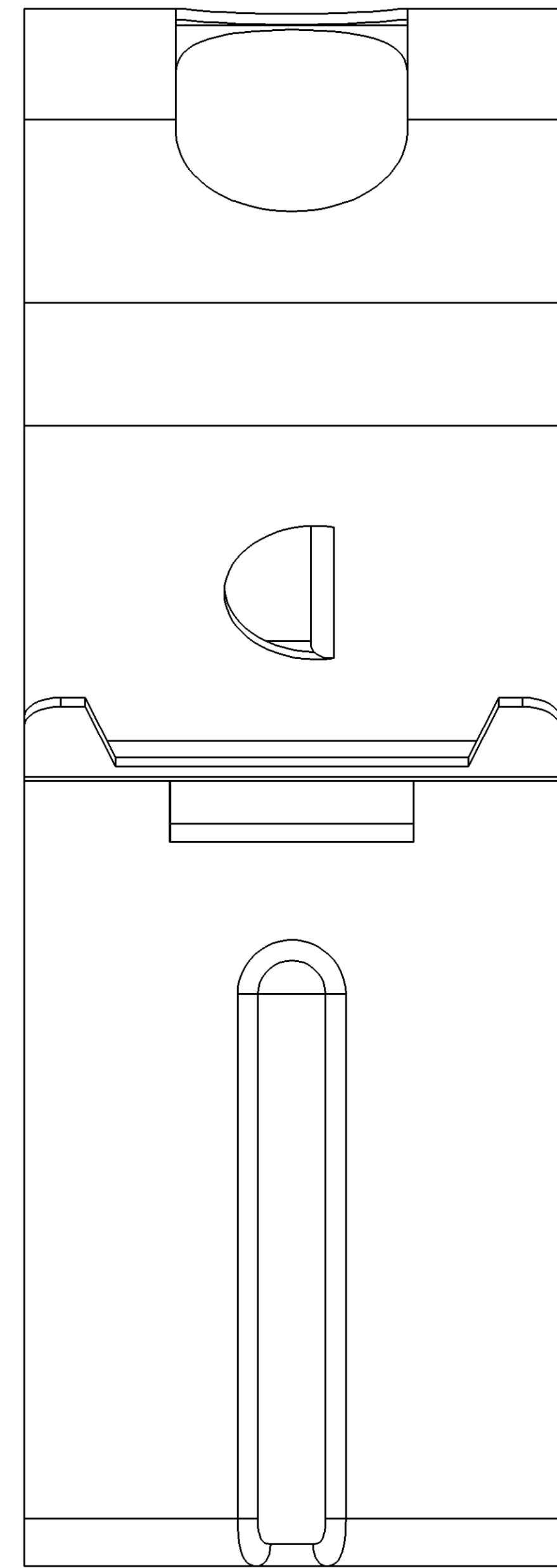
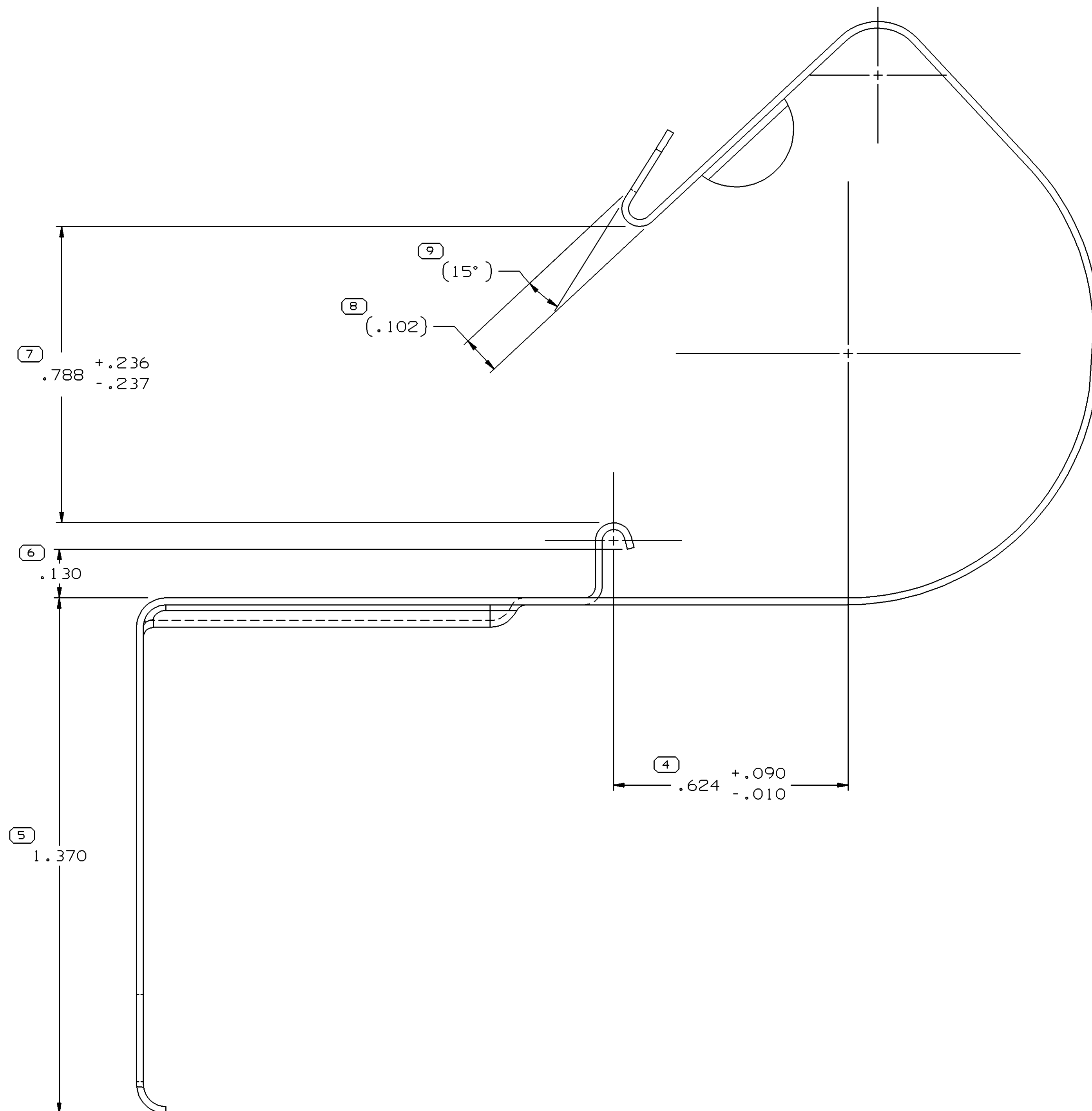


SYMBOL DEFINITION		TOTAL NO OF INSPECTIONS REQUIRED	MISSING SYMBOLS
A DIMENSION WITHOUT AN INSPECTION REPORT SYMBOL DOES NOT REQUIRE INSPECTION. IT MAY BE CONTROLLED ON THE INDIVIDUAL COMPONENT DRAWING.		9	NO MISSING SYMBOL NUMBER
		LAST NO. USED	9

DWO STATUS				REVISION HISTORY				AUTH	DR	APVD
DATE	STG	REV	N/P	CHG	ZONE					
14JUN04	R	01	-	-		ALL PARTS - REDRAWN TO PD: 12034300 - OBSOLETE AND ADDED NOTE 2	253207	JBD	JAA	SAN
04AUG04	R	02	-	-		15495900-01 - RELEASED AND ADDED PROCESS NOTES 4, 5 & 6	257561	JBD	JAA	SAN
28OCT05	R	03	-	-		08917423 & 12088007 - OBSOLETE	273406	JTZ	JAA	P60



CLOSED VIEW OF CLAMP
SCALE 2:1

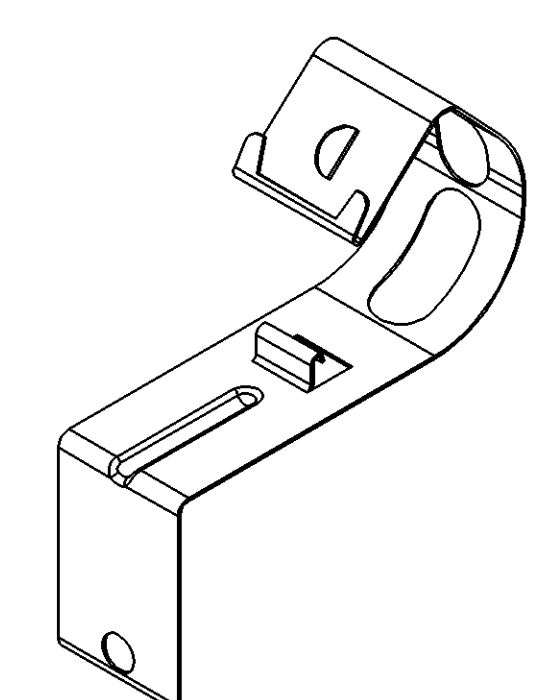


NOTES

- UNLESS OTHERWISE SPECIFIED AND/OR INDICATED: DIMENSIONS ARE TO FACE OF VIEW SHOWN AND AUTOMATICALLY ROUNDED BY COMPUTER FOR INSPECTION (SEE MATH MODEL FOR PRECISE DIMENSIONS). FOR ALL OTHER DIMENSIONS NOT SHOWN BUT REQUIRED FOR TOOL BUILD, SEE MATH MODEL FOR PRECISE TOOL PATH DATA.
- OBSOLETE PART(S) CONTAINS A HEXAVALENT CHROME COATING. DO NOT USE THIS PART ON NEW APPLICATIONS. HEXAVALENT CHROME IS A BANNED SUBSTANCE. IF THIS PART IS REQUIRED FOR CURRENT OR FUTURE BUSINESS OR FOR SERVICE REQUIREMENTS, CONTACT THE PRODUCT LINE ENGINEER OR MATERIALS ENGINEERING TO GET A NEW PART THAT IS FREE FROM HEXAVALENT CHROME. EXISTING INVENTORY OF THIS PART MAY BE USED UNTIL JULY 1, 2007 FOR SERVICE REQUIREMENTS.

PROCESS NOTES

- TEMPER TO ROCKWELL 15N 83-86.
- ZINC PLATE, RELIEVE HYDROGEN EMBRITTLEMENT FOR FOUR HOURS AT 375°F TO 450°F, THEN GOLD CHROMATE PER GM-4342-M CODE 10 D 24.
- PHOSPHATE/ZINC PLATE PER GM 6111-M (BLACK).
- PLATE PER DX551245-P ZINC WITH CLEAR TRIVALENT CHROME & TOPCOAT.
- PLATE PER DX551318-P ZINC NICKEL WITH CLEAR TRIVALENT CHROME & TOPCOAT.
- MUST WITHSTAND 400° HRS MINIMUM TO RED RUST IN NEUTRAL SALT FOG.



PART NO	REV	N/P	STATUS	φ A	PROCESS NOTES
15495901	01	-	-	.406	1,5,6
15495900	01	-	-	.406	1,4
12088007	A1	-	OBSOLETE	.406	1,3
12034300	B1	-	OBSOLETE	.232 ± .004	1,2
08917423	A1	-	OBSOLETE	.406	1,2

DWO TYPE		PART DRAWING	
STYLE	D		
VOLUME (CWP)	DISTR CODE		
UNLESS OTHERWISE SPECIFIED			
THIS DOCUMENT IS IN ACCORDANCE WITH ASME Y14.5M-1994 AS AMENDED BY THE 2003 ADDENDUM. DIMENSIONS AND TOLERANCES UNLESS OTHERWISE SPECIFIED ARE IN INCHES.			
DIMENSIONAL RANGE (IN)		CHART	THIRD ANGLE PROJECTION
FROM	TO		DO NOT SCALE
0	>.500	J	USE MATH DATA
TOLERANCE UNLESS OTHERWISE SPECIFIED		ANGULAR TOLERANCE 12°	
±.005		±.010	

DELPHI
DELPHI PACKARD ELECTRIC SYSTEMS
WARREN, OH

DR	DATE
APVD1 J. R. BARRIENTOS	150C04
APVD2 J. S. ALVARADO	180C04
APVD3 SAMUEL NORLING	210C04
APVD4	
APVD5	

SUBSTANCES OF CONCERN AND RECYCLED CONTENT PER DELPHI 10949001

MATERIAL: .0180 THK SAE-1050 CR STEEL

DRAWING NAME: TAXI MOUN CLAMP CDT 19MM ANGLED

DRAWING NUMBER: 12048485

SIZE A0 SCALE 5:1 FRAME NO 1 OF 1 SHEET NO 1 OF 1 STG REV N/P 03