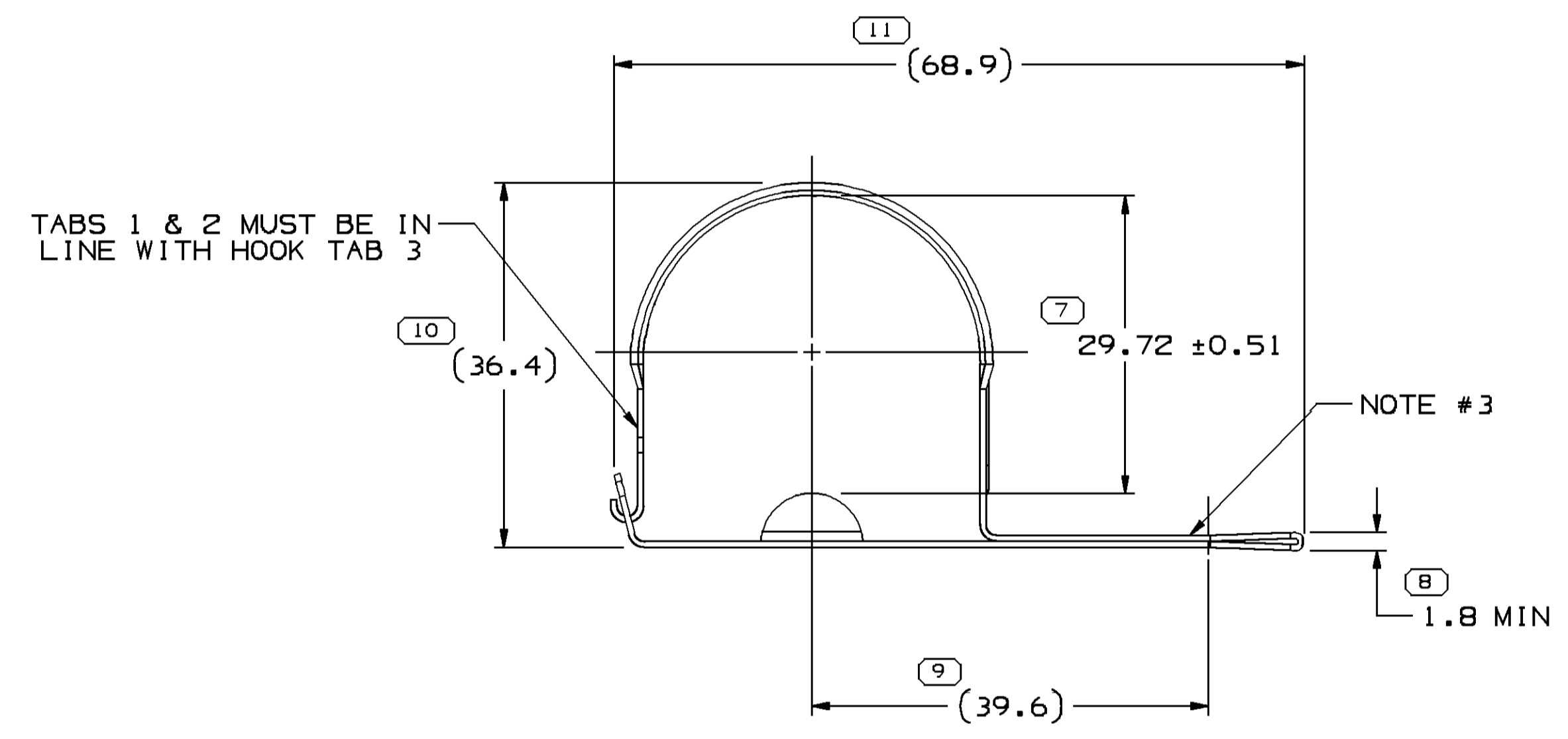
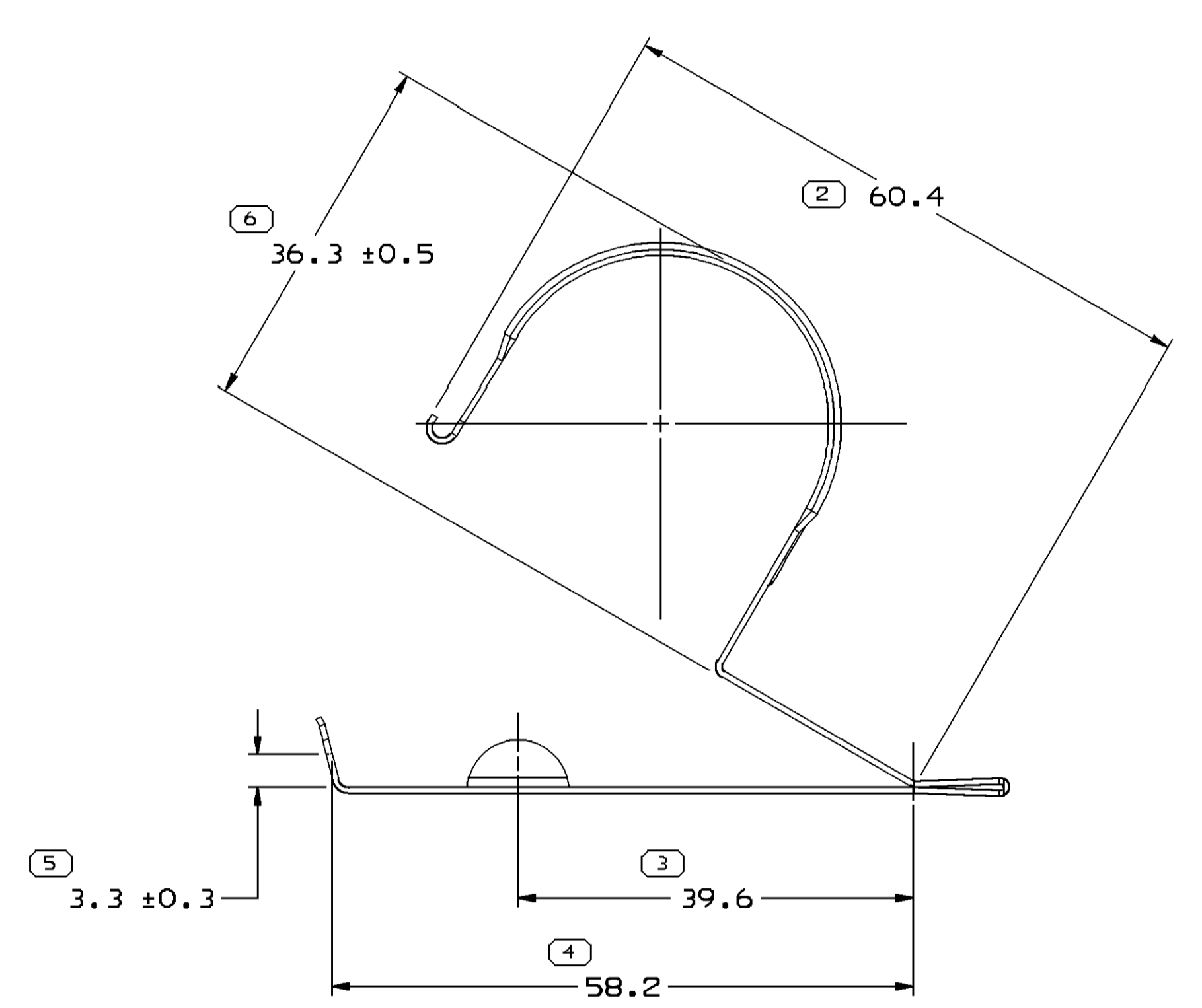
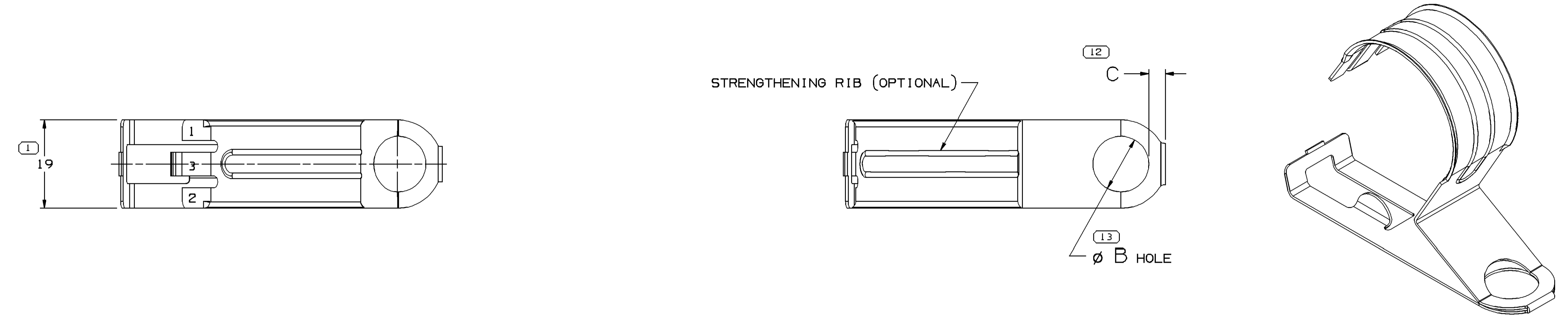


SYMBOL DEFINITION		TOTAL NO OF INSPECTIONS REQUIRED	MISSING SYMBOLS
A DIMENSION WITHOUT AN INSPECTION REPORT SYMBOL DOES NOT REQUIRE INSPECTION. IT MAY BE CONTROLLED ON THE INDIVIDUAL COMPONENT DRAWING.		13	NO MISSING SYMBOL NUMBER
	LAST NO. USED	13	

DWG STATUS		ZONE		REVISION HISTORY		AUTH	DR	APVD	APVD
DATE	STG	REV	N/P	CHG					
02A004	R	01	-	-	12015679, 12047657, 12078080 & 12089328 - WERE SEPARATE DRAWINGS; 15495899 & 15495899 - RELEASED.	257551	ECB	AUG	TP
130C05	R	02	-	-	15499838 - WAS SEPARATE DWG	273456	EVJ	AUG	TP
280C05	R	03	-	-	12015679, 12047657 & 12089328 - OBSOLETE	273406	JTZ	JAA	P6D
26JA06	R	04	-	-	15499838 - DIM "C" WAS 3.56	276545	BLG	FRG	TP
13AP06	R	05	-	-	13580723 AND 13580724 - RELEASED; ALL ACTIVE PARTS - ADDED CONDUIT SIZE & MAT'L SPEC TO CHART	278775	RMG	JAA	TP
06N014	R	06	-	-	15495899, 15495891 & 12078080 - ADDED "PN TO USE" NOTE & ON CHART	428095	IMF	RLG	RLG



CLOSED VIEW OF CLAMP

PROCESS NOTES

- BLACK ZINC PLATE PER GM-4342-M CODE 20L24.
- ZINC PLATE AND GOLD CHROMATE TREAT PER GM-4342-M CODE 10D24 (POS-1065B-15).
- PHOSPHATE/ZINC PLATE PER GM-6111-M (BLACK).
- PLATE PER GM-6173-M (BLACK).
- PLATE PER DX551245-P ZINC WITH CLEAR TRIVALENT CHROME & TOPCOAT.
- PLATE PER DX551318-P ZINC NICKEL WITH CLEAR TRIVALENT CHROME.
- PLATING MUST WITHSTAND 400 HRS., MINIMUM TO RED RUST IN NEUTRAL SALT FOG.

NOTES

- UNLESS OTHERWISE SPECIFIED AND/OR INDICATED: DIMENSIONS ARE TO FACE OF VIEW SHOWN AND AUTOMATICALLY ROUNDED BY COMPUTER FOR INSPECTION (SEE MATH MODEL FOR PRECISE DIMENSIONS). FOR ALL OTHER DIMENSIONS NOT SHOWN BUT REQUIRED FOR TOOL BUILD, SEE MATH MODEL FOR PRECISE TOOL PATH DATA.
- 0.15 HIGH BURR IS PERMISSIBLE EXCEPT AS NOTED.
- HOLE MUST ACCEPT A MINIMUM (SEE CHART) DIAMETER PIN WHEN CLAMP IS CLOSED.
- 15499838 RECOMMENDED PN TO USE. COMMUNIZING ALL FEATURES WITH PERFORMANCE ENHANCEMENTS PER ENVIRONMENTAL TESTING'S.

PART NO	REV	N/P	MATERIAL SPECIFICATION	PROCESS NOTE	B	STUD SIZE	C _{0.33}	HOLE Ø	CONDUIT SIZE (MM)	RECOMMENDED PN (SEE NOTE)
13580723	01	-	M0929XXX SAE 1008-1010 STRIP STEEL #3 TEMPER (1/4 HD) WITH NIZn PLUS PREPLATE	7	12.7 ± 0.15	M12	3.19	12.55	25	-
13580724	01	-	M0929XXX SAE 1008-1010 STRIP STEEL #3 TEMPER (1/4 HD) WITH NIZn PLUS PREPLATE	7	11.96 ± 0.12	7/16	3.56	11.84	25	-
15499838	01	AC	0.6 THK. #3 TEMPER 1008-1010 C.R. STEEL	5	12.7 ± 0.15	M12	3.19	12.55	25	-
15495899	01	AB	0.6 THK. #3 TEMPER 1008-1010 C.R. STEEL	5	11.96 ± 0.12	7/16	3.56	11.84	25	4
15495891	01	AB	0.6 THK. #3 TEMPER 1008-1010 C.R. STEEL	6,7	11.96 ± 0.12	7/16	3.56	11.84	25	4
12089328	B1	-	0.6 THK. #3 TEMPER 1008-1010 C.R. STEEL	2	12.7 ± 0.15	M12	3.19	12.55	25	-
12078080	A2	-	0.6 THK. #3 TEMPER 1008-1010 C.R. STEEL	3	11.96 ± 0.12	7/16	3.56	11.84	25	4
12047657	A1	-	0.6 THK. #3 TEMPER 1008-1010 C.R. STEEL	1	11.96 ± 0.12	7/16	3.56	11.84	25	-
12015679	B1	-	0.6 THK. #3 TEMPER 1008-1010 C.R. STEEL	4	11.96 ± 0.12	7/16	3.56	11.84	25	-

DELPHI
DELPHI PACKARD ELECTRICAL/ELECTRONIC ARCHITECTURE
WARREN, OH
COPYRIGHT 2004 DELPHI CORPORATION AND/OR ITS AFFILIATES. ALL RIGHTS RESERVED.
THIS DRAWING IS THE PROPERTY OF DELPHI CORPORATION AND CONTAINS DELPHI CONFIDENTIAL INFORMATION. THE REPRODUCTION, DISTRIBUTION AND UTILIZATION OF THIS DOCUMENT OR ITS CONTENTS OR DATA, AS WELL AS COMMUNICATION OF ANY CONTENT TO OTHERS, WITHOUT EXPRESS AUTHORIZATION, IS PROHIBITED.

DATE: 15ND04
OR: E.A. CACHO
APV02: A. UGALDE G. 16ND04
APV03: THOMAS PERSSON 18ND04
APV04:
APV05:

THIS DOCUMENT IS IN ACCORDANCE WITH ASME Y14.5M-1994 AS MODIFIED BY THE 2003 SUPPLEMENT AND TELEPHONIC ADDENDUM-2001. SEPARATE PATTERNS OF FEATURES MAY BE SHOWN SEPARATELY, REGARDLESS OF DATUM REFERENCES.

ALL DIMENSIONS ARE IN MILLIMETERS

UNLESS OTHERWISE SPECIFIED

DWG TYPE: PART DRAWING

STYLE: ID

VOLUME (OMP): DISTR CODE: D

REFERENCE: REFERENCE

THIRD ANGLE PROJECTION

DO NOT SCALE

USE MATH DATA

DRAWING NUMBER: 12048020

SIZE: A0 SCALE: 2:1 PRIME NO: 1 OF 1 SHEET NO: 1 OF 1 STG: REV: N/P: 06