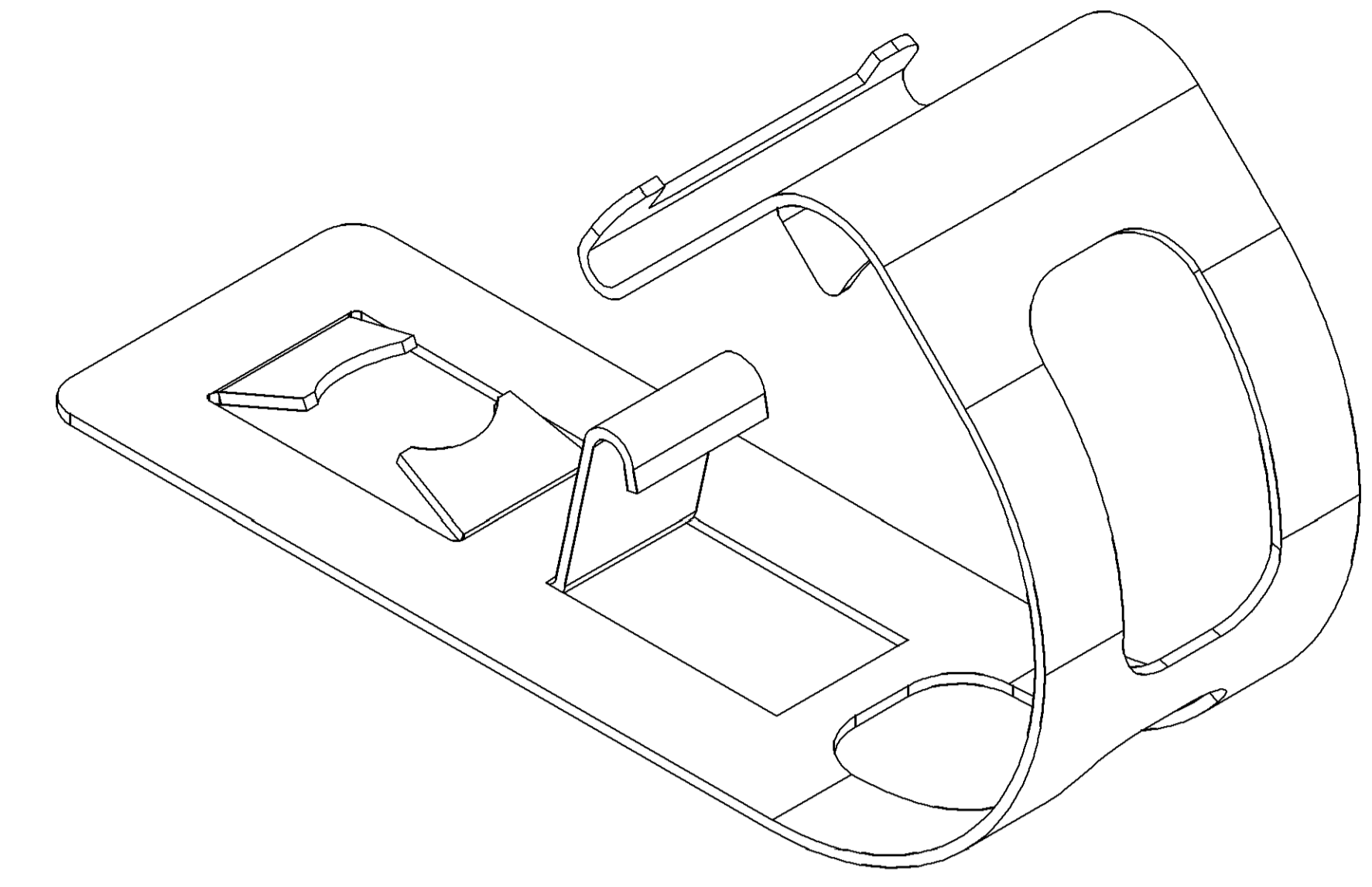
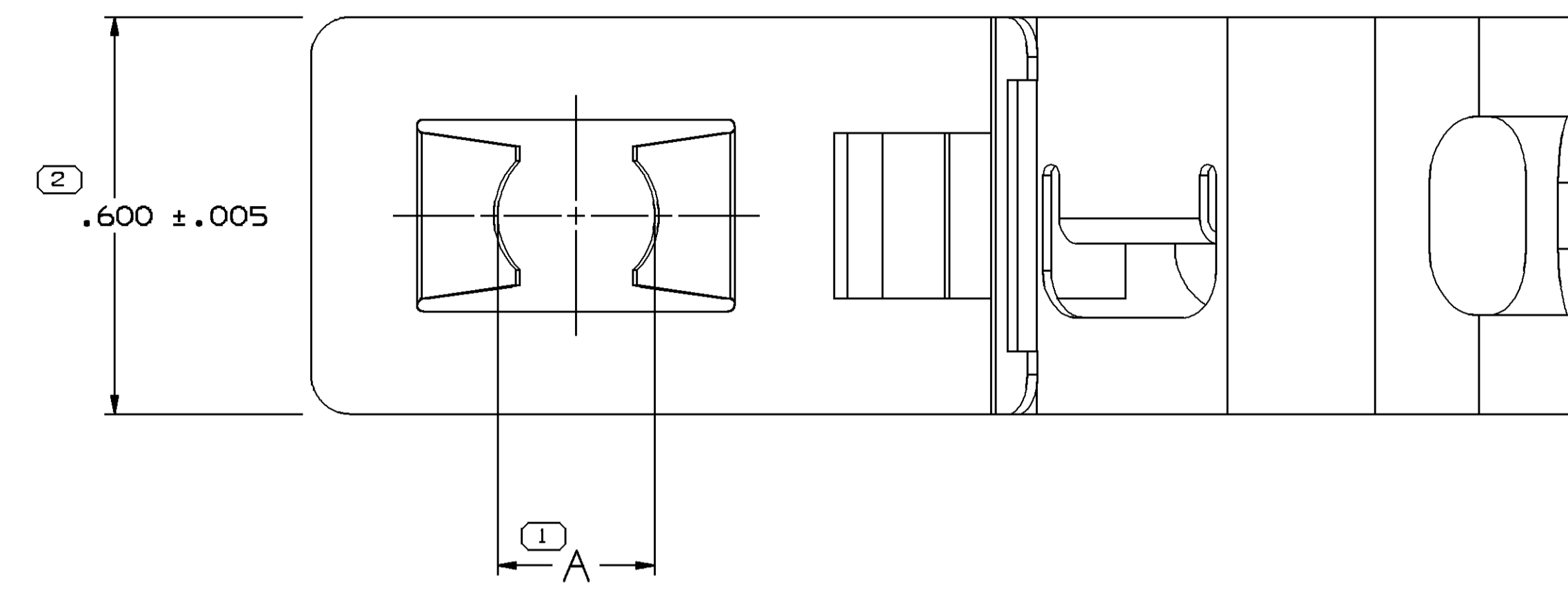
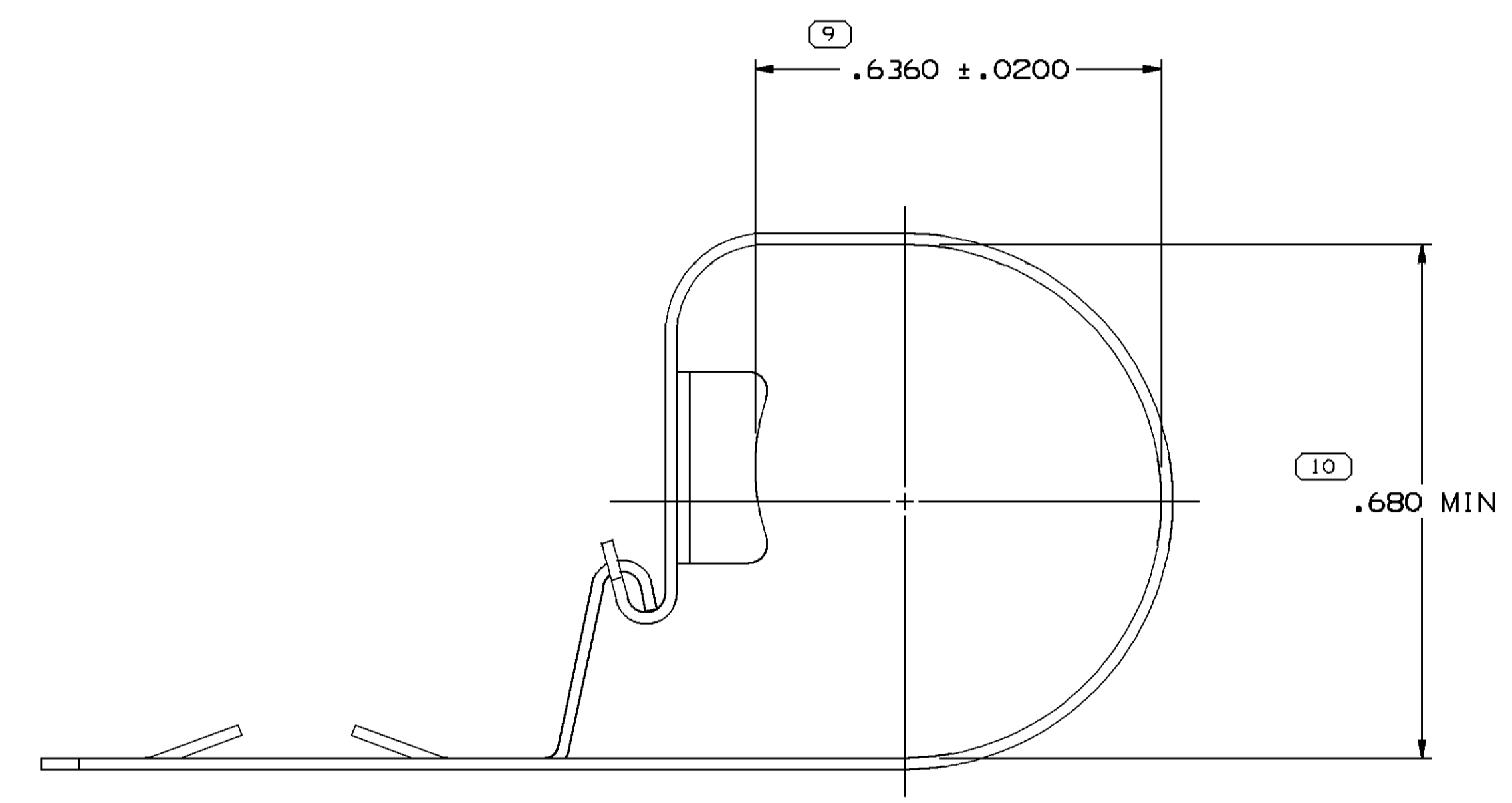
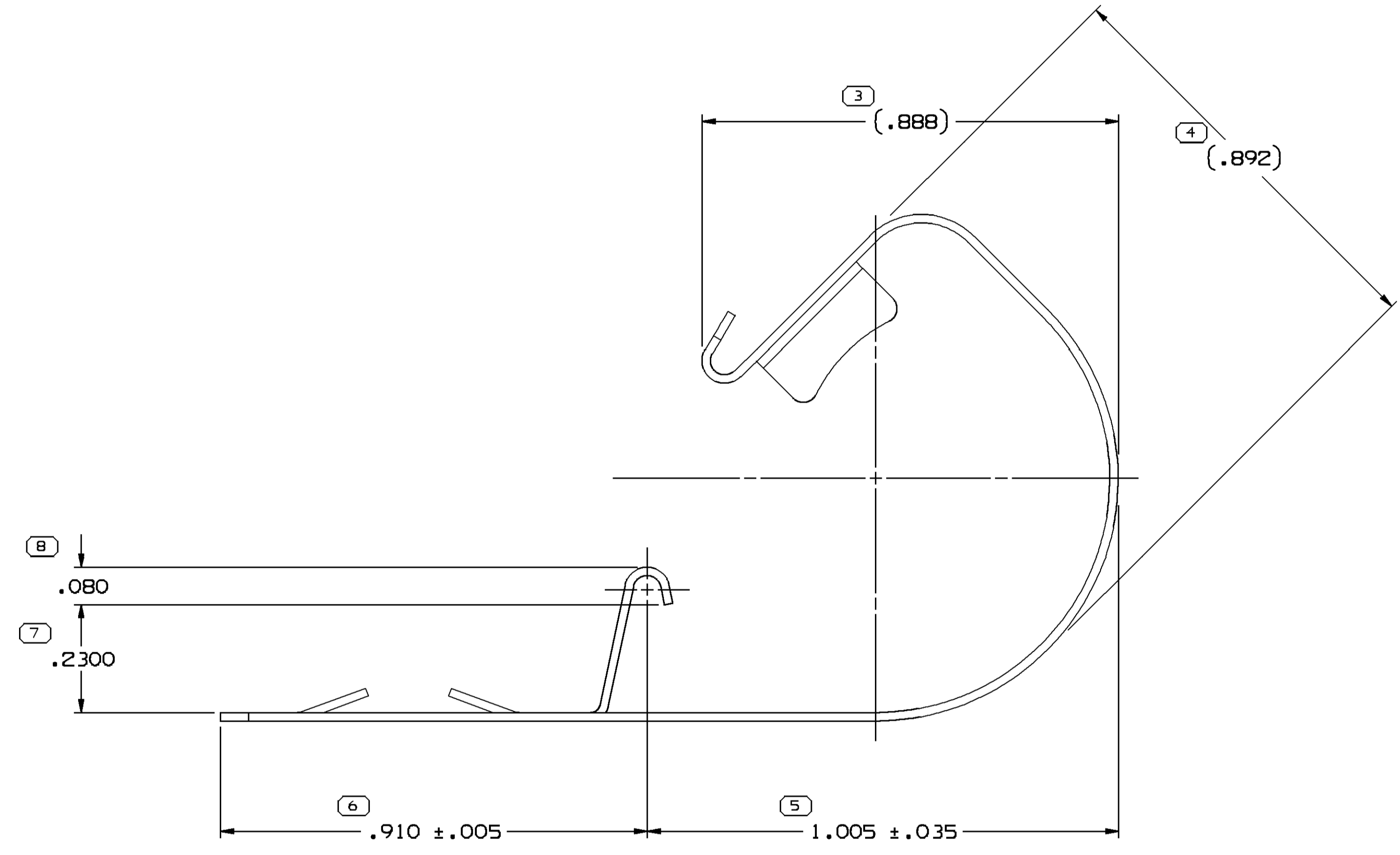


SYMBOL DEFINITION		MISSING SYMBOLS	
A DIMENSION WITHOUT AN INSPECTION REPORT SYMBOL DOES NOT REQUIRE INSPECTION. IT MAY BE CONTROLLED ON THE INDIVIDUAL COMPONENT DRAWING.	TOTAL NO OF INSPECTIONS REQUIRED	NO MISSING SYMBOL NUMBER	
	10		
	LAST NO. USED		
	10		

DWG STATUS				REVISION HISTORY				AUTH	DR	AP/VD	AP/VD
DATE	STG	REV	N/P	CHG	ZONE						
13JAB7	R	-	-	-		08917985 & 12010824 WERE ON SEPARATE "D" SIZE DWGS. - REV. LEVEL REMAINS THE SAME	110972	TLB	FH		
13JAB7	R	-	-	-		12066479 ADDED & RELEASED TO REV "A"	870005	TLB	FH		
19FEB7	R	-	-	-		08917985 - REV. LEVEL ADVANCED TO "C"	112054	MJS	JM		
13MRB7	R	-	-	-		12066479 - "K" DIM. WAS .145 & "L" DIM. WAS .155; NO REV. UPDATE REQ'D.	112462	JK	JC		
07AUB7	R	-	-	-		ALL PARTS - REVISED CONDUIT HOLDING TAB; REV. LEVELS ADV.	114901	JR	JM		
270CB7	R	-	-	-		ALL PARTS - RELOCATED .6560/.6160 WITNESS LINE & ENGLISH STICKER WAS METRIC IN TITLE BLOCK; NO REV. UPDATE REQ'D.	116444	JC	FH		
01JNB9	R	-	-	-		ALL PARTS - REVISED DIMS. & GRAPHICS; NO REV. UPDATE REQ'D.	126969	FH	FH		
04AU04	R	-	-	-		15495906, 15495922 - RELEASED ADDED PROCESS NOTES 5 & 6	257561	AK	SN		
28SE04	R	-	-	-		15499839 - RELEASED	259573	AK	SN		
19N004	R	10	-	-		REDRAWN TO PD	261509	ESH	FRG	TP	
21JN05	R	11	-	-		ALL PARTS - ADDED NOTE 3 AND REVISED DRAWING NAME	269279	RTV	JVM	TP	
280C05	R	12	-	-		12066479 - OBSOLETE	273424	JTV	AUG	P6D	
07N005	R	13	-	-		08917985 - OBSOLETE	274241	JBD	JVM	P6D	
21MR06	R	14	-	-		12010824 - OBSOLETE	278376	QPS	FRG	TP	
11N013	R	15	-	-		33109559 - RELEASED	424604	VHG	RLG	VHG	



TFR-ISO#7
VIEW SCALE DOES NOT
REFLECT ACTUAL PART SIZE



CLOSED VIEW OF CLAMP

NOTES

- UNLESS OTHERWISE SPECIFIED AND/OR INDICATED:
DIMENSIONS ARE TO FACE OF VIEW SHOWN AND AUTOMATICALLY ROUNDED BY COMPUTER FOR INSPECTION (SEE MATH MODEL FOR PRECISE DIMENSIONS). FOR ALL OTHER DIMENSIONS NOT SHOWN BUT REQUIRED FOR TOOL BUILD, SEE MATH MODEL FOR PRECISE TOOL PATH DATA.
- DIMENSIONS OTHER THAN 4 PLACES SHOWN ON THIS DRAWING ARE REFERENCE DIMENSIONS INTENDED FOR FUNCTION AND TOOL DESIGN CRITERIA.
- THIS PART TO ACCEPT 13MM CONDUIT

PROCESS NOTES

- AUSTEMPER TO ROCKWELL 15N 81.5-83.5 (BAINITE MICROSTRUCTURE)
- ZINC PLATE, RELIEVE HYDROGEN EMBRITTELEMENT FOR 4 HOURS AT 375° F TO 450° F THEN GOLD CHROMATE PER GM-4342-M CODE 10D24
- ZINC PLATE, RELIEVE HYDROGEN EMBRITTELEMENT FOR 4 HOURS AT 375° F TO 450° F THEN CLEAR CHROMATE PER GM-4342-M CODE 20K24
- PHOSPHATE/ZINC PLATE PER 6M6111-M (BLACK)
- PLATE PER DX551245-P ZINC WITH CLEAR TRIVALENT CHROME AND TOPCOAT
- PLATE PER DX551318-P ZINC NICKEL WITH CLEAR TRIVALENT CHROME AND TOPCOAT. MUST WITHSTAND 400 HOURS MINIMUM TO RED RUST IN NEUTRAL SALT SPRAY.

PART NO	REV	N/P	PROCESS NOTES	MOUNTING BOLT SIZE	A
33109559	01	-	1,6	M6	.212/.194
15499839	01	AB	1,6	M6	.289/.270
15495922	01	AB	1,5	E 1/4	.242/.224
15495906	01	AB	1,5	M6	.212/.194
12066479	B3	-	1,4	M6	.289/.270
12010824	C3	-	1,3	M6	.212/.194
08917985	D3	-	1,2	E 1/4	.242/.224

DELPHI CORPORATION
TROY, MI 48060
COPYRIGHT 1987 DELPHI CORPORATION AND/OR ITS AFFILIATES. ALL RIGHTS RESERVED.
THIS DRAWING IS THE PROPERTY OF DELPHI CORPORATION AND CONTAINS DELPHI CONFIDENTIAL INFORMATION. THE REPRODUCTION, DISTRIBUTION AND UTILIZATION OF THIS DOCUMENT OR ITS CONTENTS OR BOTH DATA AS WELL AS COMMUNICATION OF ANY CONTENT TO OTHERS, WITHOUT EXPRESS AUTHORIZATION, IS PROHIBITED.

DWG TYPE: PART DRAWING
DISTR CODE: D

UNLESS OTHERWISE SPECIFIED
THIS DOCUMENT IS IN ACCORDANCE WITH ASME Y14.5M-1994 AS MODIFIED BY THE 2003 SUPPLEMENT AND TELEPHONIC ADDENDUM-2001. SEPARATE PATTERNS OF FEATURES MAY BE SHOWN SEPARATELY REGARDLESS OF DATUM REFERENCES.

ALL DIMENSIONS ARE IN INCHES

REFERENCE:

THIRD ANGLE PROJECTION
DO NOT SCALE
USE MATH DATA

DRAWING NAME: TAXI MOUN CLAMP CDT 13MM
DRAWING NUMBER: 12066475

SIZE: A0
SCALE: 5:1
FRAME NO: 1 OF 1
SHEET NO: 1 OF 1
STG: R
REV: 15

PROCESS SENSITIVE DIMENSION		CHART	
DIMENSIONAL RANGE (LIT)	0 TO >500	CHART	J
FROM	0		
TO	500		
TOLERANCE UNLESS OTHERWISE SPECIFIED	±.005		
ANGULAR TOLERANCE ±2°	±.010		