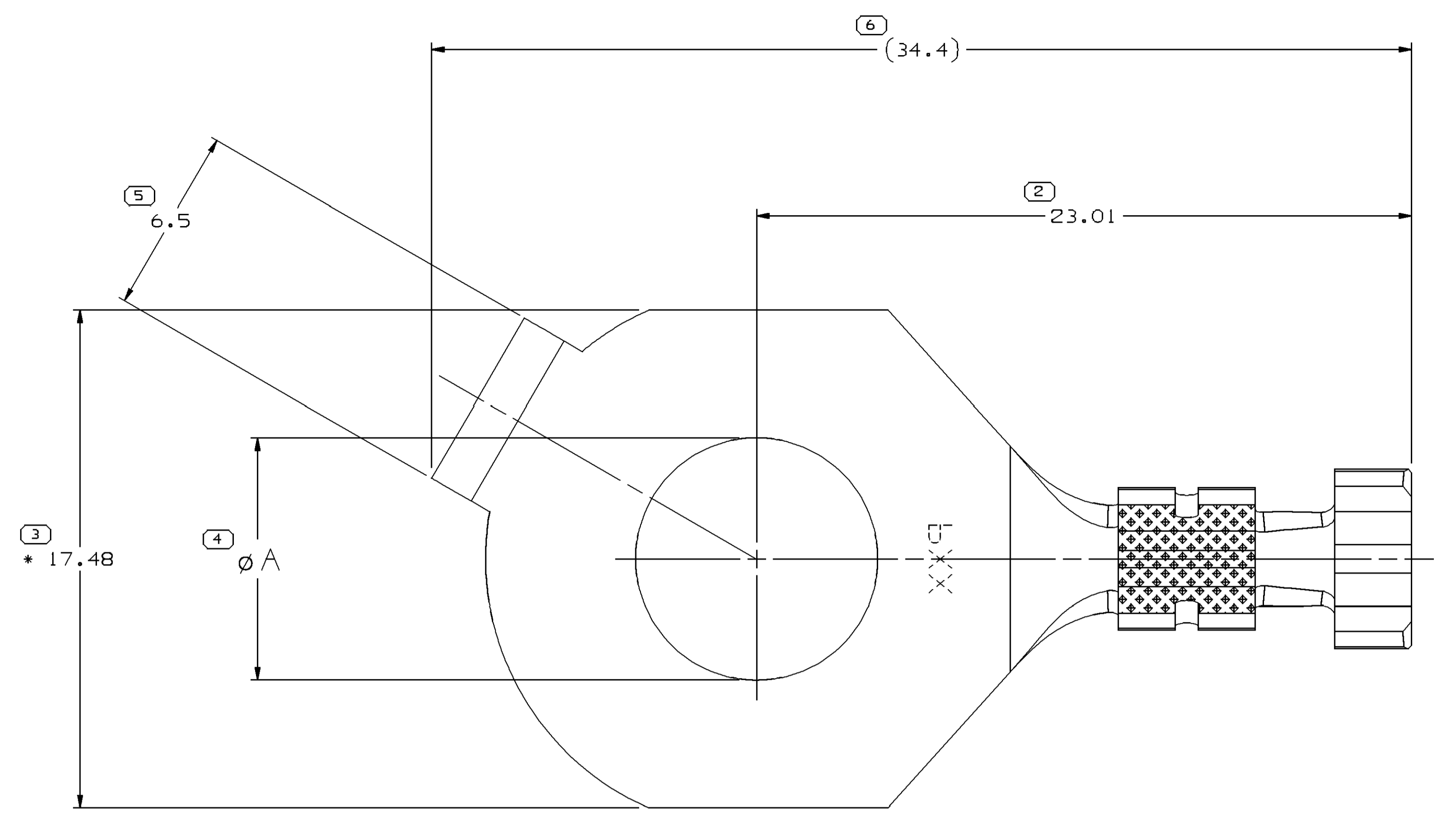
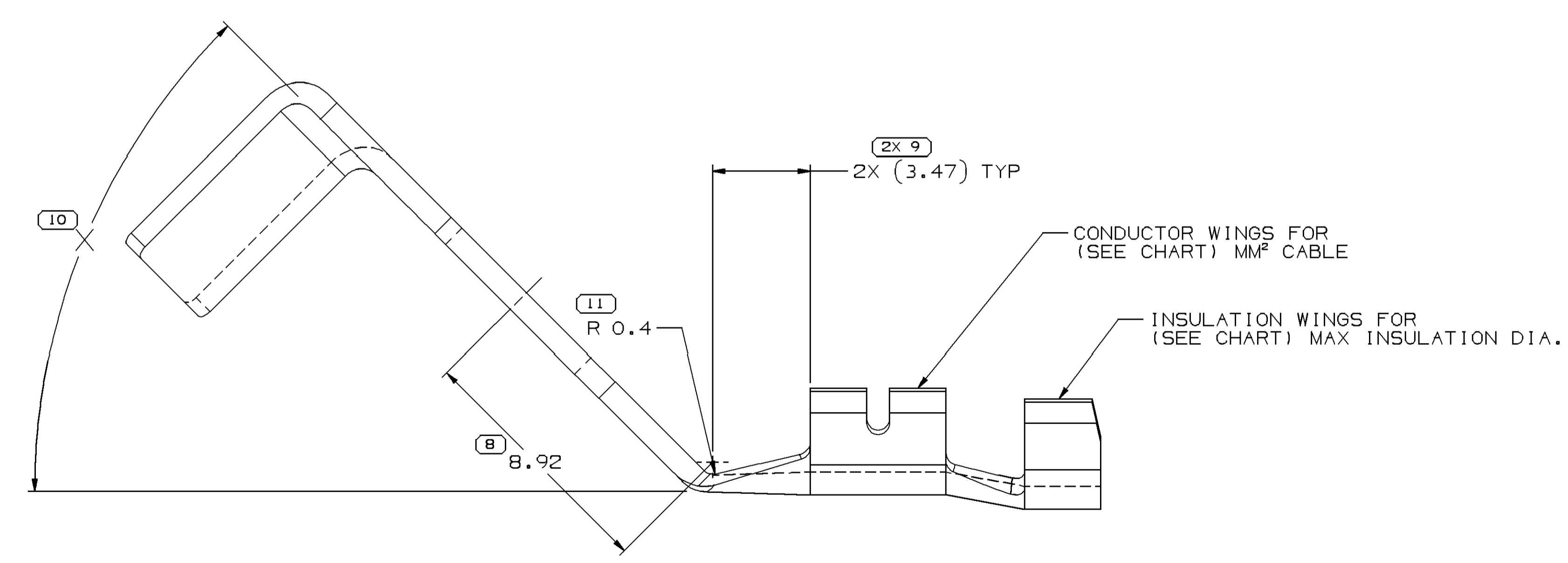
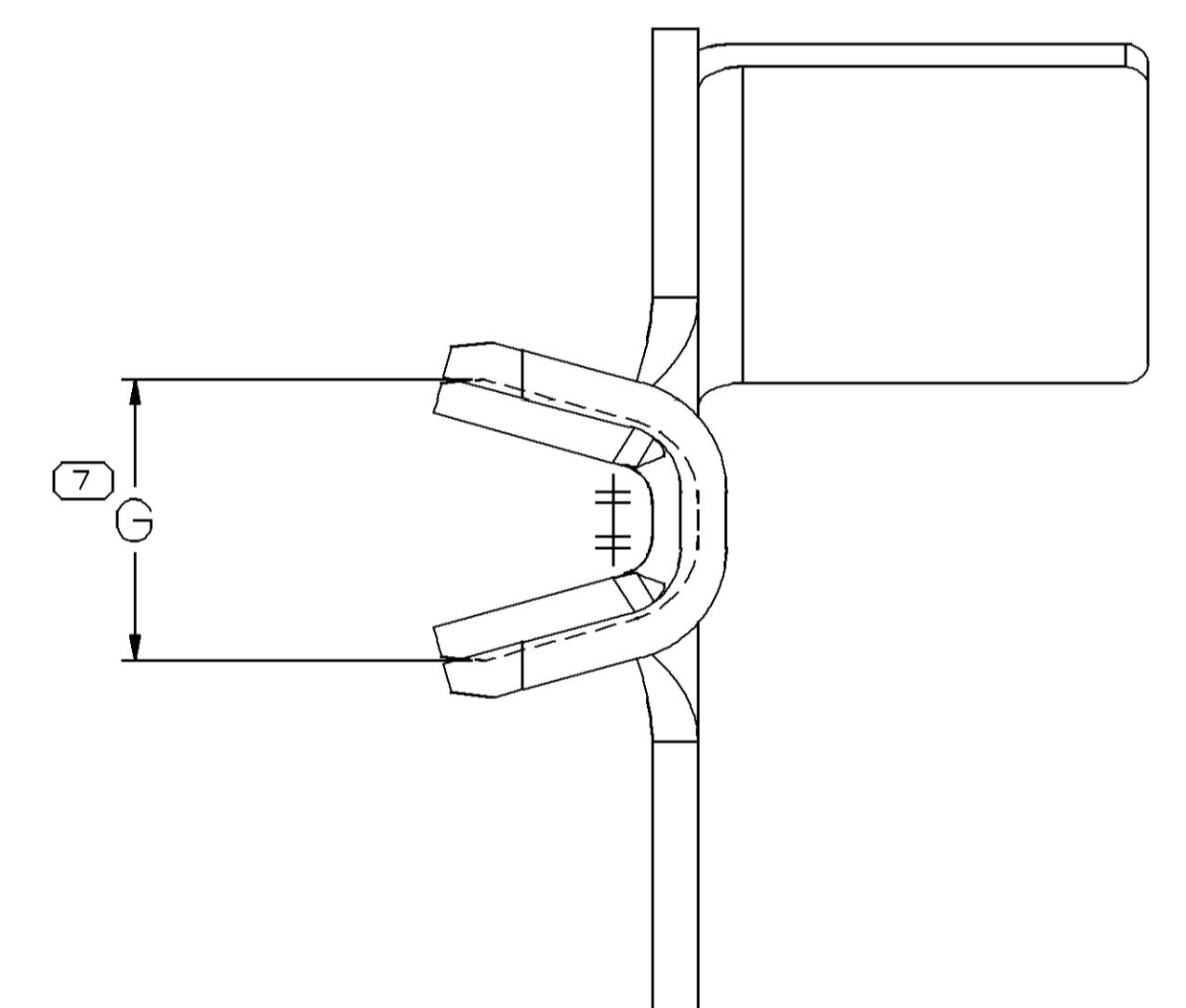
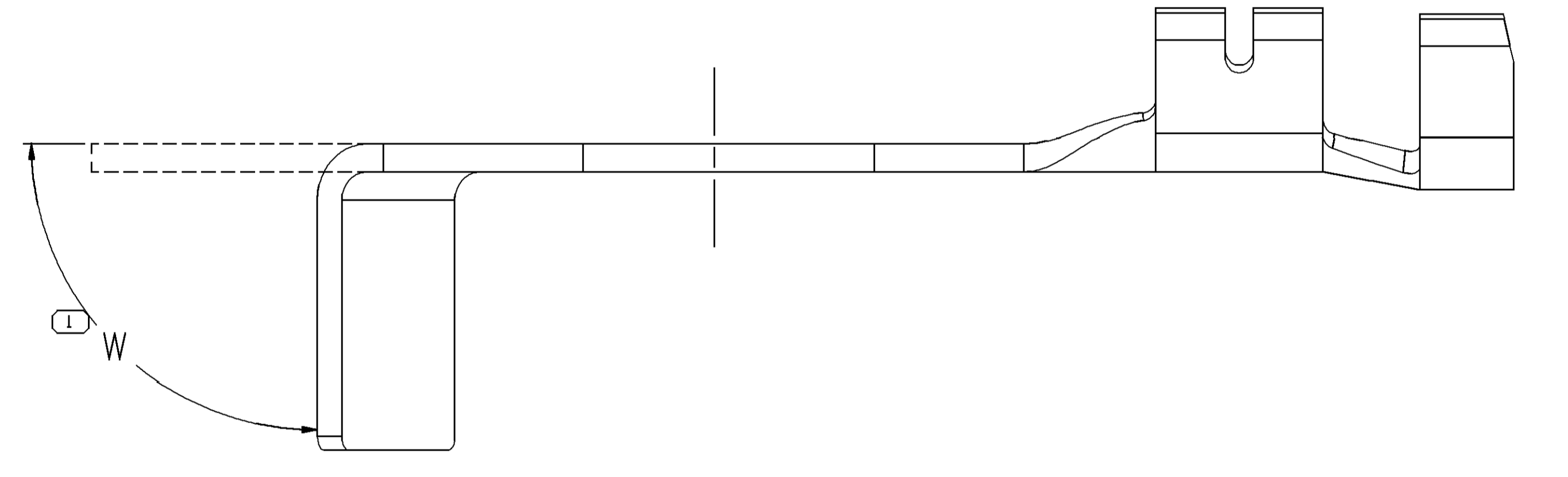
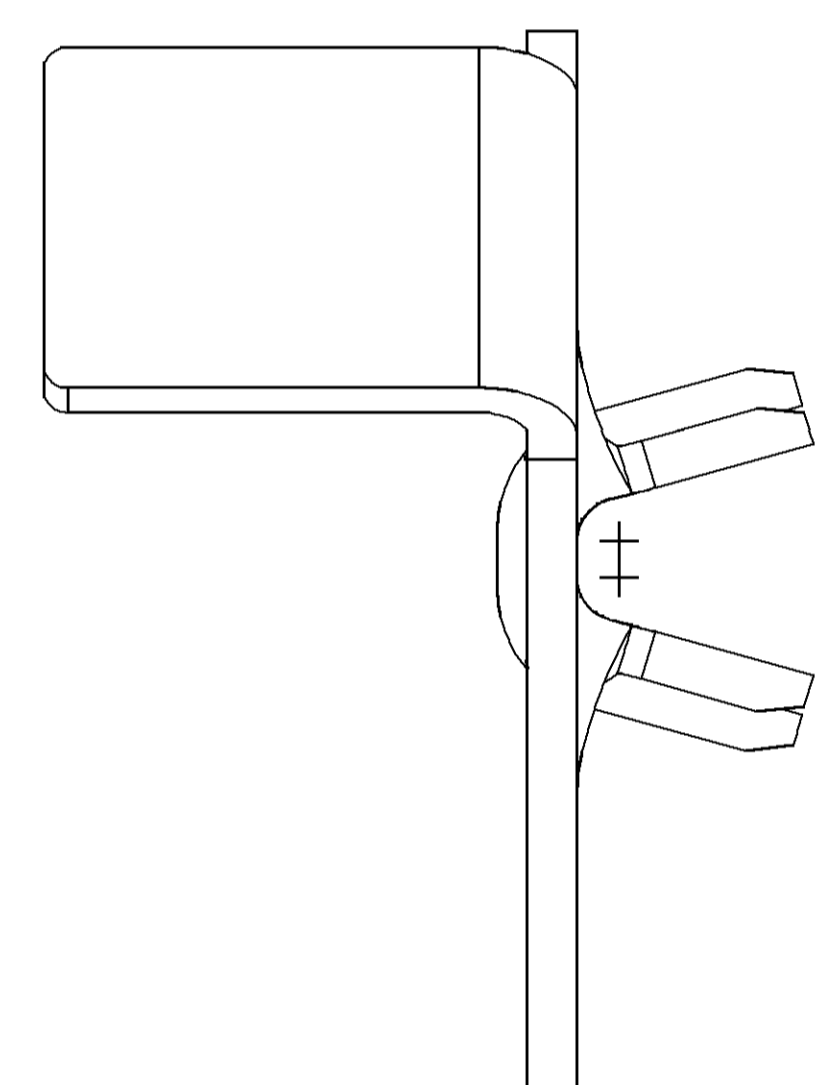
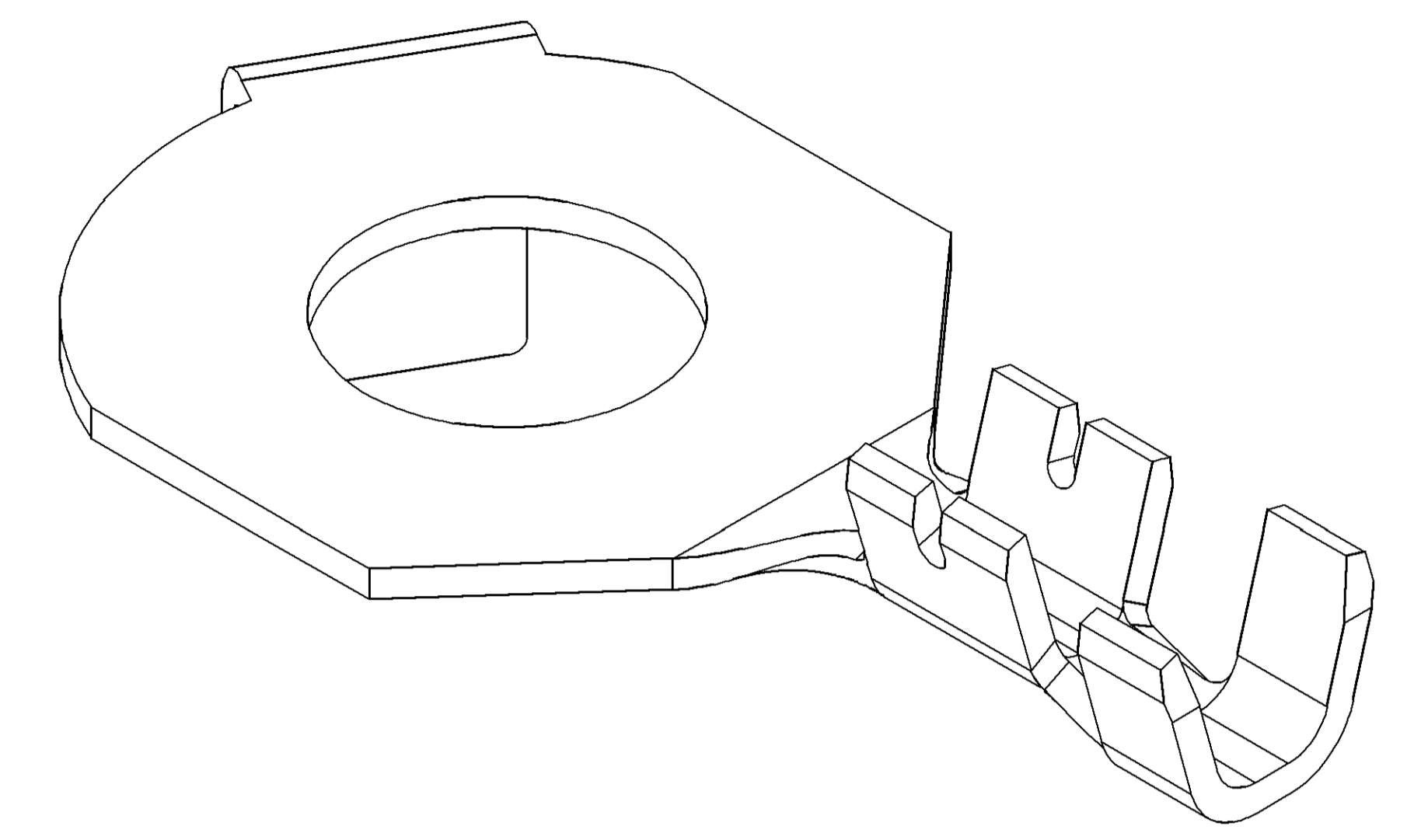


SYMBOL DEFINITION		MISSING SYMBOLS	
A DIMENSION WITHOUT AN INSPECTION REPORT SYMBOL DOES NOT REQUIRE INSPECTION. IT MAY BE CONTROLLED ON THE INDIVIDUAL COMPONENT DRAWING.	TOTAL NO OF INSPECTIONS REQUIRED	NO MISSING SYMBOL NUMBER	
	12		
	LAST NO. USED		
	11		

DWG STATUS	DATE	STG	REV	N/P	ZONE	REVISION HISTORY	AUTH	DR	APV/D	APV/D
R	25AU99	001	-	-	-	CLEARED REVISION COLUMN: 15336640 & 15355189 REVISED BENT TAB & MAT'L SPEC	196646	FMO	PMW	EH
R	25AU99	002	-	-	-	15355120 & 15355190 - OBSOLETE	990003	FMO	PMW	EH
R	06NO99	003	-	-	-	15373480 - RELEASED	990005	FMO	FKV	EH
R	26SE00	004	-	-	-	MAT'L SPEC WAS PM001598 962	203587	RAB	TLP	EJH
R	13NO00	005	-	-	-	15394494 - WAS SEPARATE DWG & MAT'L SPEC WAS PM001598 962	204311	APV	PHC	AK
R	04DE00	006	-	-	-	ALL ACTIVE PARTS: UPDATED PDM ATTRIBUTES	204981	JMR	JMR	AK
R	16JA01	007	-	-	-	15405816 - RELEASED	205924	CJP	CJP	AK
R	19FE01	008	-	-	-	15336640, 15355189 AND 15373480 - REVISED MAT'L SPEC AND MAT'L SIZE	207072	JOS	JOS	EH
R	20NO03	09	-	-	-	15454533 - RELEASED	248978	AUG	AUG	AD
R	23OC09	10	-	-	-	13788232 - RELEASED AND ADDED W COLUMN ATTRIBUTES	409319	MNC	MNC	MNC
R	11MY10	11	-	-	-	ALL ACTIVE PARTS - UPDATED PDM	410803	AHY	JVM	CRD
R	18MY10	12	-	-	-	ALL ACTIVE PARTS - PSD WAS 6	410855	DMC	DMC	LHT
R	08OC10	13	-	-	-	15454533, 15405816, 15394494, 15373480, 15355189 AND 15336640 - DIM 90° +/- 8 WAS 90° +/- 5	412227	MAL	MAL	RRR
R	14MR11	14	-	-	-	13872170 - RELEASED	413654	FPE	RGC	FPE
R	11MY11	15	-	-	-	13872170 - INACTIVE	414227	FPE	RGC	FPE
R	13OC11	16	-	-	-	13872170 - ACTIVE	415736	CBG	CBG	LRS
R	05AU13	17	-	-	-	15509708 - RELEASED	423456	ESC	ESC	LRS
R	30JA14	18	-	-	-	15509708 - HOLE SIZE 6.7 WAS 6.5 & REMOVED INFO FROM "SCREW SIZE" CHART AND UPDATED MAT'L CALLOUT	425381	DRK	JVM	LRS
R	19MR14	19	-	-	-	15519804 - RELEASED; ALL ACTIVE PARTS - Ø A WAS A & UPDATED "SCREW/STUD SIZE" CHART AND COLUMN CALLOUT	425912	CGD	JVM	LRS
R	28JL14	20	-	-	-	UPDATED PART AVAILABILITY 15509708 & 15519804	427135	ERG	VHG	ERG
R	08OC15	21	-	-	-	13872170 - OBSOLETE	431011	NRW	JVM	ERG



TYPE 501



TYPE 502
SAME AS TYPE 501
EXCEPT AS SHOWN

PART NO	REV	N/P	MAT'L SIZE	UNPLATED	MAT'L SPEC	TYPE	SIZE (MM²)	ID DIA	M6	M8	M10	G ±0.3	BENT TAB	X
15519804	01	AA	0.813 X 42.47		15509708	502	1-0.8	17 2.7	X	-	-	3.6	90° +/- 8	45°
15509708	02	AB	0.813 X 42.47		TIN PLATED COPPER ALLOY	501	1-0.8	17 2.7	X	-	-	3.6	90° +/- 8	-
13872170	01	AD	0.813 X 42.47		TIN PLATED COPPER ALLOY	501	5	10 4.5	X	-	-	5.6	90° +/- 8	-
13788232	01	AC	0.813 X 42.47		TIN PLATED COPPER ALLOY	501	1-0.8	17 2.7	-	-	-	3.6	0	-
15454533	01	AD	0.813 X 42.47		TIN PLATED COPPER ALLOY	501	5	10 4.5	-	-	-	5.6	90° +/- 8	-
15405816	01	AD	0.813 X 42.47		TIN PLATED COPPER ALLOY	501	3-2	13 3.7	-	-	-	5	90° +/- 8	-
15394494	01	AF	0.813 X 42.47		TIN PLATED COPPER ALLOY	501	1-0.8	17 2.7	-	-	-	3.6	90° +/- 8	-
15373480	01	AG	0.813 X 42.47		TIN PLATED COPPER ALLOY	501	5	10 4.5	-	-	-	5.6	90° +/- 8	-
15355190	A1	-	0.813 X 40.9		TIN PLATED COPPER ALLOY	501	1-0.8	17 2.7	-	-	-	3.6	90° +/- 5	-
15355189	02	AG	0.813 X 42.47		TIN PLATED COPPER ALLOY	501	1-0.8	17 2.7	-	-	-	3.6	90° +/- 8	-
15355120	A1	-	0.813 X 40.9		TIN PLATED COPPER ALLOY	501	3-2	13 3.7	-	-	-	5	90° +/- 8	-
15336640	03	AF	0.813 X 42.47		TIN PLATED COPPER ALLOY	501	3-2	13 3.7	-	-	-	5	90° +/- 8	-

- NOTES
- UNLESS OTHERWISE SPECIFIED AND/OR INDICATED: DIMENSIONS ARE TO FACE OF VIEW SHOWN AND AUTOMATICALLY ROUNDED BY COMPUTER FOR INSPECTION (SEE MATH MODEL FOR PRECISE DIMENSIONS). FOR ALL OTHER DIMENSIONS NOT SHOWN BUT REQUIRED FOR TOOL BUILD, SEE MATH MODEL FOR PRECISE TOOL PATH DATA.
 - "*" INDICATES DIMENSIONS MADE AT CUT-OFF AND CRIMP DIE.

PROCESS SENSITIVE DIMENSION	3/8	M10
10.6 ±0.1	3/8	M10
8.5 ±0.1	5/16	M8
6.7 ±0.1	1/4	M6
Ø A ±0.13	STANDARD	METRIC
	SCREW/STUD SIZE	

DELPHI
DELPHI PACKARD ELECTRICAL/ELECTRONIC ARCHITECTURE
WARREN, OH
COPYRIGHT 1998 DELPHI CORPORATION AND/OR ITS AFFILIATES. ALL RIGHTS RESERVED.
THIS DRAWING IS THE PROPERTY OF DELPHI CORPORATION AND CONTAINS DELPHI CONFIDENTIAL INFORMATION. THE REPRODUCTION, DISTRIBUTION AND UTILIZATION OF THIS DOCUMENT OR ITS CONTENTS OR DATA, AS WELL AS COMMUNICATION OF ANY CONTENT TO OTHERS, WITHOUT EXPRESS AUTHORIZATION, IS PROHIBITED.

DWG TYPE: PART DRAWING
STYLE: D
VOLUME (OMP):
DISTR CODE:
UNLESS OTHERWISE SPECIFIED
THIS DOCUMENT IS IN ACCORDANCE WITH ASME Y14.5M-1994 AS MODIFIED BY THE 2003 SUPPLEMENT AND TELEPUBLISHING ADDENDUM-2001. SEPARATE PATTERNS OF FEATURES MAY BE SHOWN SEPARATELY. REFERENCE TO REFERENCES.
ALL DIMENSIONS ARE IN MILLIMETERS
REFERENCE:
THIRD ANGLE PROJECTION
DO NOT SCALE
USE MATH DATA
ANGULAR TOLERANCE: 12°

DRAWING NUMBER: 12103500
DATE: 11AU98
SCALE: 5:1
FRAME NO: 1 OF 1
SHEET NO: 5 OF 5
STG: R
REV: 21