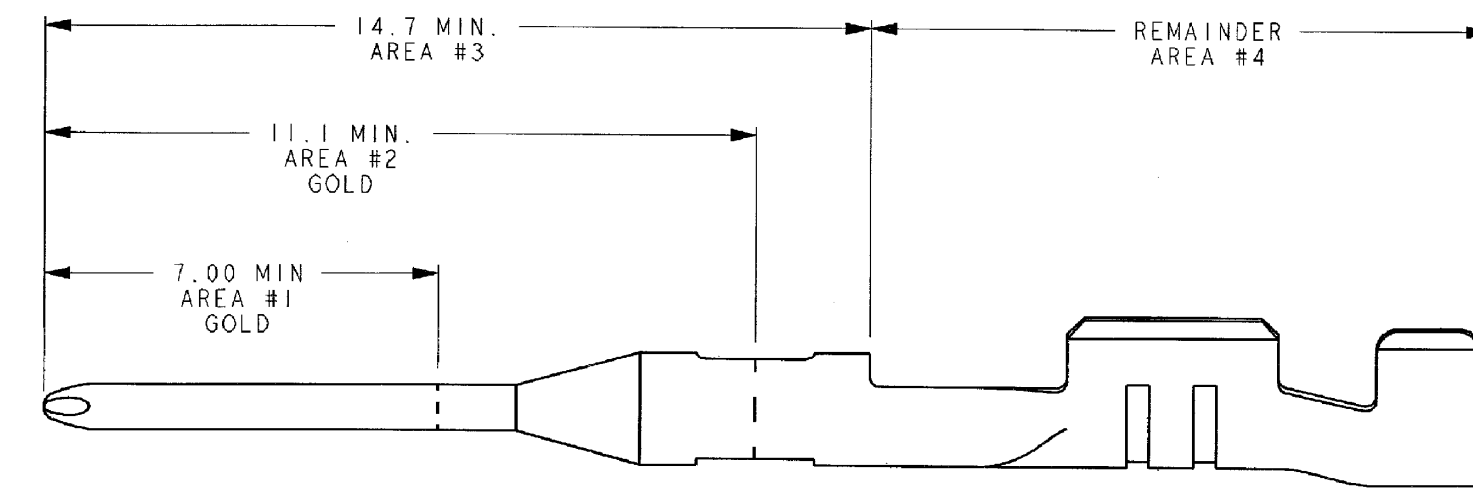
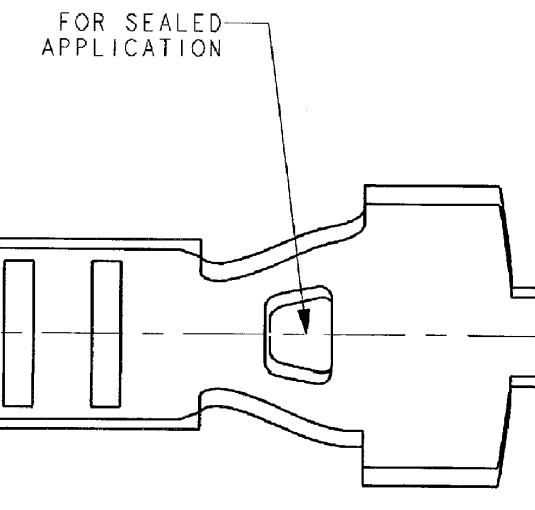
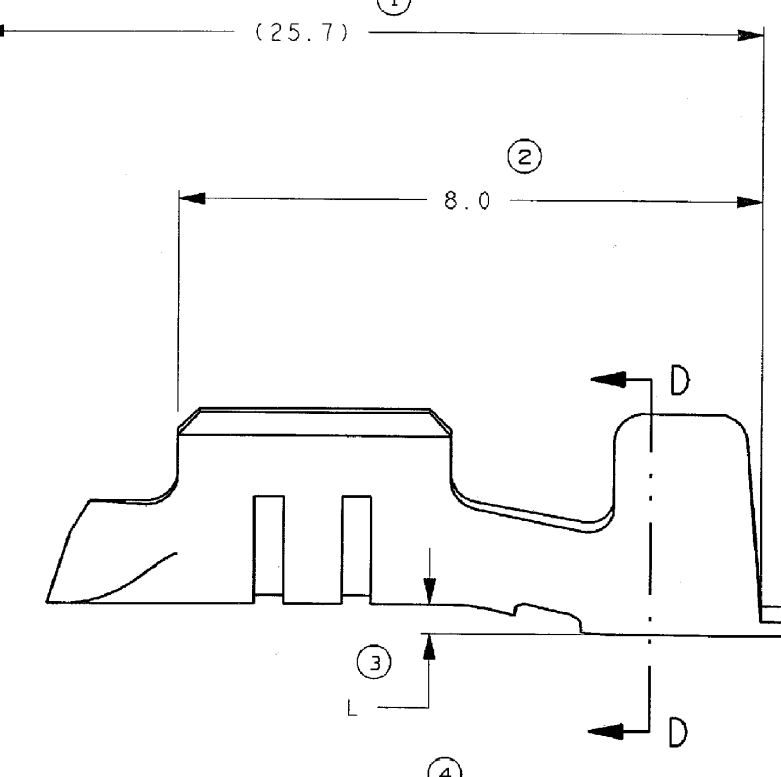


PLATING NO.	PLATING TYPE / PROCESS	THICKNESS	APPLICABLE SPEC.	PLATING AREA
1	ELECTRO MATTE FIN PRE PLATED	50-100µ"		ALL OVER
2	PREVIOUS METAL NICKEL FLASH ALL OVER	FLASH OPTIONAL	NONE	ALL OVER
	SULPHAMATE DUCTILE NICKEL	50µ" MIN	ASTM B 889-90 TYPE 2	#3
	(C) GOLD ELECTRODEPOSITED 89% Au MIN CODE HARDNESS KNOOP 130-200 HRCS	7.0 MIN AT 30µ" MIN.	ASTM B-488-95	#1
2	(D) GOLD ELECTRODEPOSITED 98% Au MIN CODE C HARDNESS KNOOP 130-200 HRCS	11.1 MIN AT 30µ" MIN.	ASTM B-488-95	#2
	(E) ELECTRO MATTE SN/LEAD 95/5 (Sn/Pb)	100-300µ"	ES-F803-14A229-CA	#4
	(F) OPT-100% PURE ELECTRO MATTE TIN PREFERRED		ASTM B-545-83	#4

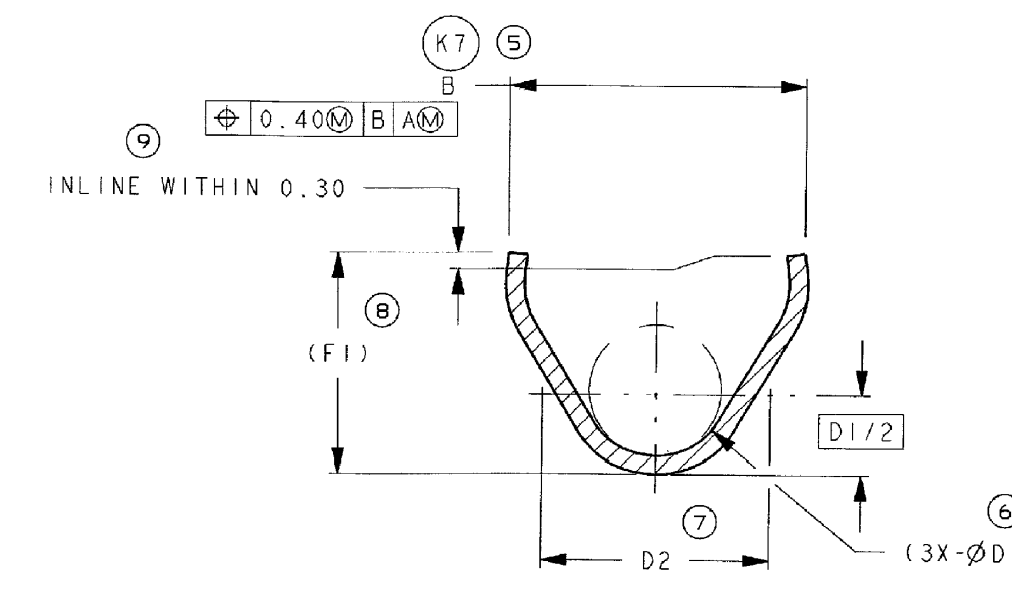


PLATING OPTIONS

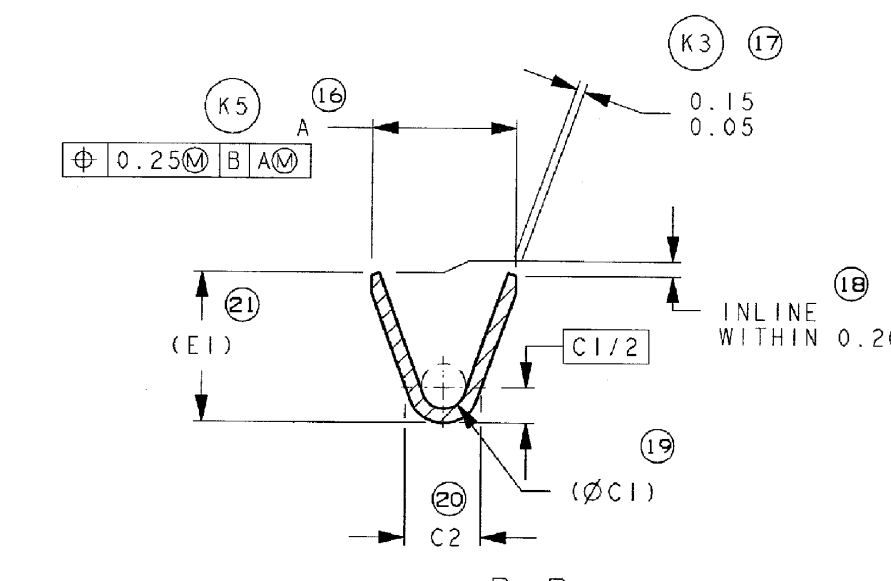
NOTE: FOR GOLD OPTIONS 2c AND 2d, PLATING PROCESSES 2a, 2b, 2e & 2f APPLY.



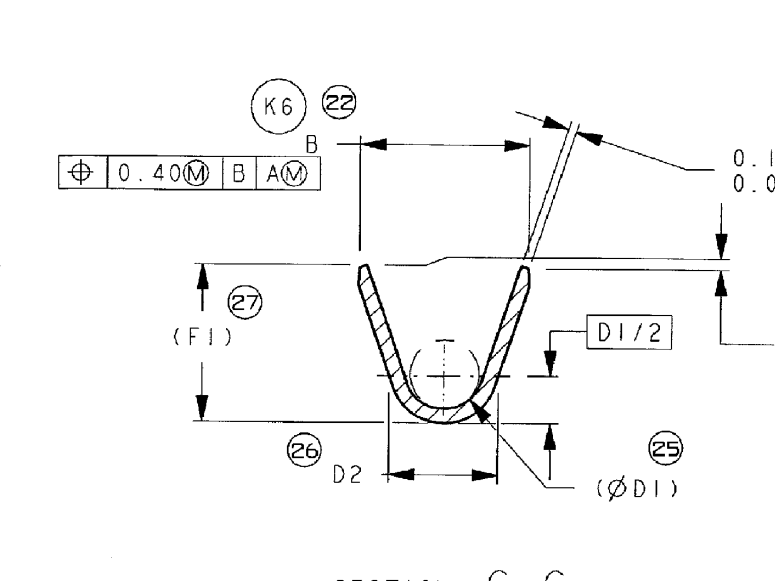
CABLE SEAL GRIP CONFIGURATION



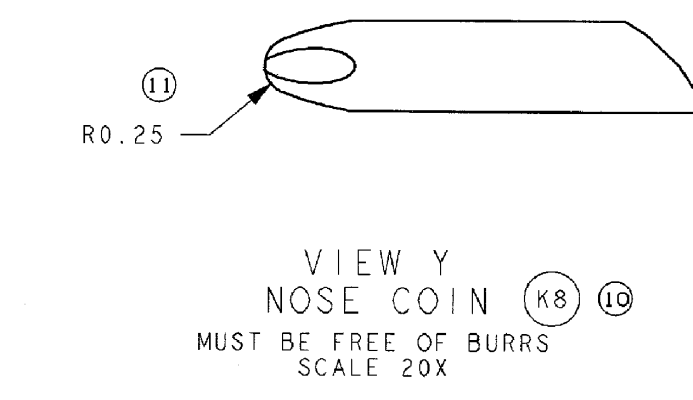
SECTION D-D
CABLE SEAL INSULATION



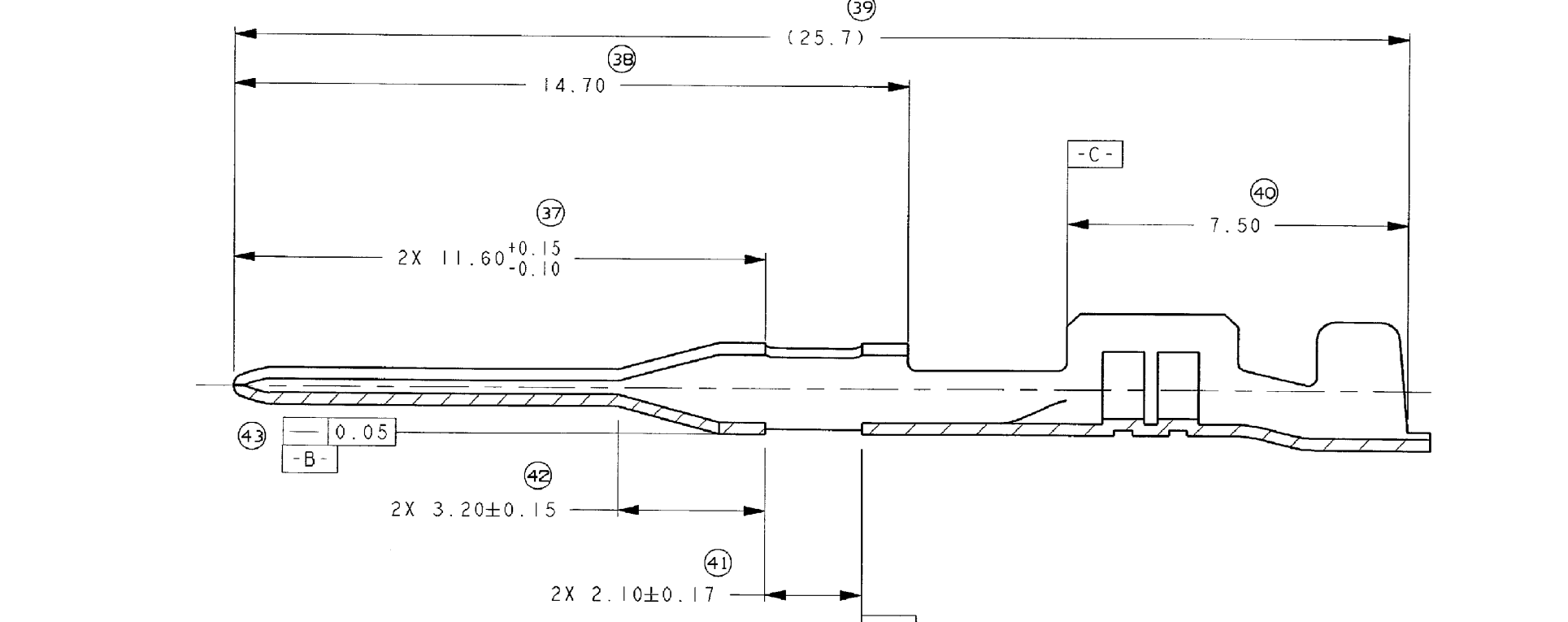
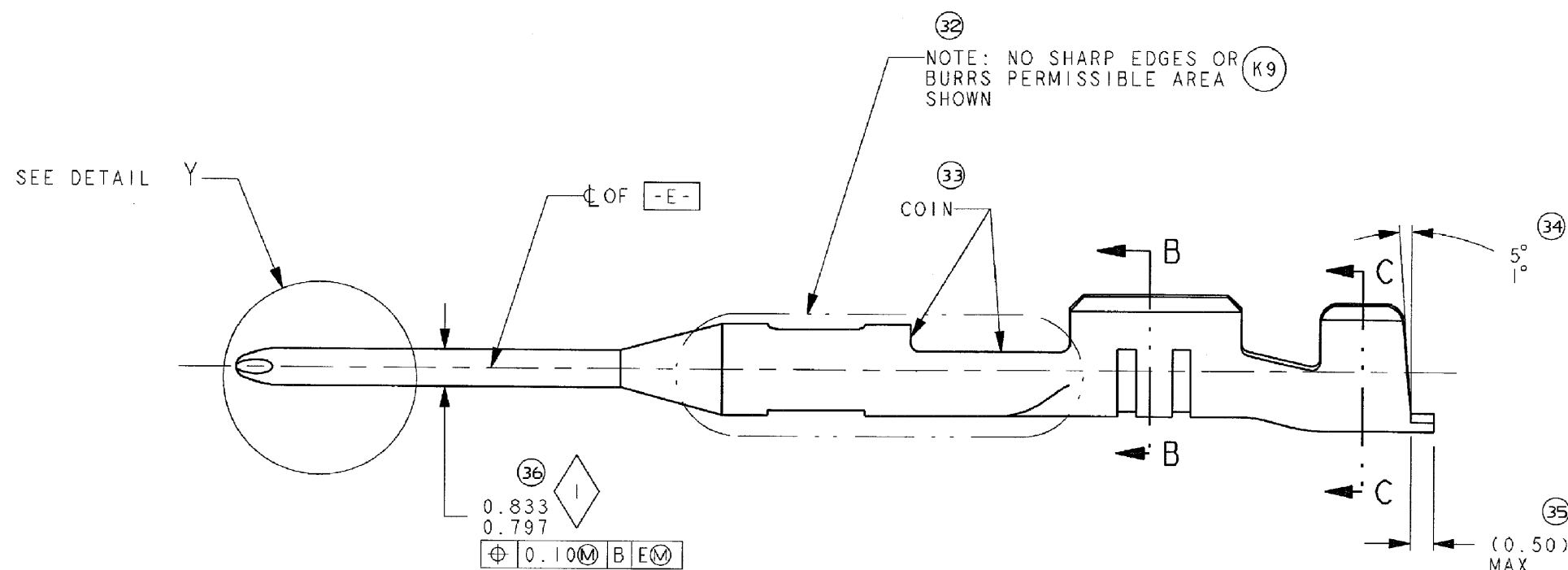
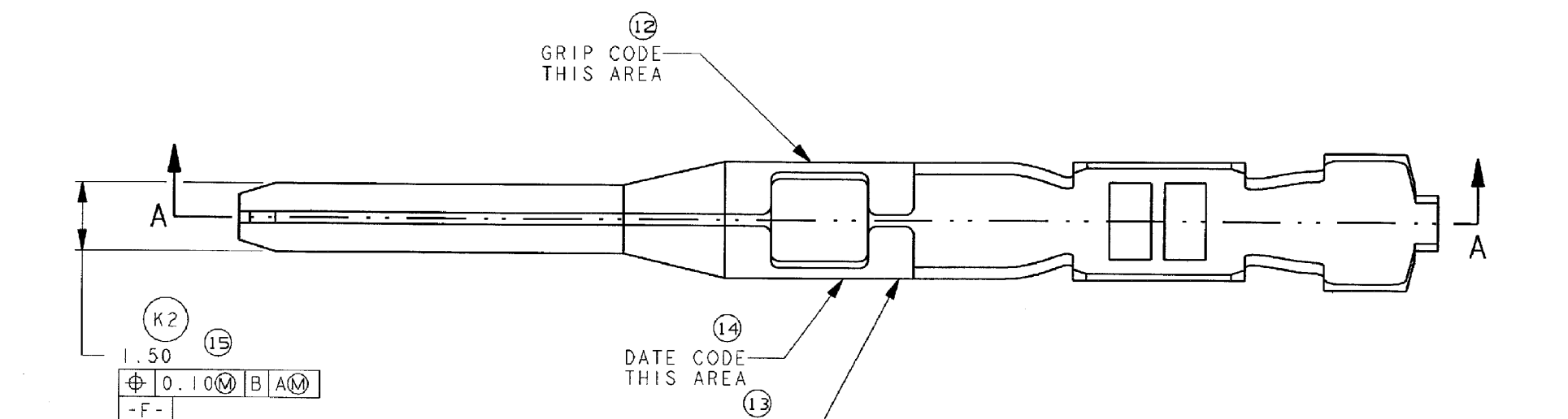
SECTION B-B
CONDUCTOR



SECTION C-C
UNSEALED INSULATION



VIEW Y
NOSE COIN
MUST BE FREE OF BURRS
SCALE 20X



SECTION A-A

FCI PART NUMBER	GRIP CODE	WIRE SIZE	CW	CH	CRIMP STYLE	CW	CH	CRIMP STYLE	
		CONDUCTOR		INSULATION					
CRIMP SPECIFICATION (MM)									
54002237	22	AUL	22/24	1.85	1.05	"B"	3.10	3.10	"O"
54001846	18	AUL	18/20	2.05	1.27	"B"	3.50	3.50	"O"
54001438	14	AUL	14/16	2.45	1.55	"B"	4.10	4.10	"O"
54002236	22	AUL	22/24	1.85	1.05	"B"	2.20	1.85	"D"
54001845	18	AUL	18/20	2.05	1.27	"B"	2.60	2.25	"D"
54001437	14	AUL	14/16	2.45	1.55	"B"	3.20	2.65	"D"
54002235	22	AUG	22/24	1.85	1.05	"B"	3.10	3.10	"O"
54001844	18	AUG	18/20	2.05	1.27	"B"	3.50	3.50	"O"
54001436	14	AUG	14/16	2.45	1.55	"B"	4.10	4.10	"O"
54002234	22	AUG	22/24	1.85	1.05	"B"	2.25	1.85	"D"
54001843	18	AUG	18/20	2.05	1.27	"B"	2.60	2.25	"D"
54001435	14	AUG	14/16	2.45	1.55	"B"	3.20	2.65	"D"
54002233	22	22/24	22/24	1.85	1.05	"B"	3.10	3.10	"O"
54001842	18	18/20	2.05	1.27	"B"	3.50	3.50	"O"	
54001434	14	14/16	2.45	1.55	"B"	4.10	4.10	"O"	
54002232	22	22/24	1.85	1.05	"B"	2.20	1.85	"D"	
54001841	18	18/20	2.05	1.27	"B"	2.60	2.25	"D"	
54001433	14	14/16	2.45	1.55	"B"	3.20	2.65	"D"	

SEE FCI PRODUCT EVALUATION LAB *APEX TERMINAL CRIMP GUIDELINES FOR CRIMP & WIRE INFORMATION. THESE GUIDELINES MUST BE FOLLOWED. NOT CRIMPING TO THESE GUIDELINES MAY RESULT IN ELECTRICAL OR MECHANICAL FAILURES.

CRIMP TOLERANCES FOR BOTH CONDUCTOR AND INSULATION CRIMPS TO BE AS FOLLOWS:

CW CRIMP WIDTH ±0.08
CH CRIMP HEIGHT ±0.05

- NOTES:
- MATERIAL: 0.2546 005 C1802 (MGT)
 - TENSILE STRENGTH: 487 TO 650 KSI
 - FIELD STRENGTH: 1500 KSI MIN.
 - ELONGATIONS: IN 2 MIN. 2 MIN.
 - SEE PLATING OPTION VIEW FOR PLATING NOTES.
 - QUALITY ASSURANCE REQUIREMENTS SPEC DATA REQUIRE
 - INDICATES IN-PROCESS INSPECTION FOR MANUFACTURING DIMENSIONS, OR SPECIFICATIONS
 - DENOTES GAGE REQUIREMENTS FOR USER AND MANUFACTURER

ISSN	01-18-07	ED	DATE	18/07/07	REV	1	DATE	18/07/07	
DATE	18/07/07	REV	1	DATE	18/07/07	REV	1	DATE	18/07/07
DATE	18/07/07	REV	1	DATE	18/07/07	REV	1	DATE	18/07/07

LAST BALLOON: 1

FCI P/N	GRIP CODE	FCI P/N'S GOLD OPTION 2c	GRIP CODE GOLD 2c	FCI P/N'S GOLD OPTION 2d	GRIP CODE GOLD 2d	CABLE SEAL	UNSEALED OR END SEAL	GAGE	A	B	(ØC1)	C2	(ØD1)	D2	(ØE1)	(ØF1)	L
54002233	22	54002235	22	AUG	54002237	22	AUL	YES									
54001842	18	54001844	18	AUG	54001846	18	AUL	YES									
54001434	14	54001436	14	AUG	54001438	14	AUL	YES									
54002232	22	54002234	22	AUG	54002236	22	AUL		YES								
54001841	18	54001843	18	AUG	54001845	18	AUL		YES								
54001433	14	54001435	14	AUG	54001437	14	AUL		YES								

NOTES

1. UNLESS OTHERWISE SPECIFIED AND/OR INDICATED:

DIMENSIONS ARE TO FACE OF VIEW SHOWN AND AUTOMATICALLY ROUNDED BY COMPUTER FOR INSPECTION (SEE MATH MODEL FOR PRECISE DIMENSIONS). FOR ALL OTHER DIMENSIONS NOT SHOWN BUT REQUIRED FOR TOOL BUILD, SEE MATH MODEL FOR PRECISE TOOL PATH DATA.

54001433	E3	N	13672218	O1	AB	M6573H92	-	-	-	-	-	-	-	-	-	-	-
54001845RWC	E3	N	15520987	O1	-	15422501	-	-	-	-	-	-	-	-	-	-	-
54001845RWA	E3	N	15520989	O1	-	15422501	-	-	-	-	-	-	-	-	-	-	-
54001845	E3	N	15422501	O1	AA	15520986	2d	15520986	O1	-	-	-	-	-	-	-	-
54002236RWC	E3	N	15520995	O1	-	15520991	-	-	-	-	-	-	-	-	-	-	-
54002236RWA	E3	N	15520993	O1	-	15520991	-	-	-	-	-	-	-	-	-	-	-
54002236	E3	N	15520991	O1	-	15520992	2d	15520992	O1	-	-	-	-	-	-	-	-
54001841	E3	N	15438399	O1	AA	M6573H92	-	-	-	-	-	-	-	-	-	-	-

PART NUMBER	REV	SEALED	PART NUMBER	REV	N/P	MAT'L SPEC	PLATING PROCESS OPTION	PART NUMBER	REV	N/P	MAT'L SPEC
MVL							PLATED				UNPLATED

TOLERANCE UNLESS OTHERWISE SPECIFIED:

DECIMAL: ANGULAR ±2°

AD NONE 1 OF 1 R 03 -

THIRD ANGLE PROJECTION

DO NOT SCALE

USE MATH DATA

DELPHI
DELPHI PACKARD ELECTRICAL/ELECTRONIC ARCHITECTURE

WARREN, OH
COPYRIGHT 2007 DELPHI CORPORATION AND/OR ITS AFFILIATES. ALL RIGHTS RESERVED.

THIS DRAWING IS THE PROPERTY OF DELPHI CORPORATION AND CONTAINS DELPHI CONFIDENTIAL INFORMATION. THE REPRODUCTION, DISTRIBUTION AND UTILIZATION OF THIS DOCUMENT OR ITS RELATED COORDINATE DATA, AS WELL AS COMMUNICATION OF ANY CONTENT TO OTHERS, WITHOUT EXPRESS AUTHORIZATION, IS PROHIBITED.

DWG TYPE: PART DRAWING

DATE: 18/07/07

OR: MEZA, VERONICA; MEZA, VERONICA; MIRAMONTES, MOISES

DRAWING NUMBER: 13672903

TAXI TERM M 1.5

SIZE: AD NONE 1 OF 1 R 03 -