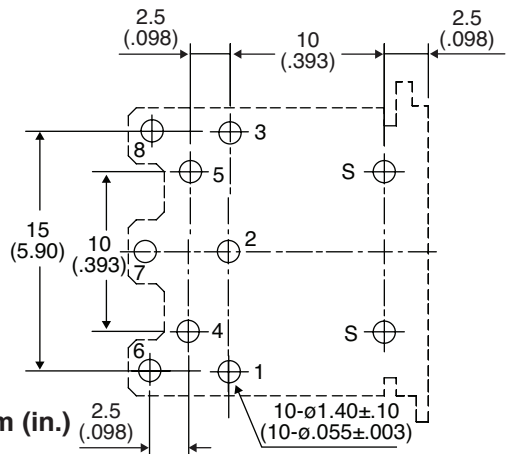
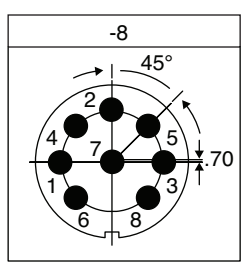
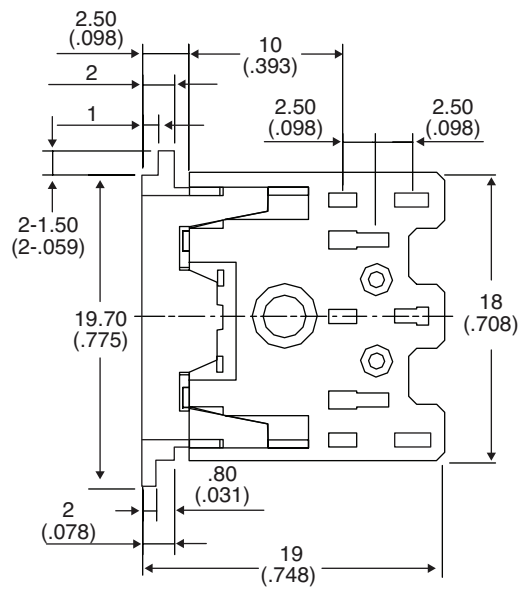
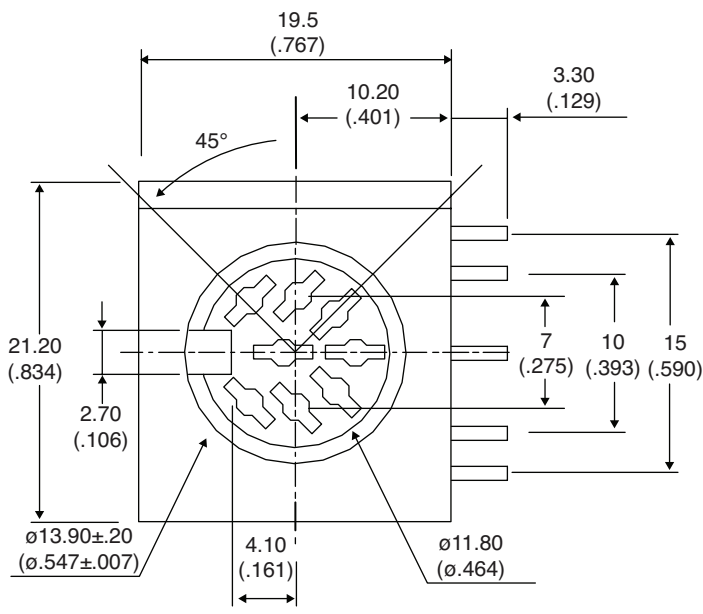


# Din Jack

161-0508-E



Din Jack



Dimensions: mm (in.)

PCB Layout ±0.1 (±.003)  
(Bottom View)

ELECTRICAL	
Type:	PCB, 8 Pin , Shielded
Insulation Resistance:	100MΩ @ 500V
Dielectric Strength:	500V AC for 1 min.
Contact resistance:	30mΩ max.
Operating Temperature:	-20°C to 60°C
Rating:	DC 24V, 1A
Life Expectancy:	5,000 cycles min.
Soldering Heat:	Solder Temp 260±5°C @ 5±1 seconds dip time

MATERIALS					
No.	Part Name	Qty.	Material	Plated	Color
1	Contact	8	Brass	Sn/Cu	-
2	Sleeve	1	P.B.S.	Sn/Cu	-
3	Housing	1	PBT-94V0	-	Black
4	Cover	1	PBT-94V0	-	Black
5	Metal Shield	1	P.B.S.	Nickel	-

Date Last Revised: 8/3/12

Available from Mouser Electronics  
1-800-346-6873 / www.mouser.com

KC-301190

Specifications are subject to change without notice. No liability or warranty implied by this information. Environmental compliance based on producer documentation.

161-0508-E

# Mouser Electronics

Authorized Distributor

Click to View Pricing, Inventory, Delivery & Lifecycle Information:

[Kobiconn:](#)

[161-0508-E](#)