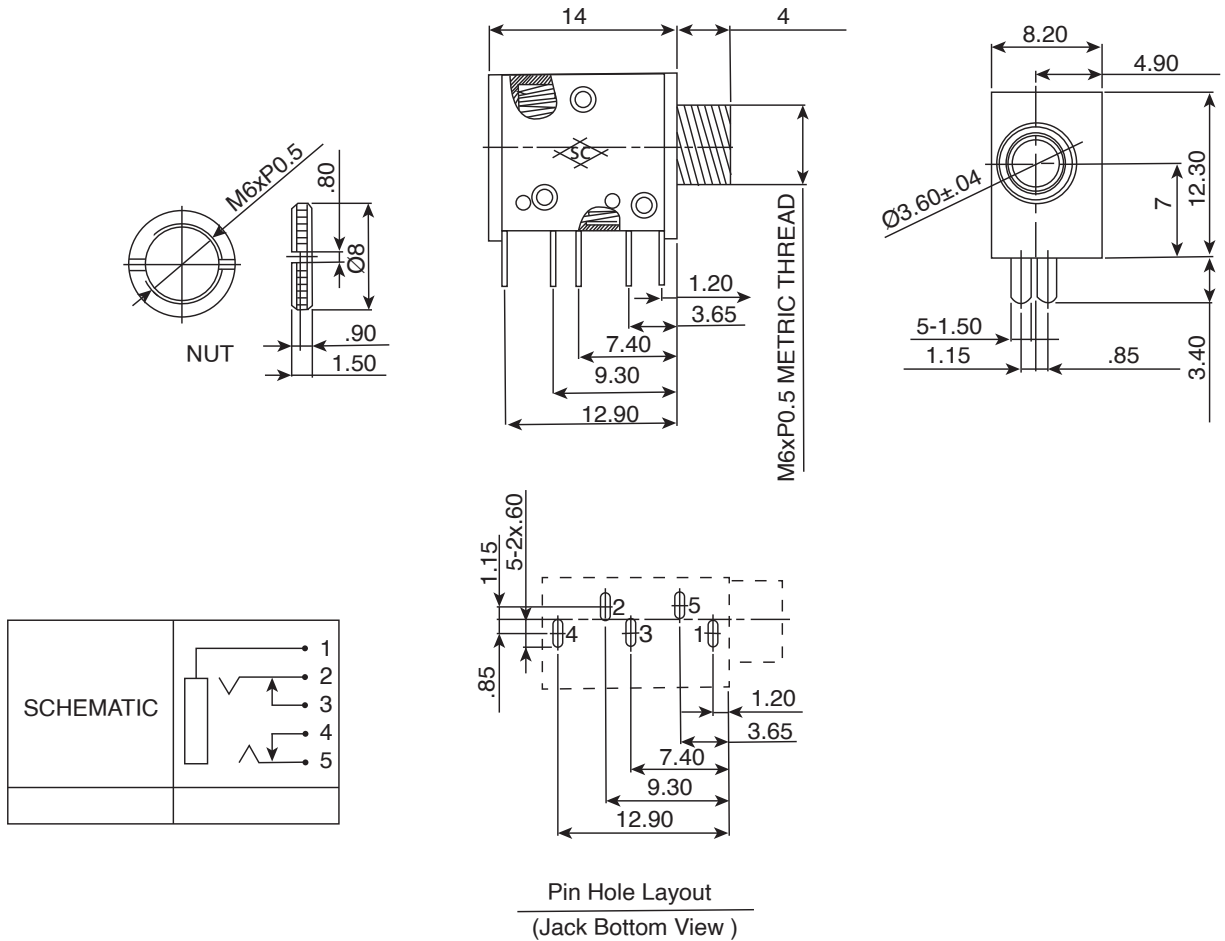


### DIMENSIONS: mm



### SPECIFICATIONS:

- Contact Resistance:  $30m\Omega$  max
- Current Rating: Max 5A/24VDC
- Insulation Resistance:  $100M\Omega$  min. at 500VDC
- Dielectric Withstand Voltage: 500VAC for one minute.

### Note:

- RoHS Compliant by Exemption