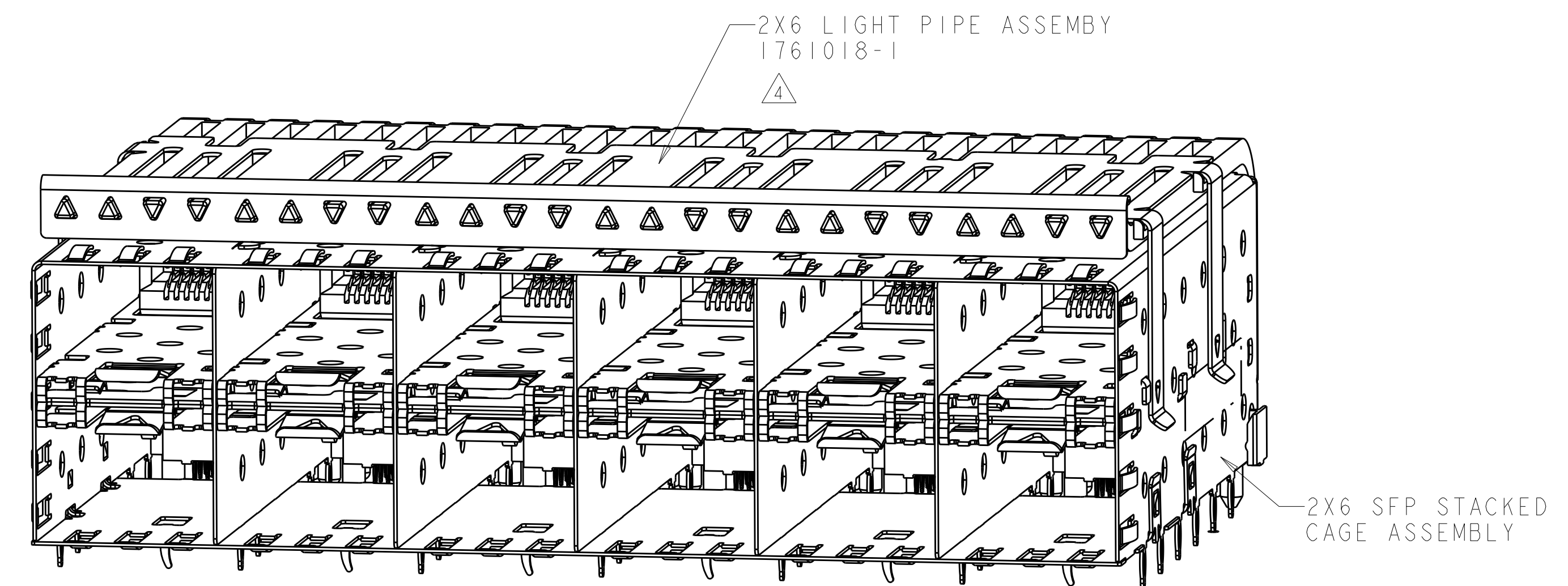
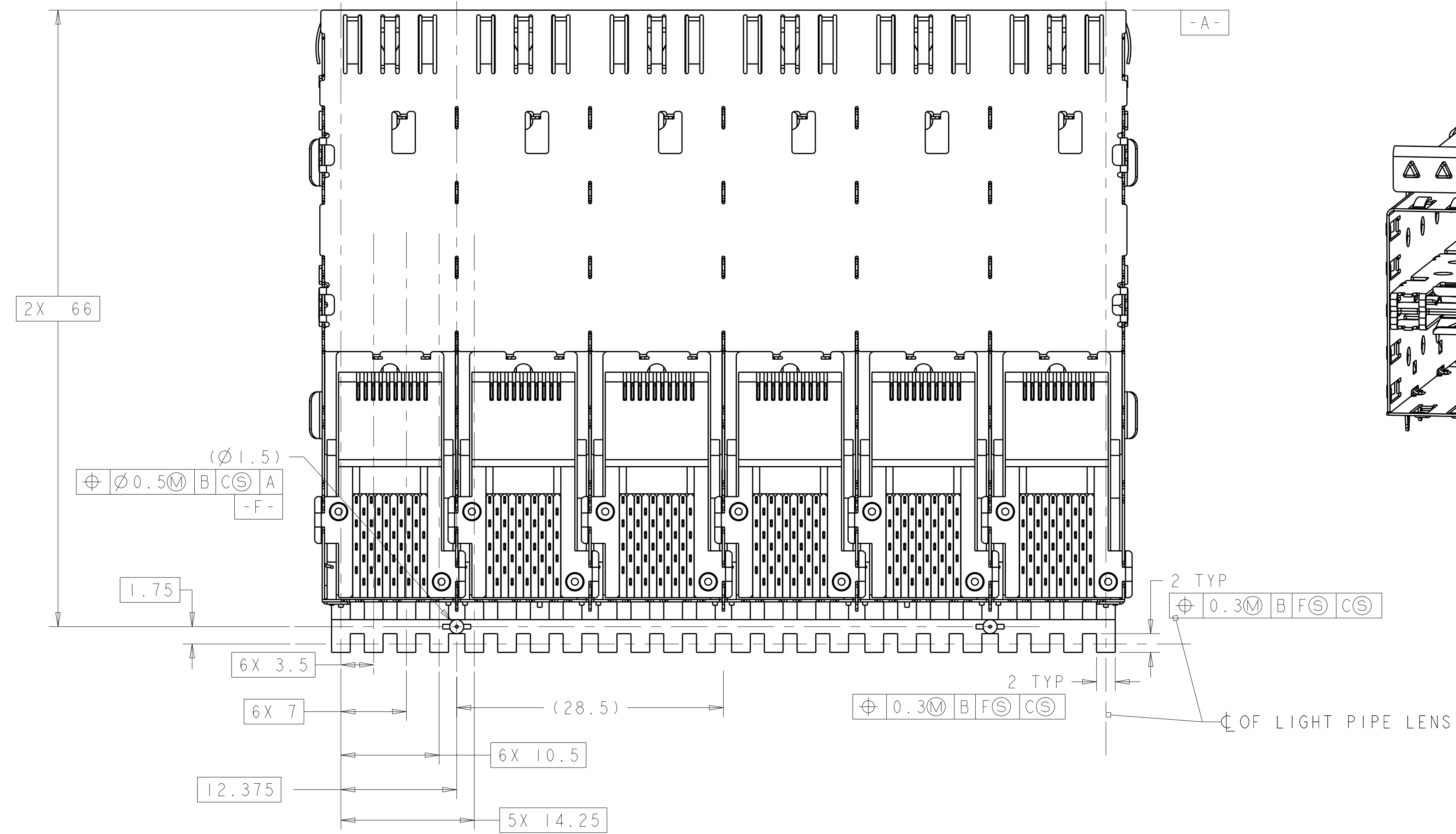
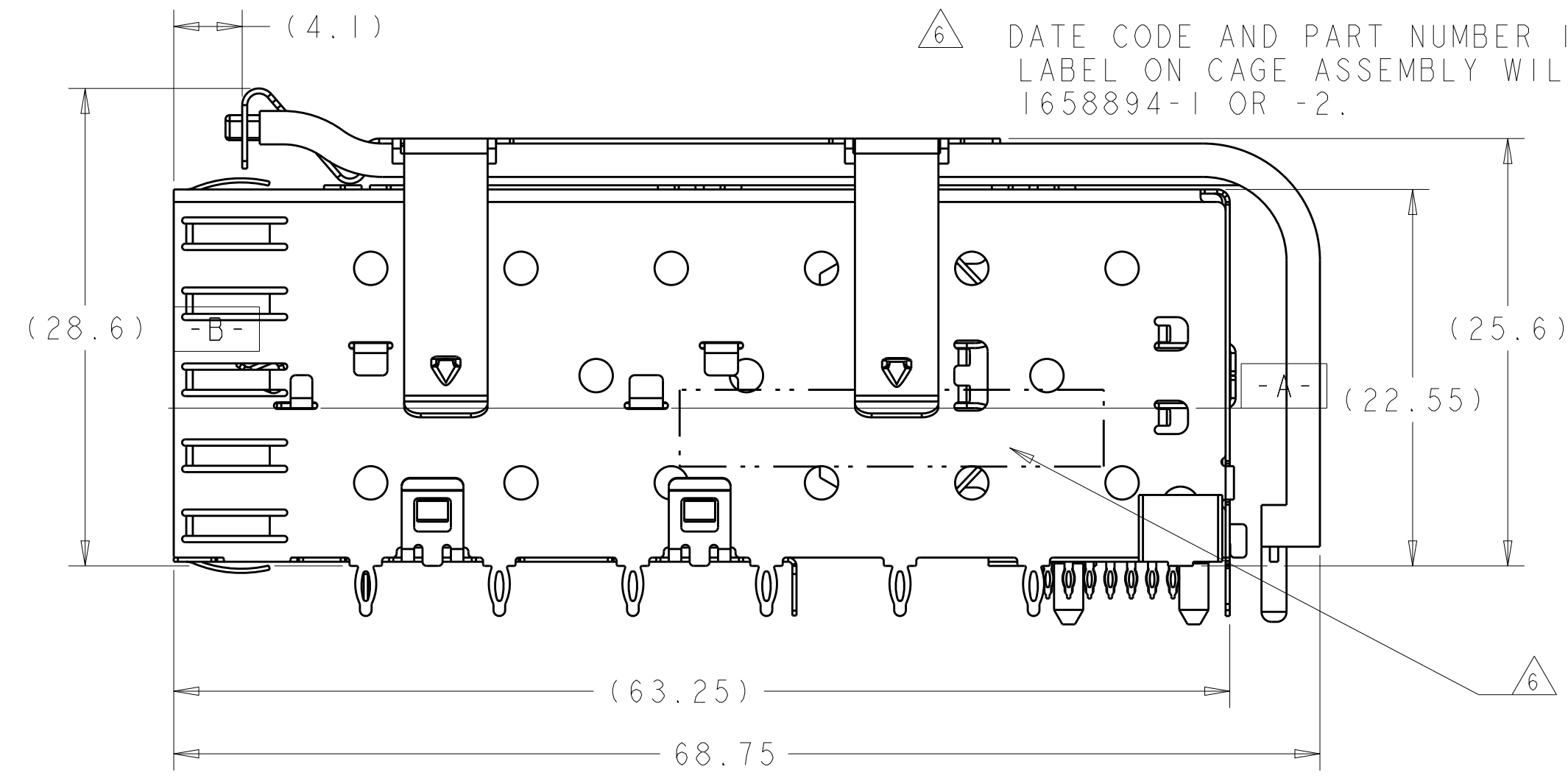
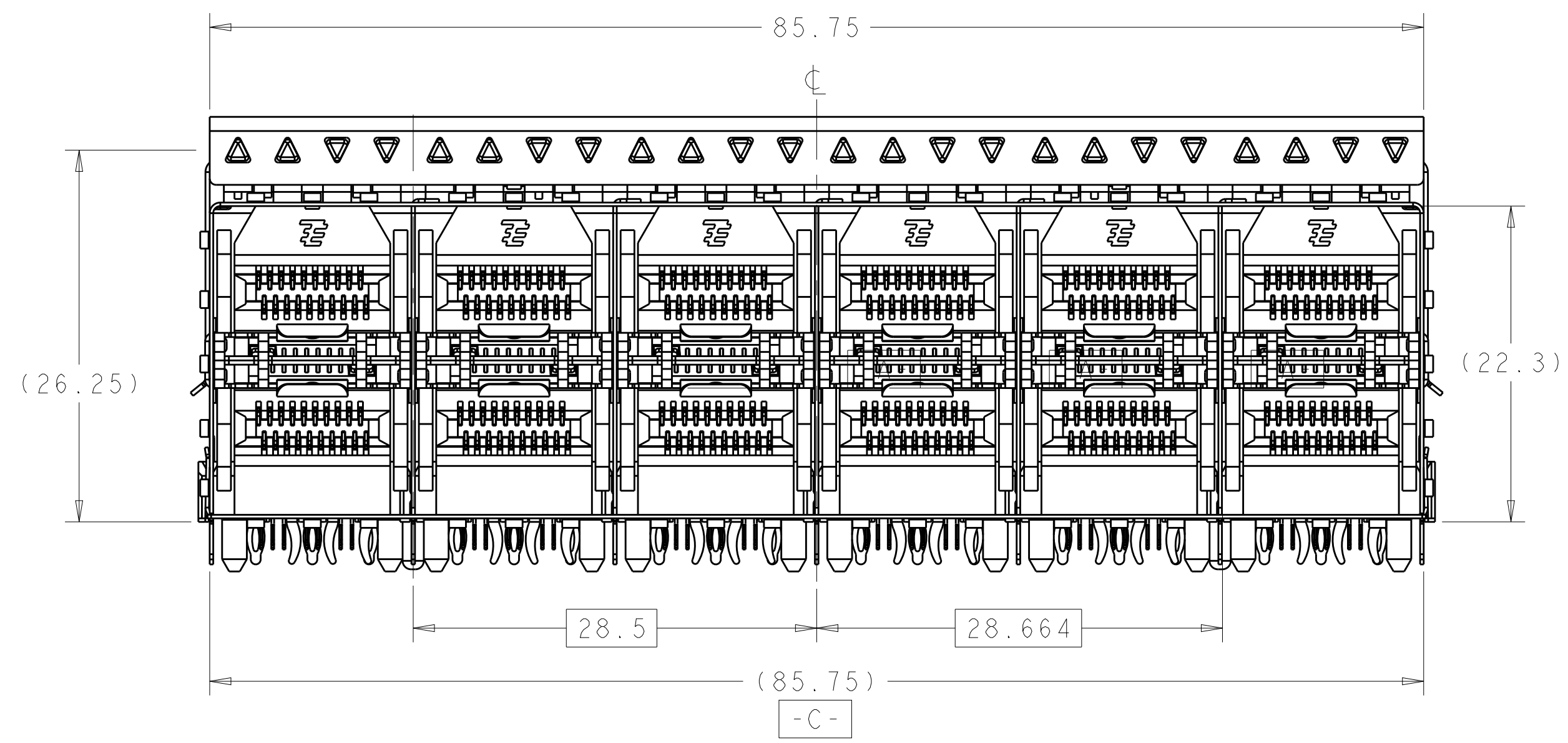


LOC	DIST	REV	DESCRIPTION	DATE	DWN	APVD
ES	00					
C			ECR-08-028454	11NOV2008	AL	SY
D			REVISED PER ECO-14-000886	20FEB2014	JW	SH
D1			REVISED PER ECO-14-010419	11JUL2014	JW	SH
E			REVISED PER ECO-15-013594	22SEP2015	JW	SH

- △ DATUM AND BASIC DIMENSION TO BE DETERMINED BY CUSTOMER
- △ DATUM C APPLIES OVER ENTIRE DIMENSION
- △ INTERPRETATION OF DATUM REFERENCE FRAME IN ACCORDANCE WITH SECT 4.4.1.1 OF ASME Y14.5M-1994
- △ LIGHT PIPE KIT SUPPLIED SEPARATELY, KIT TO BE ATTACHED AFTER SEATING OF CAGE CONNECTOR ASSEMBLY ON BOARD.
- 5. CAGE CONSISTS OF LIGHT PIPE ASSEMBLY AND CAGE/CONNECTOR ASSEMBLY, SUPPLIED UNASSEMBLED.
- △ DATE CODE AND PART NUMBER IN APPROXIMATE AREA SHOWN LABEL ON CAGE ASSEMBLY WILL HAVE PART NUMBER 1658894-1 OR -2.



1658895-18-2
SCALE 3:1

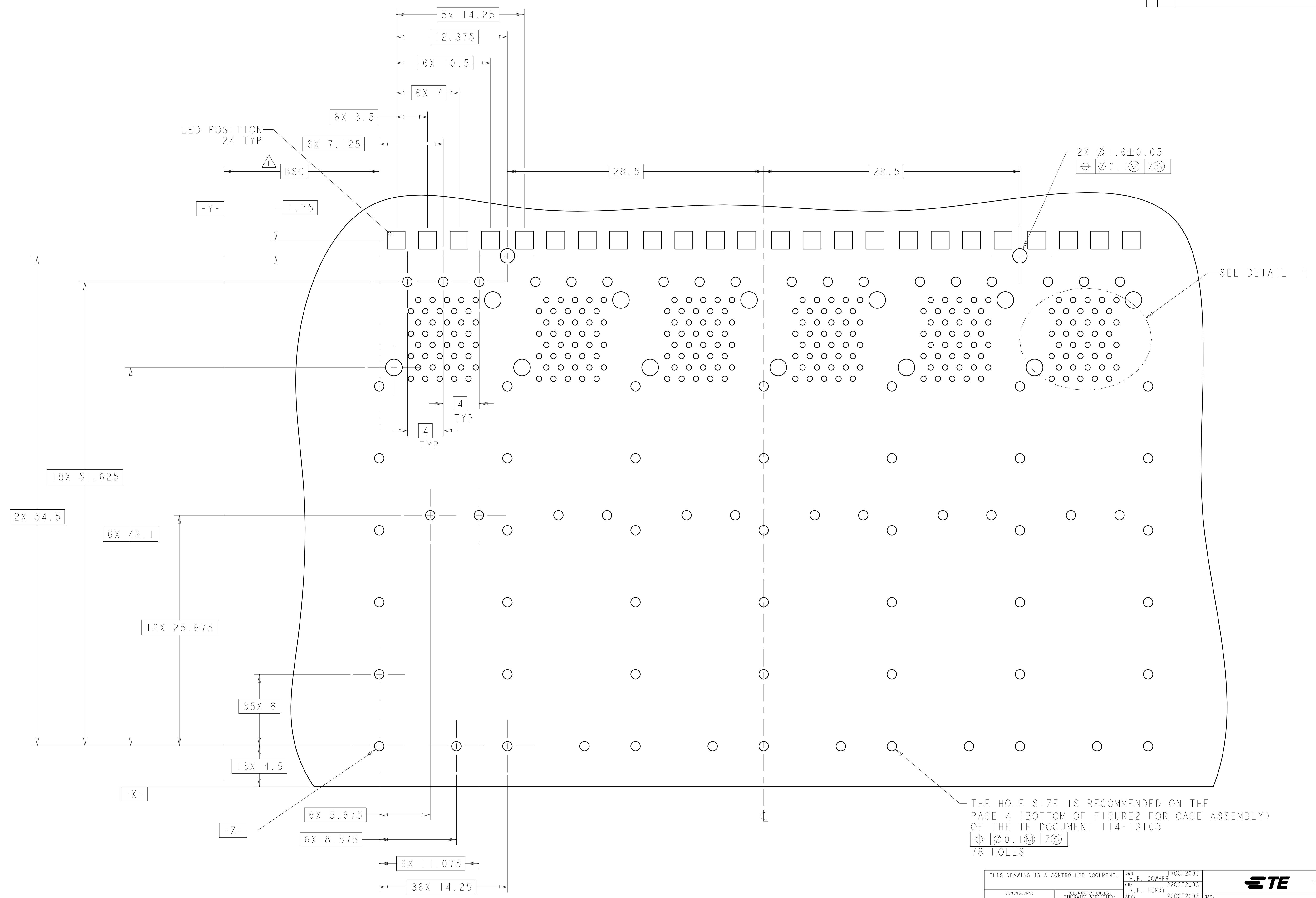
LOC	DIST	REV	DESCRIPTION	DATE	DWN	APVD
ES	00					
C			ECR-08-028454	11NOV2008	AL	SY
D			REVISED PER ECO-14-000886	20FEB2014	JW	SH
D1			REVISED PER ECO-14-010419	11JUL2014	JW	SH
E			REVISED PER ECO-15-013594	22SEP2015	JW	SH

SUPERSEDED BY:
1658895-2

LOC	DIST	REV	DESCRIPTION	DATE	DWN	APVD
ES	00					
C			ECR-08-028454	11NOV2008	AL	SY
D			REVISED PER ECO-14-000886	20FEB2014	JW	SH
D1			REVISED PER ECO-14-010419	11JUL2014	JW	SH
E			REVISED PER ECO-15-013594	22SEP2015	JW	SH

LOC	DIST	REV	DESCRIPTION	DATE	DWN	APVD
ES	00					
C			ECR-08-028454	11NOV2008	AL	SY
D			REVISED PER ECO-14-000886	20FEB2014	JW	SH
D1			REVISED PER ECO-14-010419	11JUL2014	JW	SH
E			REVISED PER ECO-15-013594	22SEP2015	JW	SH

LOC	DIST	REVISIONS			
P	LTN	DESCRIPTION	DATE	DWN	APVD
-	-	SEE SHEET 1	-	-	-



THE HOLE SIZE IS RECOMMENDED ON THE PAGE 4 (BOTTOM OF FIGURE 2 FOR CAGE ASSEMBLY) OF THE TE DOCUMENT 114-13103

$\varnothing 0.1 \text{ (M)} | Z(S)$

78 HOLES

RECOMMENDED PCB CONFIGURATION
SCALE 5:1

THIS DRAWING IS A CONTROLLED DOCUMENT.		DWN: M.E. CONHEB 17OCT2003	TE Connectivity
DIMENSIONS: mm		CHK: R.R. HENRY 22OCT2003	
TOLERANCES UNLESS OTHERWISE SPECIFIED:		APVD: R.R. HENRY 22OCT2003	NAME: 2X6 CONNECTOR ASSEMBLY WITH LIGHT PIPE, PRESS FIT, STACKED SFP
0 PLC ± 0.25	1 PLC ± 0.25	PRODUCT SPEC: 108-2161	SIZE: A1
2 PLC ± 0.1	3 PLC ± 0.1	APPLICATION SPEC: 114-13103	CAGE CODE: 1658895
4 PLC ± 0.1	ANGLES ± 0.1	WEIGHT: -	SCALE: 5:1
MATERIAL: -	FINISH: -	CUSTOMER DRAWING	SHEET 2 OF 3