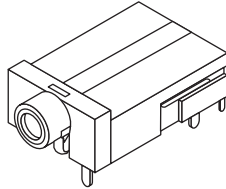


3.5mm Jack

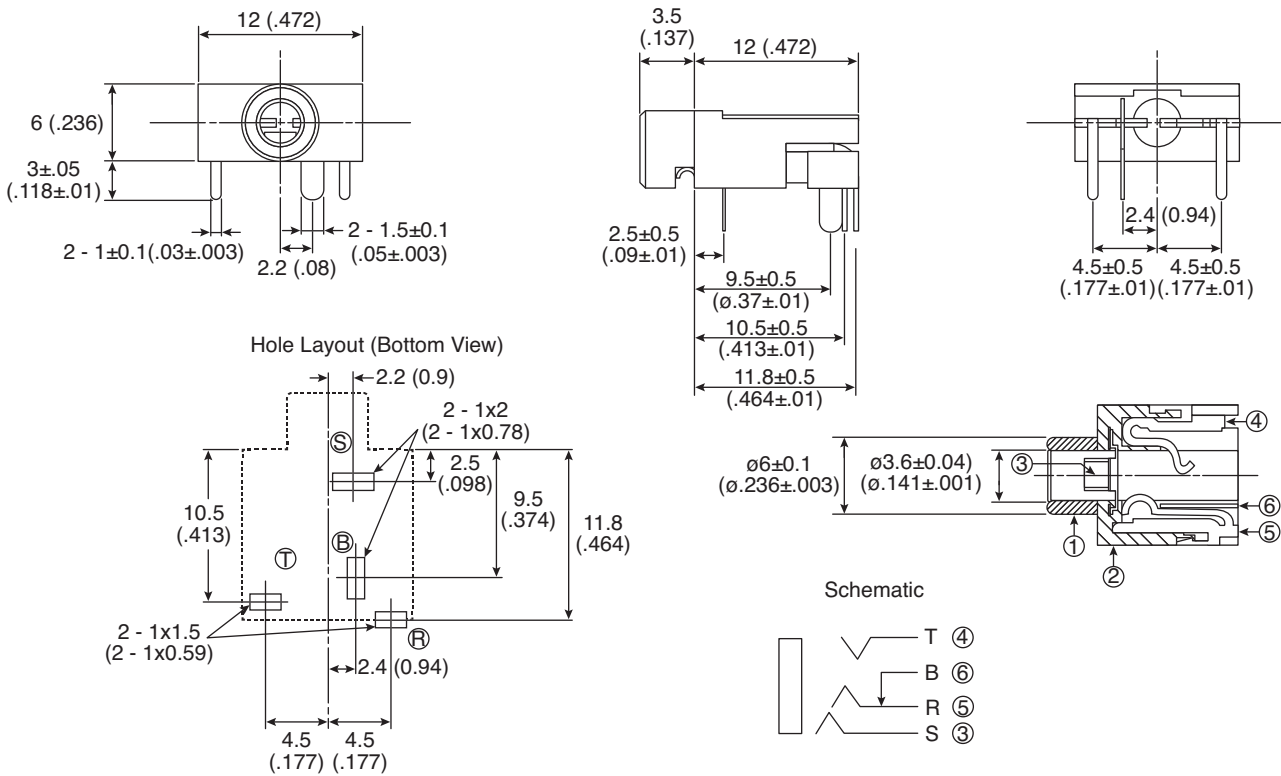
16PJ108-EX

KOBI CONN

3.5mm Jack



LET	Part Name	Material	Qty.	Finish
1	Sleeve Metal	Brass	1	Ni
2	Body	PBT	1	--
3	Sleeve Spring	FAB (t=0.2)	1	Ag
4	Tip Spring	PBS (t=0.5)	1	Ag
5	Ring Spring	PBS (t=0.5)	1	Ag
6	Break-Shunt Spring	Brass (t=0.4)	1	Ag



DIMENSIONS mm (in.)

SPECIFICATIONS	
Contact Resistance:	50mΩ max.
Insulation Resistance:	100MΩ @ 100VDC
Breakdown Voltage:	500VAC for 1 minute
Life Cycle:	5000 Insertions
RoHS Compliant by Exemption	

Date Last Revised: 8/19/08

Available from Mouser Electronics
1-800-346-6873
www.mouser.com

KC-300848

16PJ108-EX