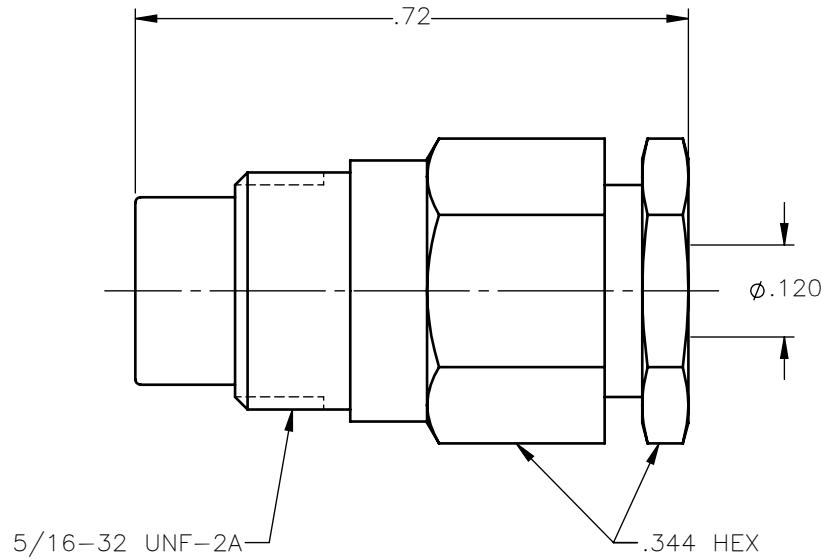


REVISIONS			
REV.	DESCRIPTION	DATE	APPROVED
A	INITIAL RELEASE	03/29/18	C.E.





NOTES:

MATERIALS:

1. INSULATORS = VIRGIN WHITE TEFLON PER ASTM D1710, GRADE 1, TYPE I, CLASS "B".
2. ALL OTHER METAL PARTS = BRASS PER ASTM B16, ALLOY C36000, TEMPER H02.

FINISHES:

1. CONTACT = GOLD PLATE PER MIL G 45204, TYPE II, CLASS 1, GRADE C, OVER .00010 TO .00020 STRESS FREE SULFAMATE NICKEL PER QQ N 290.
2. ALL OTHER METAL PARTS = GOLD PLATE PER MIL G 45204, TYPE II, CLASS 0, GRADE C, OVER .00010 TO .00020 COPPER STRIKE PER MIL C 14550.

UNLESS OTHERWISE SPECIFIED DIMENSIONS ARE IN INCHES TOLERANCES ON	DWN: C.E.	DATE 03/29/18	 <b>Property of Radiall</b> This document cannot be reproduced or communicated to a third party without prior written permission of RADIALL.			
	CHKD:	DATE 03/29/18				
DECIMAL	ANGLE	D.N. J.M.	<b>75 OHM SCREW ON MALE JACK CLAMP TYPE FOR RG-316 &amp; SIMILAR CABLES</b>			
		APVD: J.M.				
REFERENCE:	MATERIALS & FINISHES:		SIZE A	FSCM NO. 19505	DWG NO. 1701-1551-003	REV A
ORIGINATED: C.E. DATE: 03/29/18	SEE NOTES		SCALE 4:1	THIRD ANGLE PROJECTION		SHEET 1 OF 1