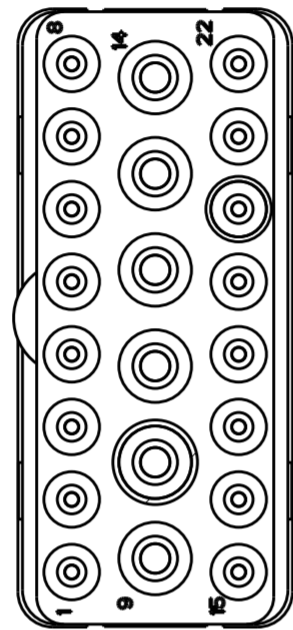
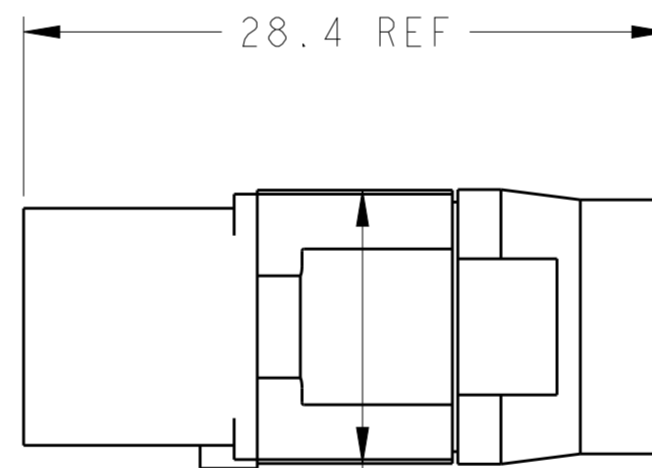
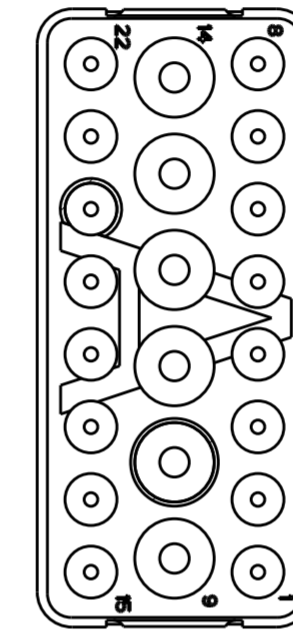
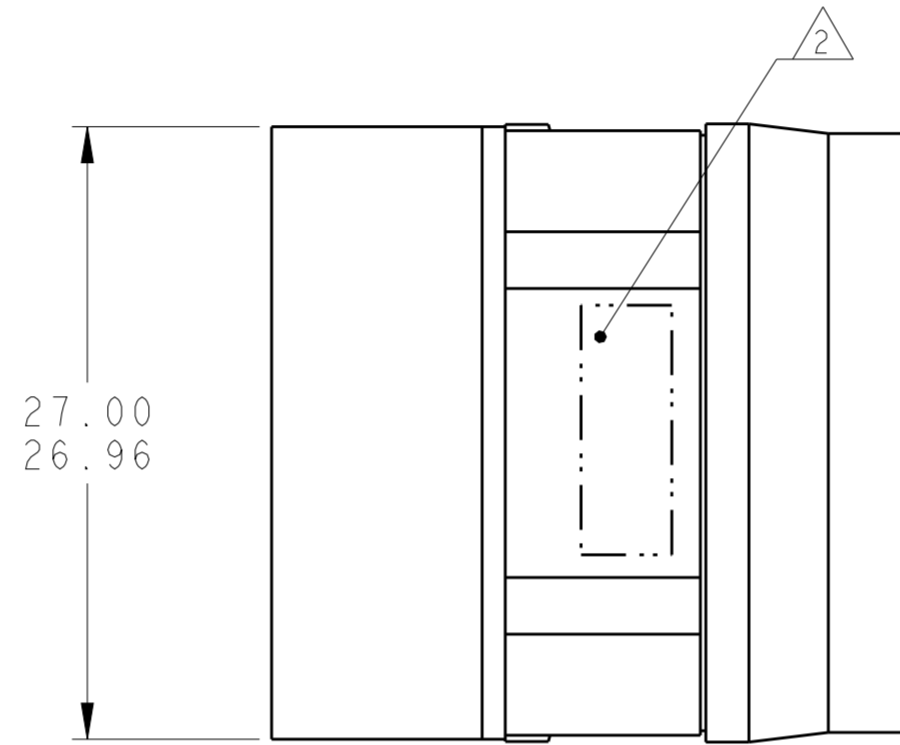


THIS DRAWING IS UNPUBLISHED. RELEASED FOR PUBLICATION  
 © COPYRIGHT - BY - ALL RIGHTS RESERVED.

| LOC |     | DIST                      |          | REVISIONS |      |  |  |
|-----|-----|---------------------------|----------|-----------|------|--|--|
| P   | LTR | DESCRIPTION               | DATE     | DWN       | APVD |  |  |
|     | B   | REVISED PER ECO-12-018187 | 2NOV2012 | CT        | KH   |  |  |
|     |     |                           |          |           |      |  |  |
|     |     |                           |          |           |      |  |  |



MATING FACE



THIS PRODUCT HAS NOT COMPLETED  
 VALIDATION TESTING

1 FRONT & REAR INSULATORS: HIGH-TEMP THERMOPLASTIC OR THERMOSET EPOXY PER ASTM D5948.  
 CONTACT RETENTION CLIPS: STAINLESS STEEL PER AISI 302 OR COPPER ALLOY PER ASTM B194  
 REAR GROMMET: FLUROSILICONE ELASTOMER PER MIL-R-25988 B EXCEPT 4.6.6.1.

2 PART TO BE MARKED WITH TE IDENTIFICATION, TE PART NO.  
 AND DATE CODE: YEAR & WEEK (YY WW) IN APPROXIMATE AREA SHOWN.

3. THIS INSERT CONTAINS: 16 CAVITIES FOR SIZE 20 SOCKET CONTACTS  
 6 CAVITIES FOR SIZE 16 SOCKET CONTACTS

4. THIS PRODUCT IS SOLD BY TYCO ELECTRONICS UNDER A LICENSE FROM RADIALL SA.

|               |                      |             |
|---------------|----------------------|-------------|
| NON-ENV       | GPRBN22SA            | 1738149-2   |
| ENVIRONMENTAL | GPRBE22SA            | 1738149-1   |
| REMARKS       | DESCRIPTIVE PART NO. | PART NUMBER |

|  |  |                            |  |  |
|--|--|----------------------------|--|--|
| THIS DRAWING IS A CONTROLLED DOCUMENT. |  | DWN<br>C.C. THOMAS 10-8-10 | TE Connectivity  |  |
| DIMENSIONS:                            |  | CHK<br>K. HOGAN 10-8-10    |  |  |
| mm                                     | TOLERANCES UNLESS OTHERWISE SPECIFIED: | APVD<br>K. HOGAN 10-8-10   | NAME<br>INSERT ASSEMBLY, SOCKET, ARRANGEMENT 22, KEY A, GPRB |  |
| 0 PLC ±                                | 1 PLC ±                                | PRODUCT SPEC               | SIZE CAGE CODE DRAWING NO RESTRICTED TO                      |  |
| 2 PLC ±                                | 3 PLC ±                                | APPLICATION SPEC           | A200779 C-1738149  |  |
| 4 PLC ±                                | ANGLES ±                               | WEIGHT                     | SCALE 3:1 SHEET 1 OF 1 REV B                                 |  |
| MATERIAL                               | FINISH                                 | CUSTOMER DRAWING           |  |  |