

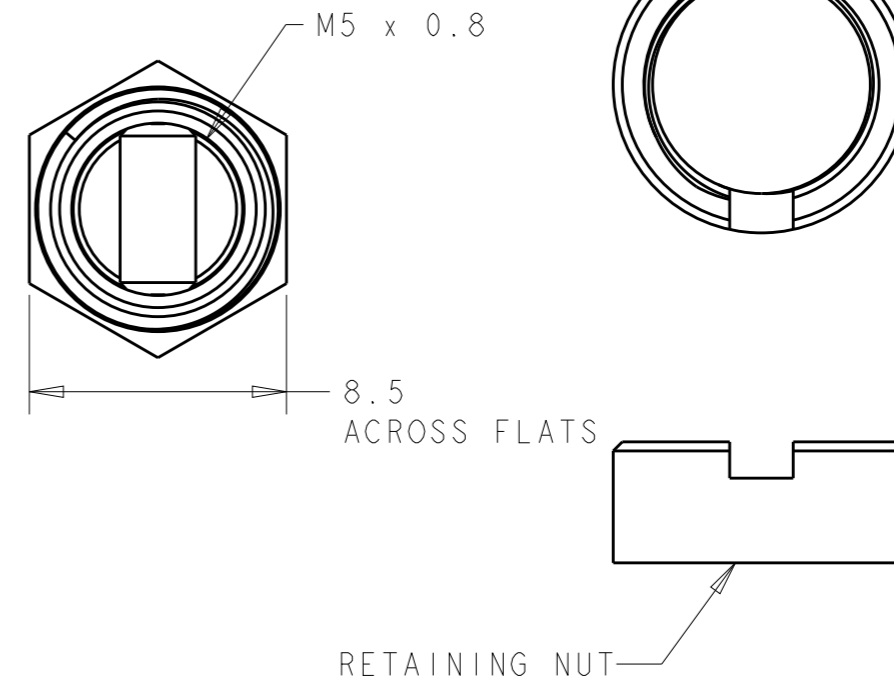
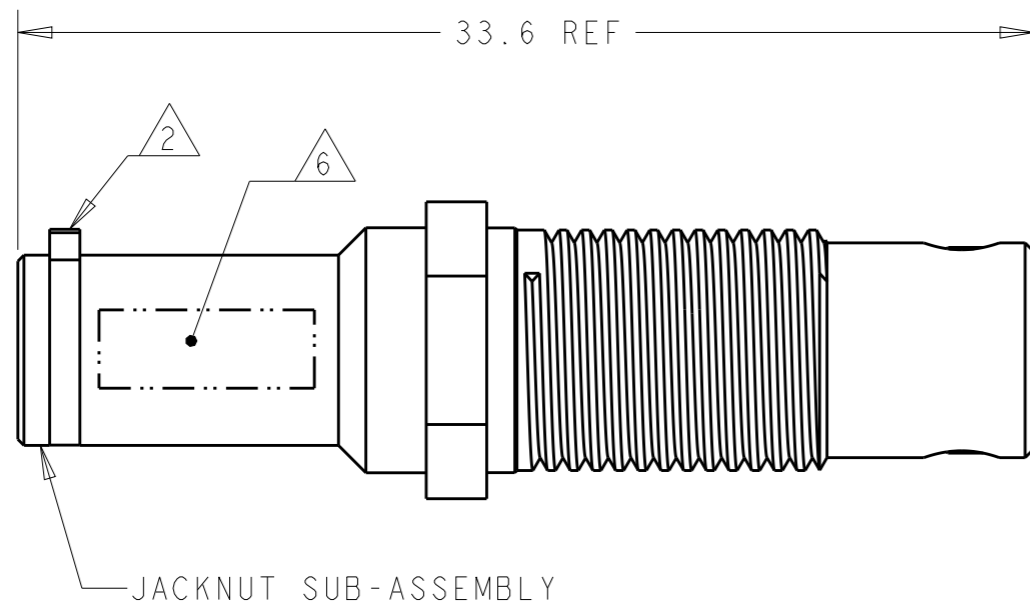
THIS DRAWING IS UNPUBLISHED.

RELEASED FOR PUBLICATION

© COPYRIGHT - BY - ALL RIGHTS RESERVED.

REVISIONS

P	LTR	DESCRIPTION	DATE	DWN	APVD
	A	RELEASED PER ECO 10-024785	12-21-10	CT	BW
	B	REVISED PER ECO-15-010663	26AUG2015	RS	CT



- 1 JACKNUT SLEEVE, PLUNGER, CAP, RETAINING PIN, AND RETAINING NUT: STAINLESS STEEL PER AISI 316 OR AISI 316L
JACKNUT SPRING: STAINLESS STEEL PER AISI 302
- 2 THE KEY OF THE A-F JACKNUT ALIGNS WITH THE CORNER POINTS OF THE POLARIZING HEX.
- 3. THE JACKNUT AND RETAINING NUT ARE SHIPPED UNASSEMBLED. WHEN INSTALLING THESE ON A SHELL ASSEMBLY, LOCTITE® 272 THREADLOCKING ADHESIVE OR EQUIVALENT SHALL BE APPLIED. LOCTITE® IS A REGISTERED TRADEMARK OF HENKEL CORPORATION.
- 4. A SPANNER WRENCH TOOL, TYCO ELECTRONICS PART NUMBER 1738220-1 (WITH 1/4-IN ADAPTER) OR 1738221-1 (WITH T-HANDLE), IS USED TO LOCK THE RETAINING NUT. RECOMMENDED LOCKING TORQUE: 1.5 N-m [13 in-lb].
- 5. THIS PRODUCT IS SOLD BY TYCO ELECTRONICS UNDER A LICENSE FROM RADIALL SA.
- 6 TE IDENTIFICATION LOCATED APPROXIMATELY AS SHOWN.

1738203-1
PART NUMBER

THIS DRAWING IS A CONTROLLED DOCUMENT.		DWN BW	11MAR2005	TE Connectivity													
DIMENSIONS: mm		CHK JPM	11MAR2005														
TOLERANCES UNLESS OTHERWISE SPECIFIED:		APVD JPM	11MAR2005	NAME JACKNUT KIT, A-F GPRB2													
<table border="0"> <tr><td>0 PLC</td><td>±-</td></tr> <tr><td>1 PLC</td><td>±0.1</td></tr> <tr><td>2 PLC</td><td>±-</td></tr> <tr><td>3 PLC</td><td>±-</td></tr> <tr><td>4 PLC</td><td>±-</td></tr> <tr><td>ANGLES</td><td>±-</td></tr> </table>		0 PLC	±-	1 PLC	±0.1	2 PLC	±-	3 PLC	±-	4 PLC	±-	ANGLES	±-	PRODUCT SPEC		SIZE	
0 PLC	±-																
1 PLC	±0.1																
2 PLC	±-																
3 PLC	±-																
4 PLC	±-																
ANGLES	±-																
MATERIAL		APPLICATION SPEC		CAGE CODE													
FINISH		WEIGHT		DRAWING NO													
-		-		A300779													
-		-		G=1738203													
-		-		RESTRICTED TO													
-		-		-													
-		-		SCALE 4:1													
-		-		SHEET 1 OF 1													
-		-		REV B													