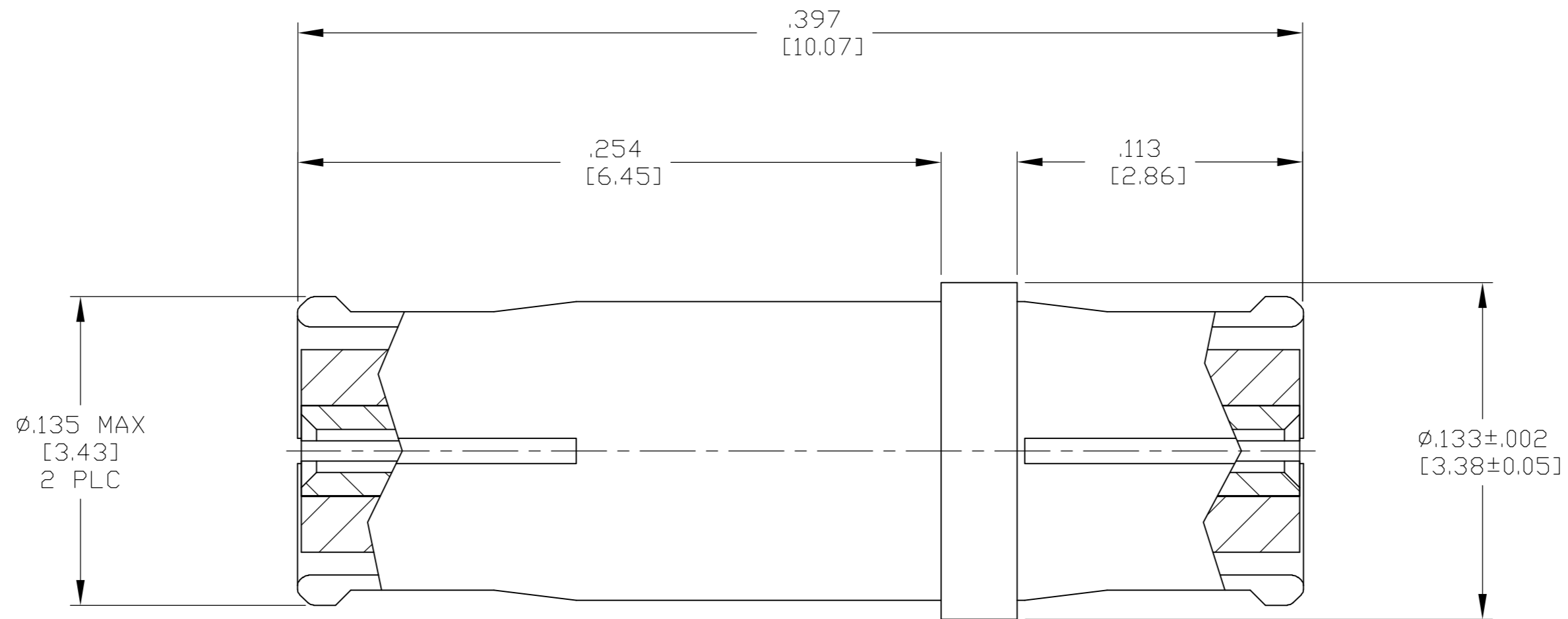


THIS DRAWING IS UNPUBLISHED. RELEASED FOR PUBLICATION		
© COPYRIGHT BY TYCO ELECTRONICS CORPORATION. ALL RIGHTS RESERVED.		
OUTER CONTACT	BERYLLIUM COPPER PER ASTM-B196, ALLOY C17300, CONDITION H	GOLD PLATE PER ASTM-B-488
DIELECTRIC	TFE FLUOROCARBON PER ASTM-D-1457	N/A
COMPONENT	MATERIAL	FINISH

LOC	DIST	REVISIONS					
DF	X0	P	LTR	DESCRIPTION	DATE	DWN	APVD
		0		RELEASED	4-8-05	CT	BM



1. SPECIFICATIONS SHOWN DERIVED FROM TESTING USING THIS ADAPTER AND A TEST FIXTURE AS SPECIFIED IN DSCC SPEC 94007. VSWR: DC-23GHz: 1.10:1 MAX; 23-26.5GHz: 1.15:1 MAX; 26.5-40GHz: 1.7:1 MAX.
2. INTERFACE PER MIL-STD-348A, FIGURE 326-1; BOTH ENDS.
3. REF DSCC DRAWING NUMBER: 94007ZCG-2

ELECTRICAL	MECHANICAL	ENVIRONMENTAL
NOMINAL IMPEDANCE (OHMS) <u>50 ± 1</u>	Force to Engage (Lbs MAX) <u>10.0</u>	TEMPERATURE RATING <u>-65° TO +125°C</u>
Frequency Range (GHz) <u>DC to 40GHz</u>	Disengage (In Lbs MIN) <u>2.0</u>	Vibration MIL-STD-202, Method 204, Condition D
Volt Rating (VRMS MAX) @ Sea Level <u>335</u>	Center Contact Retention (Lbs MIN) <u>1.5</u>	Thermal Shock MIL-STD-202, Method 107, Condition B
VSWR <u>1</u>	RDIAL MISALIGNMENT: <u>±.020</u>	Corrosion - MIL-STD-202, Method 101, Condition B
RF Leakage (2-3GHz) <u>-80dB Min</u>	Axial Misalignment: <u>.000/.010</u>	Moisture Resistance: MIL-STS-202, Method 106.
Insertion Loss <u>.010</u> [F GHz dB MIN.] <u>1</u>	Durability: <u>100 cycles</u>	
Corona, 70,000 Ft (VRMS MIN) <u>190</u>		
Dielectric Withstanding Voltage (VRMS MIN) @ Sea Level <u>500</u>		
Contact Resistance (Milliohms MAX) Center Contact (Mated Pair) <u>6.0</u>		
RF High Potential @ Sea Level (VRMS MIN @ 5 MHz) <u>325</u>		
I.R. (Megohms MIN) <u>5,000</u>		

1757023-1  
PART NUMBER

THIS DRAWING IS A CONTROLLED DOCUMENT.		DWN C.C.THOMAS 4-7-05	Tyco Electronics Corporation Harrisburg, Pa 17105-3608	
DIMENSIONS: INCHES [mm]		CHK B.MOYER 4-8-05		
TOLERANCES UNLESS OTHERWISE SPECIFIED:		APVD B. MOYER 4-8-05	NAME JACK TO JACK ADAPTER, SMP	
0 PLC ± -		PRODUCT SPEC	SIZE A2	
1 PLC ± -		APPLICATION SPEC	CAGE CODE 00779	DRAWING NO C=1757023
2 PLC ± -			RESTRICTED TO	
3 PLC ± .001 [0.03]				
4 PLC ± -				
ANGLES ± -				
FINISH SEE TABLE		WEIGHT -	SCALE 20:1	SHEET 1 OF 1
MATERIAL SEE TABLE		CUSTOMER DRAWING	REV 0	