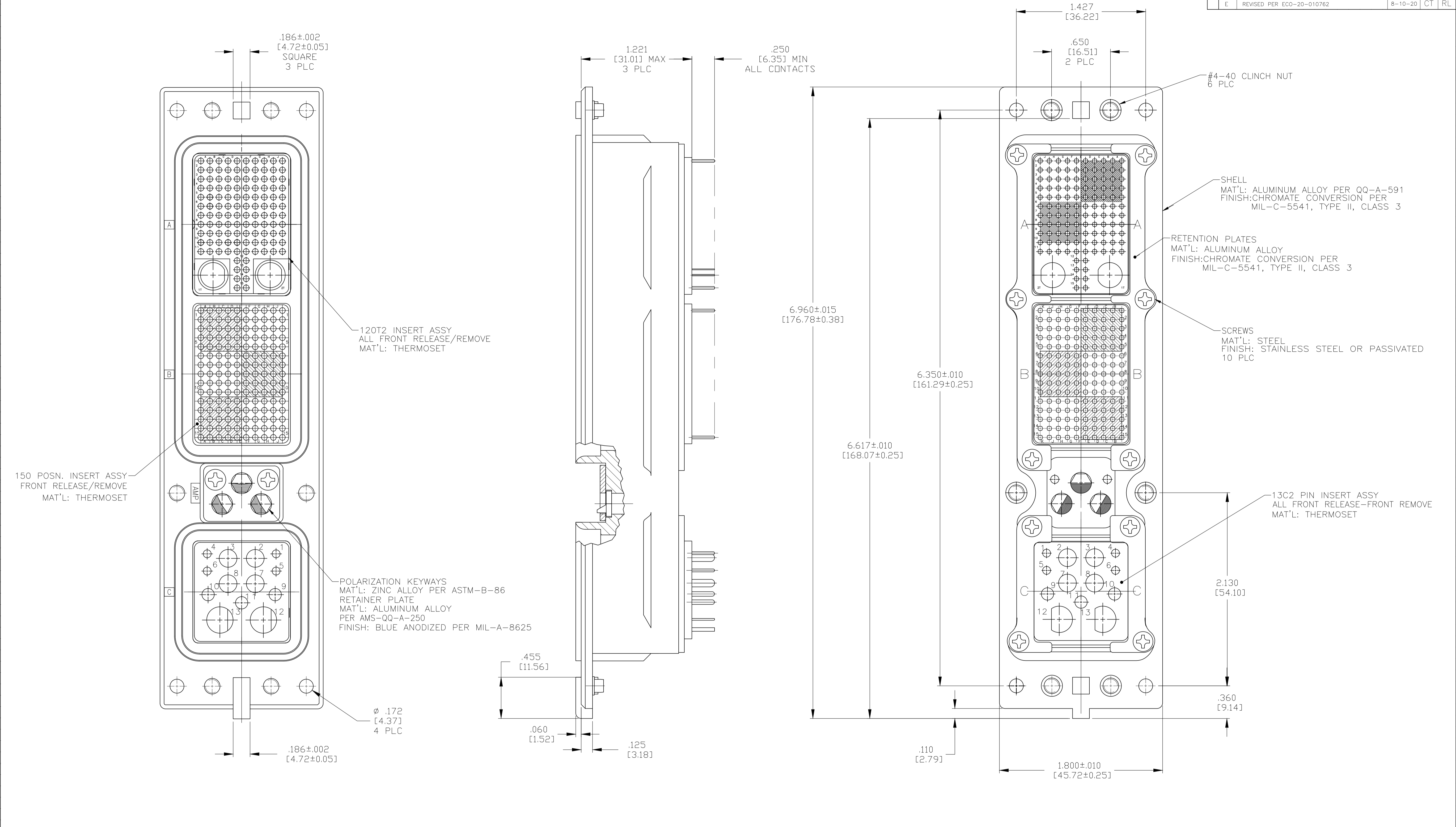


REVISIONS				
P	LTR	DESCRIPTION	DATE	BY
E		REVISED PER ECO-20-010762	8-10-20	CT RL



- CONNECTOR DIMENSIONS ARE PER ARINC 600 SPECIFICATION.
- CONNECTOR IS SUPPLIED WITH CONTACTS (PER TABLE) ASSEMBLED AS SHOWN.
- CONNECTOR IS SUPPLIED WITH A DUST COVER INSTALLED (NOT SHOWN).
- CONTACTS NOT SHOWN IN FRONT & REAR VIEWS FOR CLARITY.

KEYING POSITION	CONTACTS INCLUDED AND INSTALLED	PART NUMBER
12	MODULE A 211431-4 (SIZE 22 POSTED; QTY=118) 448540-2 (SIZE 8 COAX POSTED; QTY=2) MODULE B 211431-4 (SIZE 22 POSTED; QTY=150) MODULE C 1-448138-5 (SIZE 20 POSTED; QTY=4) 1-448139-1 (SIZE 16 POSTED; QTY=3) 448140-3 (SIZE 12 POSTED; QTY=4) 1484201-1 (SIZE 5 POSTED COAX; QTY=2)	1757875-1

THIS DRAWING IS A CONTROLLED DOCUMENT.

DIMENSIONS: INCHES	TOLERANCES UNLESS OTHERWISE SPECIFIED:	DIN C.C.THOMAS 5-23-05	APVD K.HOGAN 5-23-05	NAME
0 PLC ± -	1 PLC ± -	2 PLC ± -	3 PLC ± -	4 PLC ± .005 [0.13]
ANGLES ± -				
MATERIAL	FINISH	WEIGHT 0.000000	SIZE A1	CAGE CODE 00779
		DRAWING NO. 1757875	RESTRICTED TO	
		CUSTOMER DRAWING	SCALE 2:1	SHEET 1 OF 1 REV E

STE TE Connectivity

RECEPTACLE ASSY, SIZE 2, ARINC 600 (120T2/150/13C2)