

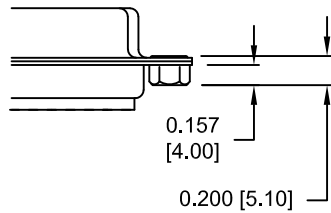
DESCRIPTION: CLINCH NUT HARDWARE

ALL CLINCH-NUTS ARE 4-40 INTERNAL THREADS

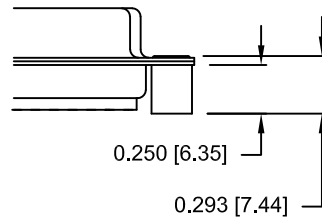
UNITS = inch[mm]

TOLERANCE:
ALL DIMENSIONS ARE ±0.010

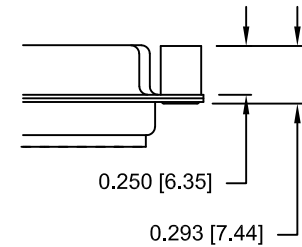
01X 0.157" (SOLDER SIDE)




02X 0.250" (SOLDER SIDE)



03X..... 0.250" (MATING SIDE)



DO NOT SCALE FROM DRAWING

	THESE DRAWINGS AND SPECIFICATIONS ARE THE PROPERTY OF NorComp AND SHALL NOT BE REPRODUCED, COPIED OR USED AS THE BASIS FOR THE MANUFACTURE OF SALE OF APPARATUS WITHOUT WRITTEN PERMISSION.		DRAWN: J KADEL	DATE: 07-16-18
	SCALE: NTS		SHEET 2	OF 2
NorComp		DWG NO. 180-YYY-17YLYY0		

RoHS COMPLIANT