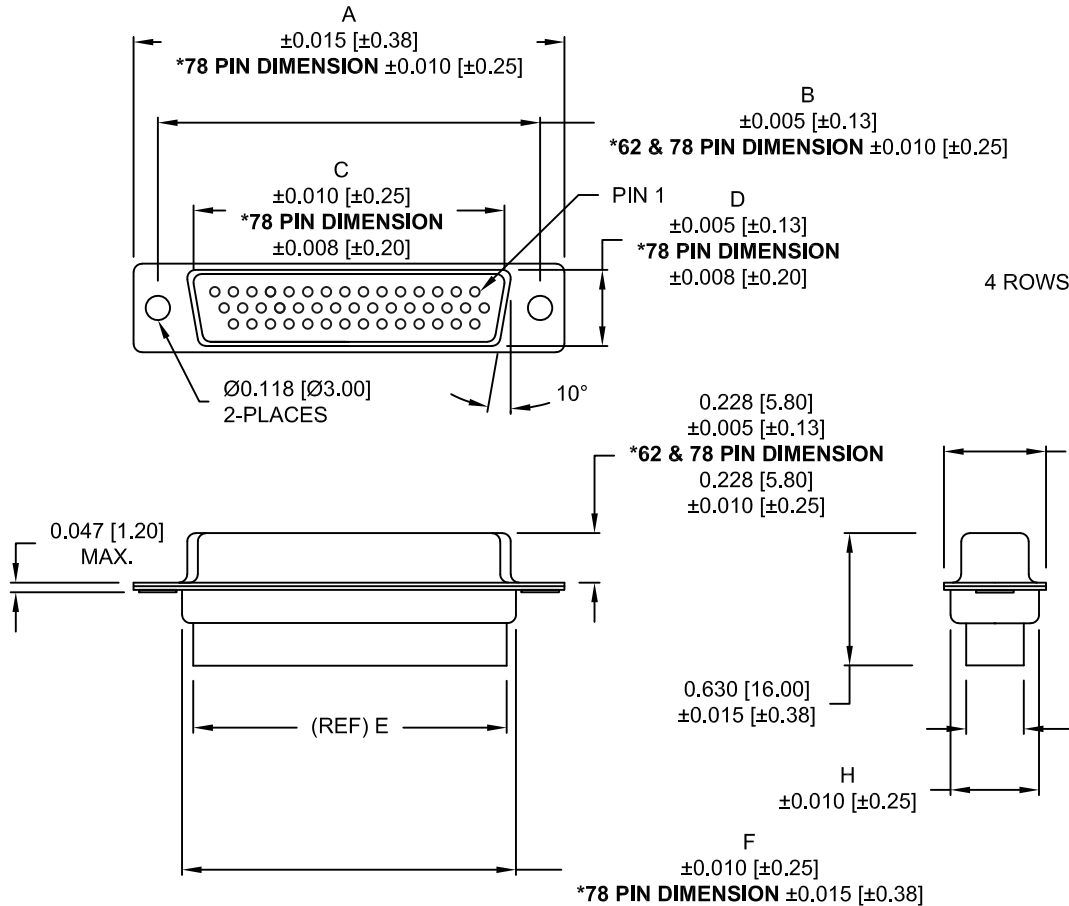
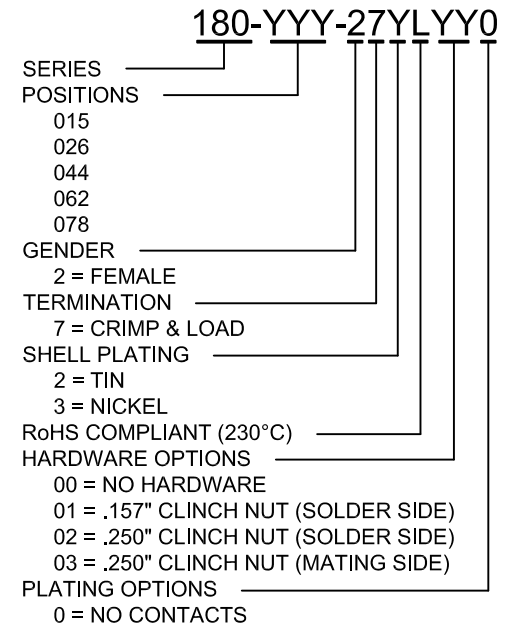


DESCRIPTION: HIGH DENSITY FEMALE - CRIMP AND LOAD

**\*\*NOTE: CONTACTS MUST BE PURCHASED SEPARATELY\*\***



No. OF PINS	DIMENSIONS							
	A	B	C	D	E	F	G	H
15	1.213	0.984	0.643	0.311	0.610	0.759	0.494	0.421
	30.81	24.99	16.33	7.90	15.50	19.28	12.55	10.70
26	1.541	1.312	0.970	0.311	0.964	1.089	0.494	0.421
	39.14	33.32	24.66	7.90	24.50	27.65	12.55	10.70
44	2.088	1.852	1.511	0.311	1.494	1.618	0.494	0.421
	53.04	47.04	38.38	7.90	37.95	41.10	12.55	10.70
62	2.736	2.500	2.157	0.311	2.142	2.262	0.494	0.421
	69.50	63.50	54.80	7.90	54.40	57.46	12.55	10.70
78	2.644	2.406	2.061	0.422	2.035	2.169	0.605	0.527
	67.16	61.11	52.34	10.72	51.70	55.10	15.37	13.40



**MATERIAL:**

SHELL: STEEL, TIN OR NICKEL PLATED  
 INSULATOR: PBT, UL 94V-O RATED,  
 +30% FIBER-GLASS

**ELECTRICAL:**

INSULATION RESISTANCE: 1,000 MOhms MIN.  
 VOLTAGE: 500VAC FOR 1 MINUTE  
 TEMPERATURE: -50° C TO 100° C

UNITS = inch[mm]

**DO NOT SCALE FROM DRAWING**



THESE DRAWINGS AND SPECIFICATIONS ARE THE PROPERTY OF NorComp AND SHALL NOT BE REPRODUCED, COPIED OR USED AS THE BASIS FOR THE MANUFACTURE OF SALE OF APPARATUS WITHOUT WRITTEN PERMISSION.

DRAWN: PAM JENKINS		DATE: 7-19-05	
SCALE: NTS	SHEET 1	OF 2	REV 19
DWG NO. 180-YYY-27YLYY0			

**RoHS COMPLIANT**

**NorComp**

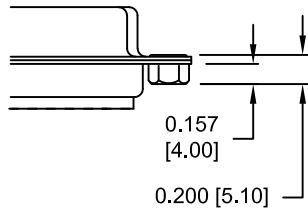
DESCRIPTION: CLINCH NUT HARDWARE

TOLERANCE:  
ALL DIMENSIONS ARE  $\pm 0.010$

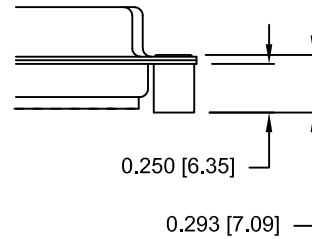
### ALL CLINCH-NUTS ARE 4-40 INTERNAL THREADS

UNITS = inch[mm]

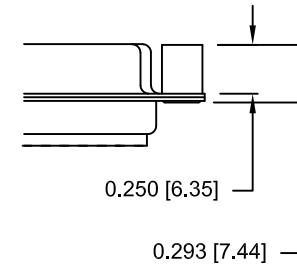
01X ..... 0.157" (SOLDER SIDE)



02X ..... 0.250" (SOLDER SIDE)



03X..... 0.250" (MATING SIDE)



DO NOT SCALE FROM DRAWING



THESE DRAWINGS AND SPECIFICATIONS ARE THE PROPERTY OF NorComp AND SHALL NOT BE REPRODUCED, COPIED OR USED AS THE BASIS FOR THE MANUFACTURE OF SALE OF APPARATUS WITHOUT WRITTEN PERMISSION.

DRAWN:  
PAM JENKINS

DATE:  
7-19-05

# NorComp

SCALE: NTS SHEET 2 OF 2 REV 19

DWG NO. 180-YYY-27YLYY0

## RoHS COMPLIANT