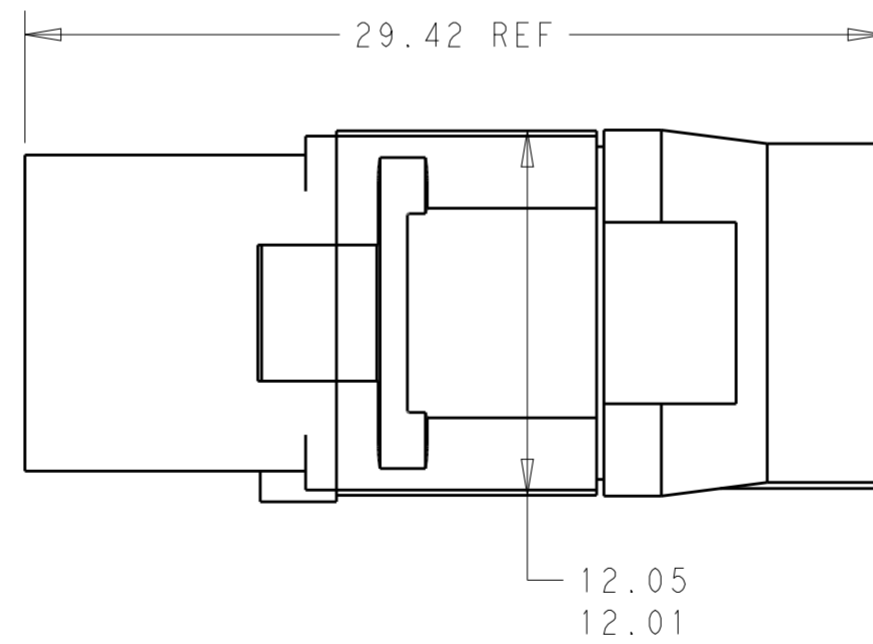
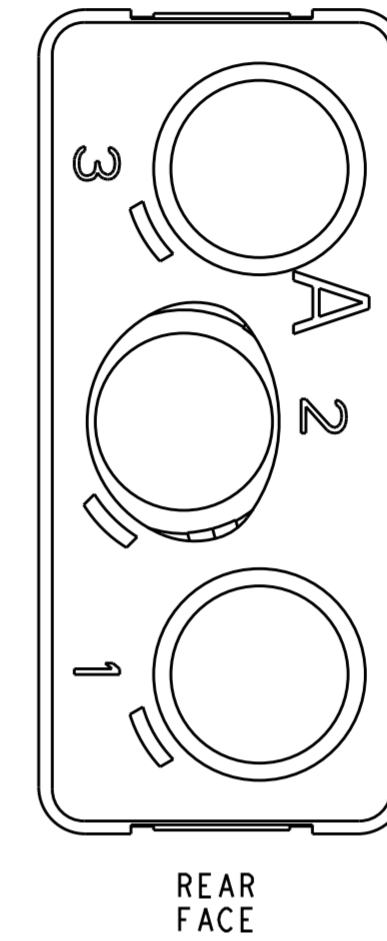
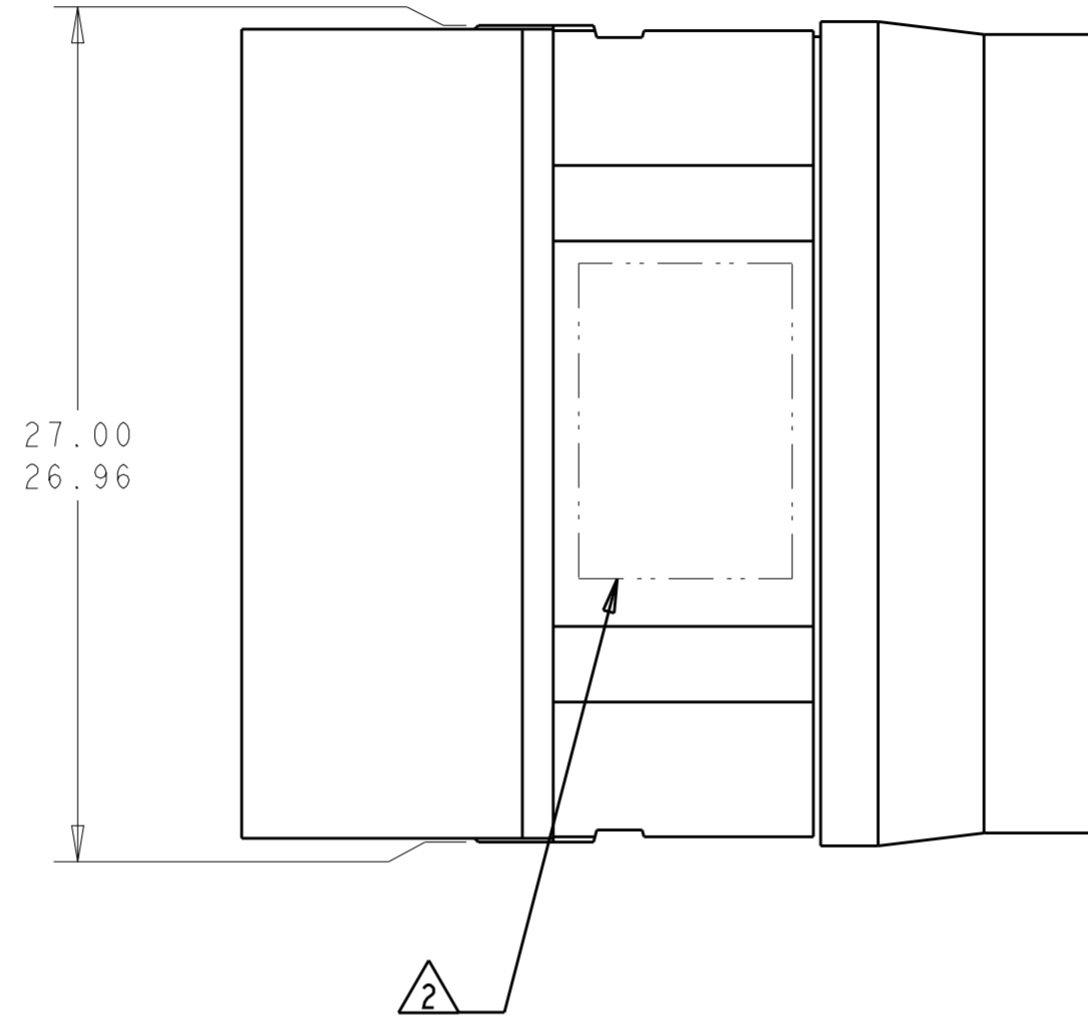
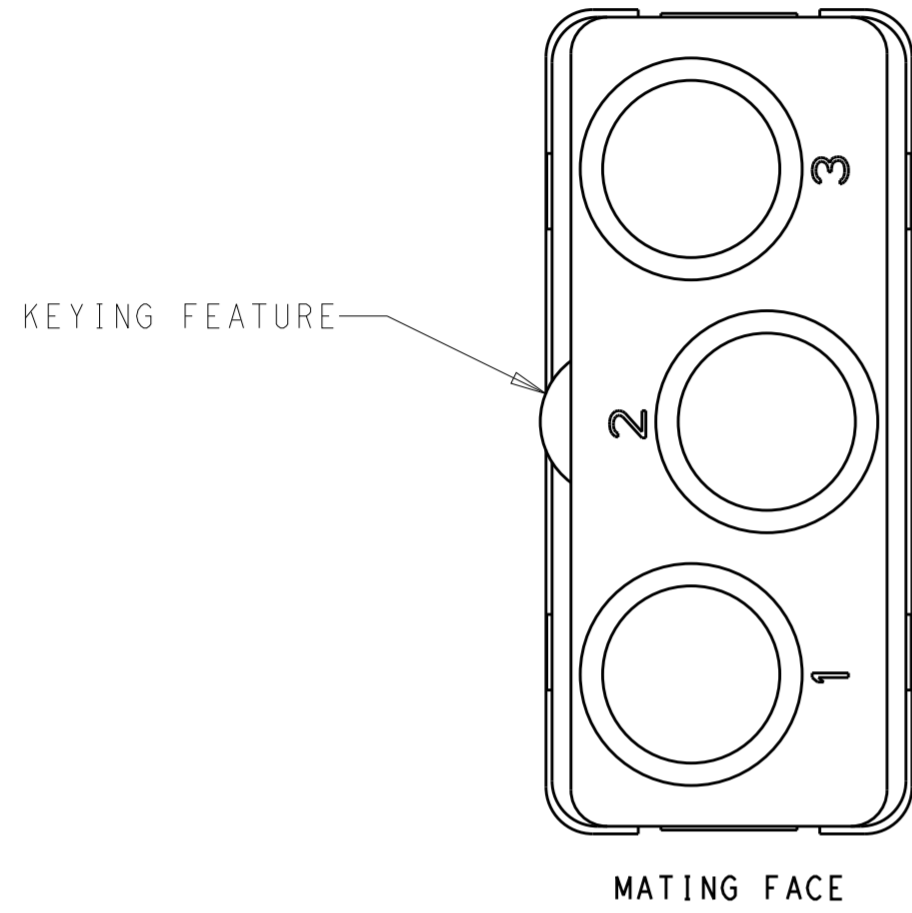


THIS DRAWING IS UNPUBLISHED. RELEASED FOR PUBLICATION 20
 © COPYRIGHT 20 BY - ALL RIGHTS RESERVED.

REVISIONS					
P	LTR	DESCRIPTION	DATE	DWN	APVD
A		REV PER ECO 14-002245	2-21-14	CT	KH



1 MATERIALS:
 FRONT & REAR INSULATORS: HIGH TEMP THERMOPLASTIC OR THERMOSET EPOXY PER ASTM D5948
 CONTACT RETENTION CLIPS: COPPER ALLOY PER ASTM B194 OR STAINLESS STEEL PER ASTM A666
 REAR GROMMET: FLUOROSILICONE ELASTOMER PER MIL-R-25988 B, EXCEPT 4.6.6.1

2 TE LOGO, PART NO AND DATE CODE (YY WW) MARKED IN THIS AREA. (TE PART NUMBER MAY BE MARKED EITHER ON INSULATOR OR GROMMET)

- 3. DESCRIPTIVE PART NO.: GPRBE3Q3SA
THIS INSERT CONTAINS 3 CAVITIES FOR SIZE 8 QUADRAX SOCKET CONTACTS
- 4. THIS PRODUCT IS SOLD BY TE CONNECTIVITY UNDER A LICENSE FROM RADIALL SA.

1877696-1
PART NO.

THIS DRAWING IS A CONTROLLED DOCUMENT.		DWN 19DEC2013 C.C. THOMAS	TE Connectivity	
DIMENSIONS: mm		CHK K HOGAN 12-19-13		
TOLERANCES UNLESS OTHERWISE SPECIFIED:		APVD K HOGAN 12-19-13	NAME	
0 PLC ±	1 PLC ±	PRODUCT SPEC	INSERT ASSEMBLY, SOCKET, ARR 303, KEY A, GPRB, ENVIRONMENTAL	
2 PLC ±	3 PLC ±	APPLICATION SPEC	SIZE	CAGE CODE
4 PLC ±	ANGLES ±	FINISH	A2	-
MATERIAL	1	WEIGHT	DRAWING NO	RESTRICTED TO
-	-	-	G-1877696	-
Customer Drawing			SCALE 4:1	SHEET 1 OF 1