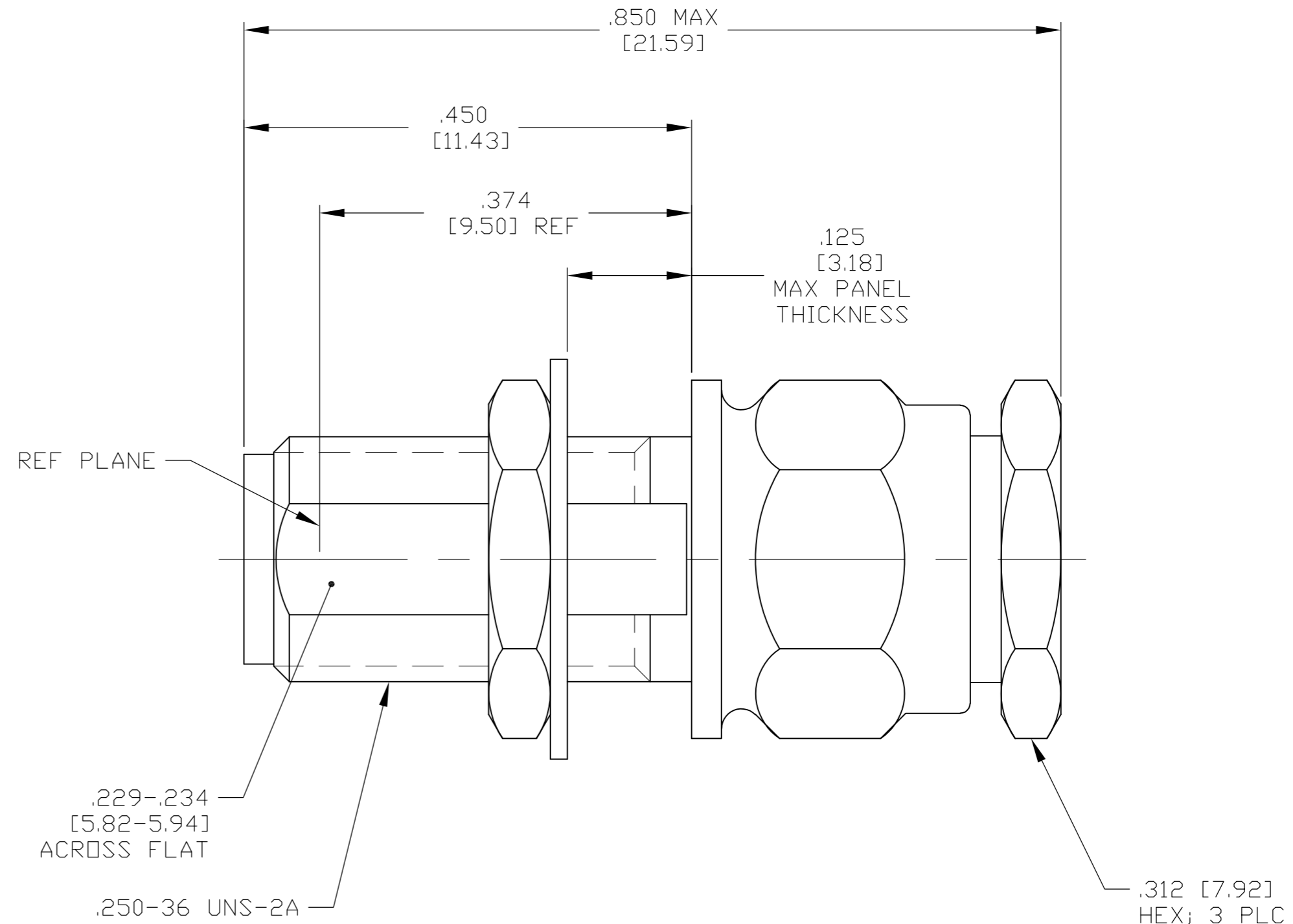


THIS DRAWING IS UNPUBLISHED. RELEASED FOR PUBLICATION
 © COPYRIGHT - By - ALL RIGHTS RESERVED.

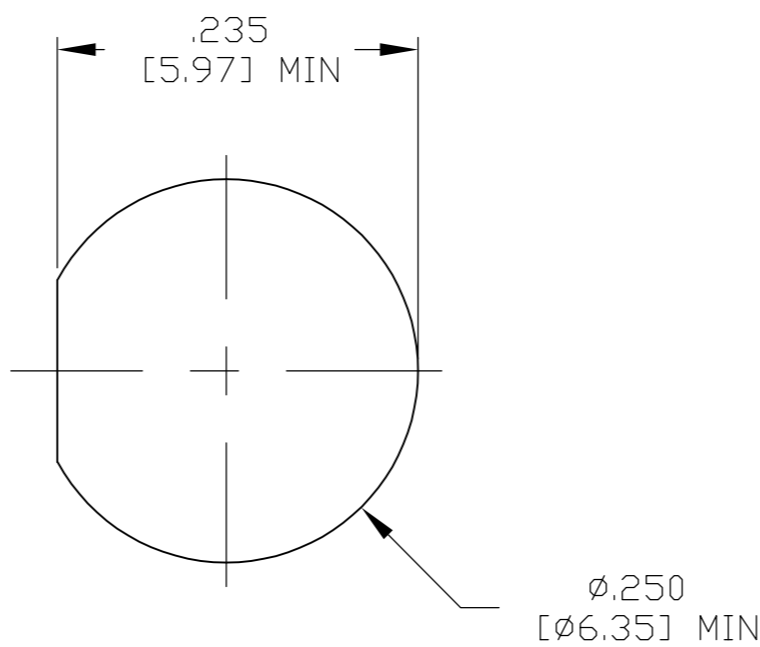
LOC		DIST		REVISIONS			
P	LTR	DESCRIPTION		DATE	DWN	APVD	
	B	RELEASED PER ECO 13-012087		7-29-13	CT	DW	

COMPONENT	MATERIAL	FINISH
HOUSING CLAMP NUT MOUNTING NUT LOCKWASHER	STAINLESS STEEL PER ASTM-A484 AND ASTM- A582, TYPE 303	PASSIVATE PER SAE-AMS-2700
DIELECTRIC	TFE FLUOROCARBON PER ASTM-D-1457, MIL-P-19468, AND FED. SPEC L-P-403	N/A
CENTER CONTACT	BERYLLIUM COPPER PER ASTM-B196, ALLOY 173	GOLD PLATE PER ASTM-B-488 OVER COPPER PLATE PER MIL-C-14550
COLLAR	BRASS PER ASTM-B-16 COMP. 360	GOLD PLATE PER ASTM-B-488 OVER COPPER PLATE PER MIL-C-14550



1. CAPTURED CENTER CONTACT
2. DESIGNED FOR USE WITH RG-195/U OR OTHER CABLES HAVING SIMILAR COMPONENT DIAMETERS.
3. PART SHOWN ASSEMBLED FOR REFERENCE ONLY SHIPPED UNASSEMBLED

MECHANICAL	ENVIRONMENTAL
Interface Dimensions <u>MIL-STD-348</u> <u>fig. 310.2</u>	Temperature Rating <u>-65°C TO +165°C</u>
Recommended Mating Torque <u>N/A</u>	Vibration <u>MIL-STD-202,</u> <u>Method 204, Cond. D</u>
Mating Characteristics: Insertion (MAX Lbs) <u>3.0</u> Withdrawal (MIN Oz) <u>1.0</u>	Shock <u>MIL-STD-202,</u> <u>Method 213, Cond. I</u>
Force to Engage (In/Lbs MAX) <u>2.0</u>	Thermal shock <u>MIL-STD-202,</u> <u>Method 107, Cond. B</u> <u>except high Temp.</u>
Force to Disengage (In/Lbs MAX) <u>2.0</u>	<u>SHALL BE +85°C</u>
Center Contact Captivation: Axial <u>6 lbs min.</u>	Moisture Resistance <u>MIL-STD-202,</u> <u>Method 106, insulation resistance</u> <u>shall be at least 200 megohms</u> <u>within 5 minutes after removal</u> <u>from humidity.</u>
Radial <u>N/A</u>	Corrosion <u>MIL-STD-202,</u> <u>Method 101, Cond. B (Salt Spray)</u>
Cable Retention Axial Lbs <u>30</u> Torque Inch Ounces <u>N/A</u>	
Weight (Grams) <u>TBD</u>	



RECOMMENDED
MOUNTING HOLE

THIS DRAWING IS A CONTROLLED DOCUMENT.		DWN C.C.THOMAS 7-29-13																				
DIMENSIONS: INCHES [mm]		CHK D.WILSON 7-29-13																				
TOLERANCES UNLESS OTHERWISE SPECIFIED:		APVD D.WILSON 7-29-13	NAME SMA BULKHEAD JACK ASSY, SOLDER CLAMP ATTACHMENT																			
<table border="1"> <tr><td>0 PLC</td><td>±</td><td>-</td></tr> <tr><td>1 PLC</td><td>±</td><td>-</td></tr> <tr><td>2 PLC</td><td>±</td><td>-</td></tr> <tr><td>3 PLC</td><td>±</td><td>.005 [0.13]</td></tr> <tr><td>4 PLC</td><td>±</td><td>-</td></tr> <tr><td>ANGLES</td><td></td><td>± -</td></tr> </table>		0 PLC	±	-	1 PLC	±	-	2 PLC	±	-	3 PLC	±	.005 [0.13]	4 PLC	±	-	ANGLES		± -	APPLICATION SPEC 408-04938	SIZE A2	CAGE CODE 00779
0 PLC	±	-																				
1 PLC	±	-																				
2 PLC	±	-																				
3 PLC	±	.005 [0.13]																				
4 PLC	±	-																				
ANGLES		± -																				
MATERIAL SEE TABLE	FINISH SEE TABLE	WEIGHT -	DRAWING NO 1883504	RESTRICTED TO -																		
CUSTOMER DRAWING			SCALE 8:1	SHEET 1 of 1																		
			REV B																			

1883504-1
PART NUMBER