

REVISIONS					
P	LTR	DESCRIPTION	DATE	DMN	APVD
G		REVISED PER ECO-17-015513	19DEC2017	PHM	CT

- CONNECTOR DIMENSIONS ARE PER ARINC 600 SPECIFICATION.
- CONNECTOR IS SUPPLIED WITH CONTACTS AS LISTED IN TABLE.
- KEYING SHOWN IN POSITION "01" FOR ILLUSTRATION ONLY. CONNECTORS SHIPPED WITH KEYING INSTALLED IN POSITION PER TABLE. FOR POSITION "00" KEYING HARDWARE SHIPPED UNASSEMBLED.
- WITH CONTACTS FULLY SEATED TO REAR OF CAVITY.
- CONTACTS ARE SOLDER COATED WITH Sn60 OR Sn63 SOLDER.
- DUST COVER INSTALLED FOR SHIPPING.

COMPONENT	MATERIAL	FINISH
SHELL	DIE CAST ALUMINUM PER ASTM-B-85	ELECTROLESS NICKEL PER MIL-C-26074
INSERT RETENTION PLATES	ALUMINUM ALLOY PER ASTM-B-209	ELECTROLESS NICKEL PER MIL-C-26074
SCREWS	STEEL OR STAINLESS STEEL	PASSIVATED -2 PASSIVATED SST
POLARIZING KEYS	ZINC ALLOY PER ASTM-B-86	-
INSERTS	THERMOSET OR THERMOPLASTIC PPS PER MIL-M-24519	-
POLARIZING KEY RETAINING PLATE	ALUMINUM ALLOY PER ASTM-B-209	BLUE ANODIZED PER MIL-A-8625
-	-	-

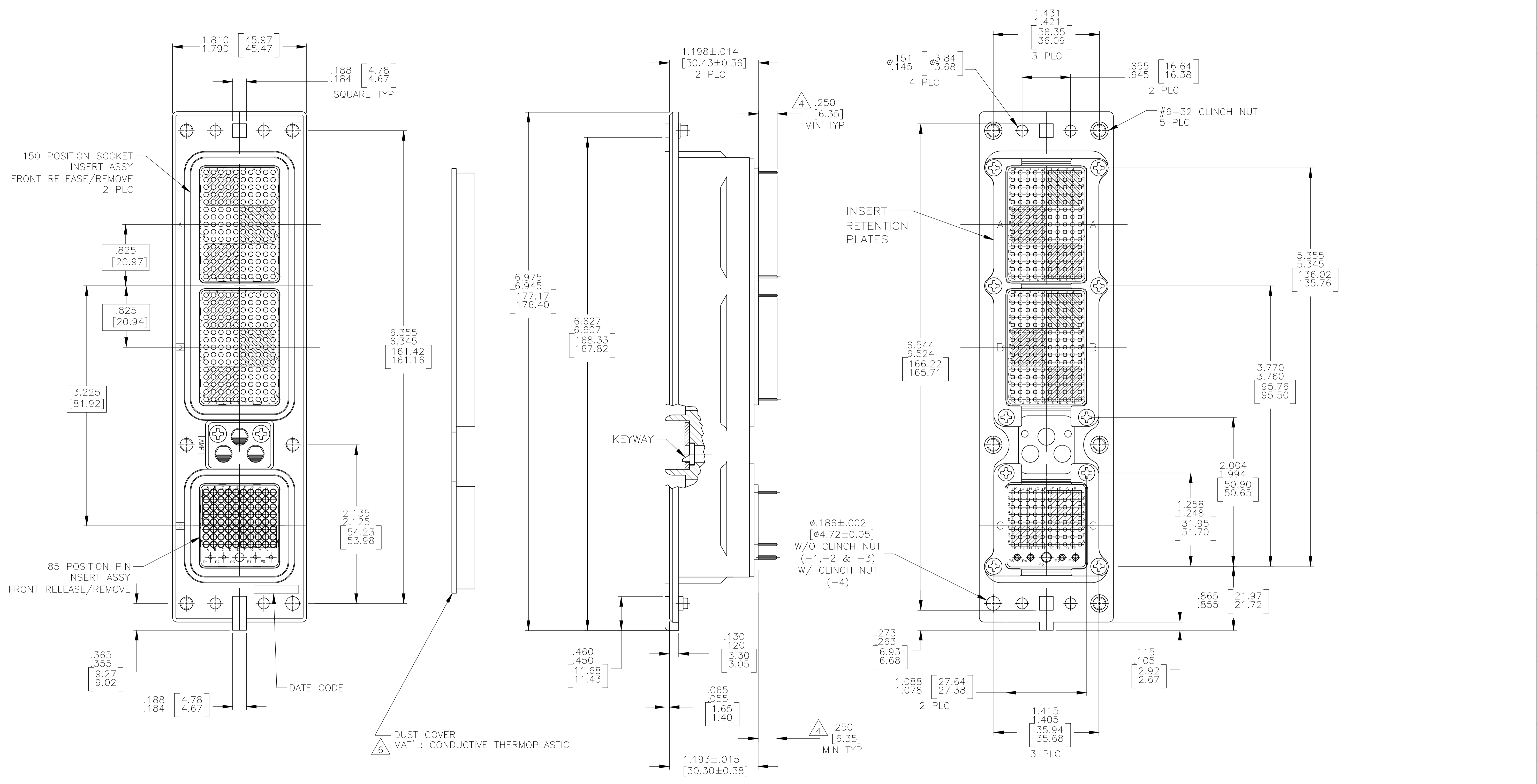
KEYING POSITION	CONTACTS INCLUDED AND INSTALLED	PART NUMBER
47	MODULE A 1-211431-5 (SIZE 22 POSTED; QTY=150) MODULE B 1-211431-5 (SIZE 22 POSTED; QTY=150) MODULE C 1-211431-5 (SIZE 22 POSTED; QTY=80) 2-448138-7 (SIZE 20 POSTED; QTY=4) 2-448139-6 (SIZE 16 POSTED; QTY=1)	1883712-4
01	MODULE A 150 POSN MONOBLOCK W/ NONREMOVABLE CONTACTS MODULE B 150 POSN MONOBLOCK W/ NONREMOVABLE CONTACTS MODULE C 211431-4 (SIZE 22 POSTED; QTY=80) 2-448138-6 (SIZE 20 POSTED; QTY=4) 2-448139-5 (SIZE 16 POSTED; QTY=1)	1883712-3
47	MODULE A 150 POSN MONOBLOCK W/ NONREMOVABLE CONTACTS MODULE B 150 POSN MONOBLOCK W/ NONREMOVABLE CONTACTS MODULE C 211431-4 (SIZE 22 POSTED; QTY=80) 2-448138-6 (SIZE 20 POSTED; QTY=4) 2-448139-5 (SIZE 16 POSTED; QTY=1)	1883712-2
40	MODULE A 1-211431-5 (SIZE 22 POSTED; QTY=150) MODULE B 1-211431-5 (SIZE 22 POSTED; QTY=150) MODULE C 1-211431-5 (SIZE 22 POSTED; QTY=80) 2-448138-7 (SIZE 20 POSTED; QTY=4) 2-448139-6 (SIZE 16 POSTED; QTY=1)	1883712-1

THIS DRAWING IS A CONTROLLED DOCUMENT.

DIMENSIONS: INCHES	TOLERANCES UNLESS OTHERWISE SPECIFIED:	DMN: C.C.THOMAS 10-6-06	APVD: K.HOGAN 10-6-06	NAME: RCPT ASSY, SIZE 2, ARINC 600 (150/150/85)
0 PL ± -	1 PL ± -	2 PL ± -	3 PL ± -	4 PL ± -
ANGLES	± -	APPLIC. SPEC		
MATERIAL: SEE TABLE	FINISH: SEE TABLE	WEIGHT: -	SIZE: A1	CAGE CODE: 00779
CUSTOMER DRAWING		SCALE: 1:1	SHEET: 1 OF 2	REV: G

STE TE Connectivity Ltd.

REVISIONS				
P	LTR	DESCRIPTION	DATE	APP'D
-	SEE SHEET 1			



THIS DRAWING IS A CONTROLLED DOCUMENT.		DIN C.C.THOMAS 10-6-06	TE Connectivity Ltd.																		
DIMENSIONS: INCHES		CHK K.HOGAN 10-6-06																			
TOLERANCES UNLESS OTHERWISE SPECIFIED:		APP'D K.HOGAN 10-6-06	NAME RCPT ASSY, SIZE 2, ARINC 600 (150/150/85)																		
<table border="1"> <tr><td>0 PLC</td><td>±</td><td>-</td></tr> <tr><td>1 PLC</td><td>±</td><td>-</td></tr> <tr><td>2 PLC</td><td>±</td><td>-</td></tr> <tr><td>3 PLC</td><td>±</td><td>-</td></tr> <tr><td>4 PLC</td><td>±</td><td>-</td></tr> <tr><td>ANGLES</td><td>±</td><td>-</td></tr> </table>		0 PLC	±	-	1 PLC	±	-	2 PLC	±	-	3 PLC	±	-	4 PLC	±	-	ANGLES	±	-	PRODUCT SPEC	APPLICATION SPEC
0 PLC	±	-																			
1 PLC	±	-																			
2 PLC	±	-																			
3 PLC	±	-																			
4 PLC	±	-																			
ANGLES	±	-																			
MATERIAL SEE TABLE	FINISH SEE TABLE	WEIGHT -	SIZE A1																		
CUSTOMER DRAWING		SCALE 1:1	SHEET 2 OF 2																		
		DRAWING NO. 00779	REV G																		
		DWG NO. 1883712																			