

4

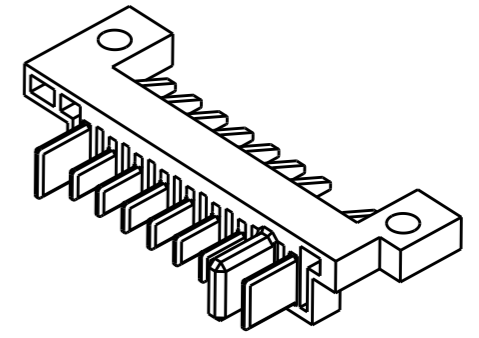
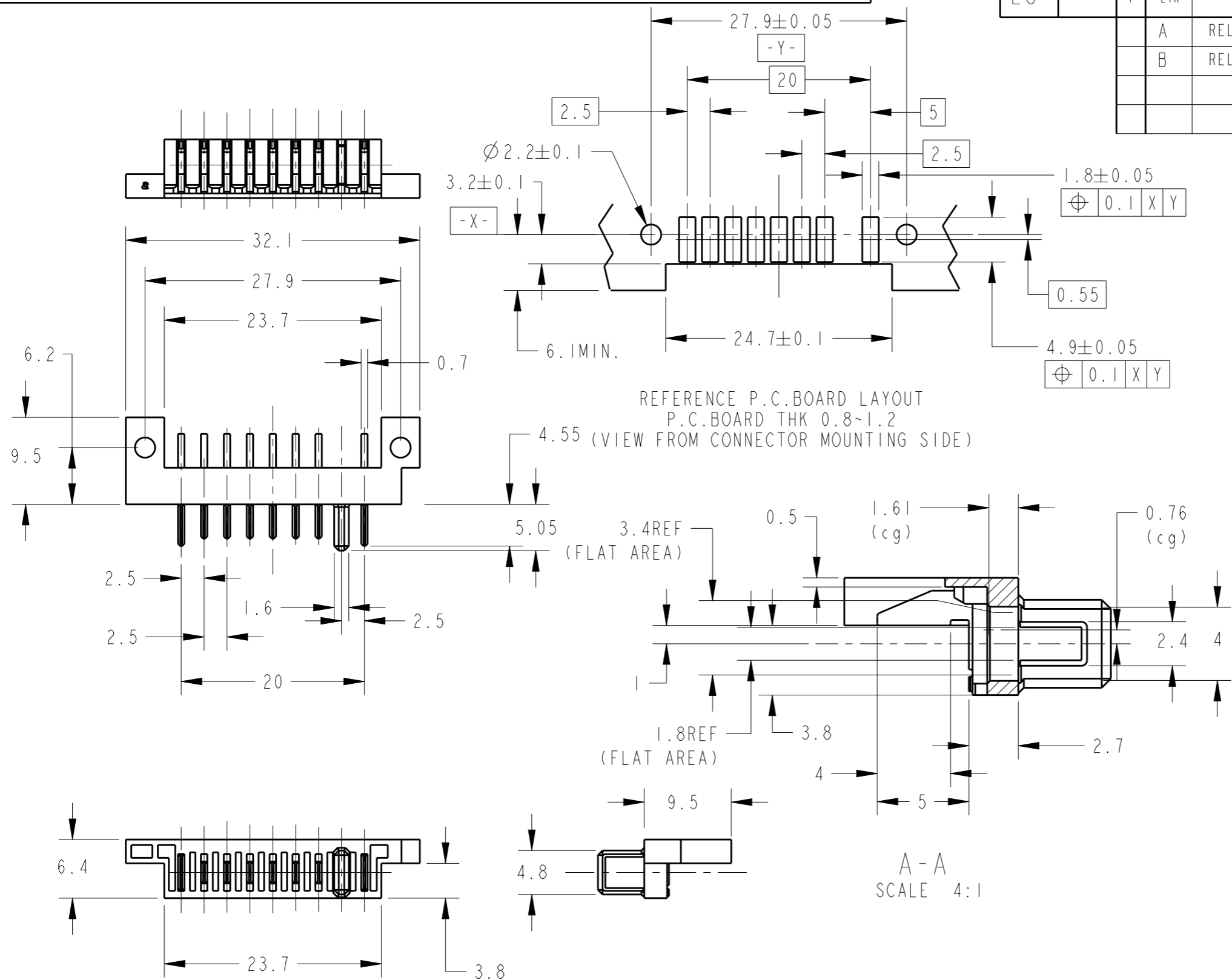
3

2

1

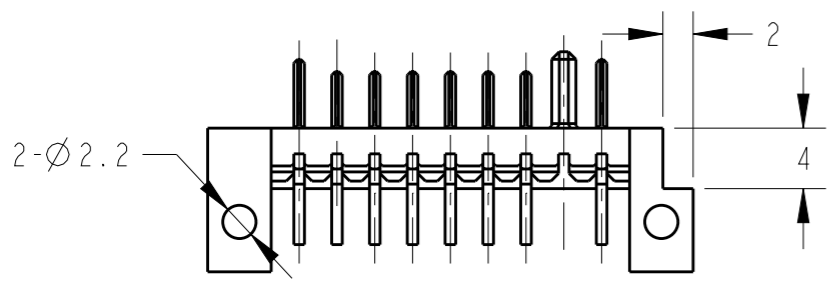
THIS DRAWING IS UNPUBLISHED. RELEASED FOR PUBLICATION 20
 © COPYRIGHT 20 BY TYCO ELECTRONICS CORPORATION. ALL RIGHTS RESERVED.

LOC	DIST	REVISIONS					
ES	-	P	LTR	DESCRIPTION	DATE	DWN	APVD
		A		RELEASED PER ECR-10-017956	29AUG2010	S.W	S.Y
		B		RELEASED PER ECR-13-014891	22SEP2010	E.L	WK.H



- 1 MATERIAL
HOUSING: THERMOPLASTIC RESIN
UL94V-0, BLACK
CONTACT: COPPER ALLOY
- 2 FINISH
CONTACT: Ni ALL OVER UNDER PL.
GOLD PL. AT CONTACT AREA
GOLD FLUSH PL. AT LEAD AREA

1932677-1/2: AS SHOWN



THIS DRAWING IS A CONTROLLED DOCUMENT FOR TYCO ELECTRONICS CORPORATION IT IS SUBJECT TO CHANGE AND THE CONTROLLING ENGINEERING ORGANIZATION SHOULD BE CONTACTED FOR THE LATEST REVISION.		DWN Sabrina Wang 29JUN2010	Tyco Electronics Shanghai, P.R.China, 200233				
DIMENSIONS: mm		CHK Wenke He 29JUN2010					
TOLERANCES UNLESS OTHERWISE SPECIFIED: ±0.3		APVD Steven Yao 29JUN2010	NAME PLUG ASSEMBLY OFFSET TYPE 2.5mm PITCH BATTERY CONNECTOR				
0 PLC ± 1 PLC ±0.3 2 PLC ±0.10 3 PLC ±0.001 4 PLC ±0.0001 ANGLES ±3°		PRODUCT SPEC -	RESTRICTED TO -				
MATERIAL 1		APPLICATION SPEC -	SIZE A3	CAGE CODE 00779	DRAWING NO G-1932677		
FINISH 2		WEIGHT -	SCALE 2:1		SHEET 1	OF 1	REV B
CUSTOMER DRAWING							