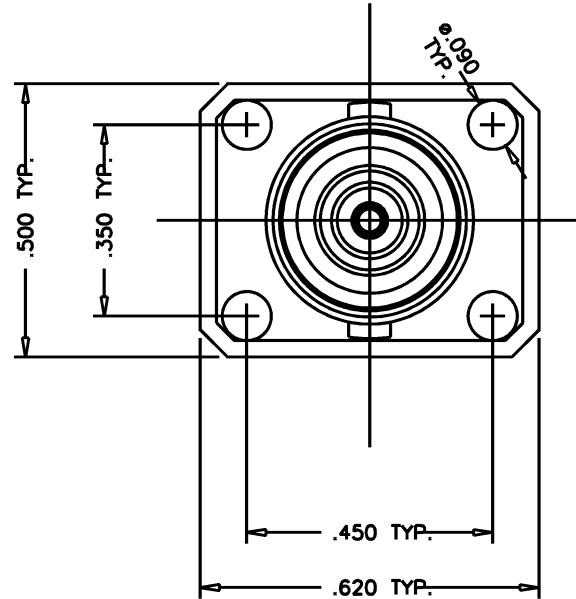
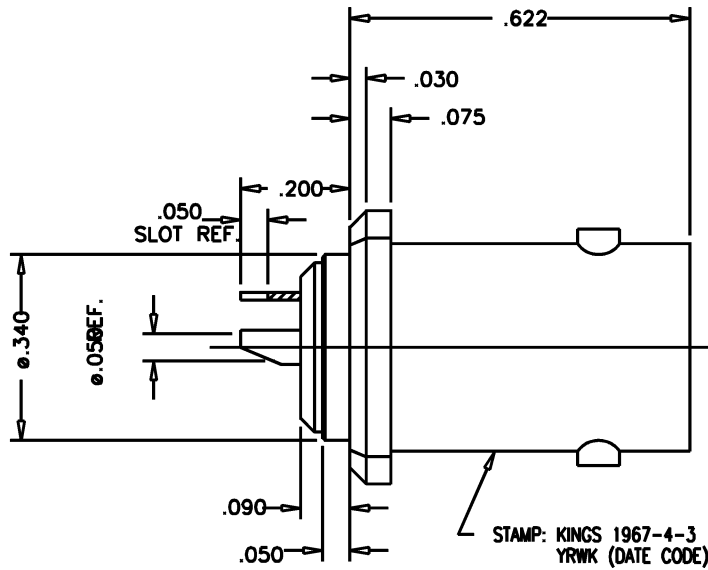


DASH NO.	M CODE	MADE FROM
----------	--------	-----------

GSD

1967-4-3

REVISIONS	
ISSUE	CHANGES
3	ER 39826 DCT 3/7/7
4	CN 39854 A DCT 3/22/7



- NOTES:
- MATERIALS:
INSULATORS: TEFLON, ASTM-D-4894
CENTER CONTACT: BER. COPPER, ASTM-B-196
BODY: STAINLESS STEEL, SAE-AMS-QQ-S-763
 - FINISHES:
CENTER CONTACT: HARD GOLD PLATE, PER ASTM-B488
INTER. CONTACT: GOLD PLATE, ASTM B488
 - ELECTRICAL CHARACTERISTICS:
WORKING VOLTAGE: 400 VRMS
FREQUENCY RANGE: DC TO 500 MHz.
 - INTERFACE PER MIL-STD-348, FIG. 201-2 (AS APPLICABLE).

SCALE	4:1	
APPROX SURFACE AREA		
USED ON		
REF:	EQR1120	
RECEPTACLE, PANEL TRB		
DRAWN	DCT	DATE 12/12/6
DESIGN	DCT	DATE 12/12/6
APPR.		DATE

KINGS
ELECTRONICS CO., INC.
ROCK HILL, SOUTH CAROLINA 29730

1967-4-3

GSD