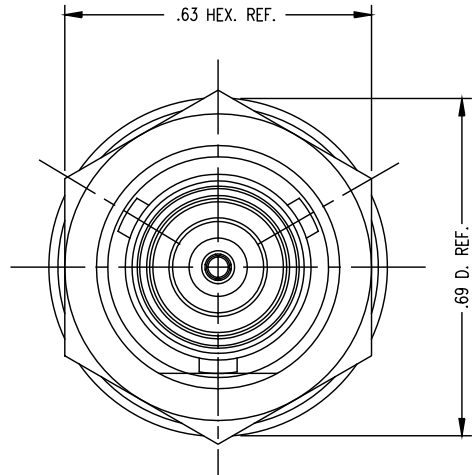
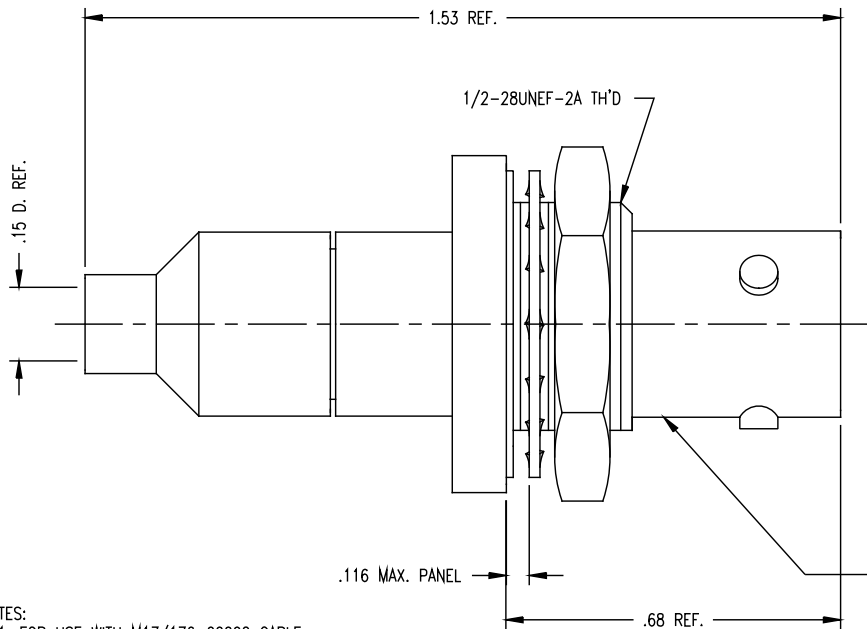
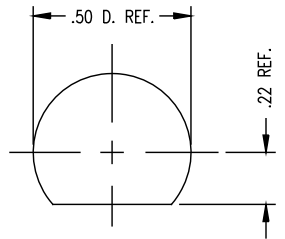


SD1992-12-102

REVISIONS	
ISSUE	CHANGES
3	CN 34088 C REDRAWN KH 09/08/92
E	REVISED PER ER24224 GGR 05/20/2010
F	ER31647 PSM 03/25/11
G	500 MHz WAS 5 MHz UPDATE TO DMF304 ER050693 KPL 11/18/13



MARK: KINGS 1992-12-102 (DATE CODE)



MOUNTING HOLE

- NOTES:
- FOR USE WITH M17/176-00002 CABLE.
 - FOR CABLING INSTRUCTION SEE 3-400.
 - FOR CRIMPING USE DIE KTH-2175.
 - INTERFACE PER MIL-STD-348, FIG. 201-2.
 - INTERMATEABLE WITH MIL-C-49142/8 & /12
 - CONNECTOR SHALL MEET THE REQUIREMNTS OF KER 10078
 - ACCEPTANCE TESTS PER MIL-C-49142
 - MATERIALS:
 - INSULATORS: PTFE, PER ASTM D1710
 - CENTER CONTACT } BERYLLIUM COPPER PER ASTM B196
 - INTERMEDIATE CONTACT }
 - GASKET: SILICONE RUBBER, A-A-59588
 - LOCKWASHER: PHOSPHOR BRONZE PER ASTM B103
 - ALL OTHER METAL PARTS: BRASS, ASTM B16, H02
 - FINISHES:
 - CENTER CONTACT: .000050 MIN GOLD PLATE PER ASTM B488 OVER
 - .000050 MIN NICKEL PER AMS-QQ-N-290 (RoHS)
 - INTERMEDIATE CONTACT: .000200 MIN SILVER PLATE PER ASTM B700 OVER
 - .000020 MIN COPPER PER ASTM B734 (RoHS)
 - ALL OTHER METAL PARTS: KINGS TARNISH RESISTANT FINISH (TR-5)
 - ELECTRICAL CHARACTERISTICS:
 - NOMINAL IMPEDANCE: NON-CONSTANT
 - WORKING VOLTAGE: 400 VRMS
 - FREQUENCY RANGE: DC TO 500 MHz.

CUSTOMER SALES DRAWING

THIS DRAWING, THE DESIGNS AND IDEAS EMBODIED IN THE DEVICE TO WHICH IT RELATES, AND THE METHOD OF PRODUCING THE DEVICE, ARE THE PROPERTY OF WINCHESTER ELECTRONICS CORPORATION AND SHALL NOT BE EMPLOYED, COPIED, OR DISCLOSED TO ANYONE, IN ANY MANNER WITHOUT THE CONSENT OF WINCHESTER ELECTRONICS CORPORATION.

SCALE	4:1
APPROX SURFACE AREA	
WAS:	E-14993
USED ON	
REF:	
JACK, BULKHEAD, 3 STUD, TRB	
DRAWN KH	DATE 09/08/92
DESIGN VLS	DATE 09/09/92
APPR.	DATE

Winchester Electronics Corporation
199 Park Road Ext Suite 104
Middlebury, Connecticut 06762

SD1992-12-102