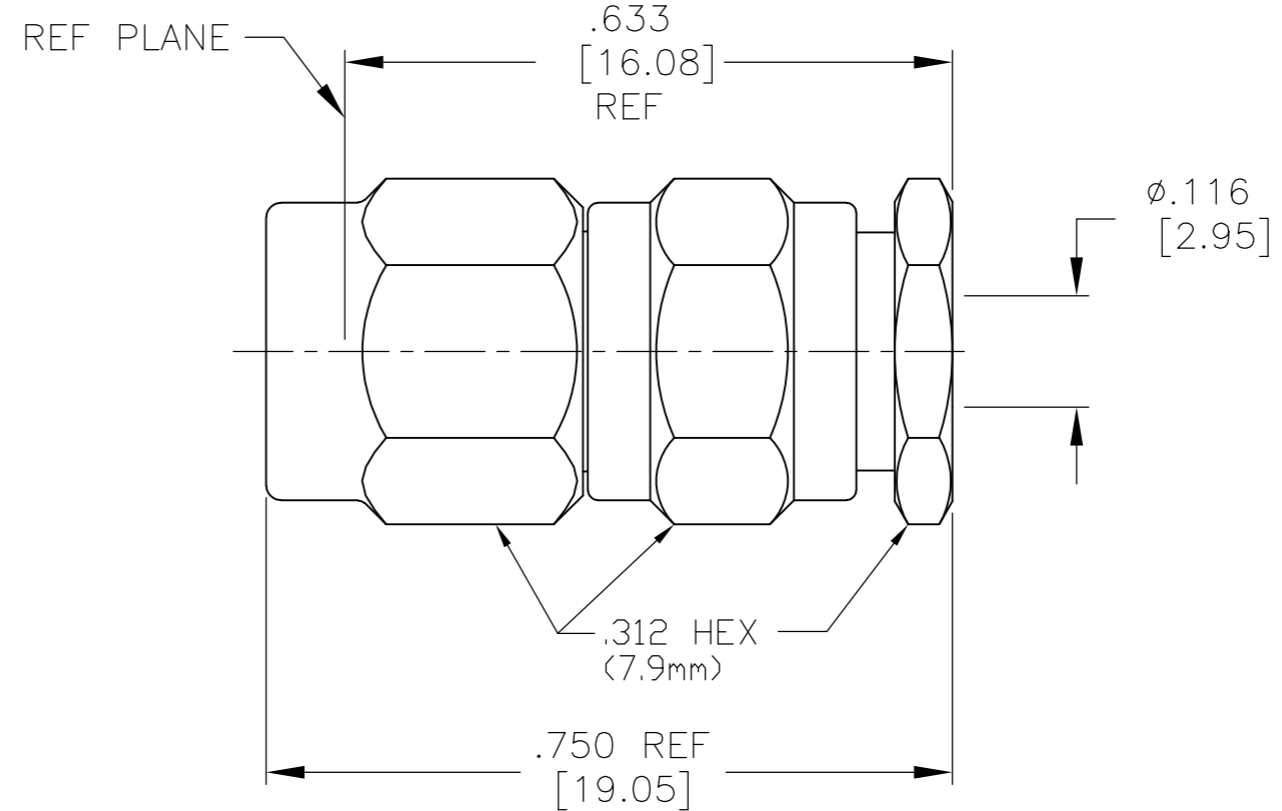
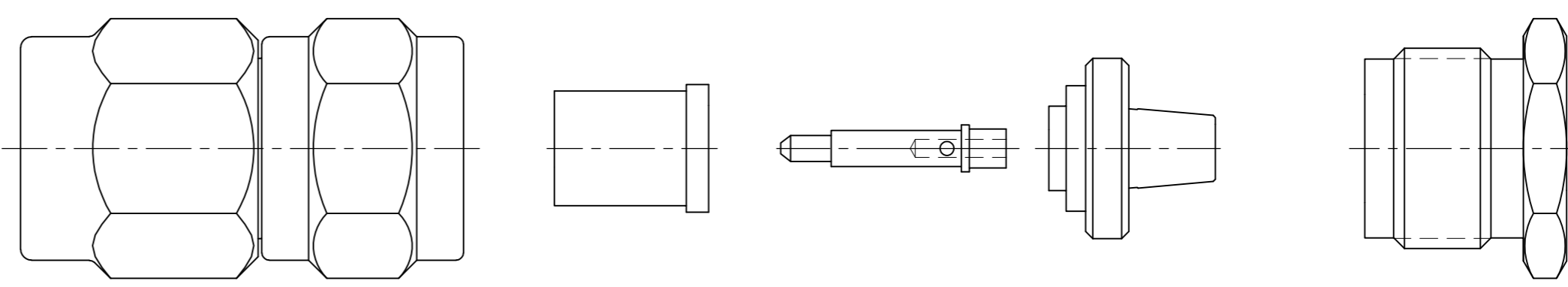


THIS DRAWING IS UNPUBLISHED. RELEASED FOR PUBLICATION		
© COPYRIGHT BY TYCO ELECTRONICS CORPORATION. ALL RIGHTS RESERVED.		
HOUSING COUPLING NUT CLAMP NUT	STAINLESS STEEL PER ASTM-A484 AND ASTM- A582, TYPE 303	GOLD PLATE PER ASTM-B-488 OVER NICKEL PLATE PER QQ-N-290
DIELECTRIC	TFE FLUOROCARBON PER ASTM-D-1457	N/A
CENTER CONTACT	BERYLLIUM COPPER PER ASTM B 196, ALLOY C17300, CONDITION H	GOLD PLATE PER ASTM-B-488 OVER COPPER PLATE PER MIL-C-14550
COLLAR	BRASS PER QQ-B-626 COMP. 360, HALF HARD	GOLD PLATE PER ASTM-B-488 OVER COPPER PLATE PER MIL-C-14550
RETAINING RING	BERYLLIUM COPPER PER ASTM B 194, ALLOY C17200, CONDITION H	N/A
GASKET	SILICONE RUBBER PER ZZ-R-765	N/A
COMPONENT	MATERIAL	FINISH

LOC DF	DIST X0	REVISIONS			
P	LTR	DESCRIPTION	DATE	DWN	APVD
A		REV PER ECO 08-006995	3-24-08	CT	DW



ASSEMBLED VIEW



AS RECEIVED BY CUSTOMER

ELECTRICAL	MECHANICAL	ENVIRONMENTAL
Nominal Impedance (Ohms) 50	Interface Dimensions MIL-STD-348A, Fig. 310.1	TEMPERATURE RATING -65°C TO +165°C
Frequency Range (GHz) DC to 18	Recommended Mating Torque 7-10 In-Lbs	Vibration MIL-STD-202, Method 204, Condition D
Volt Rating (VRMS MAX) @ Sea Level 250	Mating Characteristics:	Shock MIL-STD-202, Method 213, Condition I
VSWR 1.15 + .02f(GHz)	Insertion (MAX Lbs) N/A	Thermal Shock MIL-STD-202, Method 107, Condition B, EXCEPT HIGH TEMP 85°C
Insertion Loss (dB MAX) .06 √f GHz	Withdrawal (MIN Oz) N/A	Moisture Resistance MIL-STD-202, Method 106 Step 7b (Vibration)
RF Leakage (dB MIN) -[60-f(GHz)]	Force to Engage and Disengage (In-Lbs MAX) 2	Shall Be Omitted
Corona, 70,000 Ft (VRMS MIN) 190	Center Contact Captivation	Corrosion - MIL-STD-202, Method 101, Condition B, 5% salt spray
Dielectric Withstanding Voltage (VRMS MIN) @ Sea Level 750	Axial (Lbs) 6 Min	
Contact Resistance (Milliohms MAX)	Radial (In-Oz) N/A	
Center Contact 3.0	Cable Retention	
Outer Contact 2.0	Axial Force (Lbs) 20 MIN	
Cable to Housing 0.5	Torque (In-Oz) N/A	
RF High Potential @ Sea Level (VRMS MIN @ 5 MHz) 500	Weight (Grams) TBD	
I.R.(Megohms MIN) 5,000		

1996360-1  
PART NUMBER

THIS DRAWING IS A CONTROLLED DOCUMENT.		DWN C.C.THOMAS 3-24-08	Tyco Electronics Corporation Harrisburg, Pa 17105-3608	
DESIGNED FOR USE WITH RG188/U FLEXIBLE CABLE		CHK D.WILSON 3-24-08	NAME SMA STRAIGHT CABLE PLUG, CLAMP ATTACHMENT	
CABLE ENTRY DIAMETER MINIMUM		APVD D.WILSON 3-24-08	PRODUCT SPEC 408-04906	
CONTACT .0234 [0.594]		APPLICATION SPEC		
DIELECTRIC .066 [1.68]		SIZE A2	CAGE CODE 00779	DRAWING NO 1996360
COLLAR .0656 [1.666]		RESTRICTED TO		
CLAMP NUT .1124 [2.855]		SCALE 5:1 SHEET 1 OF 1 REV A		
MATERIAL SEE TABLE		CUSTOMER DRAWING		
DIMENSIONS: INCHES [mm]		FINISH SEE TABLE		
TOLERANCES UNLESS OTHERWISE SPECIFIED:		WEIGHT -		
0 PLC ± -				
1 PLC ± -				
2 PLC ± -				
3 PLC ± .005 [0.13]				
4 PLC ± -				
ANGLES ± -				

1996360