

20-000-1047-00

MATERIALS:

- SST. CORROSION-RESISTANT, NON MAGNETIC 303, PER ASTM A484 AND A582
- BERYLLIUM COPPER PER ASTM-B-196, QQ-C-530
- PTFE FLUOROCARBON PER ASTM-D-1710 TYPE 1
- BRASS HALF HARD PER QQ-B-626

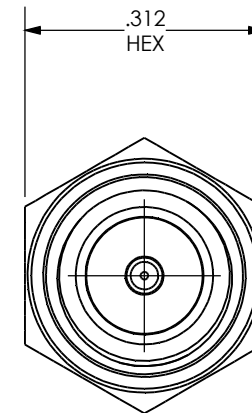
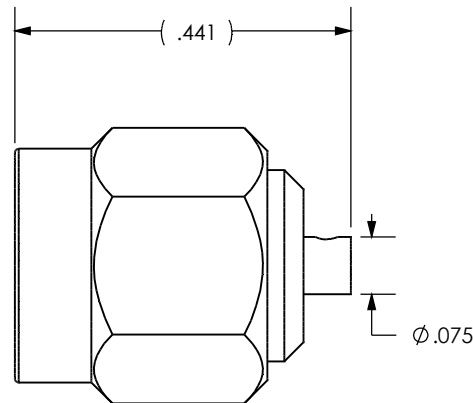
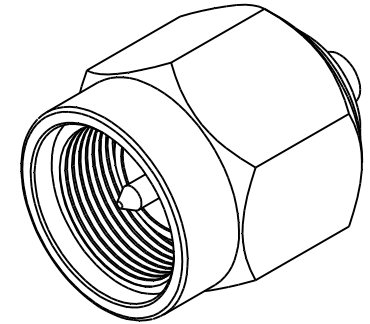
FINISH:


- CENTER CONDUCTORS, BODY AND SOLDER COMPONENTS SHALL BE PLATED PER MIL-G-45204 TYPE II, CLASS 1 OVER NICKEL PLATE PER QQ-N-290.
- COMPONENTS SHALL BE PASSIVATED PER ASTM A380

FREQUENCY: DC-27GHz

VSWR: 1.2 TO 27GHz

INSERTION LOSS: .05 SQT(F(GHZ)) DB



LTR	DESCRIPTION	DATE	APPR.	DRAWN LMW	CHECKED	USED ON 20-000-1047-00	 SRI CONNECTOR GAGE COMPANY 3950 DOW ROAD MELBOURNE FLORIDA 32934
-	REL	09/02		APPR.	SCALE	MATERIAL SEE NOTES	
				UNLESS OTHERWISE SPECIFIED: 1. REMOVE ALL BURRS 2. BREAK ALL CORNERS & EDGES .005 R. MAX 3. CHAMFER 1st & LAST THREADS 45" 4. SURFACE FINISHED 32 UNLESS OTHERWISE SPECIFIED. 5. DIAMETERS ON COMMON CENTERS TO BE CONCENTRIC WITHIN .002 T.I.R. 6. ALL DIMENSIONS ARE AFTER PLATING.		FINISH SEE NOTES	TITLE: STORM .047 S/R CABLE
				DIMENSIONS ARE IN INCHES TOLERANCES		SIZE A	DWG. NO. 20-000-1047-00
				DECIMALS .X ± .030 .XX ± .010 .XXX ± .005	FRACTIONAL ± 1/64	ANGULAR .X° ± 1° .X°X ± 15'	SHEET 1