

This document, including the design, configuration and mechanical features revealed herein are the sole, confidential and proprietary property of Winchester Interconnect. Reproduction or use thereof, in whole or part, is prohibited without the prior written consent of Winchester Interconnect.

REV	DESCRIPTION	DATE	APRD
A	ECO-10296	06/03/2019	ASNZ

**NOTES:**

**MATERIAL:**

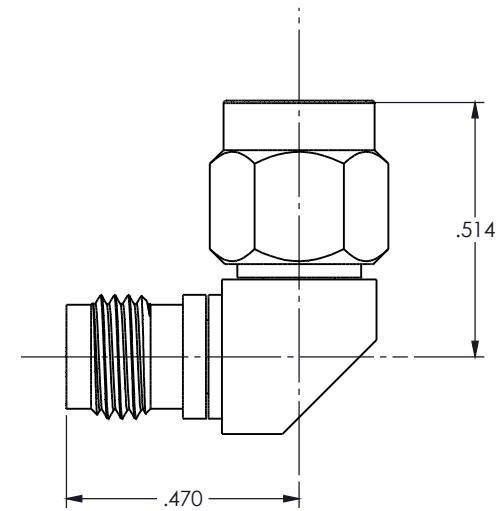
STAINLESS STEEL 303 PER ASTM A484 AND A582.  
 BERYLLIUM COPPER PER ASTM-B-196, QQ-C-530  
 PTFE FLUOROCARBON PER ASTM-D-1710


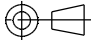
**FINISH:**

CENTER CONDUCTORS AND SOLDER COMPONENTS SHALL BE PLATED PER MIL-G-45204.  
 TYPE II, CLASS 1 OVER NICKEL PLATE PER QQ-N-290.  
 BODY AND BODY COMPONENTS SHALL BE PASSIVATED PER ASTM A380.

**ELECTRICAL CHARACTERISTICS:**

VSWR: 1.35:1 MAX TO 27 GHz.  
 INSERTION LOSS:  $.05\sqrt{F}$ (GHz) dB.



DO NOT SCALE DRAWING	DRAWN ASNZ	DATE 6/19	 <b>Winchester Interconnect</b> 245 Lynnfield St. Peabody, MA 01960
UNLESS OTHERWISE SPECIFIED: DIMENSIONS ARE IN INCHES.  TOLERANCES: FRACTIONS: $\pm 1/64$ X: $\pm 0.030$ .XX: $\pm 0.010$ .XXX: $\pm 0.005$ ANGLES: X°: $\pm 1^\circ$ X'X": $\pm 15'$ MACHINED SURFACES: 32/	ENG APPR.	DATE	
	MFG APPR.	DATE	
	OTHER APPR. tcoverstone	DATE	
THIRD ANGLE PROJECTION 			TITLE: SMA PLUG TO SMA JACK R/A
SIZE <b>B</b>		DWG. NO. 20-921-2100-00	REV <b>A</b>
PER ASME Y14.5M-1994		SCALE: 4:1	SHEET 1 OF 1