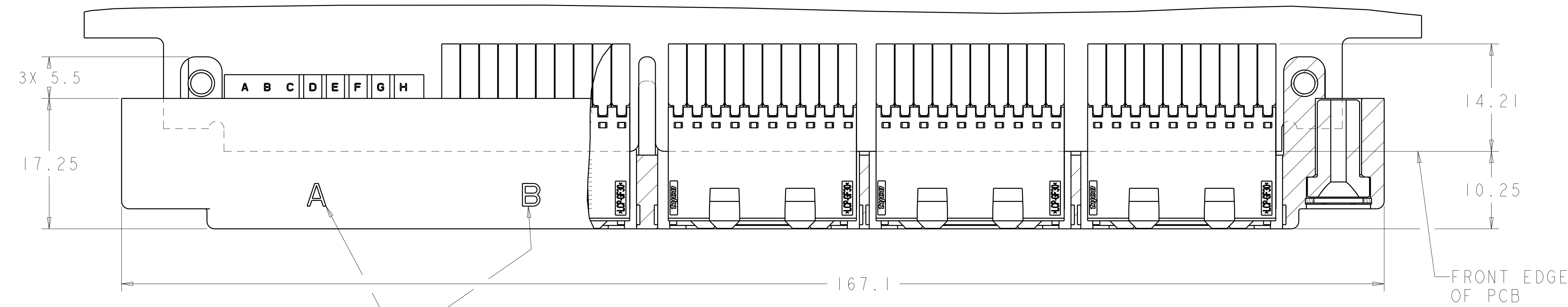
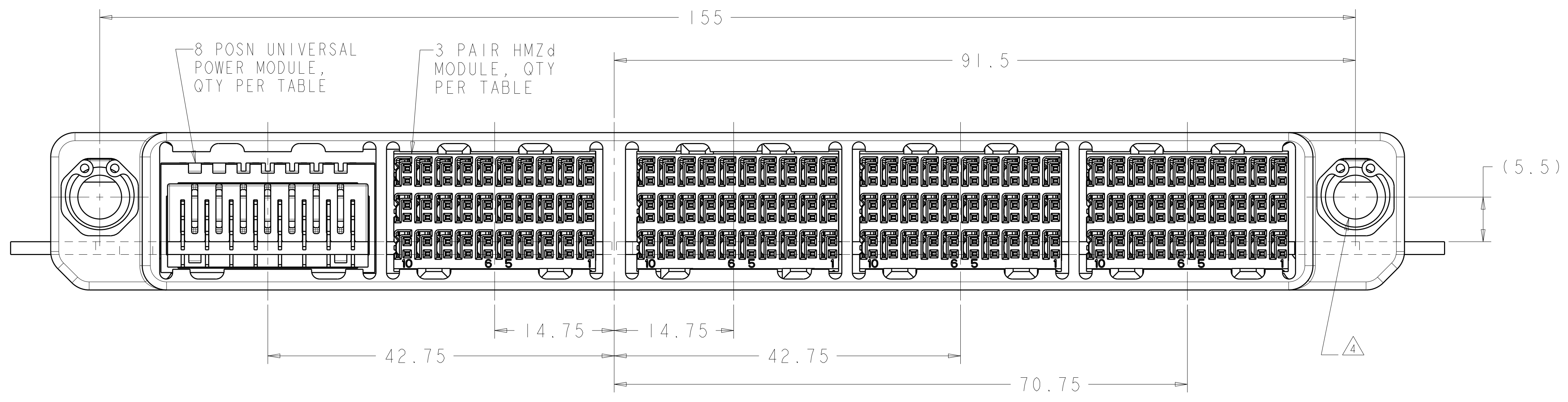


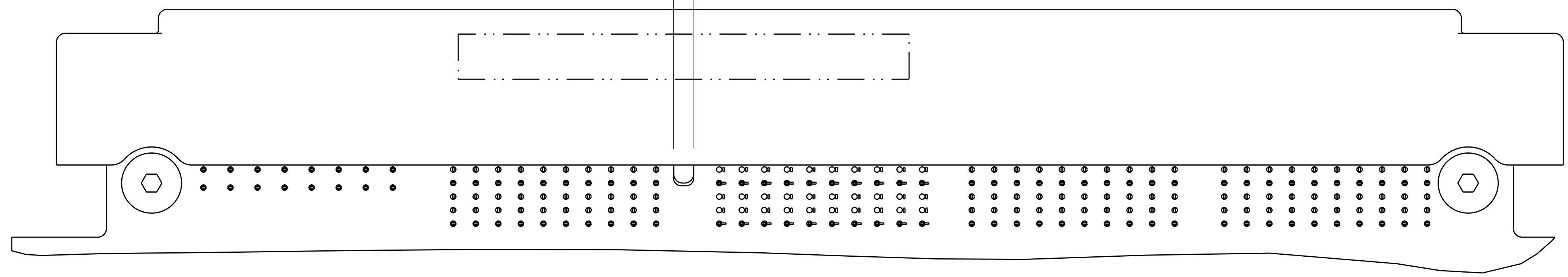
LOC	DIST	REV	DATE	BY	APPD
-	-	C	3-2-11	CT	DH



SHELL POCKET IDENTIFIER



(2.25) SHELL ALIGNMENT FEATURE

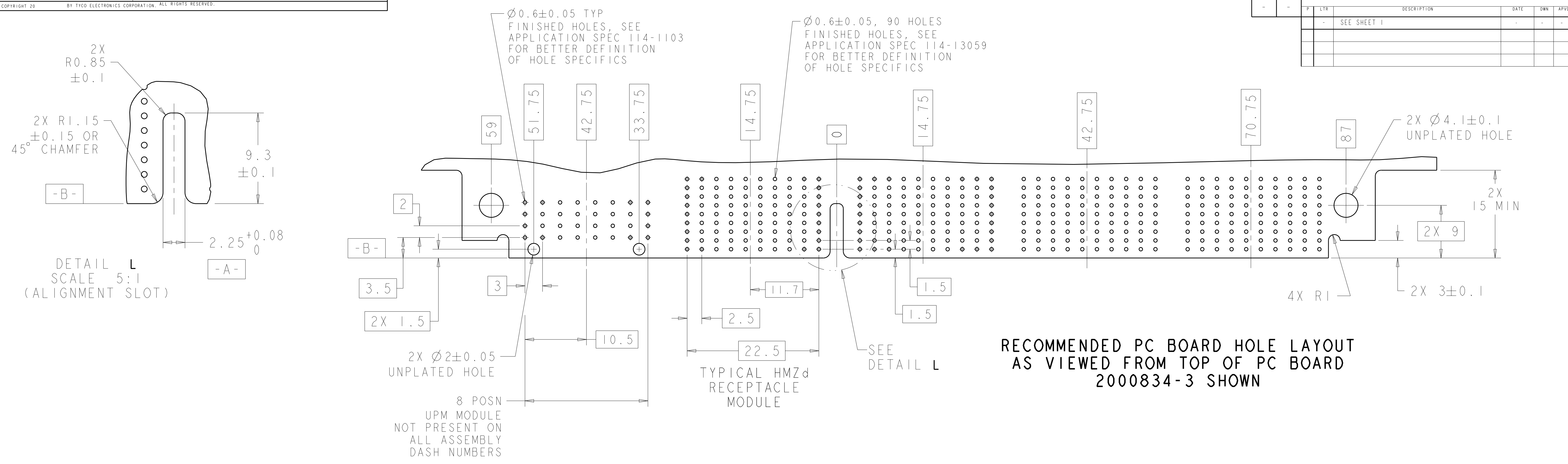


NOT RELEASED	---	1	---	3	---	2000834-4
		1		4		2000834-3
NOT RELEASED	---	2	---	2	---	2000834-2
		-		5		2000834-1
	8 POSN RF COAX	8 POSN UPM	3 PAIR HMZd			PART NUMBER
	MODULE QTY PER ASSY					

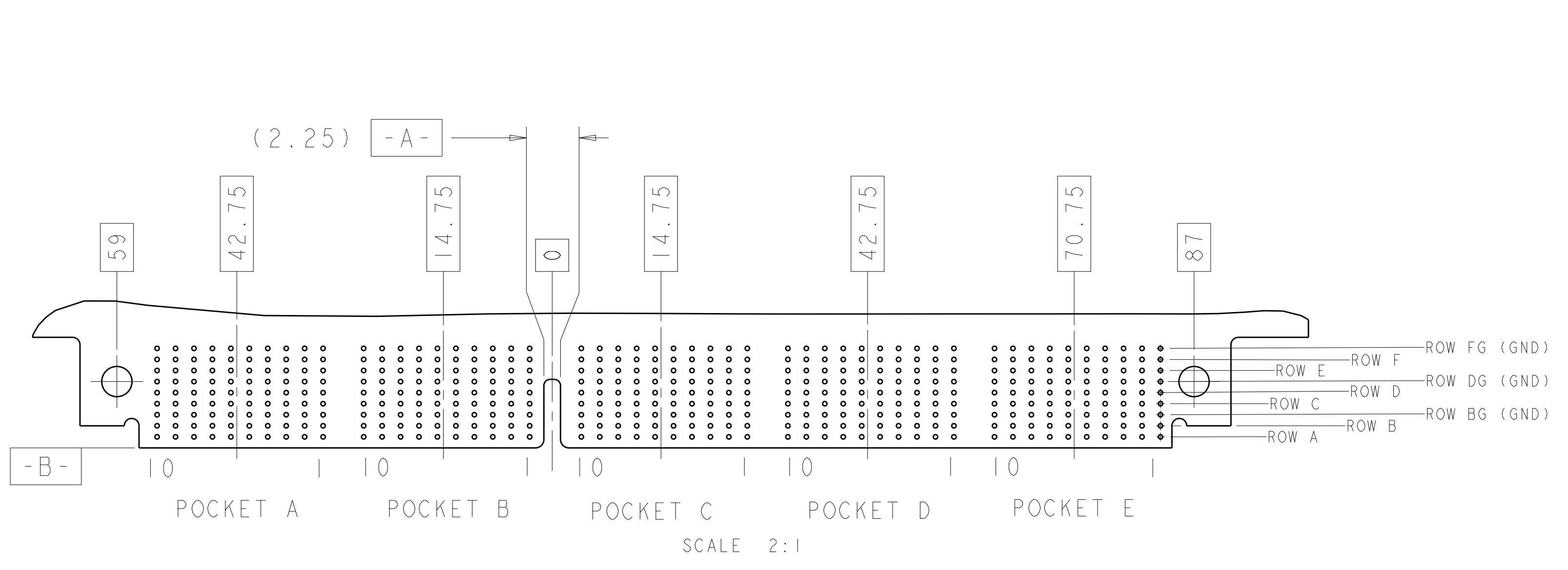
- MATING CONNECTOR FOR THIS CONNECTOR IS 2000835.
- MATERIAL- SHELL: ALUMINUM  
 HOUSING: GLASS FILLED POLYESTER, UL94V0  
 RETAINING RING: STAINLESS STEEL  
 KEYING GUIDE SOCKET: STAINLESS STEEL
- PLATING- CONTACT MATING AREA: 1.27µm MIN GOLD OVER 1.27µm MIN NICKEL  
 CONTACT PCB AREA: 0.5µm MIN BRIGHT TIN-LEAD OVER 1.27µm MIN NICKEL  
 SHELL: ELECTROLESS NICKEL
- KEYING GUIDE SOCKET AND RETAINING RING PACKAGED FOR ASSEMBLY BY CUSTOMER.

DIMENSIONS: mm TOLERANCES UNLESS OTHERWISE SPECIFIED: 0 PLC ±.1 1 PLC ±.1 2 PLC ±.1 3 PLC ±.1 4 PLC ±.1 ANGLES ±.1		DWN: Brent D. Yohn 13JAN2010 CHK: CHONG YI 13JAN2010 APVD: M. R. McALONIS 13JAN2010 NAME: DAUGHTER CARD CONNECTOR, HIGH SPEED RUGGEDIZED (HSR), 5 BAY, UNSEALED, RIGHT ANGLE PRODUCT SPEC: 108-2381 APPLICATION SPEC:		Tyco Electronics Harrisburg, PA 17105-3608	
MATERIAL: 2	FINISH: 3	WEIGHT: -	SIZE: A11	CAGE CODE: 00779	DRAWING NO: C=2000834
CUSTOMER DRAWING			SCALE: 3:1	SHEET: 1 OF 2	REV: C

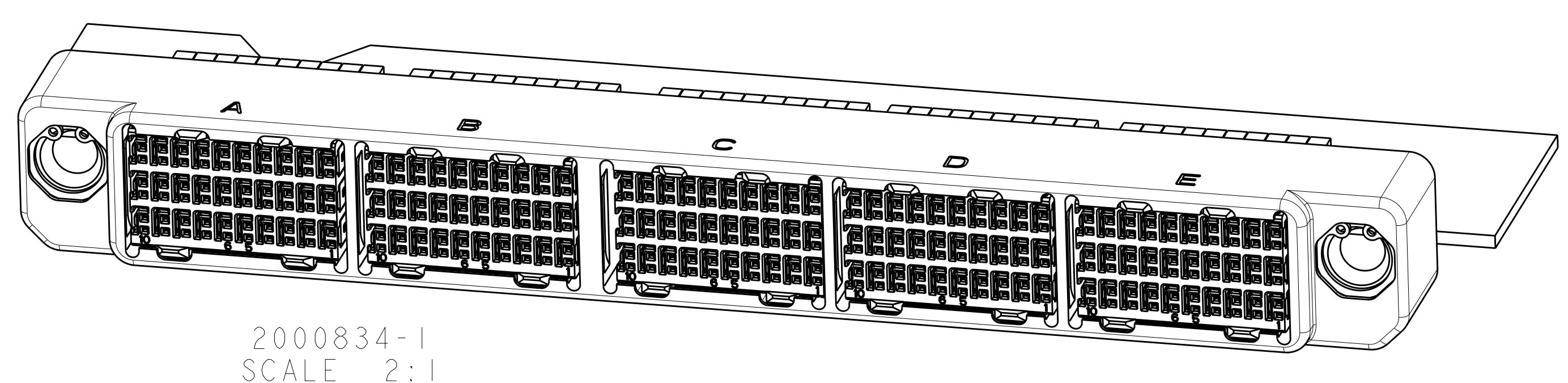
REVISONS		DATE	DWN	APVD
1	SEE SHEET 1			



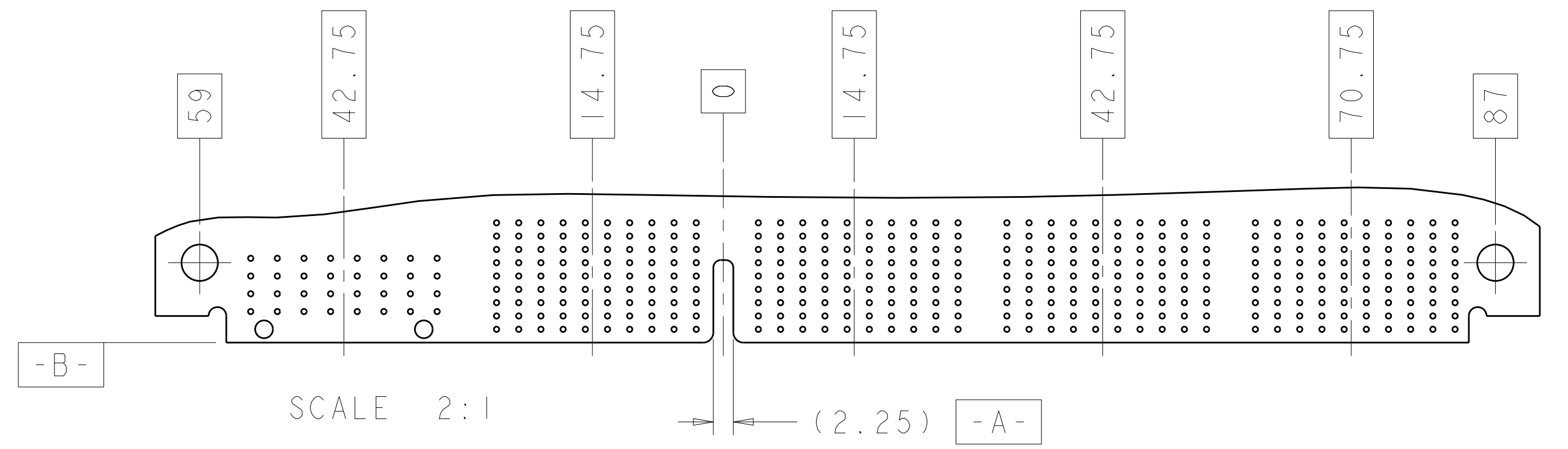
RECOMMENDED PC BOARD HOLE LAYOUT AS VIEWED FROM TOP OF PC BOARD 2000834-3 SHOWN



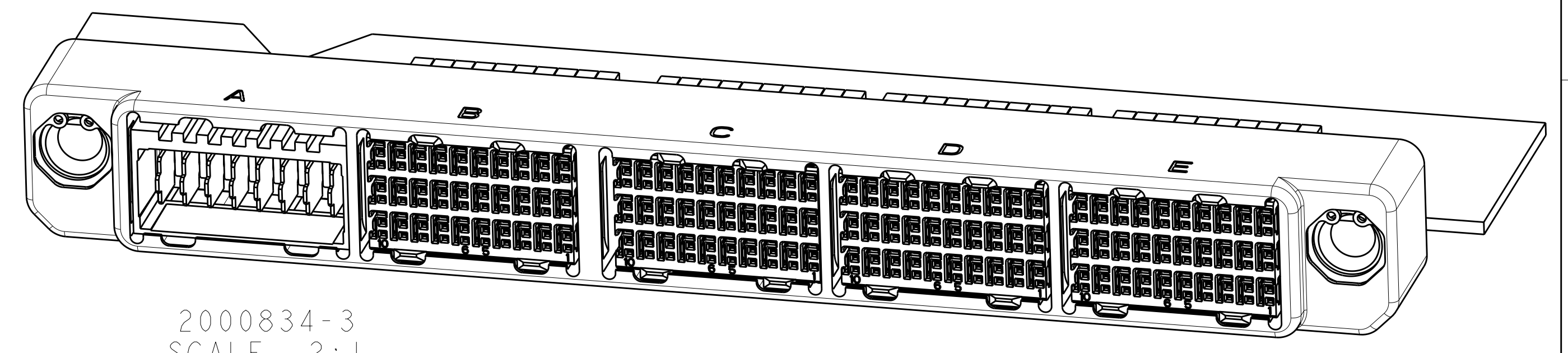
RECOMMENDED PC BOARD HOLE LAYOUT AS VIEWED FROM TOP OF PC BOARD 2000834-1 SHOWN (5 HMZd MODULES)



2000834-1 SCALE 2:1



RECOMMENDED PC BOARD HOLE LAYOUT AS VIEWED FROM TOP OF PC BOARD 2000834-3 SHOWN (4 HMZd MODULES AND 1 UPM MODULE)



2000834-3 SCALE 2:1

<small>THIS DRAWING IS UNPUBLISHED. RELEASED FOR PUBLICATION. COPYRIGHT 20 BY TYCO ELECTRONICS CORPORATION, ALL RIGHTS RESERVED.</small>		DWN: Brent D. Yohn CHK: CHONG YI APVD: M. R. McALONIS	Tyco Electronics Harrisburg, PA 17105-3608
DIMENSIONS: mm TOLERANCES UNLESS OTHERWISE SPECIFIED: 9 PLC ±. 1 PLC ±. 5 PLC ±. 4 PLC ±. ANGLES ±. FINISH	DATE: 13JAN2010 NAME: CHONG YI PRODUCT SPEC: 108-2381 APPLICATION SPEC:	NAME: DAUGHTER CARD CONNECTOR, HIGH SPEED RUGGIDIZED (HSR), 5 BAY, UNSEALED, RIGHT ANGLE SIZE: CAGE CODE DRAWING NO: A1100779C=2000834 WEIGHT:	RESTRICTED TO:
MATERIAL:		CUSTOMER DRAWING	SCALE: 3:1 SHEET 2 OF 2 REV C