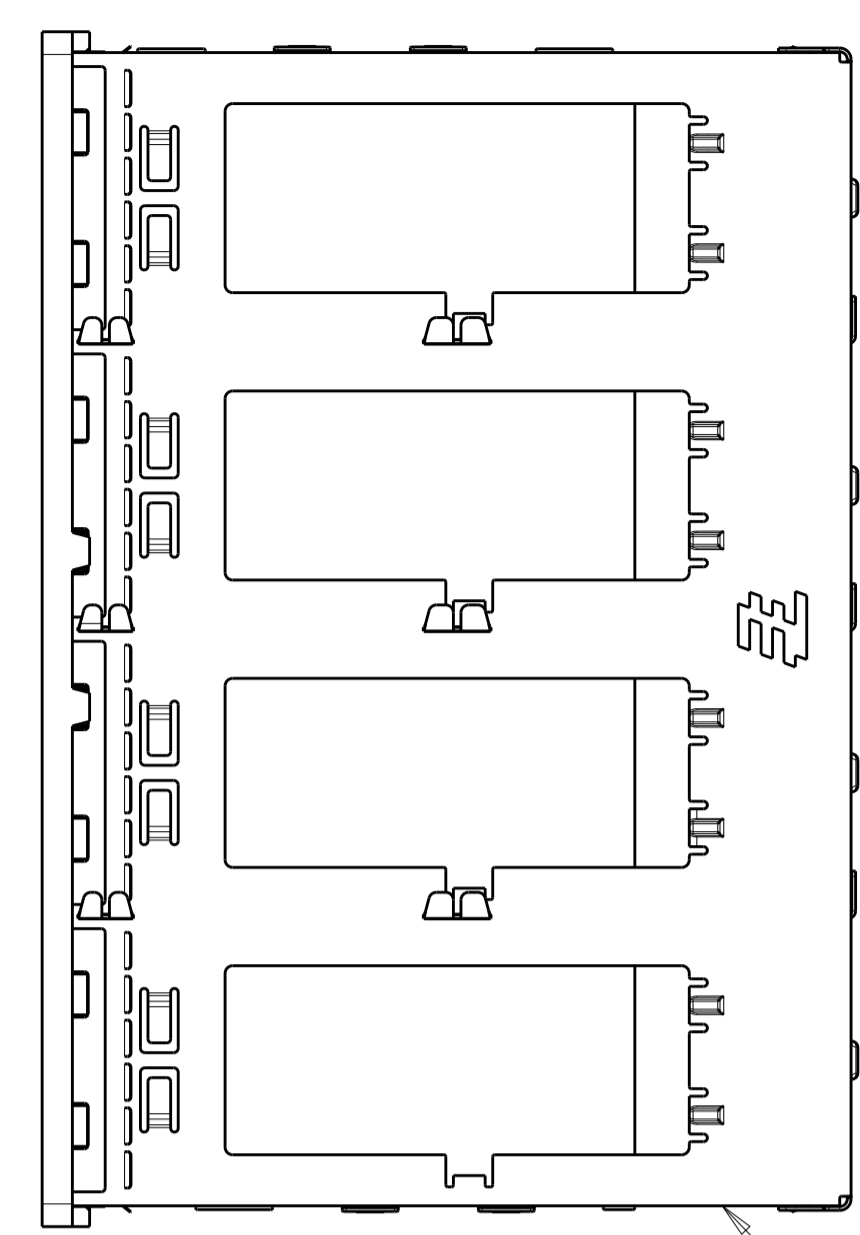
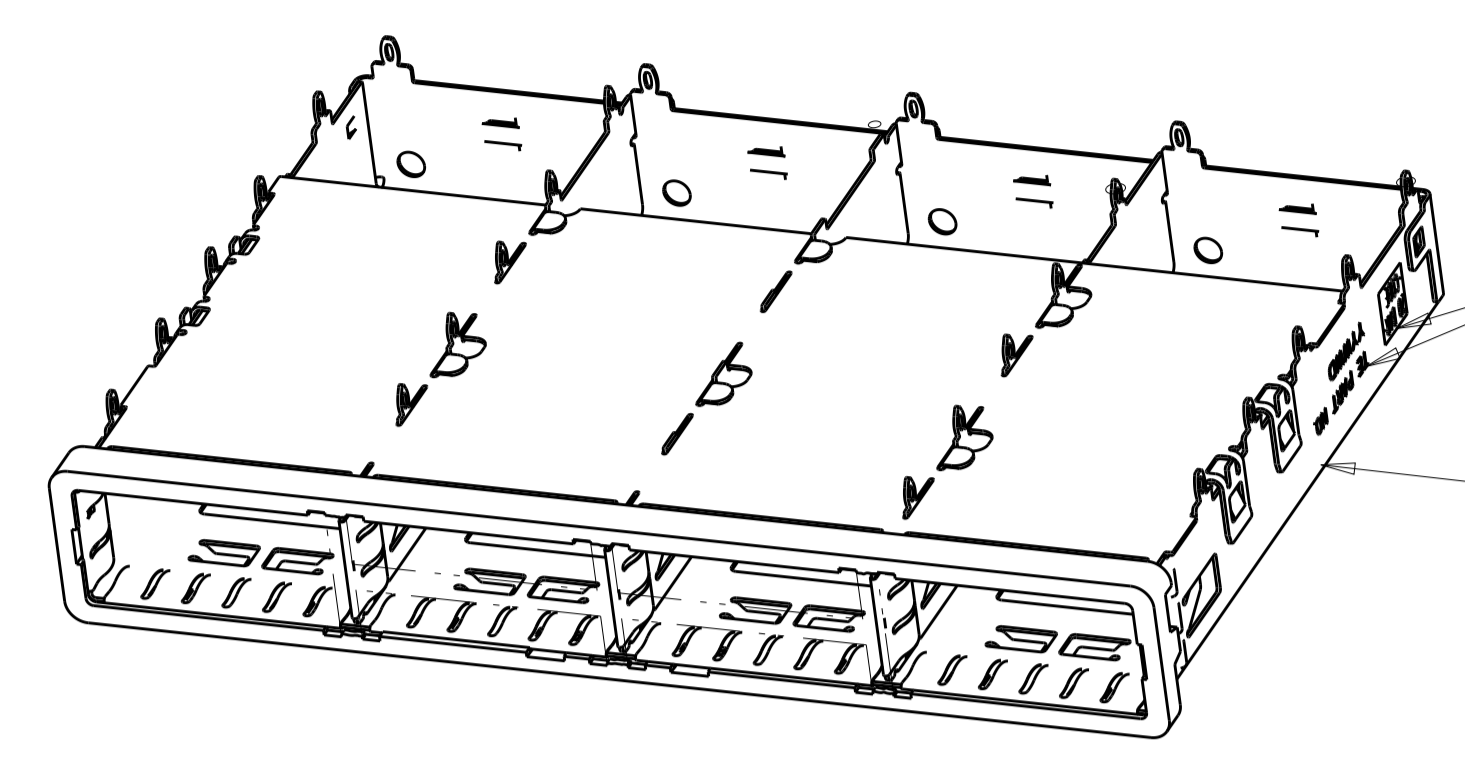


LOC	DIST	REVISIONS			
P	LTN	DESCRIPTION	DATE	DWN	APVD
E		REVISED PER ECR-12-009968	31MAY2012	DZ	AC
F		REVISED PER ECO-13-020244	31DEC2013	ZJ	JY
G		REVISED PER ECO-15-000148	10APR2015	RG	MC

- 1 SURFACE TRACES PERMITTED WITHIN THIS AREA EXCEPT WHERE CAGE STANDOFFS, SHOWN IN DETAIL S, CONTACT PC BOARD.
- 2 PITCH BETWEEN PORTS OF ONE 1X4 CAGE.
- 3 SPACING BETWEEN CAGES ON THE SAME PC BOARD. TO BE SPECIFIED BY CUSTOMER, MUST COMPLY WITH MINIMUM DIMENSIONS SHOWN.
- 4 REFERENCE APPLICATION SPEC 114-13218 FOR RECOMMENDED DRILL HOLE DIAMETER AND PLATING THICKNESS.
- 5 UNPLATED THRU HOLE.
- 6 DATUM AND BASIC DIMENSION ESTABLISHED BY CUSTOMER.
- 7 DATUM -A- IS TOP SURFACE OF THE HOST BOARD.
- 8 DIMENSION C IS THE NOMINAL THICKNESS OF CUSTOMER SUPPLIED PC BOARD. MINIMUM PC BOARD THICKNESS:  
 SINGLE SIDED: 1.45mm  
 DOUBLE SIDED: 2.2mm PER QSFP
- 9. MATES WITH QSFP MSA COMPATIBLE TRANSCEIVER.
- 10 BASELINE FOR THE DIMENSION IS CENTER OF COMPLIANT PIN HOLE.
- 11 2D BARCODE AND DATE CODE (YYWW) MARKED APPROXIMATELY AS SHOWN.
- 12 REFERENCE APP SPEC 114-13218 FOR GASKET THICKNESS CALCULATION.
- 13 MATERIAL:  
 CAGE ASSEMBLY: NICKEL SILVER, 0.25 THICK  
 EMI SPRINGS: COPPER ALLOY  
 FRONT FLANGE: ZINC ALLOY.
- 14 FINISH:  
 EMI SPRINGS: 2um MINIMUM TIN  
 FRONT FLANGE: 3um MINIMUM TIN OVER 1.27um MINIMUM NICKEL OVER 5.08um MINIMUM COPPER
- 15 HOLES ARE OPTIONAL WHEN PINS ON CENTRAL DIVIDER ARE REMOVED.



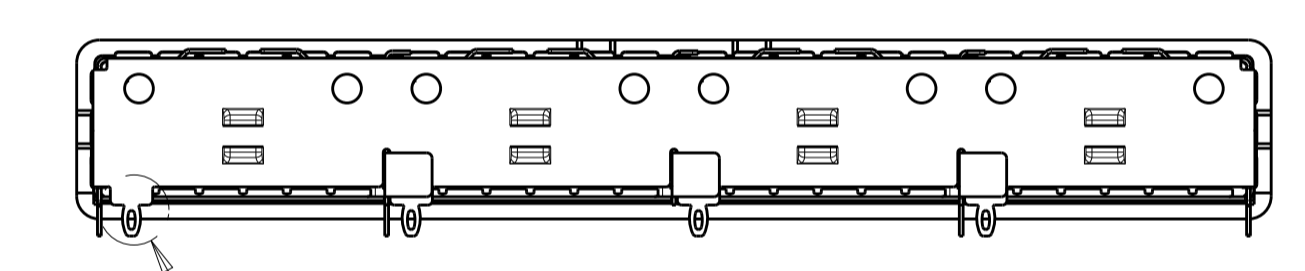
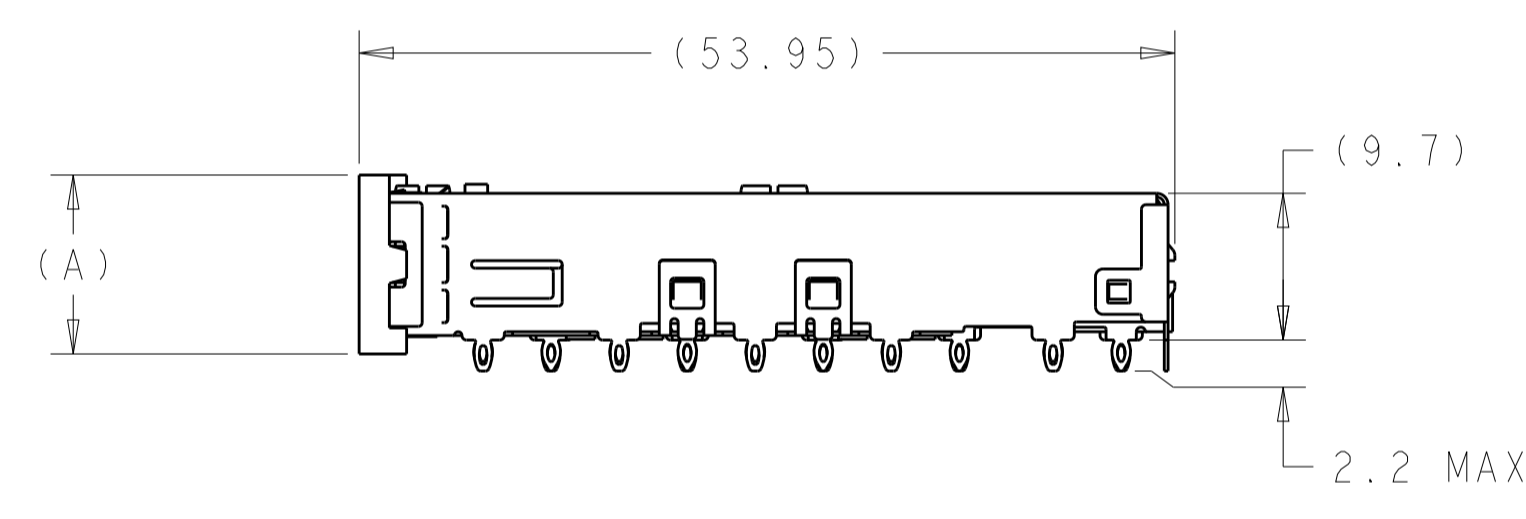
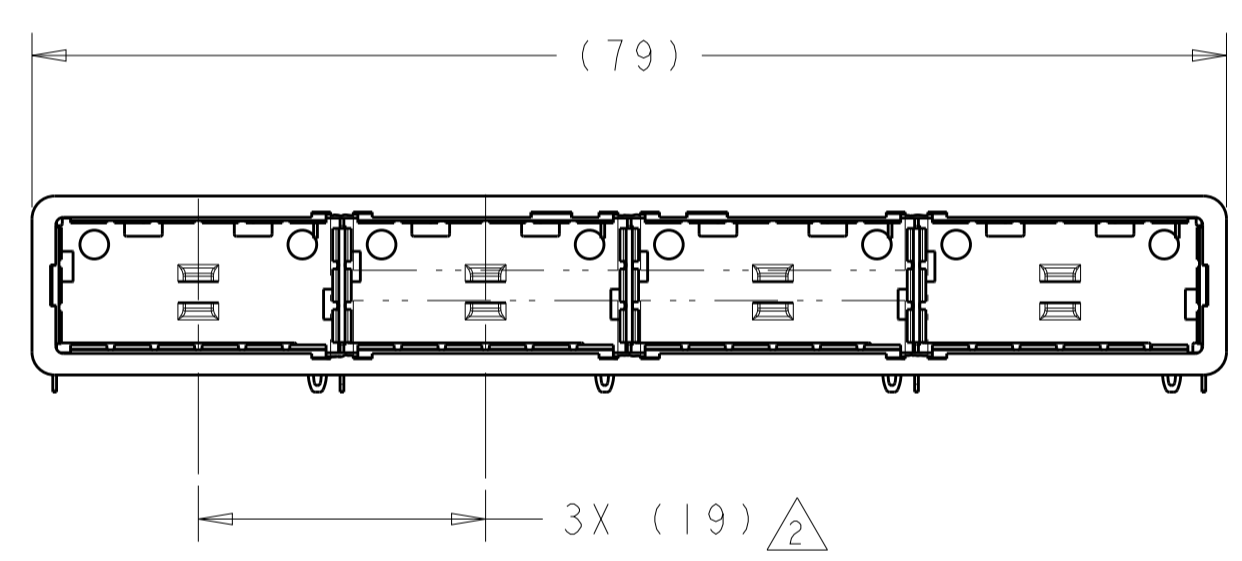
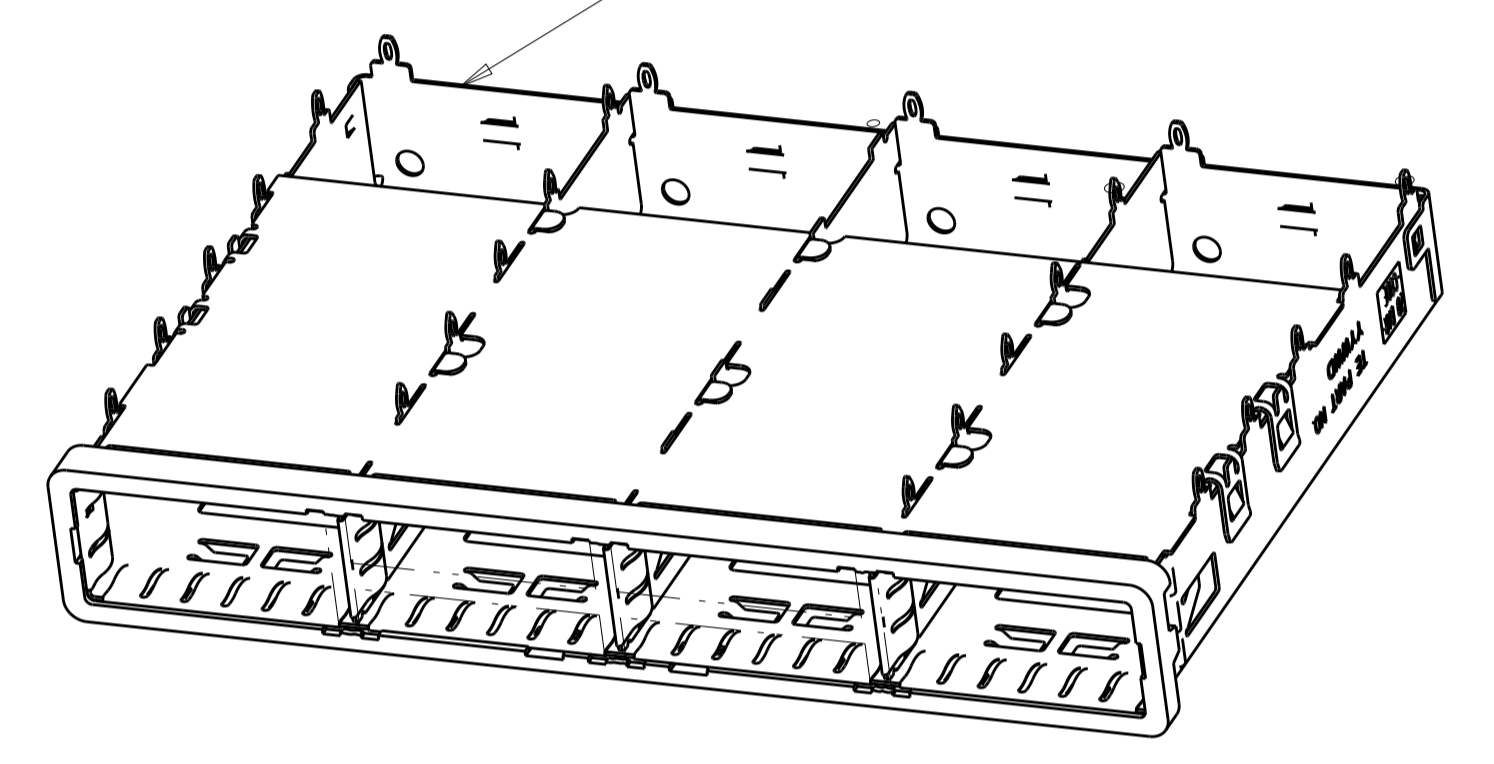
EMI SPRINGS CAGE ASSEMBLY



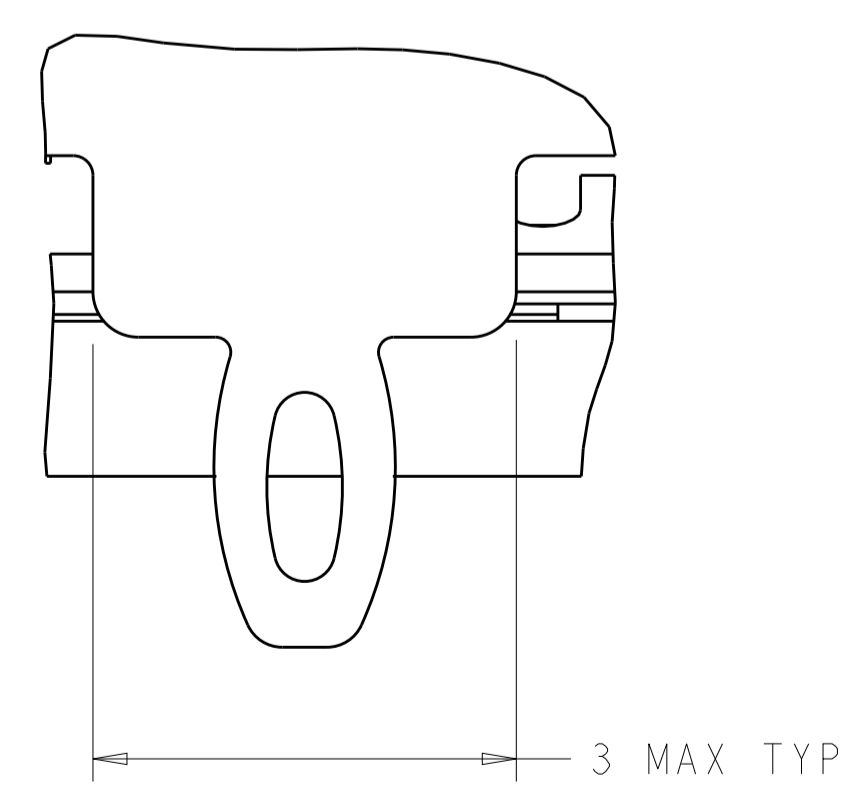
2D BARCODE AND DATE CODE

2007667-1

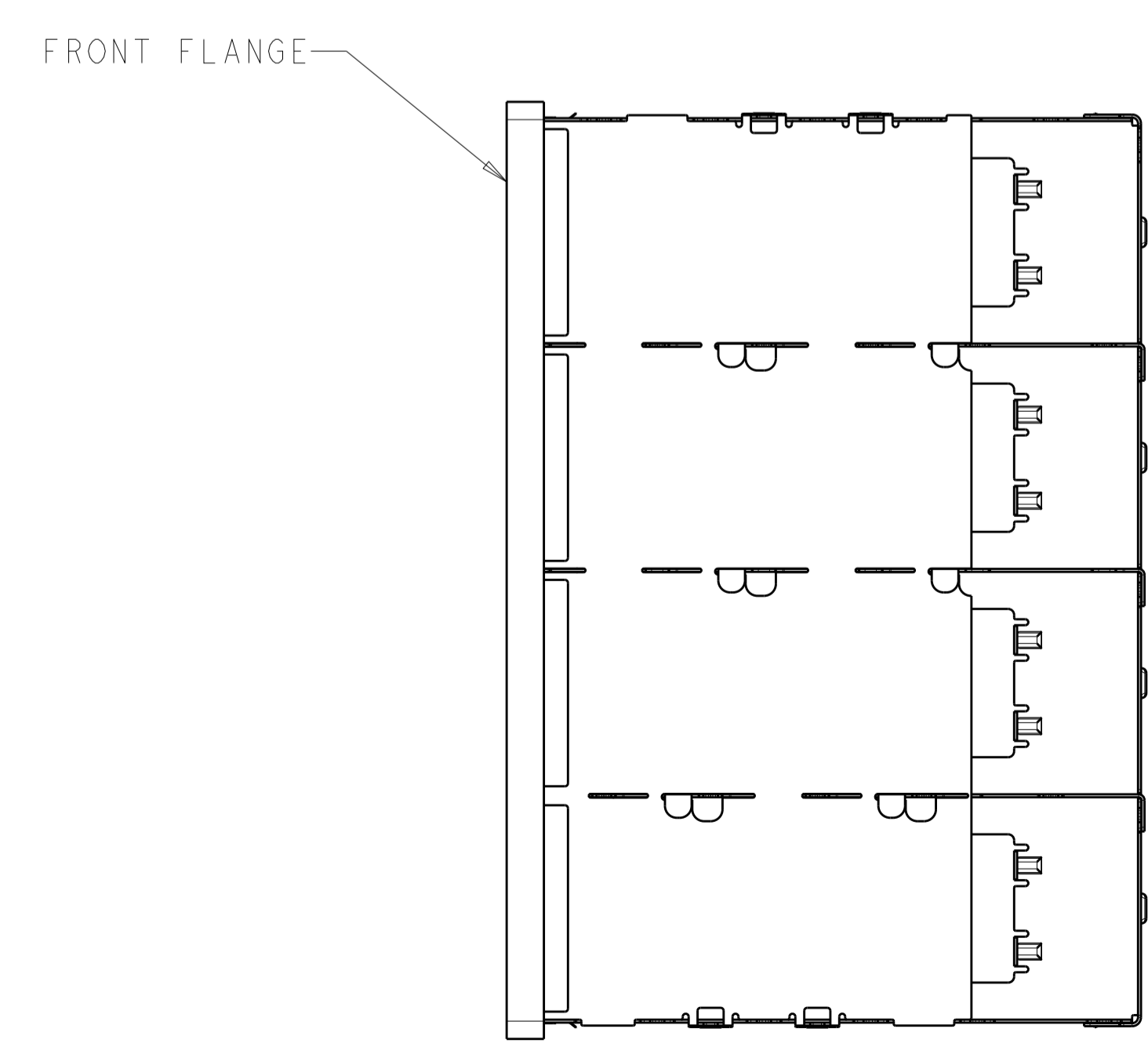
2007667-5



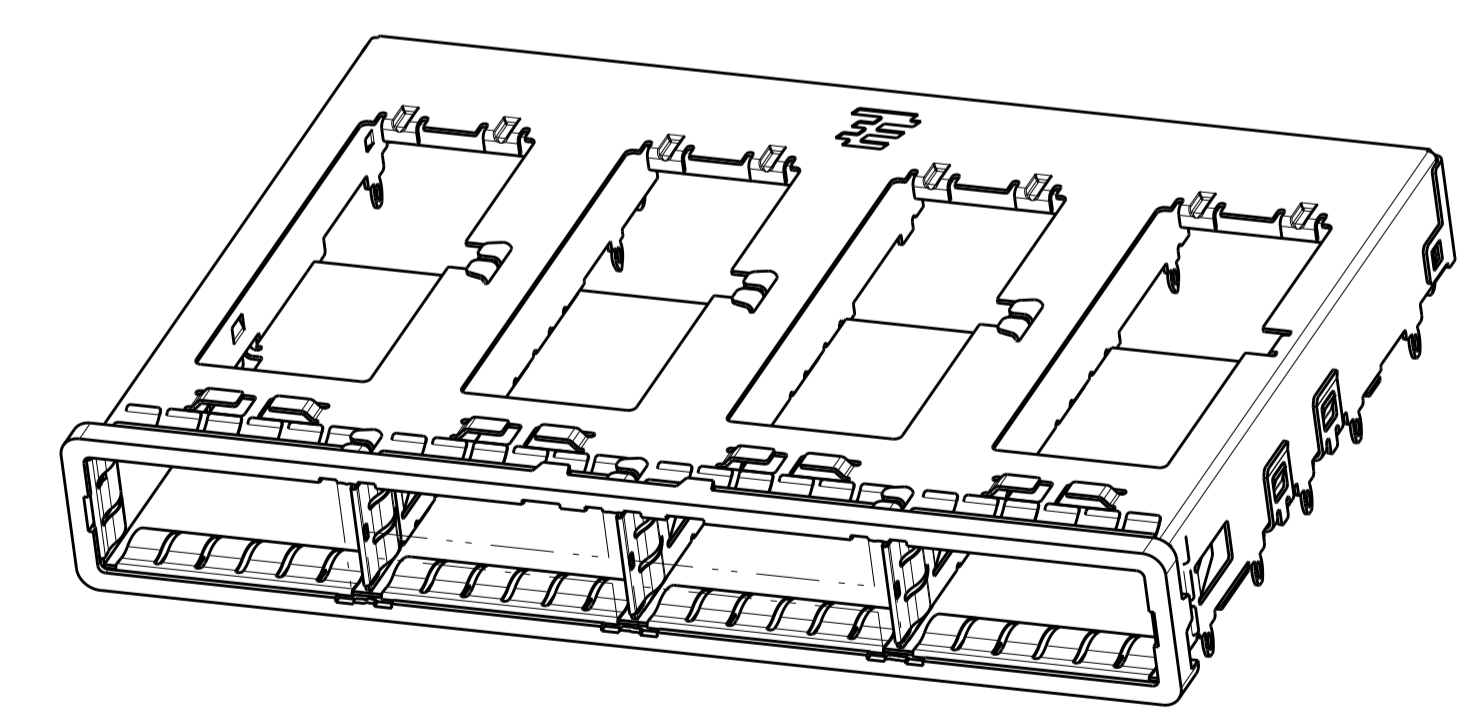
SEE DETAIL S



DETAIL S SCALE 20:1



FRONT FLANGE



	13.03	2007667-5
	11.83	2007667-3
	13.03	2007667-1
DIM A		PART NUMBER

OBSOLETE

THIS DRAWING IS A CONTROLLED DOCUMENT.

DIMENSIONS:	TOLERANCES UNLESS OTHERWISE SPECIFIED:	DWN C. VALENTINE 05JUN2008	CHK E. BRIGHT 05JUN2008	APVD E. BRIGHT 05JUN2008	NAME
mm	0 PLC ±0.1 2 PLC ±0.1 3 PLC ±0.013 4 PLC ±0.0001 ANGLES ±	PRODUCT SPEC	108-2286	APPLICATION SPEC	114-13218
MATERIAL	FINISH	WEIGHT	Customer Drawing	SIZE	CAGE CODE DRAWING NO
				A100779	C=2007667

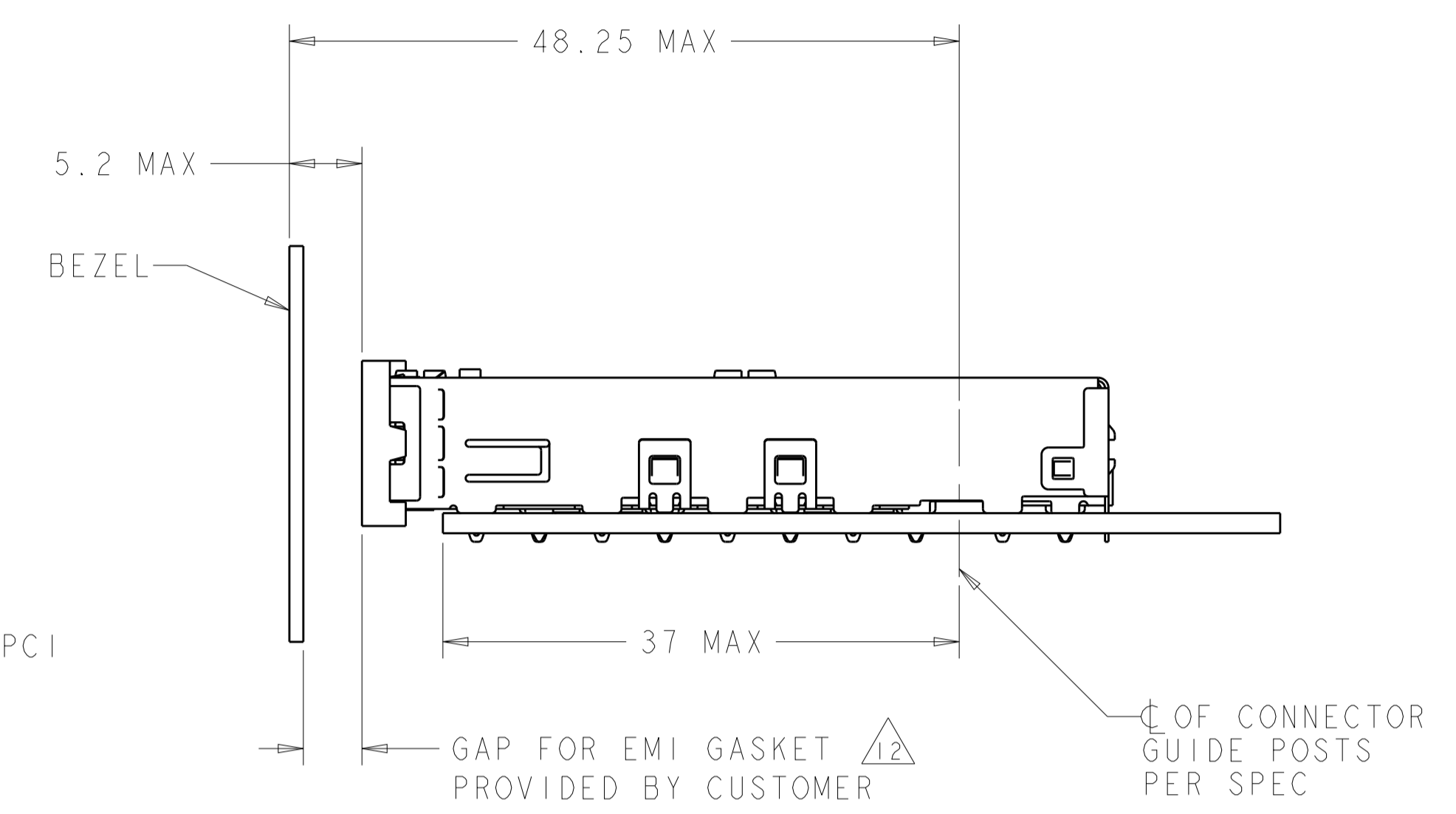
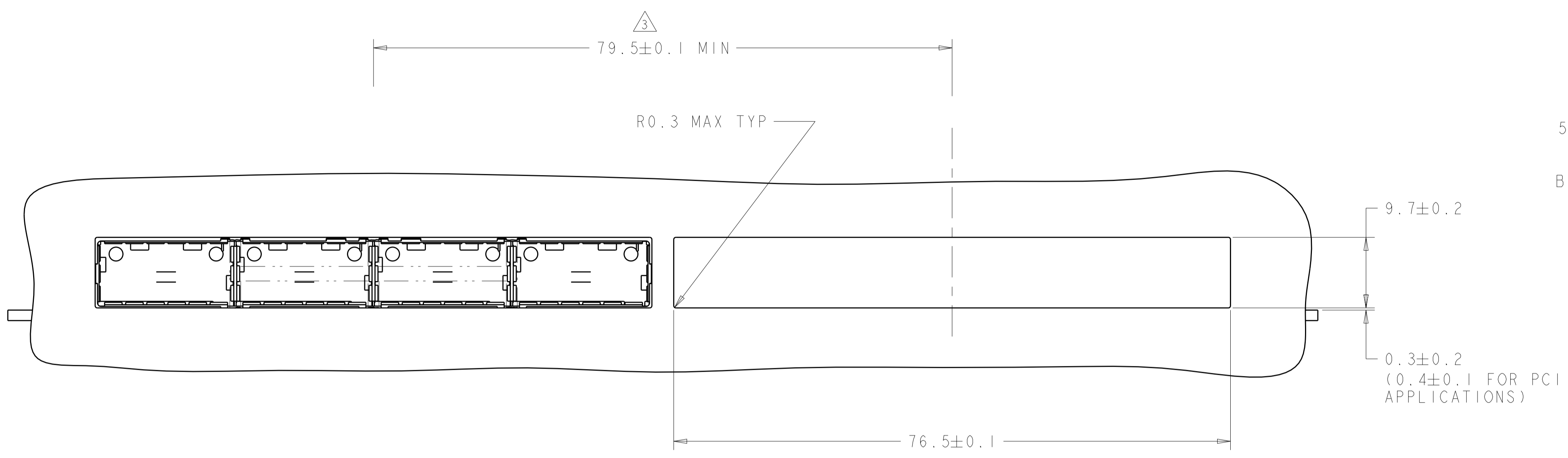
TE Connectivity  
 1X4 CAGE ASSEMBLY, BEHIND BEZEL, QSFP

RESTRICTED TO: -  
 SCALE 2:1 SHEET 1 OF 4 REV G

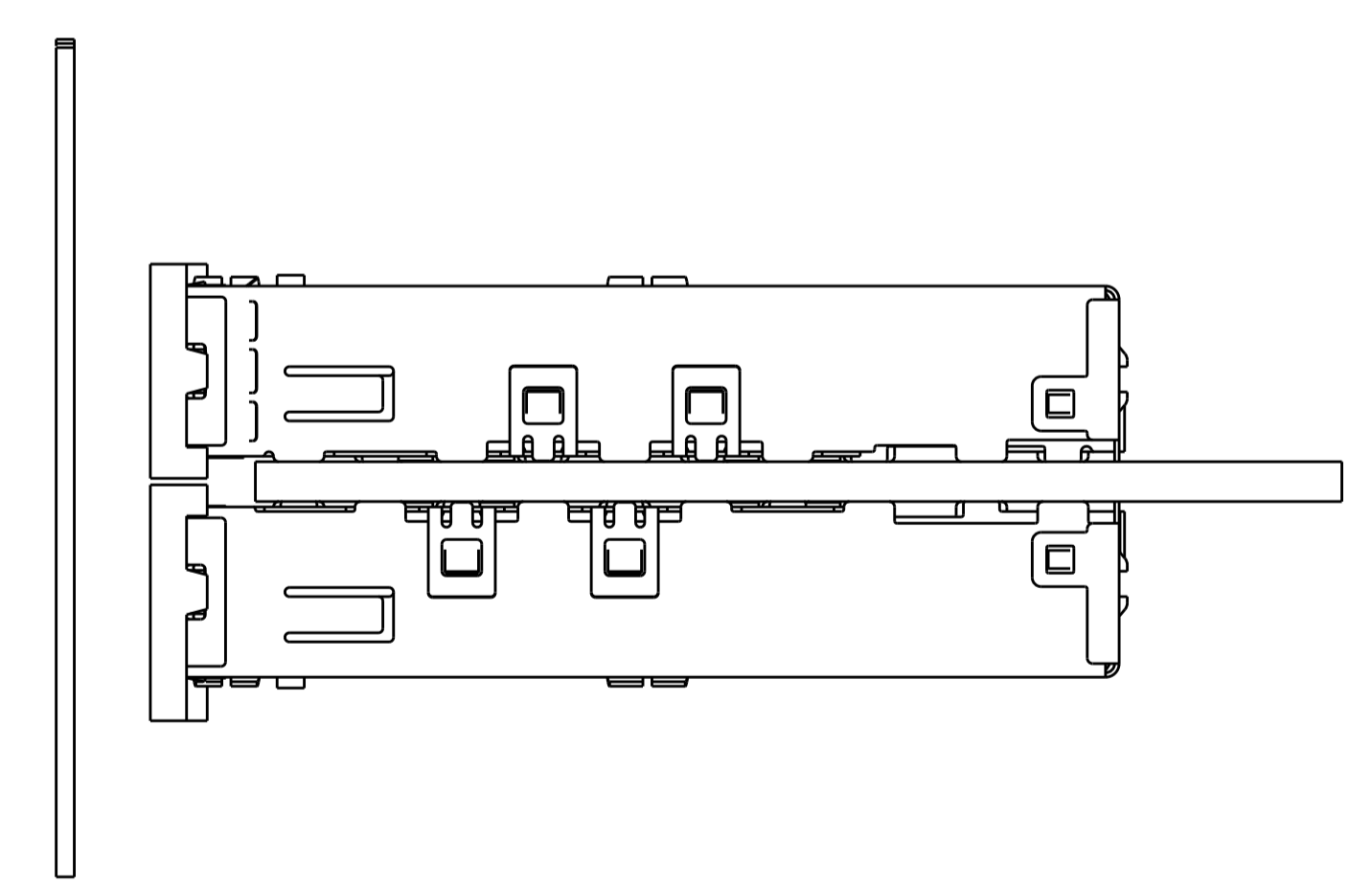
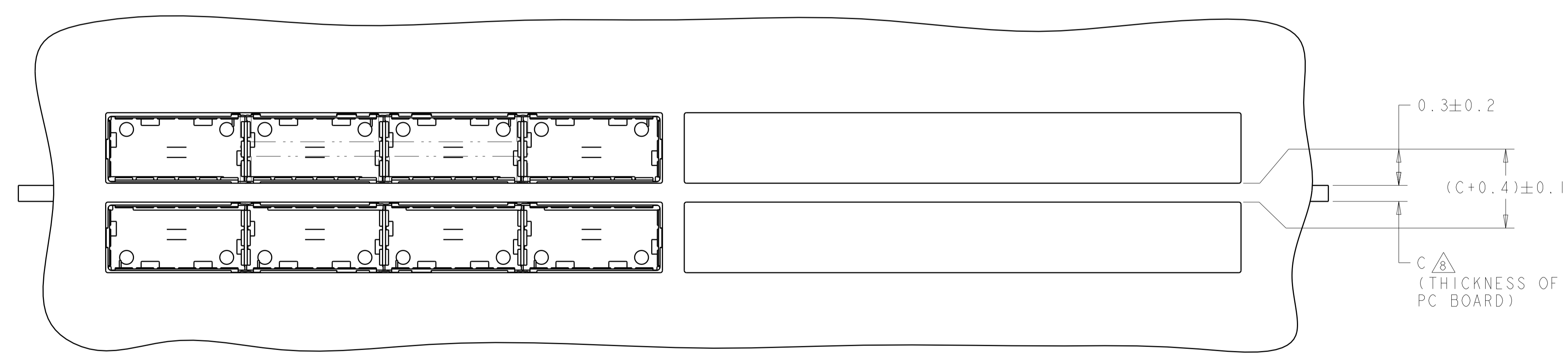
LOC	DIST	REV	DATE	BY	APPV
GP	00				

REVISIONS					
REV	DATE	BY	APPV	DESCRIPTION	DATE
-	-	-	-	SEE SHEET 1	-



ONE SIDED CONFIGURATION  
SCALE 5:2



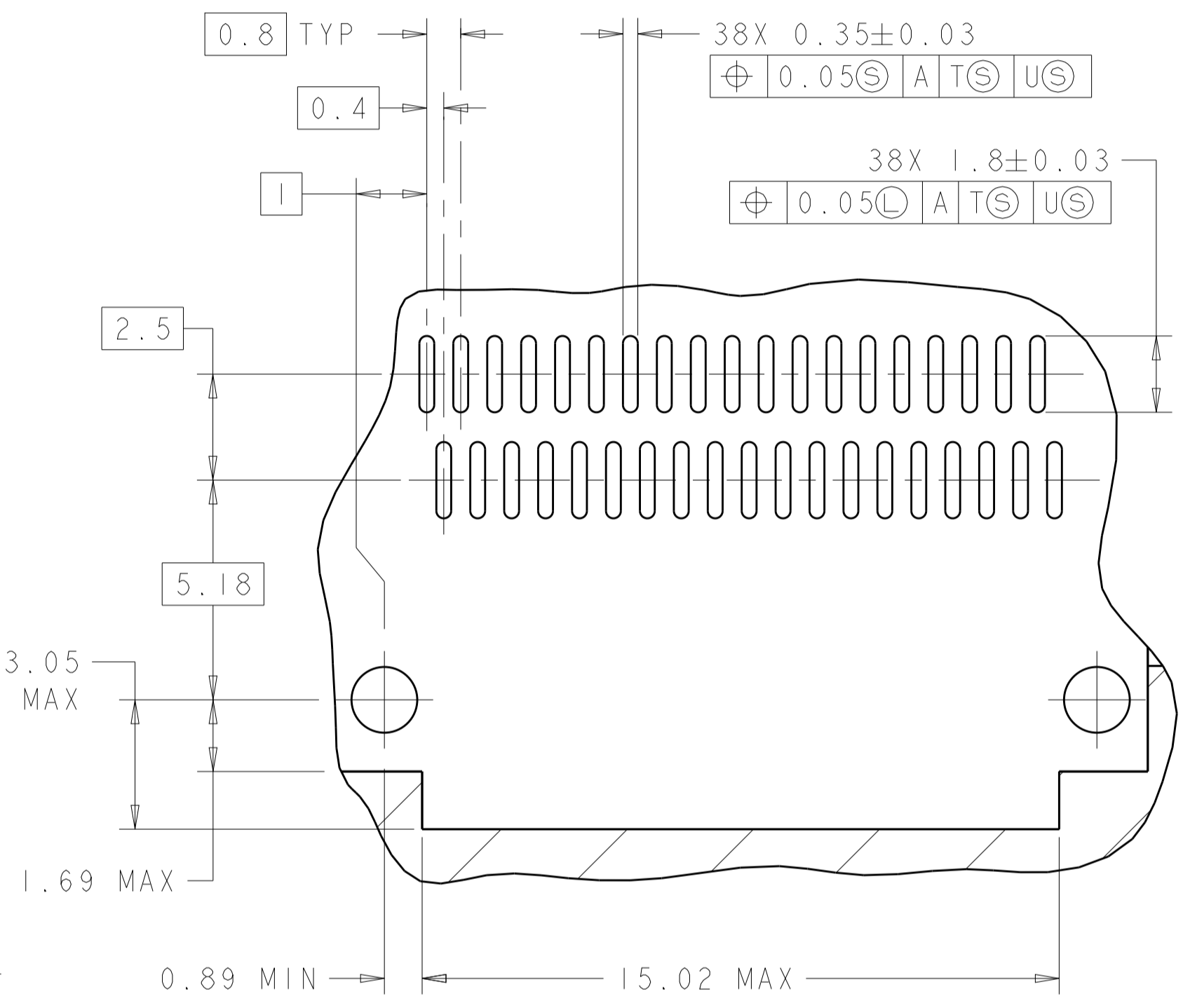
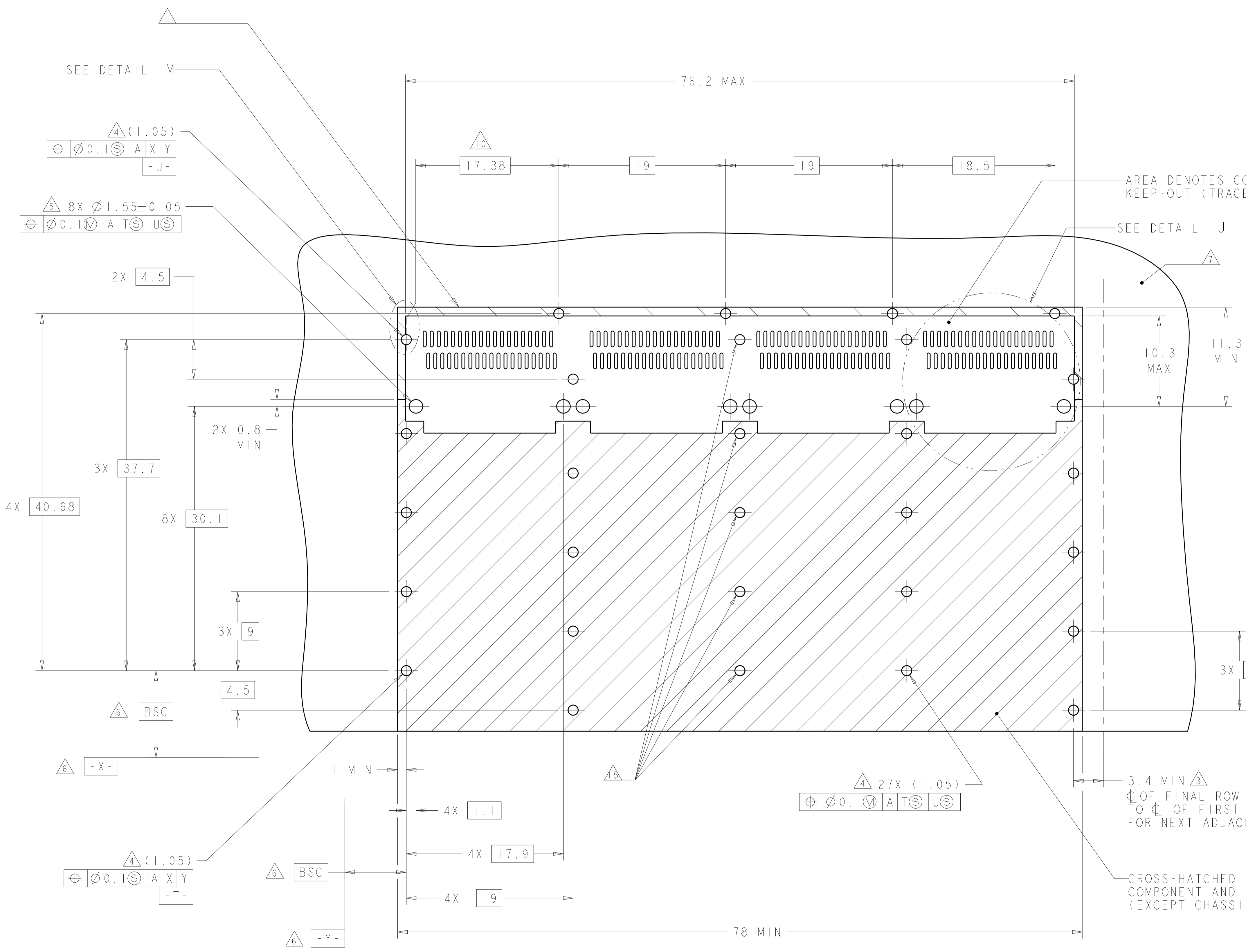
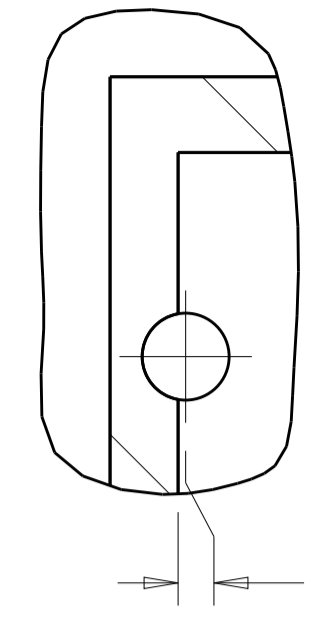
BELLY TO BELLY CONFIGURATION SIMILAR  
TO ONE SIDED EXCEPT WHERE NOTED  
SCALE 5:2

THIS PRODUCT HAS NOT COMPLETED VALIDATION/QUALIFICATION TESTING

THIS DRAWING IS A CONTROLLED DOCUMENT.		OWN: C. VALENTINE 05JUN2008	TE Connectivity
DIMENSIONS: mm		CHK: E. BRIGHT 05JUN2008	
TOLERANCES UNLESS OTHERWISE SPECIFIED:		APPV: F. BRIGHT 05JUN2008	NAME: 1X4 CAGE ASSEMBLY, BEHIND BEZEL, QSFP
0 PLC ±0.1	1 PLC ±0.1	PRODUCT SPEC	SIZE: CAGE CODE DRAWING NO
2 PLC ±0.1	3 PLC ±0.013	108-2286	RESTRICTED TO
4 PLC ±0.0001	ANGLES ±0.0001	APPLICATION SPEC	A100779C=2007667
MATERIAL: -	FINISH: -	114-13218	SCALE: 2:1 SHEET 2 OF 4 REV G
Customer Drawing		WEIGHT: -	

LOC	DIST	REV	DATE	BY	APPV
GP	00				

DETAIL M  
 SCALE 10:1



DETAIL J  
 4 PLACES  
 SCALE 8:1

RECOMMENDED PC BOARD LAYOUT  
 SINGLE SIDE MOUNT CONFIGURATION  
 SCALE 4:1

THIS PRODUCT HAS NOT COMPLETED VALIDATION/QUALIFICATION TESTING

AREA DENOTES COMPONENT  
 KEEP-OUT (TRACES PERMITTED)

SEE DETAIL J

3.4 MIN  
 Ø OF FINAL ROW OF HOLES  
 TO Ø OF FIRST ROW OF HOLES  
 FOR NEXT ADJACENT CAGE.

CROSS-HATCHED AREA DENOTES  
 COMPONENT AND TRACE KEEP-OUT  
 (EXCEPT CHASSIS GROUND)

THIS DRAWING IS A CONTROLLED DOCUMENT.		DWN C. VALENTINE 05JUN2008	TE Connectivity NAME 1X4 CAGE ASSEMBLY, BEHIND BEZEL, QSPF
DIMENSIONS: mm		CHK E. BRIGHT 05JUN2008	
TOLERANCES UNLESS OTHERWISE SPECIFIED:		APVD E. BRIGHT 05JUN2008	PRODUCT SPEC 108-2286
0 PLC ± 1 PLC ±0.1 2 PLC ±0.1 3 PLC ±0.013 4 PLC ±0.0001 ANGLES ±		APPLICATION SPEC 114-13218	RESTRICTED TO
MATERIAL	FINISH	WEIGHT	SIZE CAGE CODE DRAWING NO A100779C=2007667
Customer Drawing		SCALE 2:1	SHEET 3 OF 4 REV G