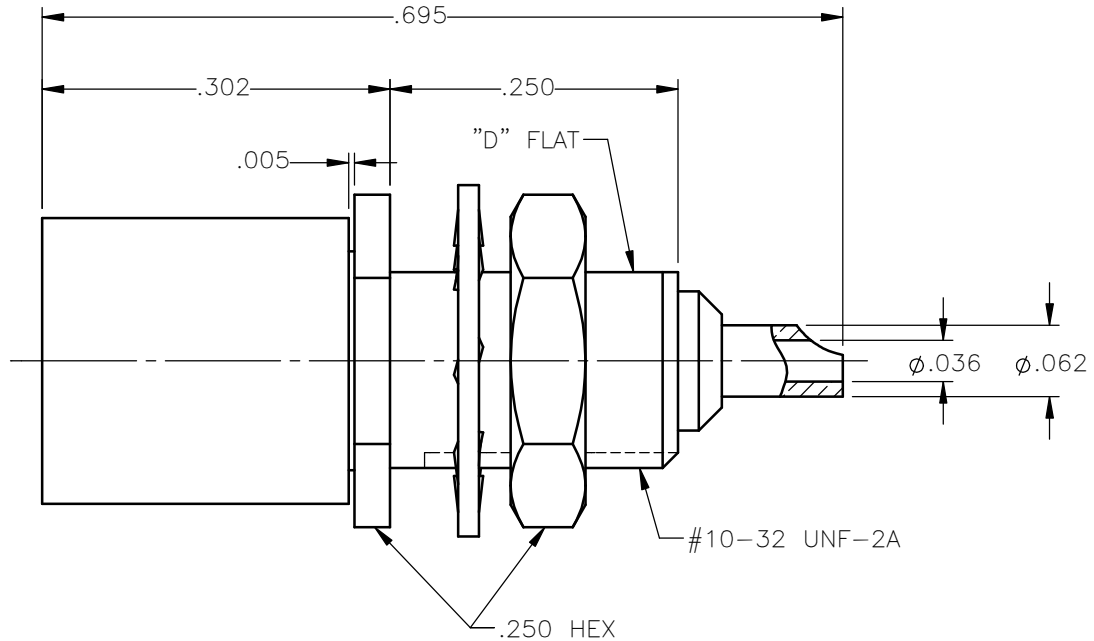


| REVISIONS | | | |
|-----------|-----------------|----------|----------|
| REV. | DESCRIPTION | DATE | APPROVED |
| A | INITIAL RELEASE | 08/30/12 | D.N. |





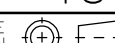
NOTES:

MATERIALS:

1. BODY & NUT = BRASS PER ASTM B16, ALLOY C36000, TEMPER H02.
2. INSULATOR = VIRGIN WHITE TEFLON PER ASTM D1710, GRADE 1, TYPE I, CLASS "B".
3. CONTACT & SPRING = BERYLLIUM COPPER PER ASTM B196, ALLOY C17300, TEMPER TD04.
4. LOCKWASHER = PHOSPHOR BRONZE PER ASTM B139, COPPER ALLOY C53400, TEMPER H04.
5. SLEEVE = BRASS PER C36000.

FINISHES:

1. CONTACT = GOLD PLATE PER MIL-G-45204, TYPE II, CLASS 1, GRADE C, OVER .00010 TO .00020 STRESS FREE SULFAMATE NICKEL PER QQ-N-290.
2. SPRING = NICKEL PLATE PER QQ-N-290, CLASS 1, GRADE G, EXCEPT .0001 TO .0002 THICK OVER .00005 TO .0001 THICK COPPER PER MIL-C-14550.
3. ALL OTHER METAL PARTS = GOLD PLATE PER MIL-G-45204, TYPE II, CLASS 0, GRADE C, OVER .00010 TO .00020 COPPER STRIKE PER MIL-C-14550.

| | | | | | | | |
|---|-----------------------|----------|---|--|----------|---|-----|
| UNLESS OTHERWISE SPECIFIED DIMENSIONS ARE IN INCHES TOLERANCES ON | DWN: | DATE |  | Property of Radiall | |  | |
| | D.N. | 08/30/12 | | This document cannot be reproduced or communicated to a third party without prior written permission of RADIALL. | | | |
| DECIMAL | ANGLE | CHKD: | DATE | SMB STRAIGHT FEMALE PLUG BULKHEAD FRONT MOUNT SOLDER POT RECEPTACLE | | | |
| | | J.S. | 08/30/12 | | | | |
| | | APVD: | DATE | SIZE | FSCM NO. | DWG NO. | REV |
| | | J.M. | 08/30/12 | A | 19505 | 2017-1511-000 | A |
| REFERENCE: | MATERIALS & FINISHES: | | SCALE | THIRD ANGLE PROJECTION | | SHEET 1 OF 1 | |
| ORIGINATED: D.N. DATE: 08/30/12 | SEE NOTES | | 6:1 |  | | | |

2017-1511-000