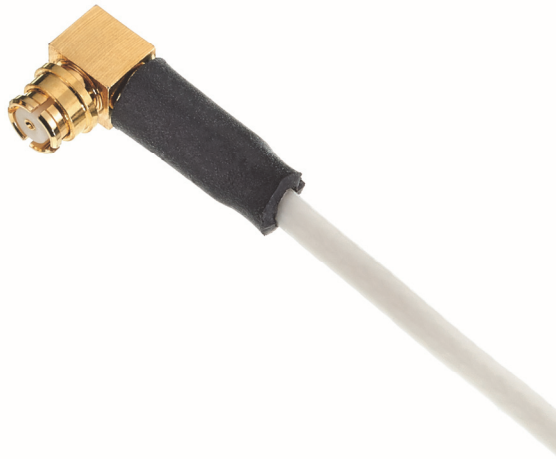




2000 Series SMP

Cost Effective 50 OHM SMP Interconnects



Product Description

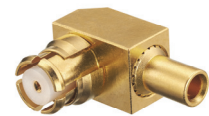
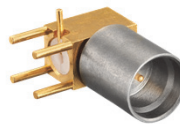
Winchester's Bomar brand 2000 Series 50 Ohm SMP features a snap-in, blind-mate, vibration-resistant interface in accordance with Mil-STD 348. The series can be designed into a wide range of applications, which include, Telecommunications, Test and Measurement, Security, and Medical.

The SMP Series connectors are blind-mating, quick-connect/quick-disconnect connectors that are easy to mate and un-mate in small spaces.

Designed to accommodate a large variety of flexible and semi-rigid cables.

Plug Connectors feature a crimp/solder for quick assembly or a solder/solder termination for improved electrical performance.

A full line of printed circuit board receptacles, and bulkhead receptacles are available.



- Winchester offers a wide variety of surface mount printed circuit board connectors, either edge mount or conventional for stacking.

- Printed circuit board connectors are available in right-angle or straight thru-hole designs for standard 0.062 PCBs.

- SMP connectors are available in either right-angle or straight for flexible and semi-rigid cables.

Specifications

Electrical

Impedance: 50 Ohms
 Frequency Range: 0 - 26 GHz
 Working Voltage: 335 VRMS at Sea Level
 Dielectric
 Withstanding Voltage: 1500 VRMS at Sea Level
 VSWR: MIL-PRF-39012
 Para 3.14, 1.3 Max
 Contact Resistance: Center Contact: ≤ 3 Milliohms
 Insulation Resistance: 5000 Meg Ohms Min

Environmental

Temperature Range: -65° C to + 165° C
 Vibration: Mil-STD-202
 Method 204 Cond. D
 Shock: Mil-STD-202
 Method 107 Cond. B

Material

Body: Brass/Black Nickel Plated
 Female Contact: Phosphor Bronze/BECU Gold
 Male Contact: Brass/Gold Plated
 Crimp Ferrule: Copper or Brass/Gold Plated
 Insulator: PTFE

Mechanical

Full Detent: 100 Cycles
 Limited Detent: 500 Cycles
 Smooth Bore: 1000 Cycles
 Engagement Forces:
 Full Detent: 15 lbs. Max. Retention: 5 lbs. Min.
 Limited Detent: 10 lbs. Max. 2 lbs. Min.
 Smooth Bore: 2 lbs. Max 0.5 lbs. Min.
 Misalignment: +/- 0.01 in
 Axial: 0.000/0.010

Part Numbers

Part Number	Description
2021A504-178	SMP 50 OHM Right Angle for RG178 and RG196
2021B504-316	SMP 50 OHM Right Angler for RG 174 and RG316
2021C504-316RD	SMP 50 OHM Right Angler for RD316 Double Shield
2021D504-405	SMP 50 OHM Right Angler for RG 405 / .086
2021AE504-047	SMP 50 OHM Right Angle for RG 405 / .047
2020A504-178	SMP Straight Plug for RG 178 / RG 196
2020B504-316	SMP Straight Plug for RG174 / RG 316
2020C504-316D	SMP Straight Plug for RD316 Double Shield
2022D504-405	Direct Solder SMP Straight Plug for 085 cable
2020A504-047	Direct Solder Straight Plug for .047 cable
2022B504-316	Direct Solder SMP Straight Plug for RG174 / RG316
2022C504-316D	Direct Solder SMP Straight Plug for RD316 Double Shield
2020A504-085	Direct Solder SMP Jack for .085 cable
2062EL10104	SMP 50 OHM Edge Launch Printed Circuit Board for .062
2062A510222	SMP Right Angle Mount Smooth Bore
2062AL10223	SMP Printed Circuit Board Limited Detent
2062SM10223	SMP SMT Plug
2032A504	SMP .254 Bullet



Winchester Electronics
 199 Park Road Extension, Suite 104
 Middlebury, Connecticut 06762
 203.741.5400 Phone
 203.741.5500 Fax
www.winchesterelectronics.com