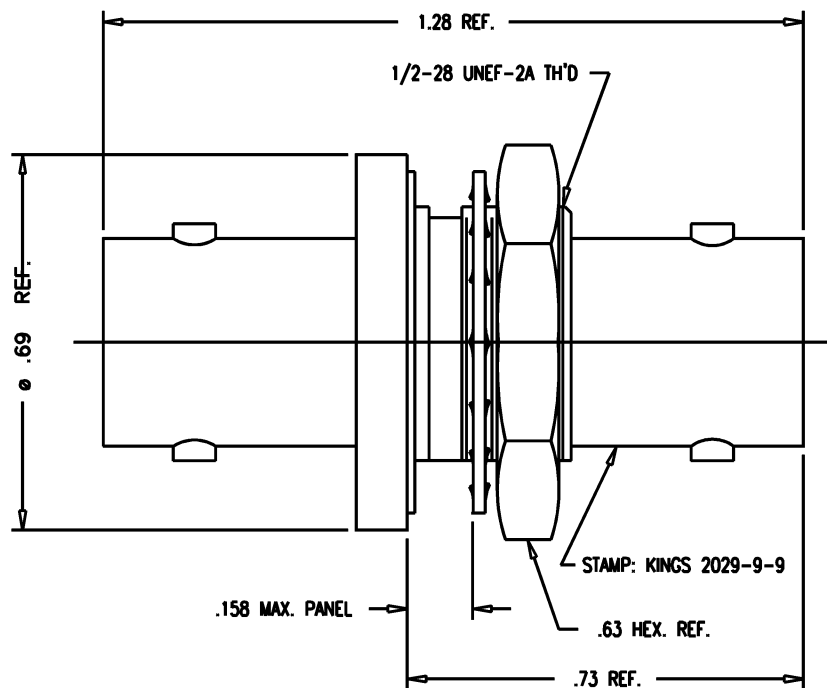


DASH NO.	M CODE	MADE FROM
----------	--------	-----------

# GSD



**NOTES:**

**1. MATERIALS:**

INSULATORS: TEFLON, ASTM-D4894  
 GASKET: SILICONE RUBBER, A-A-59588  
 LOCKWASHER: PHOSPHOR BRONZE, ASTM-B103  
 CENTER CONTACT: BER. COP., ASTM-B196  
 ALL OTHER METAL PARTS: BRASS, ASTM-B16

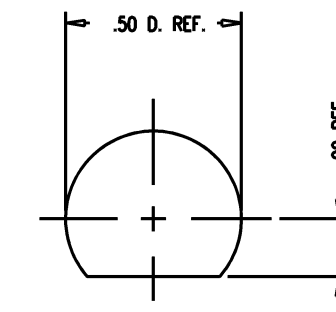
**2. FINISHES:**

CENTER CONTACT: GOLD, ASTM-B488  
 ALL OTHER METAL PARTS: NICKEL, SAE-AMS-QQ-N-290.

**3. ELECTRICAL CHARACTERISTICS:**

NOMINAL IMPEDANCE: 75 OHMS  
 VOLTAGE RATING: 500 VRMS  
 FREQUENCY RANGE: DC TO 2 GHz

**4. HEX NUT PART NUMBER 492-A-9 M06.**



MOUNTING HOLE

# GSD

2029-9-9

**REVISIONS**

ISSUE	CHANGES
1	CN 33546 A REDRAWN KH 11/19/91
2	CN 35369 C KVH 03/31/94
3	CN 39467 E DRK 05/15/06

SCALE 4:1

APPROX SURFACE AREA

USED ON

REF:

ADAPTER, F-F, BULKHEAD,  
75 BNC

DRAWN KH DATE 11/19/91

DESIGN DW DATE 11/19/91

APPR. DATE

**KINGS**  
ELECTRONICS CO., INC.  
ROCK HILL, SOUTH CAROLINA 29730

2029-9-9