

## Current Sensor HCME 800A-0-00-CDA-T

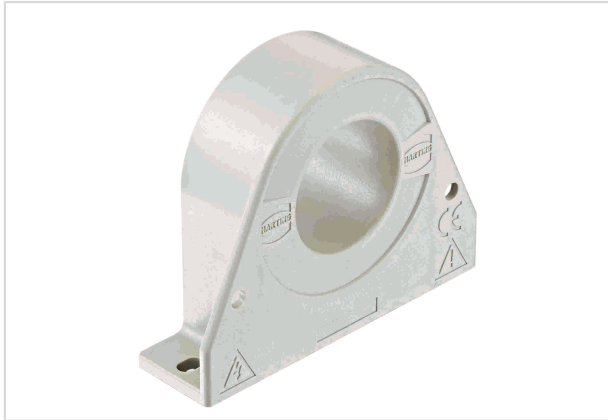


Image is for illustration purposes only. Please refer to product description.

Part number	20 32 080 0101
Specification	Current Sensor HCME 800A-0-00-CDA-T
HARTING eCatalogue	<a href="https://b2b.harting.com/20320800101">https://b2b.harting.com/20320800101</a>

### Identification

Category	Current measurement
Series	HCME
Element	Current sensor
Sensor technology	Hall-Effekt Open loop
Features	Measurable currents: AC, DC, pulsed, mixed ... Galvanic insulation between primary and secondary current Switchboard mounting Housing material and potting mass have a flammability rating UL 94 V-0 Applications: frequency converters, electrical drives, auxiliary converters

### Version

Termination	Metz Typ 320 (PT11504VBBN)
Field of application	Industrial version
Pack contents	Counter connector included

### Technical characteristics

$I_{PN}$ Nominal primary current	800 A
$I_{PM}$ Primary current, measuring range	0 ... $\pm 1,000$ A
$U_C$ Power supply	$\pm 15$ V $\pm 5$ %
$U_{OUT}$ Output voltage @ $I_{PN}$	4 V
$R_L$ Load resistance	$>1$ k $\Omega$
$I_C$ Current consumption @ $U_{C\ min}$	25 mA



## Technical characteristics

R <sub>IN</sub> Insulation resistance	>500,000 kΩ
X Overall accuracy @ I <sub>PN</sub> , T <sub>A</sub> = 25 °C	±1 %
E <sub>L</sub> Linearity	<0.5 %
U <sub>O</sub> Offset voltage @ I <sub>P</sub> = 0 A, T <sub>A</sub> = 25 °C	±10 mV
U <sub>OOL</sub> Offset after I <sub>Pmax</sub>	±10 mV
U <sub>OT</sub> maximum temperature drift of U <sub>O</sub>	±1 mV/K
U <sub>outT</sub> thermal gain drift	± 0,05 %/K
t <sub>r</sub> Response time @ I <sub>PN</sub>	<3 μs
di/dt with optimal coupling	>50 A/μs
f Frequency	0 ... 50 kHz
T <sub>A</sub> Ambient temperature	-25 ... +85 °C
T <sub>S</sub> Storage temperature	-25 ... +90 °C
U <sub>D</sub> Test voltage, effective (50 Hz, 1 min)	3.5 kV Primary - secondary
U <sub>B</sub> Rated voltage	690 V
L <sub>S</sub> Clearance distance	22.7 mm
K <sub>S</sub> Creepage distance	36.6 mm
Tightening torque	3.2 Nm (2x steel screw M4 - Vertical)

## Material properties

Material (hood/housing)	Polycarbonate (PC)
Material flammability class acc. to UL 94	V-0
RoHS	compliant
ELV status	compliant
China RoHS	e
REACH Annex XVII substances	Not contained
REACH ANNEX XIV substances	Not contained
REACH SVHC substances	Not contained

## Specifications and approvals

Specifications	EN 50178 IEC 61373
----------------	-----------------------