

THIS DRAWING IS UNPUBLISHED. RELEASED FOR PUBLICATION  
 © COPYRIGHT 2011 BY TYCO ELECTRONICS CORPORATION. ALL RIGHTS RESERVED.

LOC		DIST		REVISIONS			
DW		P	LTR	DESCRIPTION	DATE	DWN	APVD
		A		RELEASED	23NOV12	JL	WK

NOTES:

1. MATERIAL:

- 1.1 HOUSING: LCP WITH 30% G.F, UL94 V-0; COLOR: BLACK
- 1.2 CONTACT: BRASS
- 1.3 SHELL: STAINLESS STEEL
- 1.4 MYLAR: PET, YELLOW COLOR

2. FINISH:

- 2.1 CONTACT:
  - GOLD FLASH ON CONTACT AREA.
  - 2.54um[100u"] MIN. MATTE-TIN PLATING ON SOLDER TAIL.
  - 1.27um[50u"] MIN. NICKEL UNDERPLATING OVERALL.
- 2.2 SHELL:
  - 2.54um [100u"] MIN. NICKEL PLATING OVERALL.
  - 2.45um [100u"] MIN. CU UNDERPLATING OVERALL

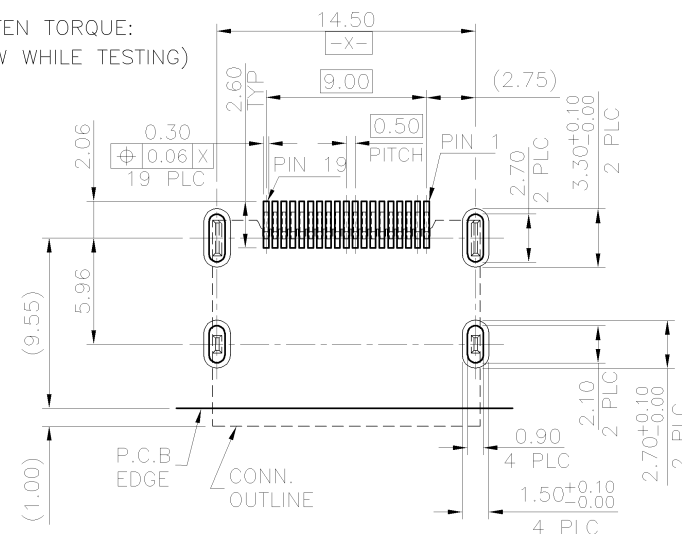
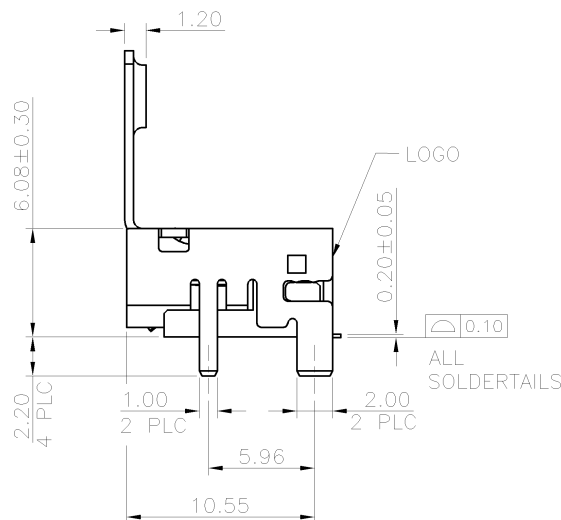
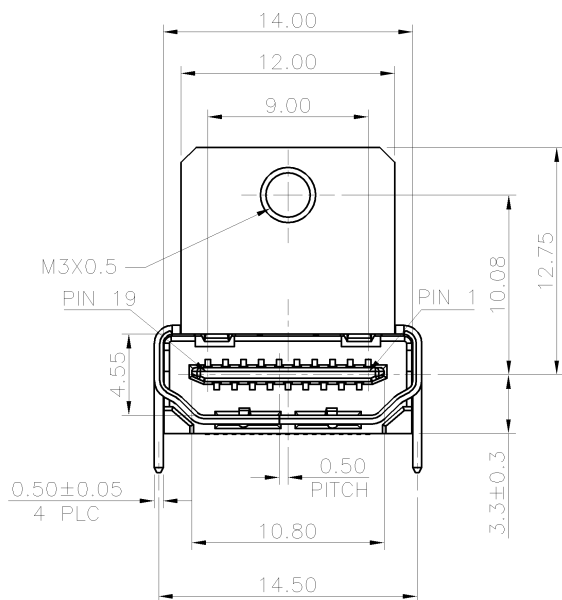
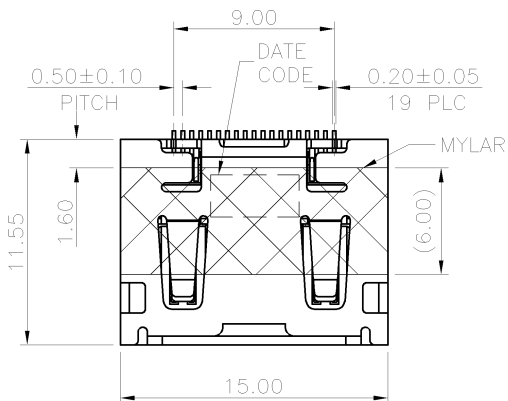
3. REFLOW SOLDER CAPABLE TO 260°C PER TE SPEC. TEC-109-201, CONDITION B.

4. LOW HALOGEN SPEC:

- CHLORINE(CI): 900PPM MAX
- BROMINE(Br): 900PPM MAX
- Cl+Br: 1500PPM MAX

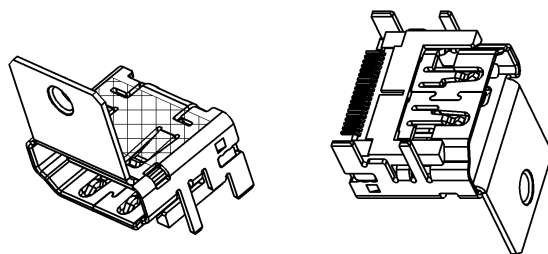
5. THREADED INSERTS AND SCREWLOCKS MUST WITHSTAND TIGHTEN TORQUE:

5.0kg-cm MAX. (NEED TO ADD THE WASHER ON THE SCREW WHILE TESTING)



RECOMMENDED P.C.B LAYOUT <TOP VIEW>  
 TOLERANCE: ±0.05; THICKNESS: 1.6mm

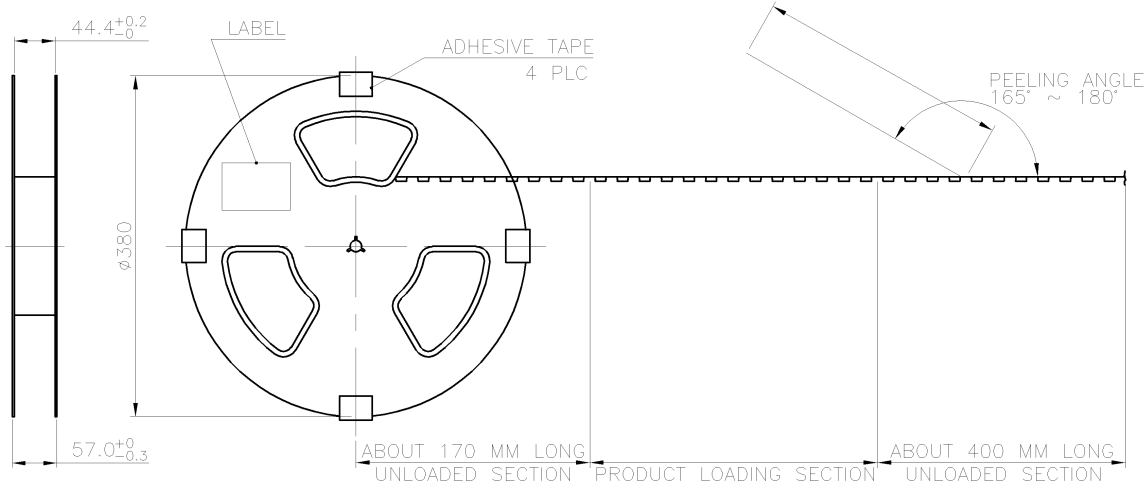
2041529-1  
 PART NUMBER



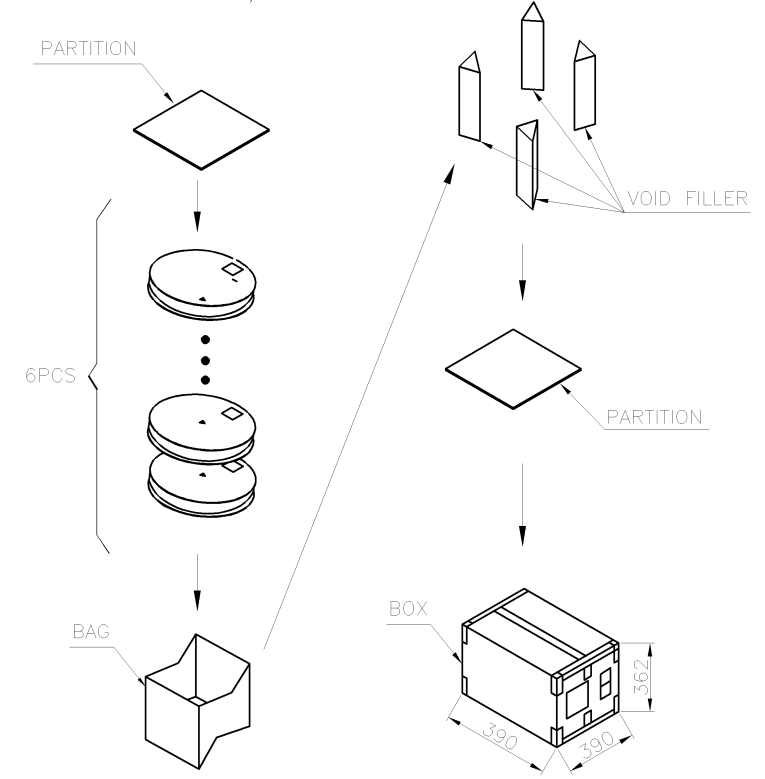
THIS DRAWING IS A CONTROLLED DOCUMENT.		DWN	J. LAI	23NOV2012	 TE Connectivity	NAME		HDMI CONNECTOR, TYPE A, RECEPTACLE, RIGHT ANGLE, SMT	
DIMENSIONS: mm		CHK	S. CHIEN	23NOV2012		PRODUCT SPEC			108-57917
TOLERANCES UNLESS OTHERWISE SPECIFIED:		APVD	W. KODAMA	23NOV2012		APPLICATION SPEC			
0 PLC ± - 1 PLC ± 0.3 2 PLC ± 0.2 3 PLC ± 0.15 4 PLC ± - ANGLES ± 3'		WEIGHT	2.38 GRAMS	SIZE		A3	CAGE CODE		00779
MATERIAL SEE NOTE		FINISH SEE NOTE		DRAWING NO		C-2041529		RESTRICTED TO	
CUSTOMER DRAWING				SCALE	SHEET	1 of 2		REV	
								A	

THIS DRAWING IS UNPUBLISHED. RELEASED FOR PUBLICATION  
 © COPYRIGHT 2011 BY TYCO ELECTRONICS CORPORATION. ALL RIGHTS RESERVED.

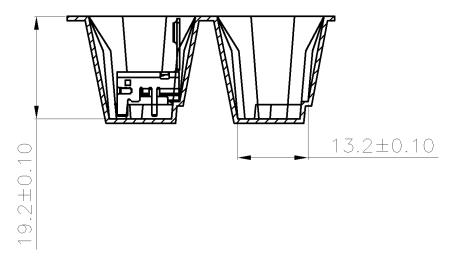
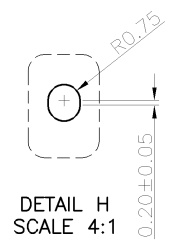
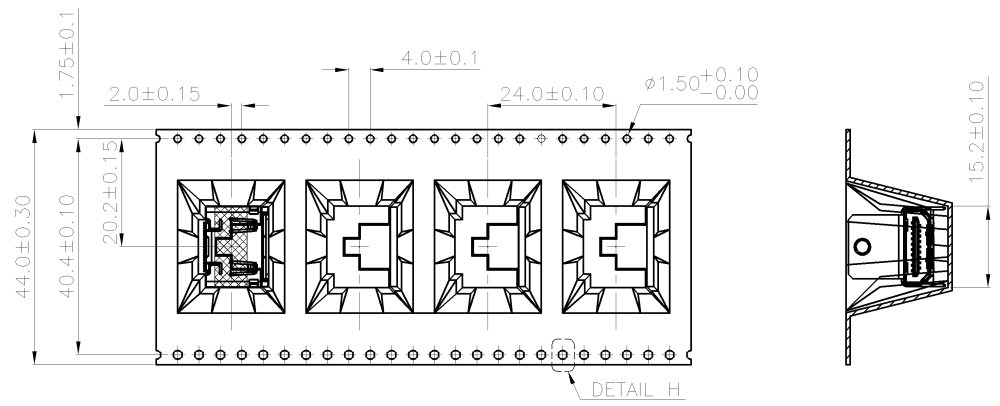
LOC	DIST	REVISIONS					
DW		P	LTR	DESCRIPTION	DATE	DWN	APVD
				SEE SHEET 1.			



- NOTES :
- MATERIAL :  
 COVER TAPE : PET, COLOR: TRANSPARENT  
 CARRIER TAPE : POLYSTYRENES, COLOR: BLACK.  
 REEL : POLYSTYRENES, COLOR: BLUE.  
 BOX: CORRUGATED FIBER.  
 BAG: PE, COLOR: TRANSPARENT.
  - PEELING RESISTANCE : 10gf~130gf
  - PEELING SPEED : 300mm/MINUTES



PULL OUT DIRECTION →



6.60 KG	2.45 KG	170 PCS	6 PCS	1020 PCS
GROSS WEIGHT	NET WEIGHT	PCS/REEL	REEL/BOX	PCS/BOX

THIS DRAWING IS A CONTROLLED DOCUMENT.

DIMENSIONS: mm	TOLERANCES UNLESS OTHERWISE SPECIFIED:	DWN	---
	0 PLC ±	CHK	---
	1 PLC ±	APVD	---
	2 PLC ±	PRODUCT SPEC	---
	3 PLC ±	APPLICATION SPEC	---
	4 PLC ±	WEIGHT	---
	ANGLES ±	CUSTOMER DRAWING	---
MATERIAL	FINISH	SIZE	A3
		CAGE CODE	00779
		DRAWING NO	C=2041529
		RESTRICTED TO	---
		SCALE	---
		SHEET	2 of 2
		REV	A

**STE** TE Connectivity

HDMI CONNECTOR, TYPE A, RECEPTACLE, RIGHT ANGLE, SMT