

This document, including the design, configuration and mechanical features revealed herein are the sole, confidential and proprietary property of Winchester Interconnect. Reproduction or use thereof, in whole or part, is prohibited without the prior written consent of Winchester Interconnect.

REV	DESCRIPTION	DATE	APRD
A	ECO-14291	9/23/21	ASNZ

**NOTES:**

**MATERIAL:**

STAINLESS STEEL 303 PER ASTM A484 AND A582.  
 BERYLLIUM COPPER PER ASTM-B-196  
 PTFE FLUOROCARBON PER ASTM-D-1710

**FINISH:**

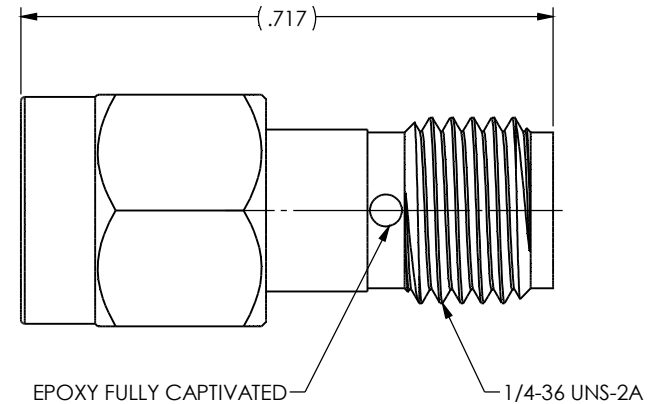
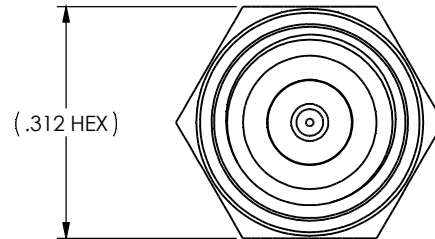
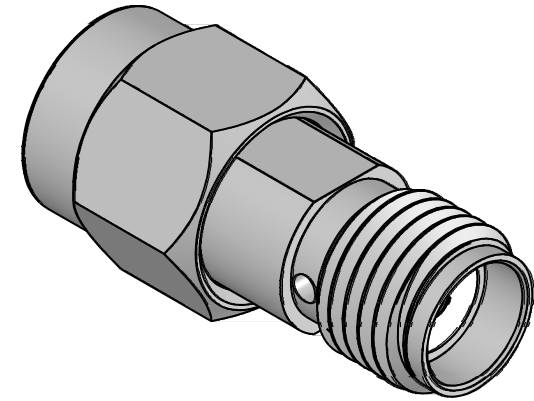
CENTER CONDUCTORS AND SOLDER COMPONENTS SHALL BE GOLD PLATED PER MIL-DTL-45204D TYPE II, CLASS 1 OVER NICKEL PLATE PER SAE AMS-QQ-N-290. BODY AND BODY COMPONENTS SHALL BE PASSIVATED PER ASTM A380.

**ELECTRICAL:**

NOMINAL IMPEDANCE: 50 OHMS.  
 FREQUENCY: DC-27 GHz  
 VSWR: 1.20 TO 27GHz

**MECHANICAL:**

CONNECTOR DURABILITY: 500 CYCLES MINIMUM  
 RECOMENDED MATIG TORQUE: 8 TO 10 IN-LBS.



UNLESS OTHERWISE SPECIFIED:  
 DIMENSIONS ARE IN INCHES  
  
 TOLERANCES:  
 FRACTIONAL: ±1/64  
 .XX: ±0.010  
 .XXX: ±0.005  
 ANGLES: X°: ±1°  
 MACHINED SURFACES:  
 63/



DRAWN JVK	DATE 4/18	 <b>Winchester Interconnect</b> 245 Lynnfield St. Peabody, MA 01960		
APPR.	DATE			
APPR.	DATE	TITLE: SMA JACK TO 2.9 mm PLUG		
dcamelio		SIZE B	DWG. NO. 21-924-0000-01	REV A
THIRD ANGLE PROJECTION		SH 1 OF 1		