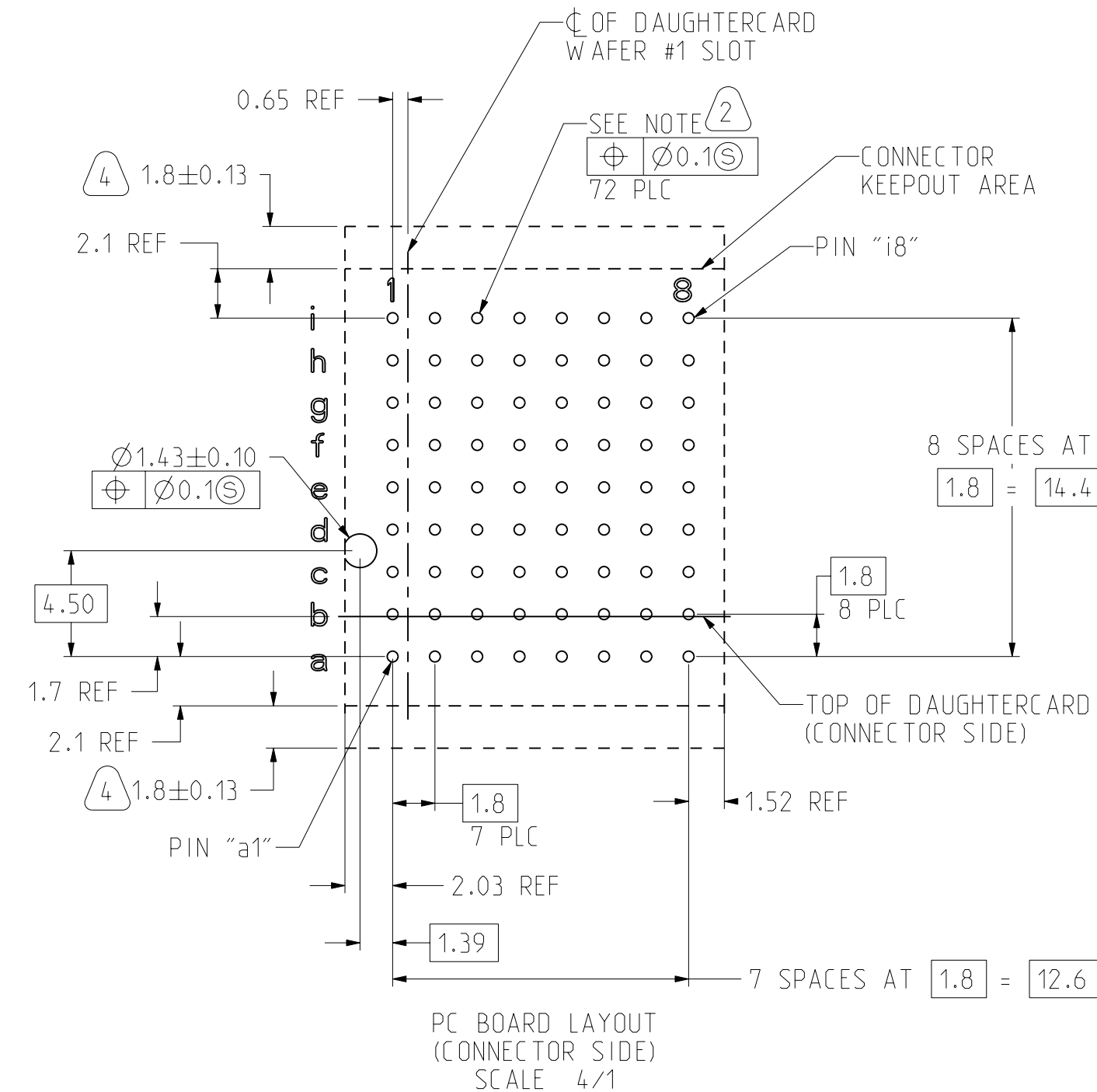
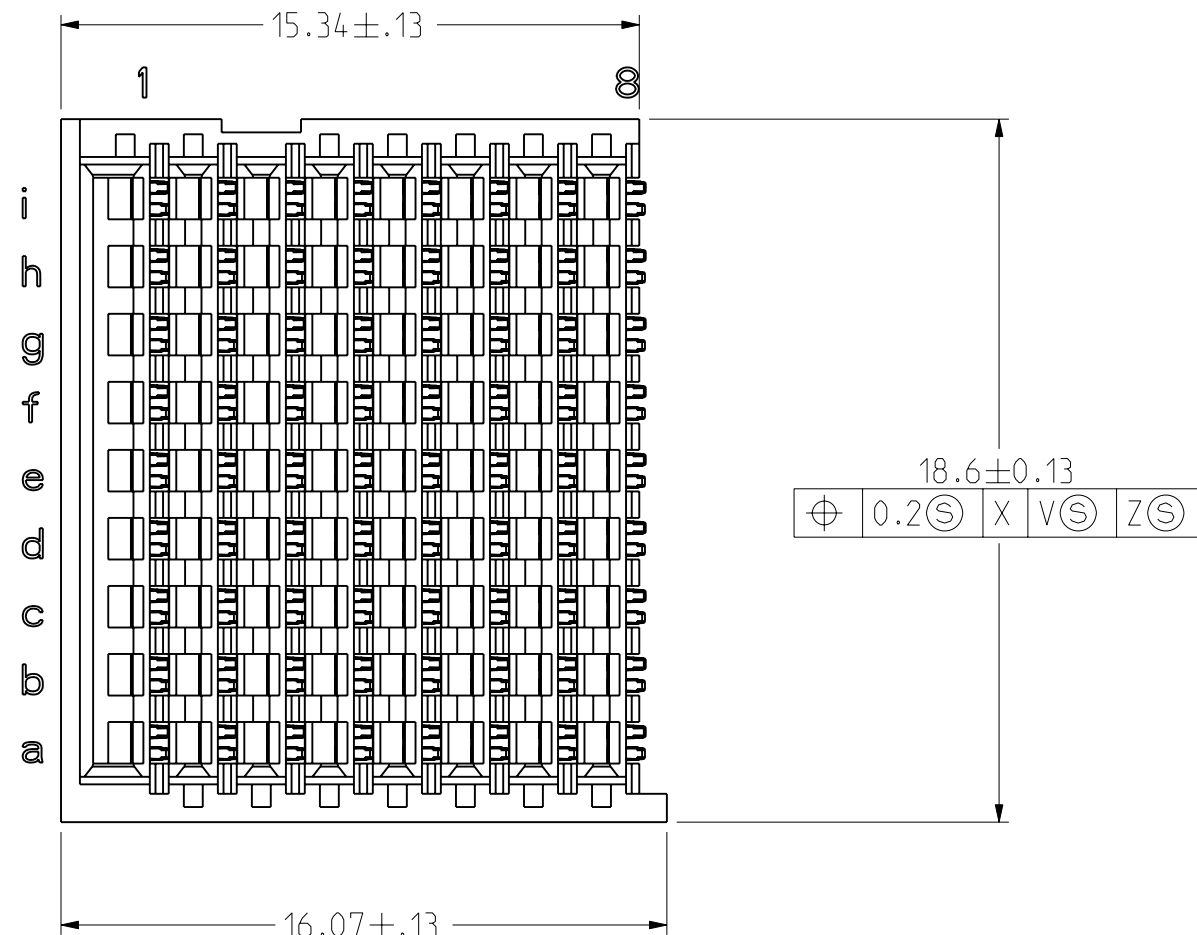
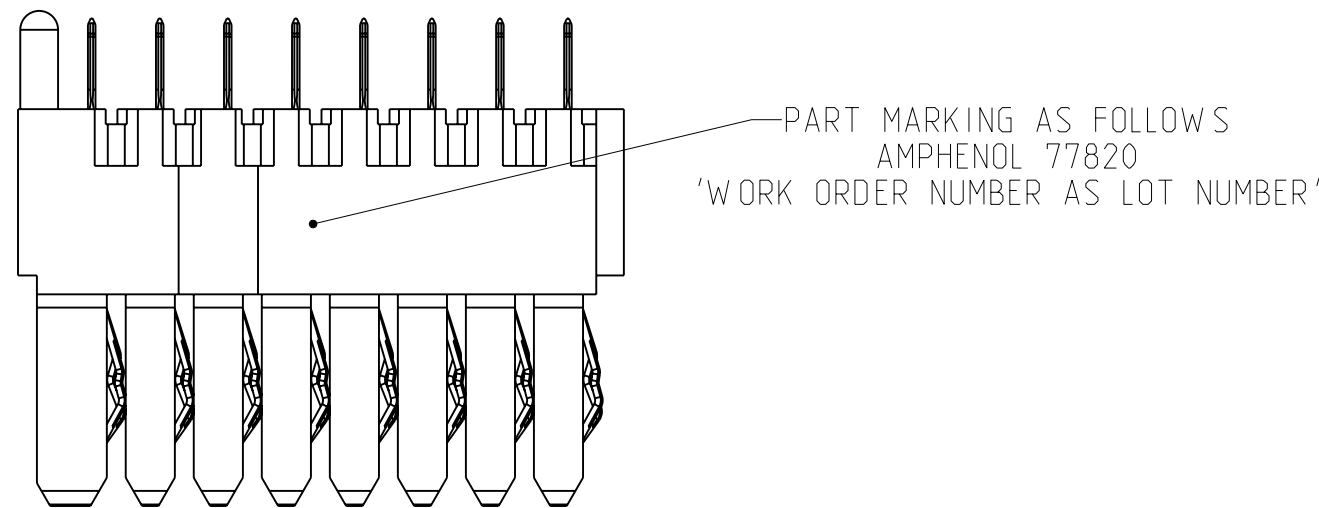
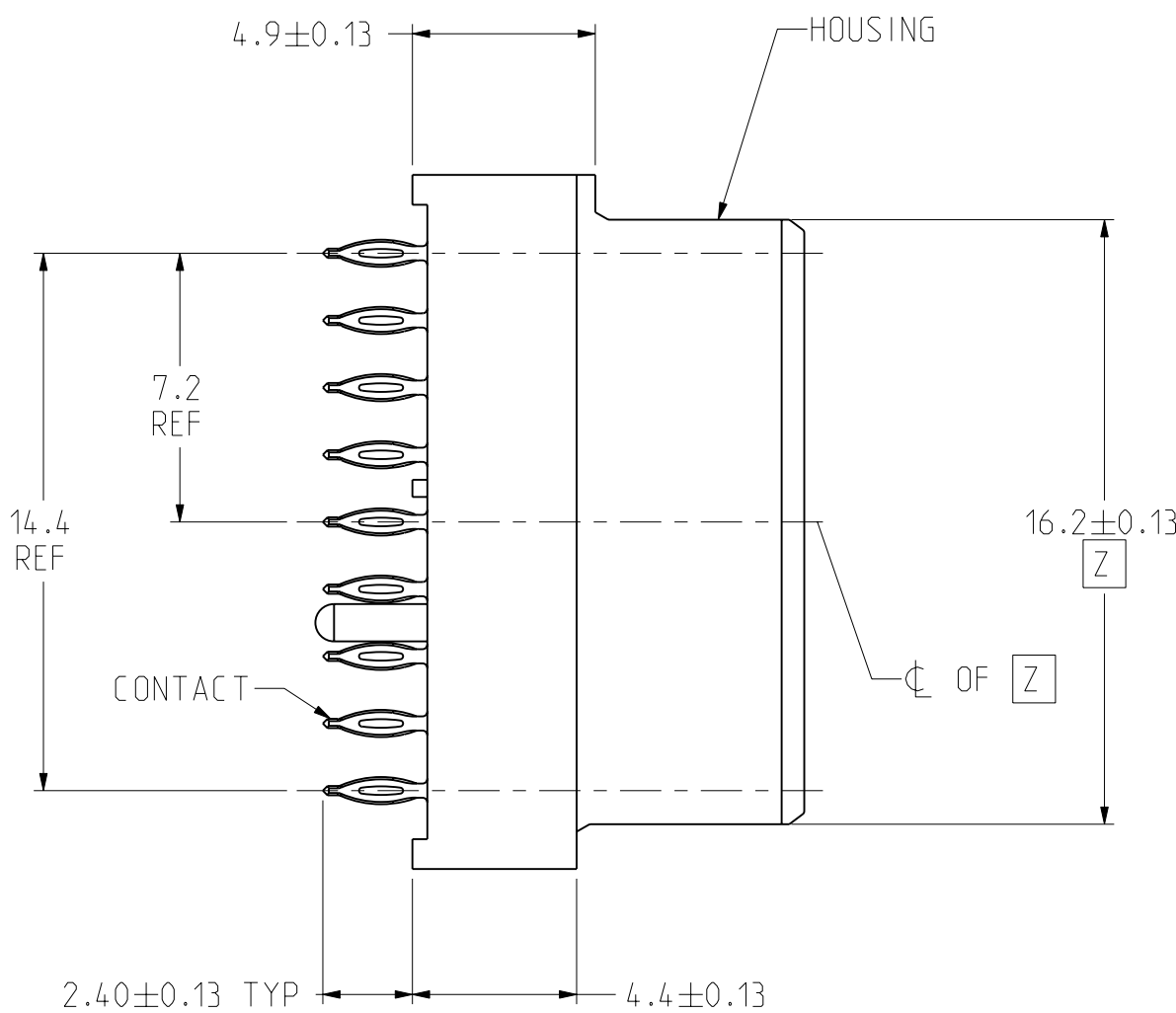


REV. A		SHEET 1 OF 2		DOCUMENT NO. RVPX-J08EXX	
REVISIONS M					
LTR	DESCRIPTION			DATE	
A	INITIAL RELEASE			11-FEB-16	



PART MARKING AS FOLLOWS  
'AAO PART NUMBER' (SEE TABLE 1)  
'DATE CODE'

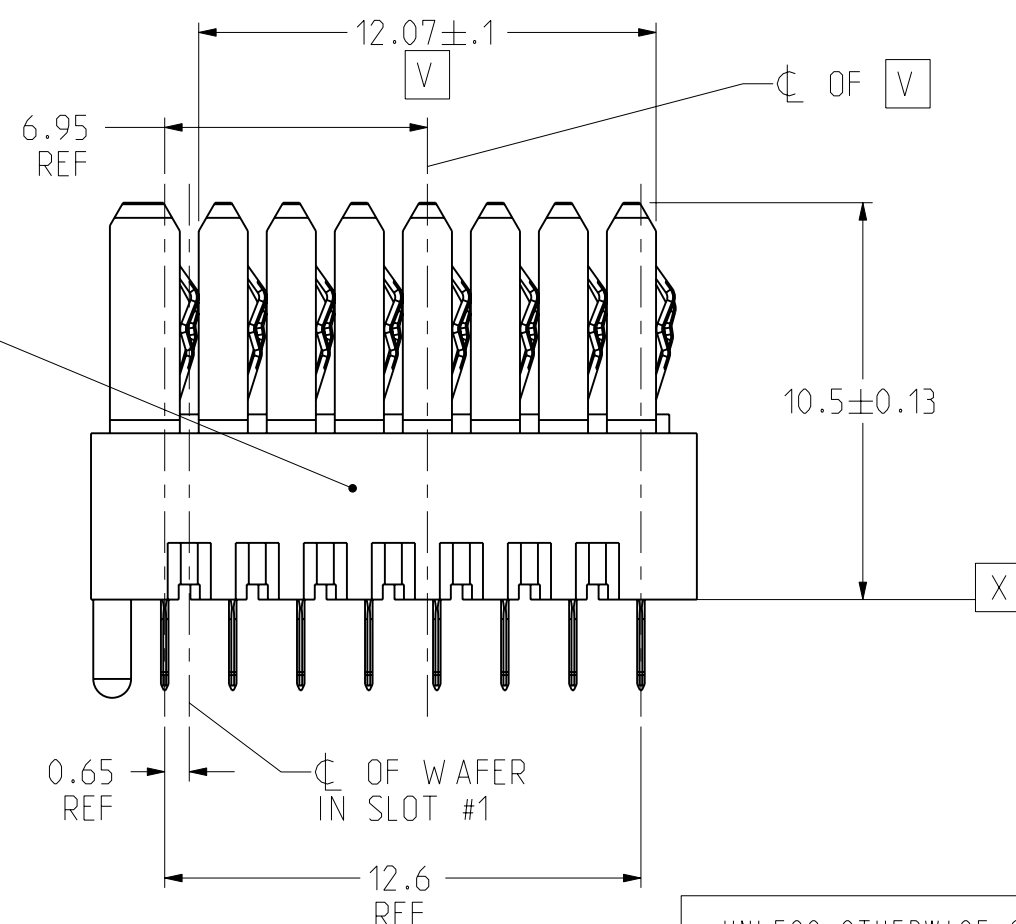


TABLE 1

PLATING THICKNESS AND MATERIAL BY PART NUMBER			
PART NUMBER	GOLD IN CONTACT AREA	COMPLIANT	NICKEL OVERALL
RVPX-J08EM1	50 μ-INCH MIN	50 μ-INCH MIN TIN	50 μ-INCH MIN
RVPX-J08EM2	50 μ-INCH MIN	50 μ-INCH MIN TIN-LEAD	50 μ-INCH MIN
RVPX-J08EC1	30 μ-INCH MIN	50 μ-INCH MIN TIN	50 μ-INCH MIN
RVPX-J08EC2	30 μ-INCH MIN	50 μ-INCH MIN TIN-LEAD	50 μ-INCH MIN

4 ADDITIONAL CONNECTOR-SIDE KEEPOUT AREA REQUIRED IF CONNECTOR-SIDE EXTRACTION TOOL IS TO BE USED.

3 SEE TABLE 1 FOR PART NUMBER AND FINISHES

2 PTH CALLOUT TYPICAL HOLE  
 Ø0.63-.67 DRILL  
 Ø0.56 ±.05 FINISH HOLE  
 Ø1.02 PAD

1 HOUSING: GLASS FILLED LCP, UL94 - V0  
 CONTACT: Cu ALLOY

UNLESS OTHERWISE SPECIFIED		SPECIFICATIONS		POS	QTY	PART NUMBER	DESCRIPTION	NOTE
LINEAR DIMENSIONS ARE IN MILLIMETERS		MATERIAL SPEC.		PARTS LIST				
TOLERANCES:		N/A		AMPHENOL CORPORATION				
.XXXX = ±	ANGLES = ±2°			40-60 DELAWARE AVENUE SIDNEY, NY, 13858				
.XXX = ±				CONNECTOR ASSEMBLY, BACKPLANE				
.XX = ±.1				VERTICAL RECEPTACLE, 8 POS., LEFT END				
.X = ±.13				RVPX				
DIM. & TOL. PER ASME Y14.5M;		PROCESS SPEC.		APPROVALS				
DRM PER MIL-DTL-31000;		9-3895		PREPARED BY S. LANGELIER				
OTHER Amphenol Stds. PER 9-3800		9-3856-5		ENGINEER IN CHARGE S. LANGELIER				
LEGENDS:				DESIGN MANAGER J. PAUL				
=FLAG NOTE CALL OUT REFERENCE ONLY				DESIGN ACTIVITY GROUP BOARD LEVEL				
				THIRD ANGLE PROJECTION				
				DATE 22-SEP-15				
				SIZE C				
				CAGE CODE 77820				
				DOCUMENT NO. RVPX-J08EXX				
				REV. A				
				SCALE: 5.0				
				REF. NONE				
				SHEET 1 OF 2				

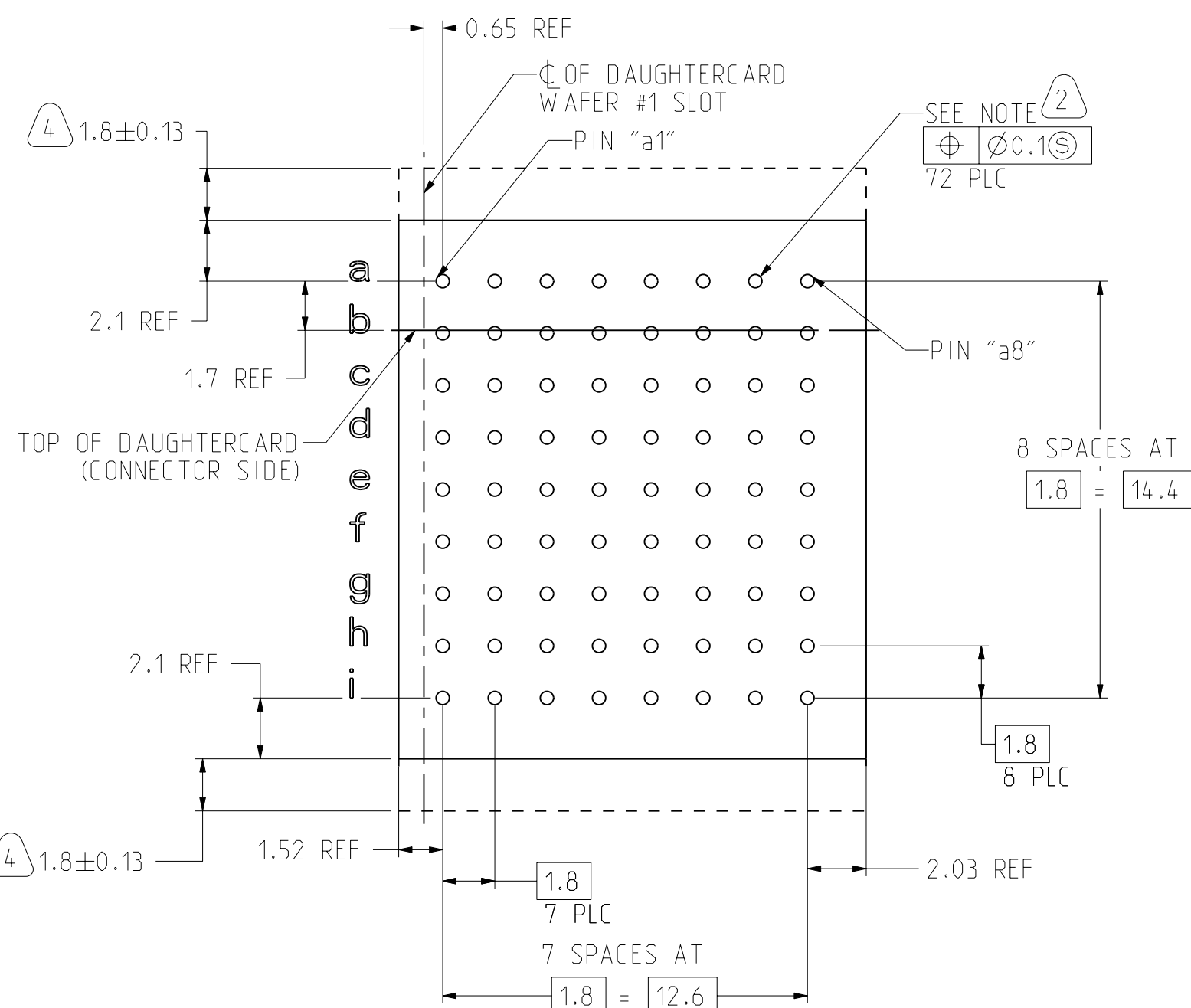
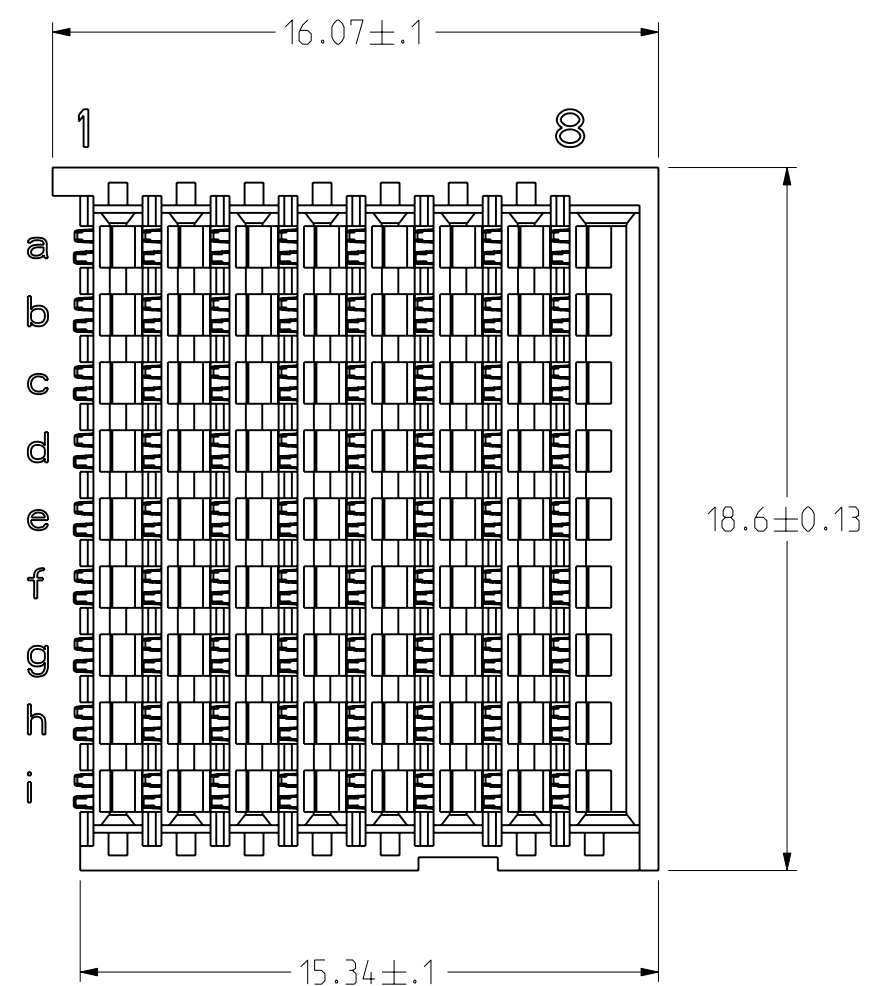
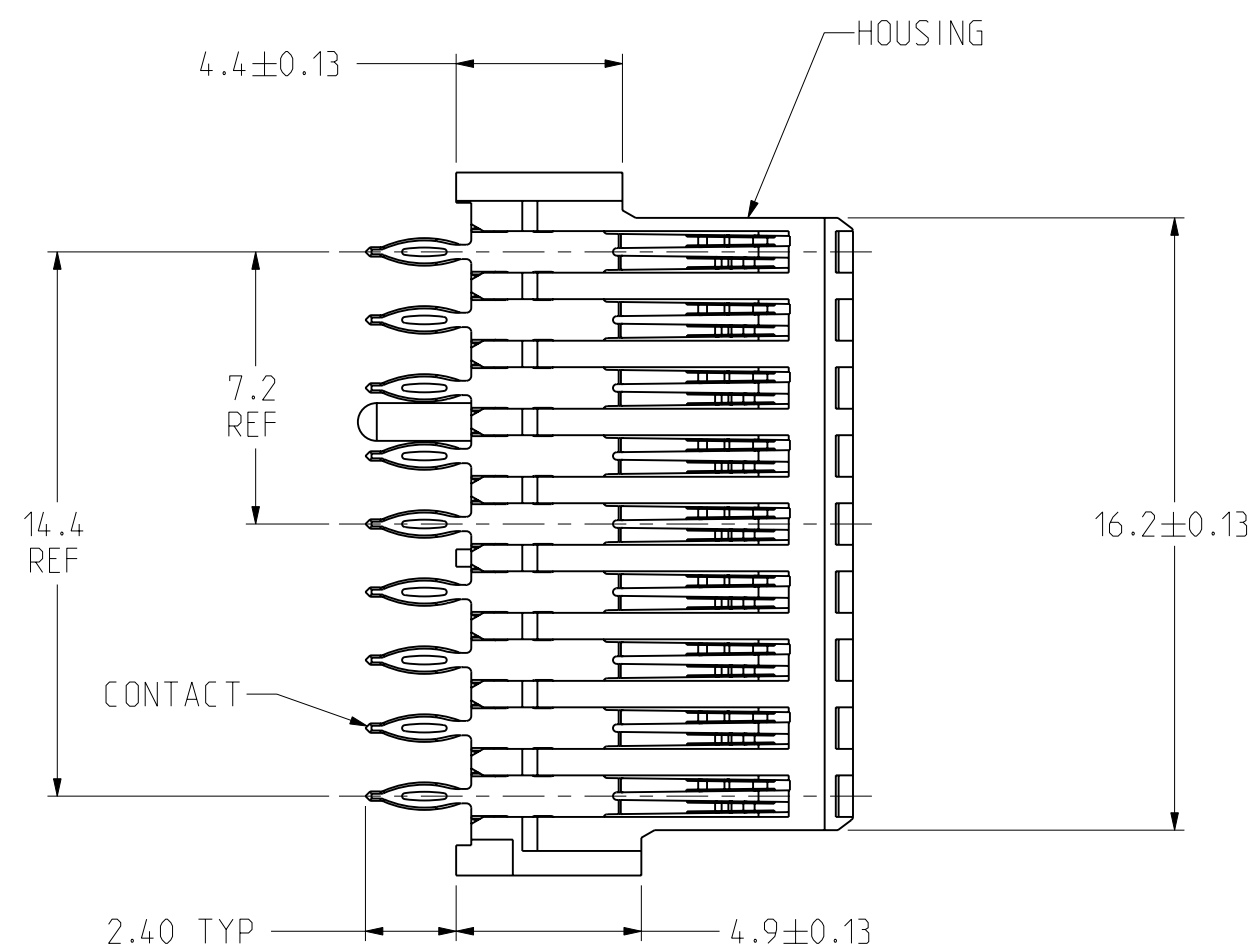
THE USE OF THIS DOCUMENT IS UNLIMITED. HOWEVER, DOCUMENTS REFERENCED HEREON MAY CONTAIN LIMITED RIGHTS DATA.

DOCUMENT NO. RVPX-J08EXX	SHEET 1 OF 2	REV. A
--------------------------	--------------	--------

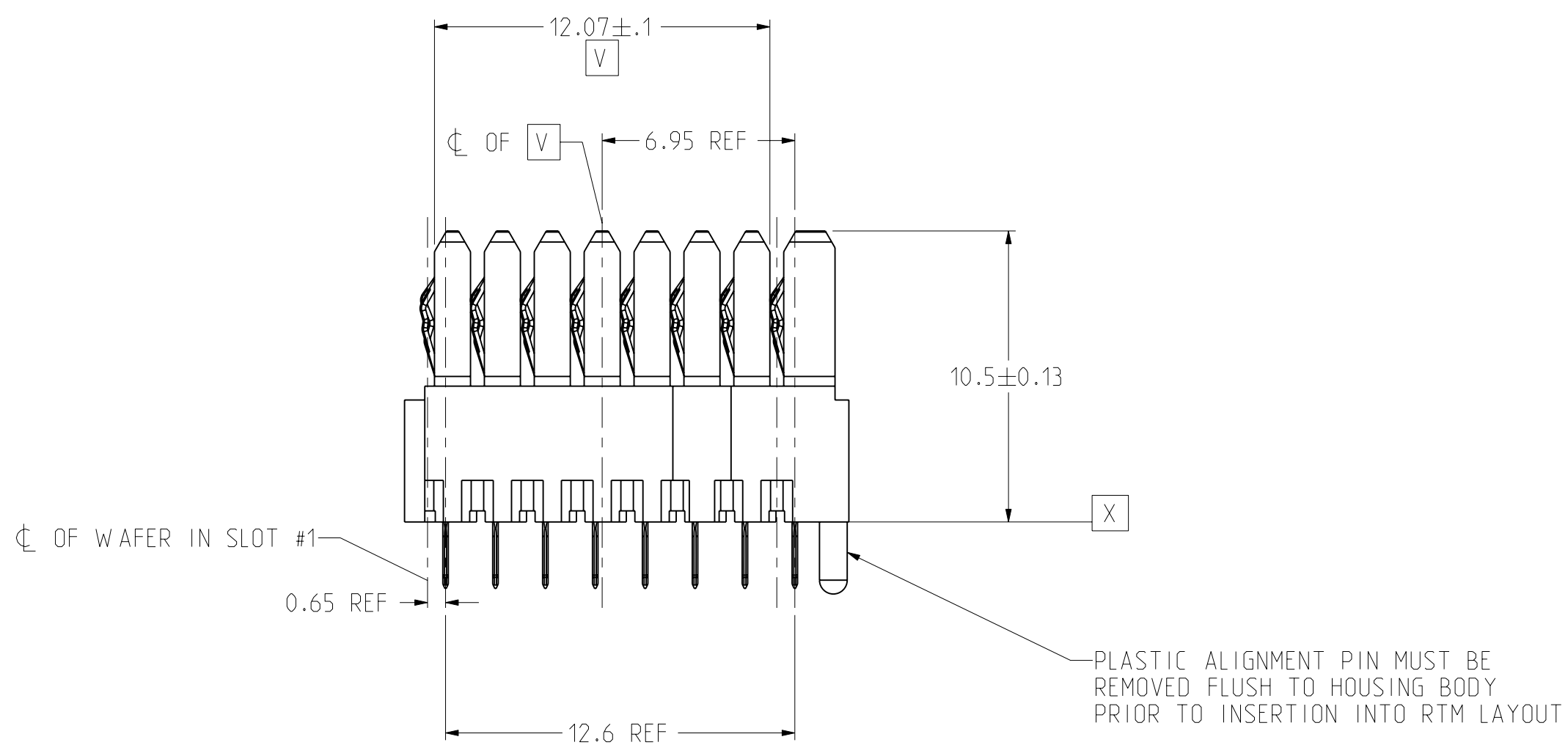
PRO/ENGINEER INFORMATION  
 Pro/e Model Used:  
 RVPX-J08EXX.ASSEM  
 Drawing Name:  
 RVPX-J08EXX

NEXT ASSEMBLY

# REAR TRANSITION MODULE APPLICATION



RTM PC BOARD LAYOUT  
(CONNECTOR SIDE)  
SCALE 5/1



NOTES:

THE USE OF THIS DOCUMENT IS UNLIMITED. HOWEVER, DOCUMENTS REFERENCED HEREON MAY CONTAIN LIMITED RIGHTS DATA.

SIZE <b>C</b>	CAGE CODE <b>77820</b>	DOCUMENT NO. <b>RVPX-J08EXX</b>	REV. <b>A</b>
SCALE: 5.0		REF: NONE	SHEET 2 OF 2

DOCUMENT NO. RVPX-J08EXX  
SHEET 2 OF 2  
REV. A  
VERSION 5  
Eng. PDM Information For Reference Only