



Wi-Fi SINGLE BAND ON BOARD ANTENNA

Part Numbers: 2108790-1, 2108790-2

FEATURES & BENEFITS

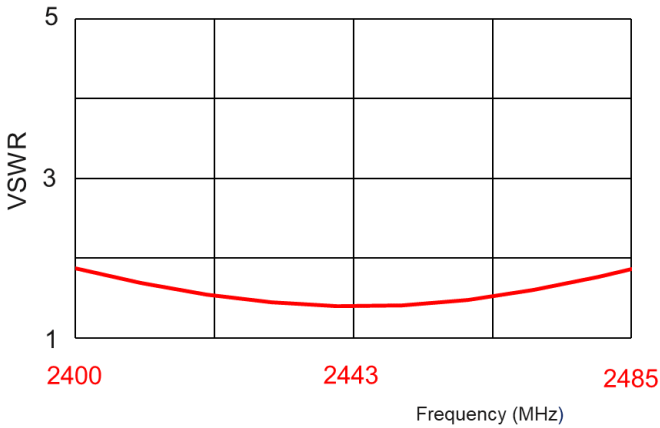
- IEEE802.11 b/g, Bluetooth, ZigBee
- Global Frequency coverage
- On board SMD mount PCB antenna
- Minimal keep out zone requirement
- Performance dependent on ground plane size and design

SPECIFICATIONS

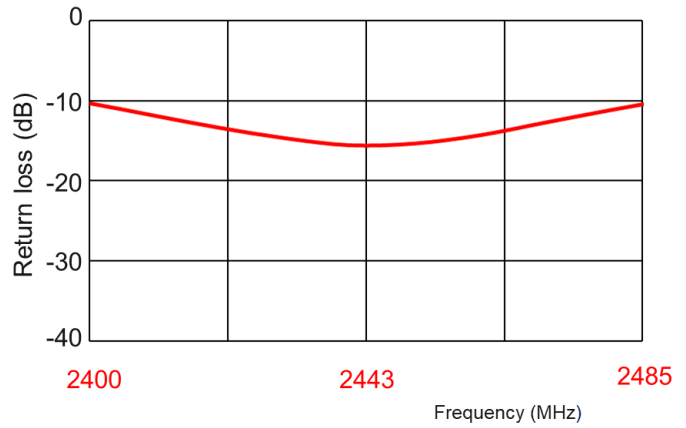
Frequency Range (MHz)	2400-2483.5
VSWR	< 2.0:1
Average Efficiency	60%
Peak Gain	0.4dBi
Average Gain	-2.3dBi
Power Handling	10 Watt cw
Feed Point Impedance	50 ohms unbalanced
Polarization	Linear
Size	18.9 mm x 6.2 mm x 0.76 mm
Weight	< 0.2 g
Mounting	Surface mount
Operating Temperature	-40 to +85°C
Storage Temperature	-40 to +85°C
Packaging Specification	Bag & Box / Tape & Reel
Hazardous Materials	A certificate of conformance is available from the product page on TE website.
Data measured in free space and on reference ground plane of 29 mm length and 37 mm width, application data might vary	

RF DATA

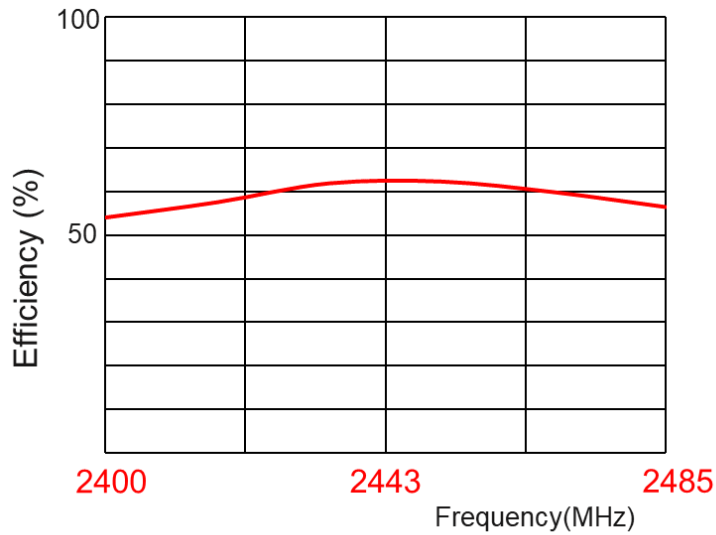
VSWR



Return Loss



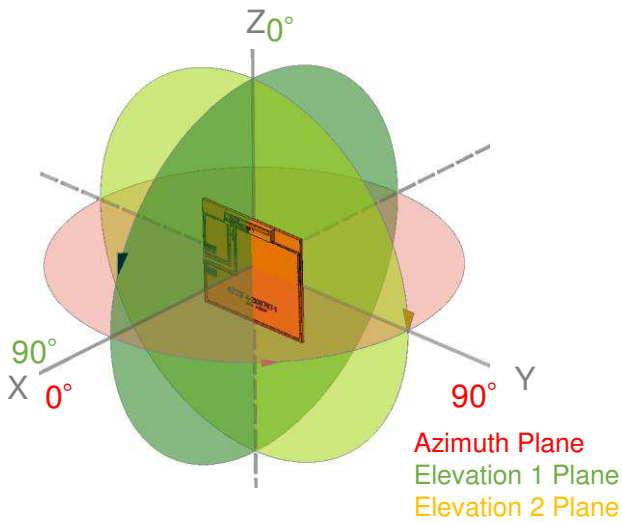
Efficiency



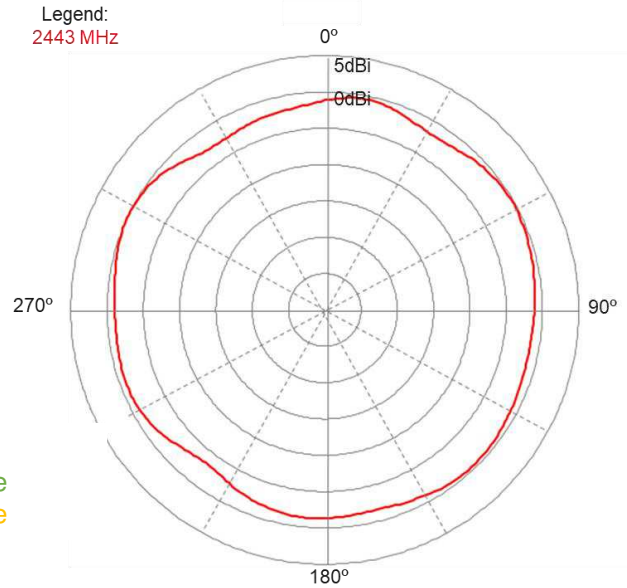
Data measured in free space and on reference ground plane of 29 mm length and 37 mm width, application data might vary

RADIATION PATTERN

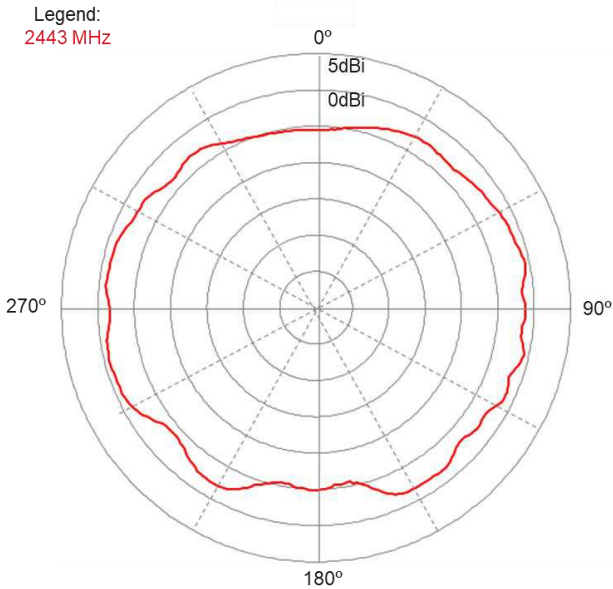
Test setup



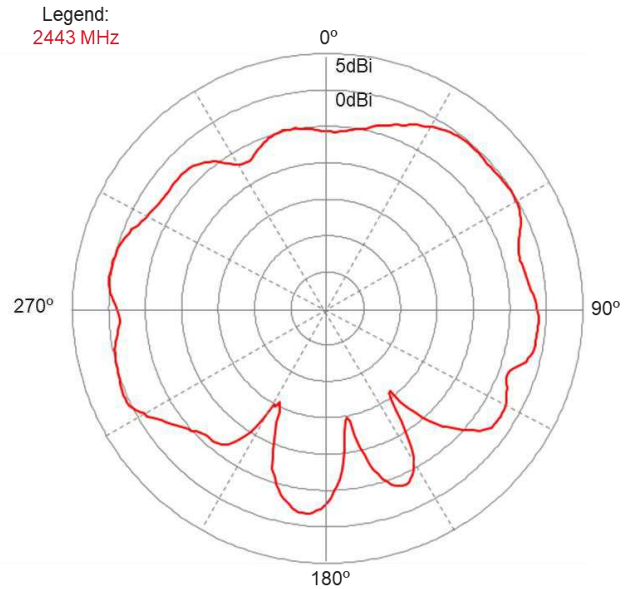
Azimuth



Elevation 1

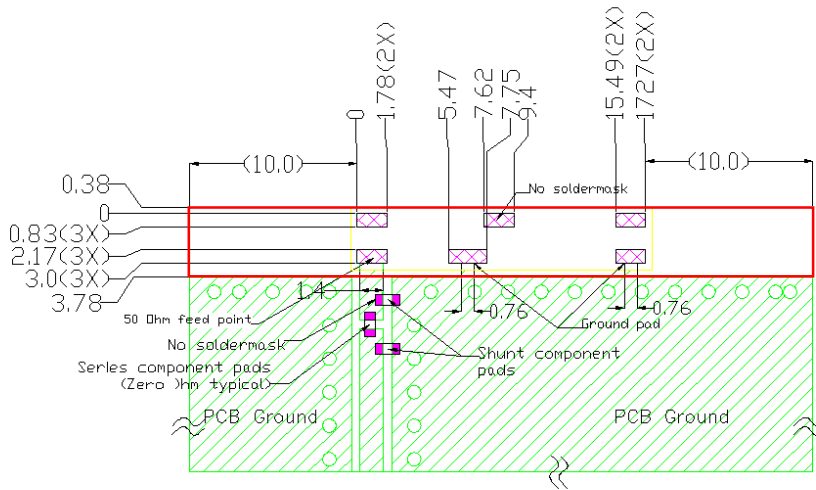


Elevation 2



Data measured in free space and on reference ground plane of 29 mm length and 37 mm width, application data might vary

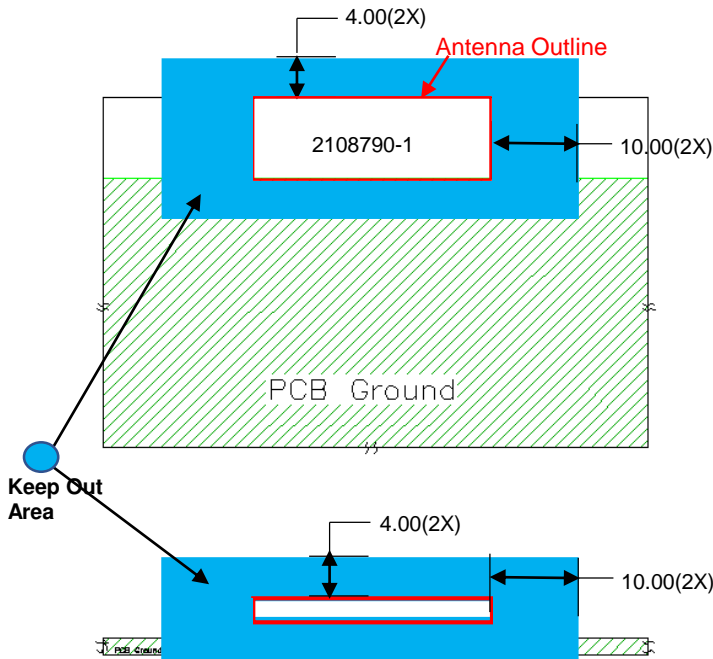
MOUNTING GUIDE



Dimension: mm
Diagrams is not into scale

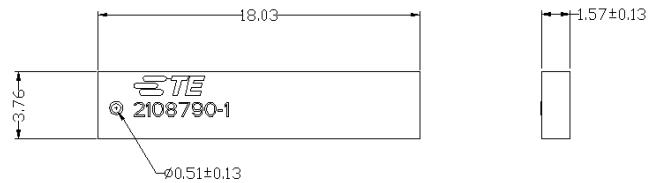
- NOTES: 1. Suggested matching component pads.
 2. Antenna must be mounted on the edge of PCB.
 3. NC = No connection (mechanical mounting pads).
 4. No copper allowed in designated area on all PCB layers –
 5. For more information please call TE.

KEEP OUT AREA



Dimension: mm
Diagrams is not into scale

DIMENSIONS



Dimension: mm
Diagrams is not into scale